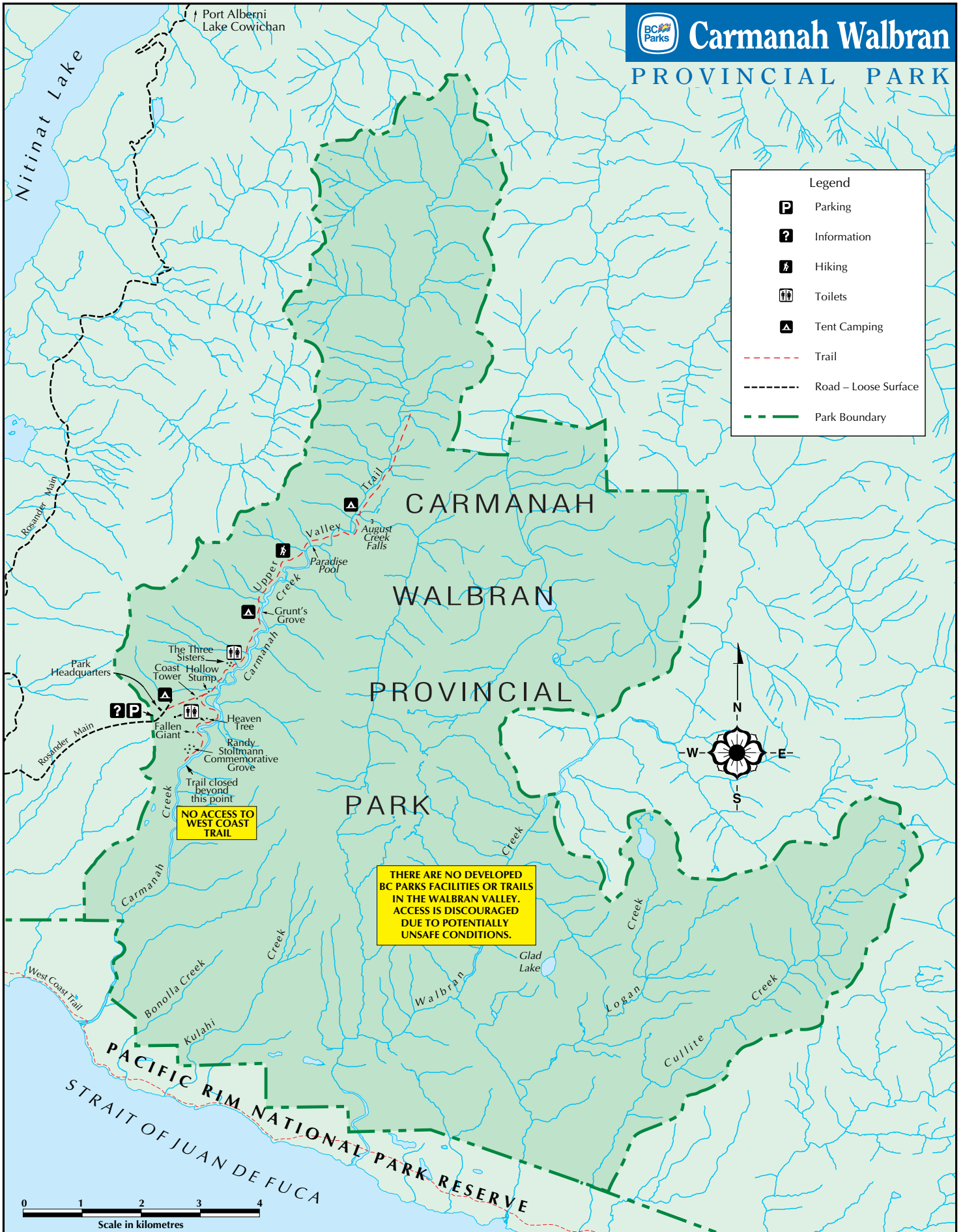




Carmanah Walbran PROVINCIAL PARK

Legend	
	Parking
	Information
	Hiking
	Toilets
	Tent Camping
	Trail
	Road – Loose Surface
	Park Boundary



NO ACCESS TO WEST COAST TRAIL

THERE ARE NO DEVELOPED BC PARKS FACILITIES OR TRAILS IN THE WALBRAN VALLEY. ACCESS IS DISCOURAGED DUE TO POTENTIALLY UNSAFE CONDITIONS.

