

Message to Visitors

Just 30 minutes from Victoria, Goldstream Provincial Park is far removed from the urban adventures of British Columbia's capital city.

The **Freeman King Visitor Centre** offers innovative interpretive displays and programs year round. Campers enjoy wooded campsites a short walk from Goldstream River. Hikers and strollers seek inspiration in this magnificent example of coastal BC's great outdoors.

From the trails through the lowland areas of the park you will see 600-year-old Douglas-fir and western redcedar trees. Garry oak and arbutus trees grow on the dry upland slopes.

Wildlife viewing is a highlight of the park. There are views over the teeming life of the river estuary and salt marsh at the mouth of the Goldstream River from the platform near the Visitor Centre. See migrating humming birds in March, followed later in spring and early summer by nesting ducks and shorebirds. In fall thousands of chum salmon return to the river to spawn, and in early winter scores of bald eagles gather to feed on the abundant food supply resources of the estuary. Early morning visitors frequently spot deer from the viewing platform.

This is bear and cougar territory. Please exercise caution. Keep children close to you and pets on a leash and under control at all times.

Never approach or feed bears or other animals. Store and dispose of your food and refuse so wildlife cannot get it. Use facilities provided.

Familiarize yourself with additional bear and cougar information that may be posted on park information shelters. If you see bears or cougars, please report sightings to the Park Facility Operator, or call the Observe, Record, Report line at 1-800-663-9453.

How to Get to the Park

Access to the campground is via Sooke Lake Road from Hwy 1 at the southern boundary of the park. The entrance to the day-use area parking and Freeman King Visitor Centre trail is near the junction of Hwy 1 and Finlayson Arm Road.

Provincial Parks Nearby

Other provincial parks nearby are Bamberton Provincial Park, McDonald Provincial Park and French Beach Provincial Park.

For More Information

BC Parks

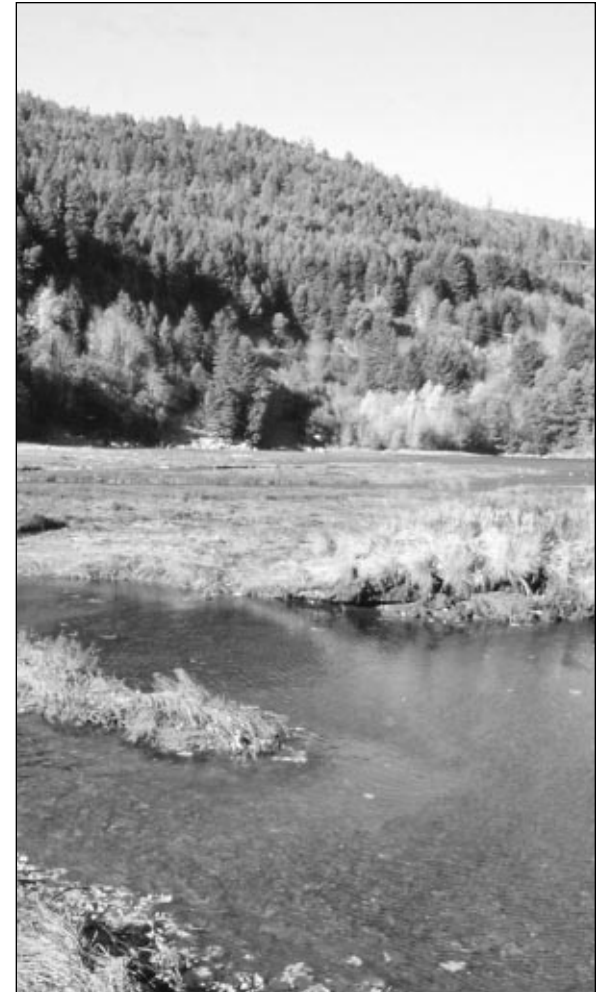
<http://wlapwww.gov.bc.ca/bcparks>



Ministry of Water, Land
and Air Protection



P R O V I N C I A L P A R K



Welcome. This 388-hectare park 16 kilometres from Victoria has a Visitor Centre, big trees, wildlife viewing, water falls, scenic hikes, and wooded campground.

Vancouver Island

History

The area of the park was given to the people of British Columbia by the Greater Victoria Water Board in 1958. Additional lands were added to the park in 1994 through the Commonwealth Nature Legacy Program.

Conservation

The flora and fauna diversity within the area makes Goldstream Provincial Park a marvel of nature. With two distinct vegetation zones, the park offers views of 600-year-old Douglas-fir and western redcedar as well the arbutus tree, found exclusively on Vancouver Island and the southwest coast of British Columbia. The Goldstream River, site of an annual chum salmon spawning run, also adds to the park's natural values.

Flowers, trees and shrubs are part of the park's natural heritage, please do not damage or remove them.

From late October through December, the Goldstream River is the scene of one of nature's spectacles as chum, coho and chinook salmon enter the river via Finlayson Arm from the Pacific Ocean. Three to four years previously, these same salmon were born here before travelling to the sea to grow and mature. Their return to spawn and die in their ancestral spawning beds is fascinating and the Visitor Centre features special programs to help visitors appreciate this miraculous event. The Goldstream River estuary is closed to the public (including all boaters). This closure has resulted in a resurgence of wildlife using the estuary throughout the year. Once rarely-seen bald eagles now abound during the salmon run and nest during the summer.

Cultural Heritage

Goldstream is located on traditional fishing grounds of local First Nations. Old mining shafts and tunnels are all that remains of the gold rush to the Goldstream River during the mid-19th century.

Freeman King Visitor Centre

Walk to the Centre from the day-use parking lot. The Centre has interpretive programs and displays that feature the park's natural and human history, including the spectacular chum salmon run from late October to early December and the "Eagle Extravaganza", December to February. The Centre is open year round. Call (250) 478-9414 for details on hours and programs. Access for disabled visitors can be arranged by telephoning the Visitor Centre.

What You Should Know



There are 173 campsites at this park. Campsite reservations are accepted. First-come, first-served sites are also available. For campsite reservations call 1-800-689-9025 or (604) 689-9025 or www.discovercamping.ca.



There are group campsites available. These sites can also be used for group picnics. For more information refer to the BC Parks website or call (250) 474-1336.



There is a large day-use/picnicking area with a shelter, picnic tables and a parking area.



Some facilities and hiking trails in the park are wheelchair accessible. At the campground, there is a disabled access washroom and campsite.



Cold water taps are located throughout the park. Taps are shut off during the off season.



Pit and flush toilets available.



There are hot water shower facilities at the campground.



Sani-station/dump is available at the campground from March 15 to October 31 and costs \$2 to discharge.



Firewood may be available for purchase. Campfire pits are provided. Group campfire facilities and/or limited burning hours may be designated at some campgrounds. Fire bans may be implemented during extremely hot weather conditions. Be prepared to bring a portable stove for cooking.



There are various trails throughout the park totalling approximately 16 kilometres. Some of these trails are: **Arbutus Loop** – passes through an interesting stand of arbutus trees (15 minutes); **Arbutus Ridge** – through the drier upland with colourful flowers along the way from April to June (1 1/2 hours one way); **Gold Mine** – crosses the Niagara Creek near the brink of 47.5-metre Niagara Falls (1 hour one way); **Lower Goldstream** – look for mink and river otter, spawning salmon in autumn and salmon fry in summer (15 minutes one way); **Upper Goldstream** – parallels the Goldstream River and passes by some of the oldest and largest trees in the park (1/2 hour one way); **Prospector's** – along the trail are giant Douglas-fir, oak and arbutus trees (1 1/2 hours one way). There are also short 5–15 minute walks along the river bank and through big trees.

Mount Finalyson is a strenuous hike to one of the highest points in Greater Victoria. Allow a minimum of 1 hour to reach the summit. Trail caution: the trail is very steep and rugged. Dress for the terrain and weather, stay on marked trails, allow adequate time for return in daylight, and take the same trail up and down.

For your on safety and the preservation of the park, hike only on marked trails and obey posted signs. The ecosystems of this park are rare and fragile. Shortcutting trails destroys plant life and soil structure.



There is river swimming near the gatehouse at the campground. There are no lifeguards on duty at provincial parks.



River fishing is allowed in this provincial park. Check notice board for updates. All anglers must have a valid fishing license; refer to current *BC Environment Fishing Regulations Synopsis*.



Bicycles must keep to roadways.



Pets/domestic animals must be on a leash and under control at all times. You are responsible for their behavior and must dispose of their excrement.

Note that backcountry areas are usually not suitable for dogs due to wildlife issues and the potential for problems with bears.

Help prevent disruption of salmon spawning by keeping pets out of the water.

Park Fees

Open all year. Fees are collected for services from March 15 to October 31. There is a winter fee (with no services provided) from November 1 to March 14. Campers must be self-sufficient. If required, refer to the BC Parks website to confirm dates, as they may be subject to change.

Check-in: for reservation holders is 1 p.m. to 10 p.m.; for non-reservation holders is 7 a.m. to 10 p.m. **Check-out:** is 11 a.m. **Gates open** at 7 a.m. and **close** at 11 p.m.

There is a gatehouse at Goldstream Provincial Park which is open from the long weekend in May to the Labour Day weekend in September.