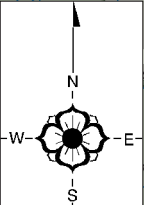
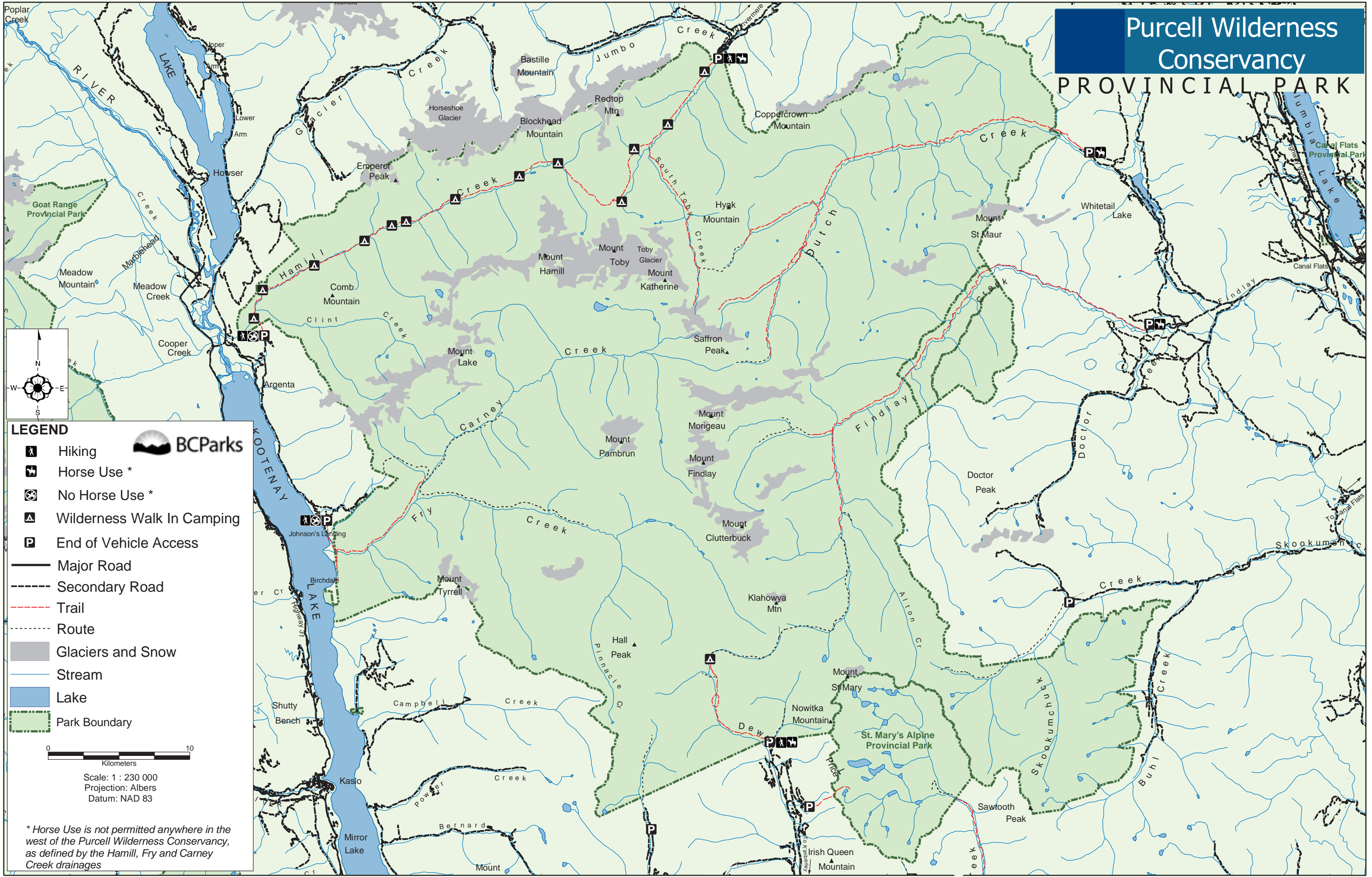


Purcell Wilderness Conservancy

PROVINCIAL PARK



LEGEND

- Hiking
- Horse Use *
- No Horse Use *
- Wilderness Walk In Camping
- End of Vehicle Access
- Major Road
- Secondary Road
- Trail
- Route
- Glaciers and Snow
- Stream
- Lake
- Park Boundary



Scale: 1 : 230 000
 Projection: Albers
 Datum: NAD 83

* Horse Use is not permitted anywhere in the west of the Purcell Wilderness Conservancy, as defined by the Hamill, Fry and Carney Creek drainages