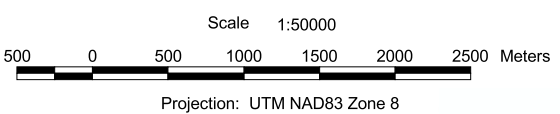


375000 380000

**TATSHENSHINI - ELSEK PARK
Campsite Locations (Yukon)
Tatshenshini River
Map 2 of 12**

LEGEND

- Campsite Locations**
(Rated for possibility of grizzly bear - human interaction)
- ▲ High Risk
 - ▲ Moderate Risk
 - ▲ Low Risk
- | | |
|--|---|
| <ul style="list-style-type: none"> ⋯ Rapids ⋯ Dry river bed or sand ⋯ Wetlands □ Waterbodies — Rivers — Contours (ft) ■ Permanent ice and snow ■ Moraine ■ Forested Areas | <ul style="list-style-type: none"> — Highway — Main road — Secondary road — Other ⋯ Trail ⋯ Cutline ⋯ Railway — Pipeline ⋯ Transmission line |
|--|---|



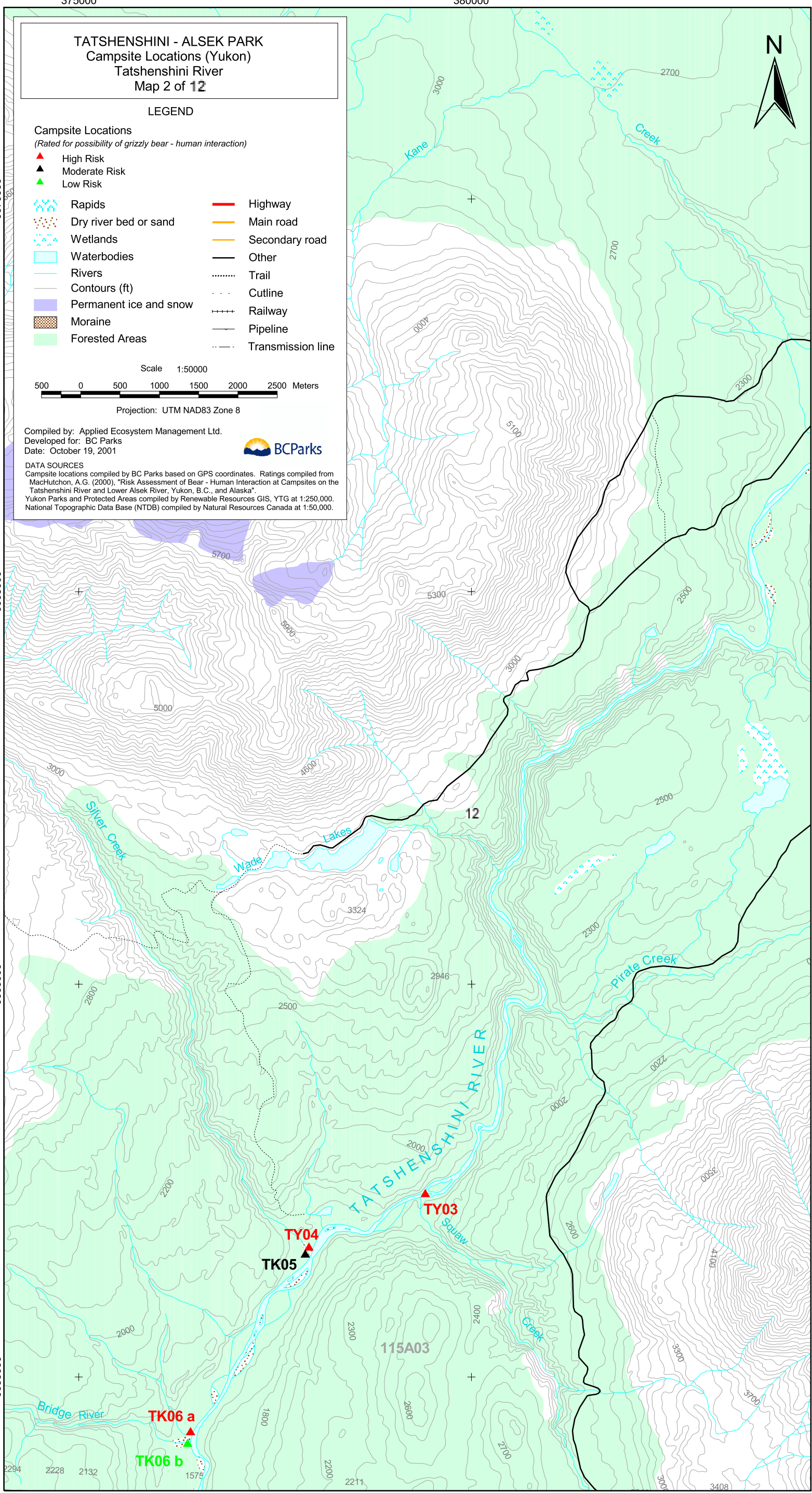
Compiled by: Applied Ecosystem Management Ltd.
Developed for: BC Parks
Date: October 19, 2001

DATA SOURCES
Campsite locations compiled by BC Parks based on GPS coordinates. Ratings compiled from MachHutchon, A.G. (2000), "Risk Assessment of Bear - Human Interaction at Campsites on the Tatshenshini River and Lower Alsek River, Yukon, B.C., and Alaska".
Yukon Parks and Protected Areas compiled by Renewable Resources GIS, YTG at 1:250,000.
National Topographic Data Base (NTDB) compiled by Natural Resources Canada at 1:50,000.



6670000
6665000
6660000
6655000

6670000
6665000
6660000
6655000



375000 380000