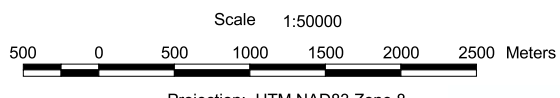


**TATSHENSHINI - ALSEK PARK**  
**Campsite Locations (British Columbia)**  
**Tatshenshini River**  
**Map 4 of 12**

**LEGEND**

- Campsite Locations**  
*(Rated for possibility of grizzly bear - human interaction)*
- ▲ High Risk
  - ▲ Moderate Risk
  - ▲ Low Risk
- |                         |                     |
|-------------------------|---------------------|
| --- Rapids              | — Highway           |
| — River, Stream         | — Main Road         |
| — Island - Definite     | — Secondary Road    |
| — Waterbodies           | - - - Airstrip      |
| - - - Sand Bar          | — Bridge            |
| - - - Wetlands          | — Pipeline          |
| - - - Glacier, Icefield | — Transmission Line |
| — Contours (100 m.)     |                     |



Compiled by: Applied Ecosystem Management Ltd.  
 Developed for: BC Parks  
 Date: October 19, 2001

**DATA SOURCES**  
 Campsite locations compiled by BC Parks based on GPS coordinates. Ratings compiled from MacHutchon, A.G. (2000), "Risk Assessment of Bear - Human Interaction at Campsites on the Tatshenshini River and Lower Alsek River, Yukon, B.C., and Alaska".  
 BC Parks and Protected Areas compiled by BC Parks at 1:250,000.  
 TRIM Base Features compiled by BC Parks at 1:20,000.