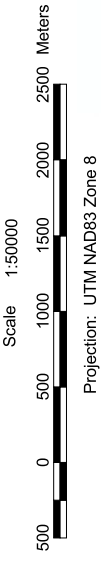


TATSHENSHINI - ALSEK PARK
Campsite Locations (British Columbia)
Tatshenshini River
Map 7 of 12

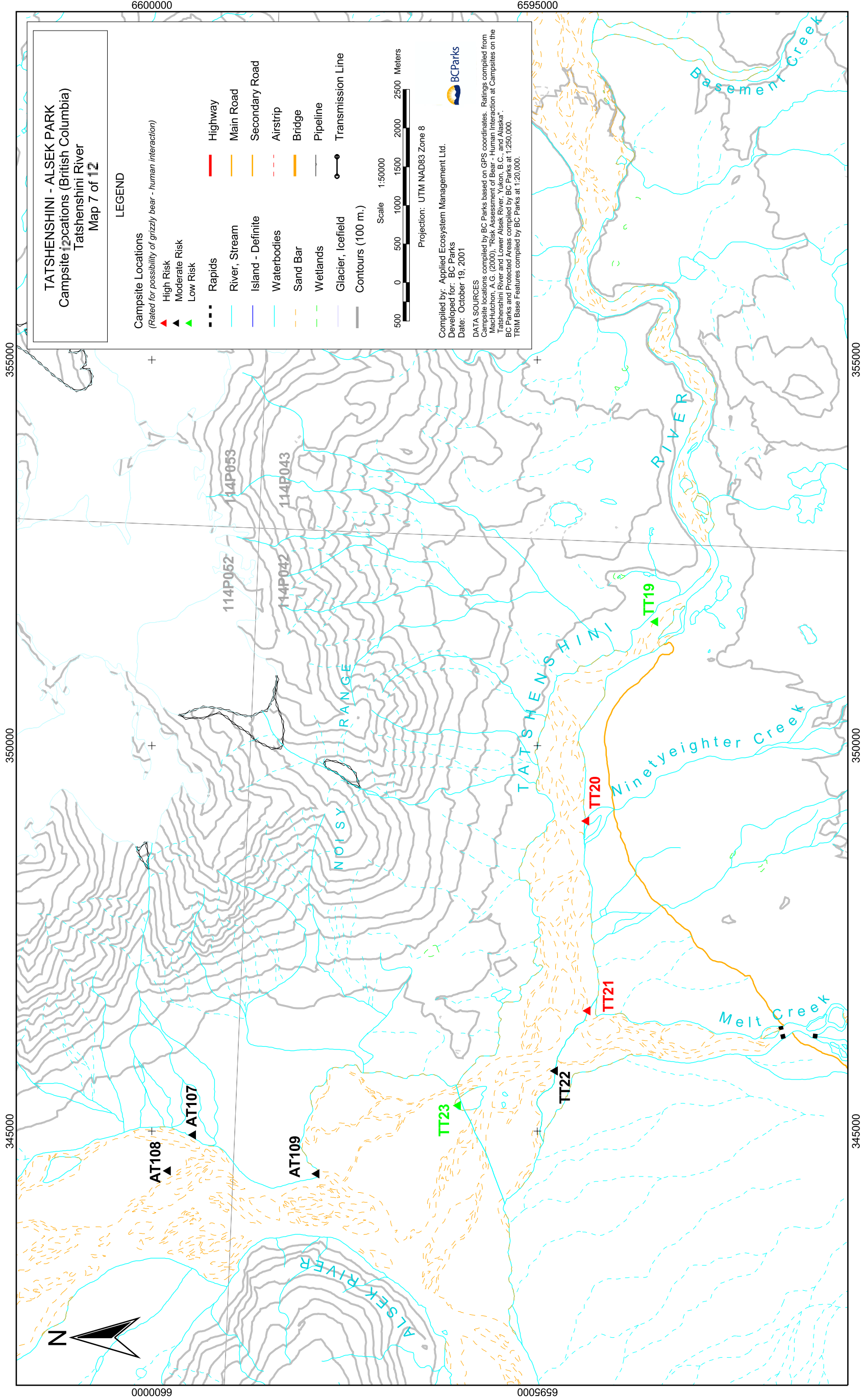
- LEGEND**
- Campsite Locations**
(Rated for possibility of grizzly bear - human interaction)
- ▲ High Risk
 - ▲ Moderate Risk
 - ▲ Low Risk
- Rapids
 - River, Stream
 - Island - Definite
 - Waterbodies
 - Sand Bar
 - Wetlands
 - Glacier, Icefield
 - Contours (100 m.)
- Highway
 - Main Road
 - Secondary Road
 - Airstrip
 - Bridge
 - Pipeline
 - Transmission Line



BCParks

Compiled by: Applied Ecosystem Management Ltd.
 Developed for: BC Parks
 Date: October 19, 2001

DATA SOURCES
 Campsite locations compiled by BC Parks based on GPS coordinates. Ratings compiled from Wechtuchon, A.G. (2000). Risk Assessment of Bear - Human Interaction at Campsites on the Tatshenshini River and Lower Alsek River, Yukon, B.C., and Alaska. BC Parks and Protected Areas compiled by BC Parks at 1:250,000. TRIM Base Features compiled by BC Parks at 1:20,000.



355000

350000

345000

0000099

6595000

6600000

6595000

355000

350000

345000