

330000

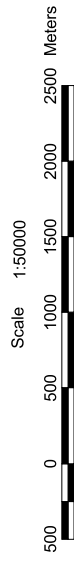
335000

340000

**TATSHENSHINI - ELSEK PARK**  
**Campsite Locations (British Columbia)**  
**Elsek River**  
**Map 8 of 12**

**LEGEND**

- Campsite Locations**  
*(Rated for possibility of grizzly bear - human interaction)*
- ▲ High Risk
  - ▲ Moderate Risk
  - ▲ Low Risk
- Rapids
  - River, Stream
  - Island - Definite
  - Waterbodies
  - Sand Bar
  - Wetlands
  - Glacier, Icefield
  - Contours (100 m.)
  - Highway
  - Main Road
  - Secondary Road
  - Airstrip
  - Bridge
  - Pipeline
  - Transmission Line



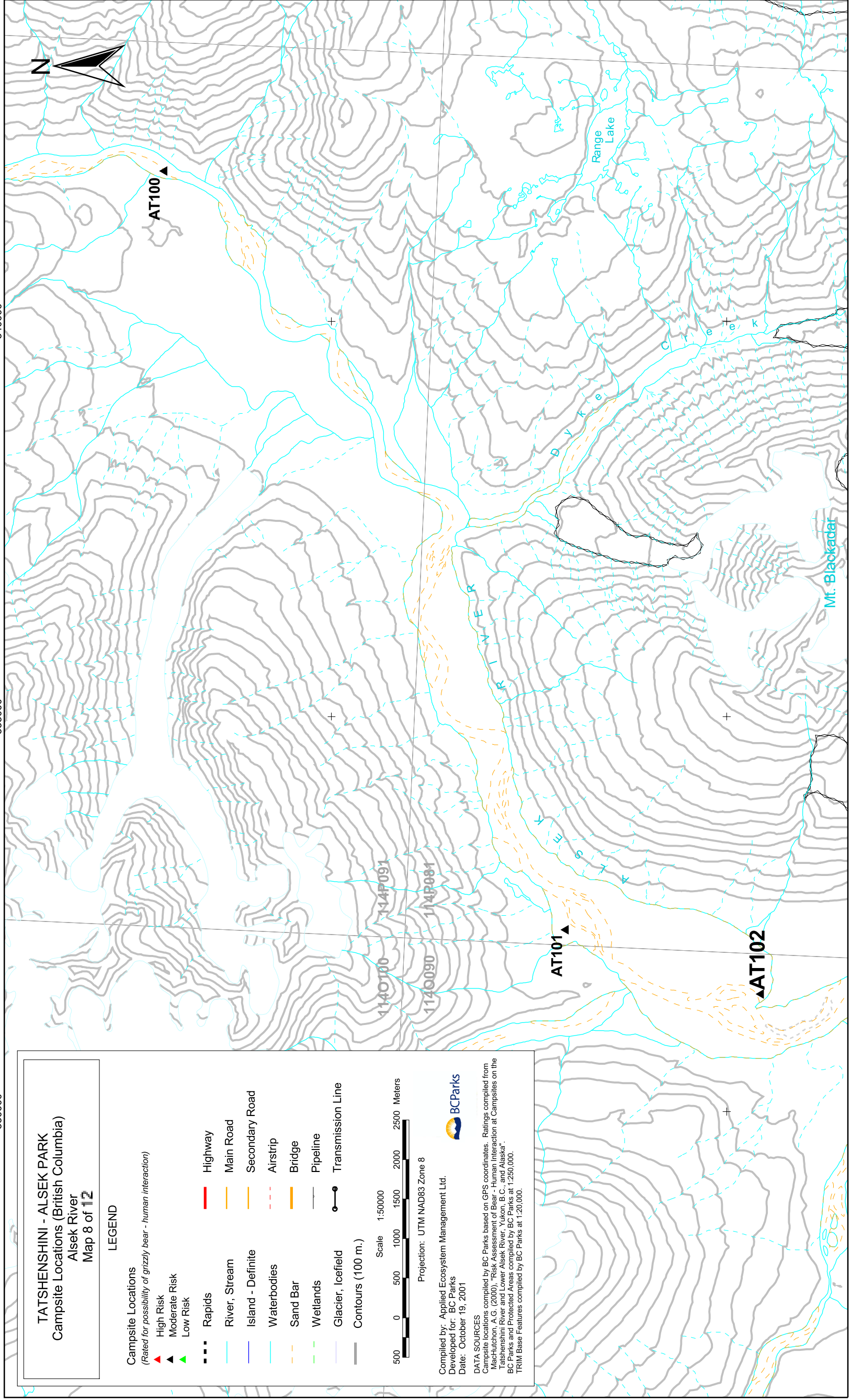
Compiled by: Applied Ecosystem Management Ltd.  
 Developed for: BC Parks  
 Date: October 19, 2001

**BC Parks**

DATA SOURCES  
 Campsite locations compiled by BC Parks based on GPS coordinates. Ratings compiled from Machulchuk, A.G. (2000). "Risk Assessment of Bear - Human Interaction at Campsites on the Tathshenshini River and Lower Elsek River, Yukon, B.C., and Alaska".  
 BC Parks and Protected Areas compiled by BC Parks at 1:250,000.  
 TRIM Base Features compiled by BC Parks at 1:20,000.

6645000

6640000



330000

335000

340000