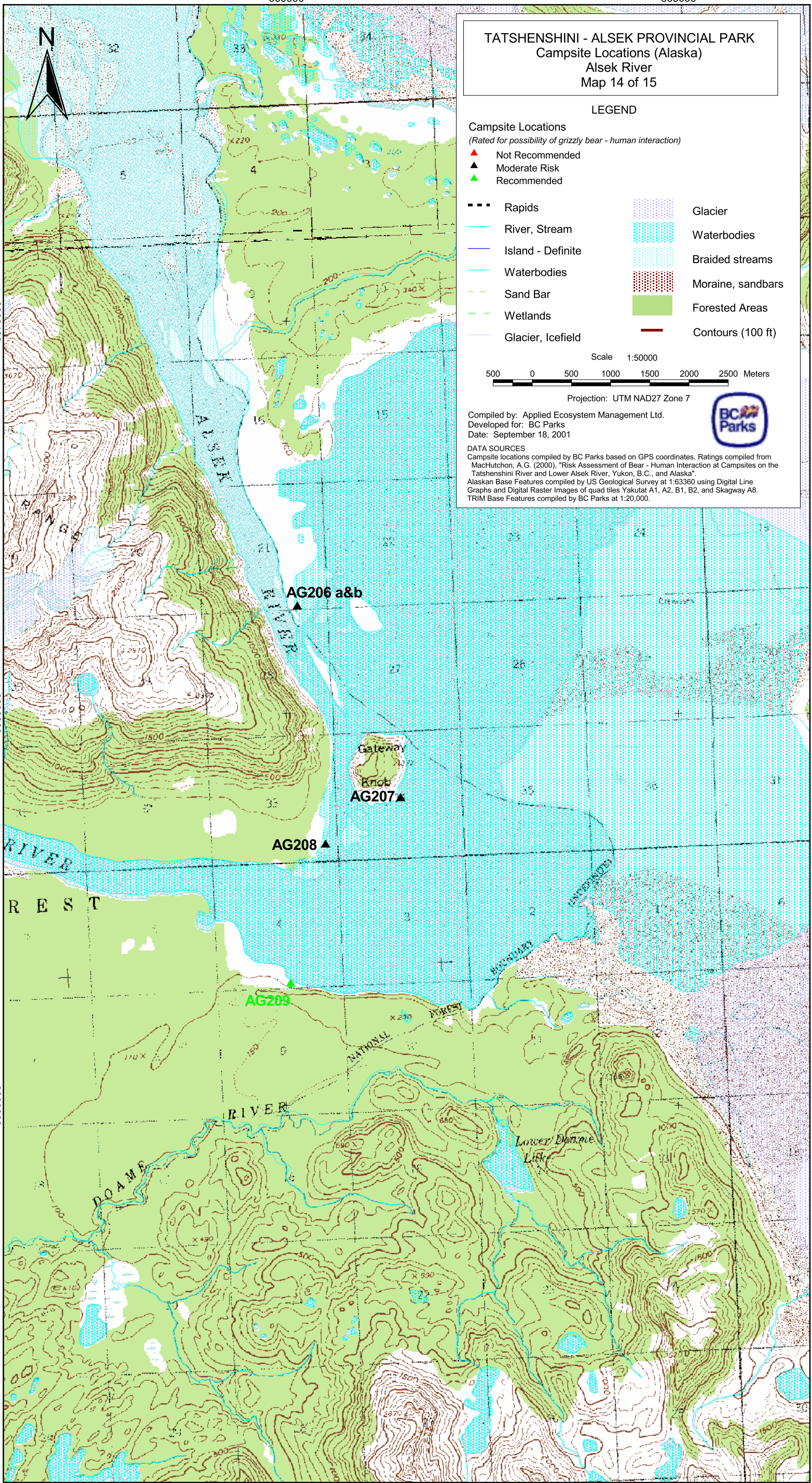


660000

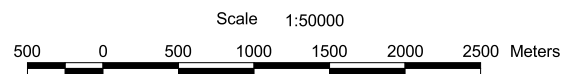
665000



TATSHENSHINI - ALSEK PROVINCIAL PARK
Campsite Locations (Alaska)
Alsek River
Map 14 of 15

LEGEND

- Campsite Locations**
(Rated for possibility of grizzly bear - human interaction)
- ▲ Not Recommended
 - ▲ Moderate Risk
 - ▲ Recommended
- Rapids
 - River, Stream
 - Island - Definite
 - Waterbodies
 - Sand Bar
 - Wetlands
 - Glacier, Icefield
 - Glacier
 - Waterbodies
 - Braided streams
 - Moraine, sandbars
 - Forested Areas
 - Contours (100 ft)



Projection: UTM NAD27 Zone 7

Compiled by: Applied Ecosystem Management Ltd.
 Developed for: BC Parks
 Date: September 18, 2001



DATA SOURCES
 Campsite locations compiled by BC Parks based on GPS coordinates. Ratings compiled from MacHutchon, A.G. (2000), "Risk Assessment of Bear - Human Interaction at Campsites on the Tathshenshini River and Lower Alsek River, Yukon, B.C., and Alaska".
 Alaskan Base Features compiled by US Geological Survey at 1:63360 using Digital Line Graphs and Digital Raster Images of quad tiles Yakutat A1, A2, B1, B2, and Skagway A8.
 TRIM Base Features compiled by BC Parks at 1:20,000.

6570000

6565000

6560000

6570000

6565000

6560000

660000

665000