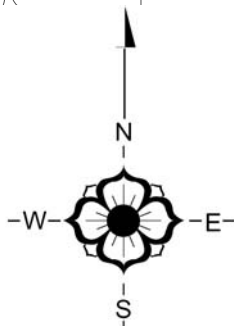
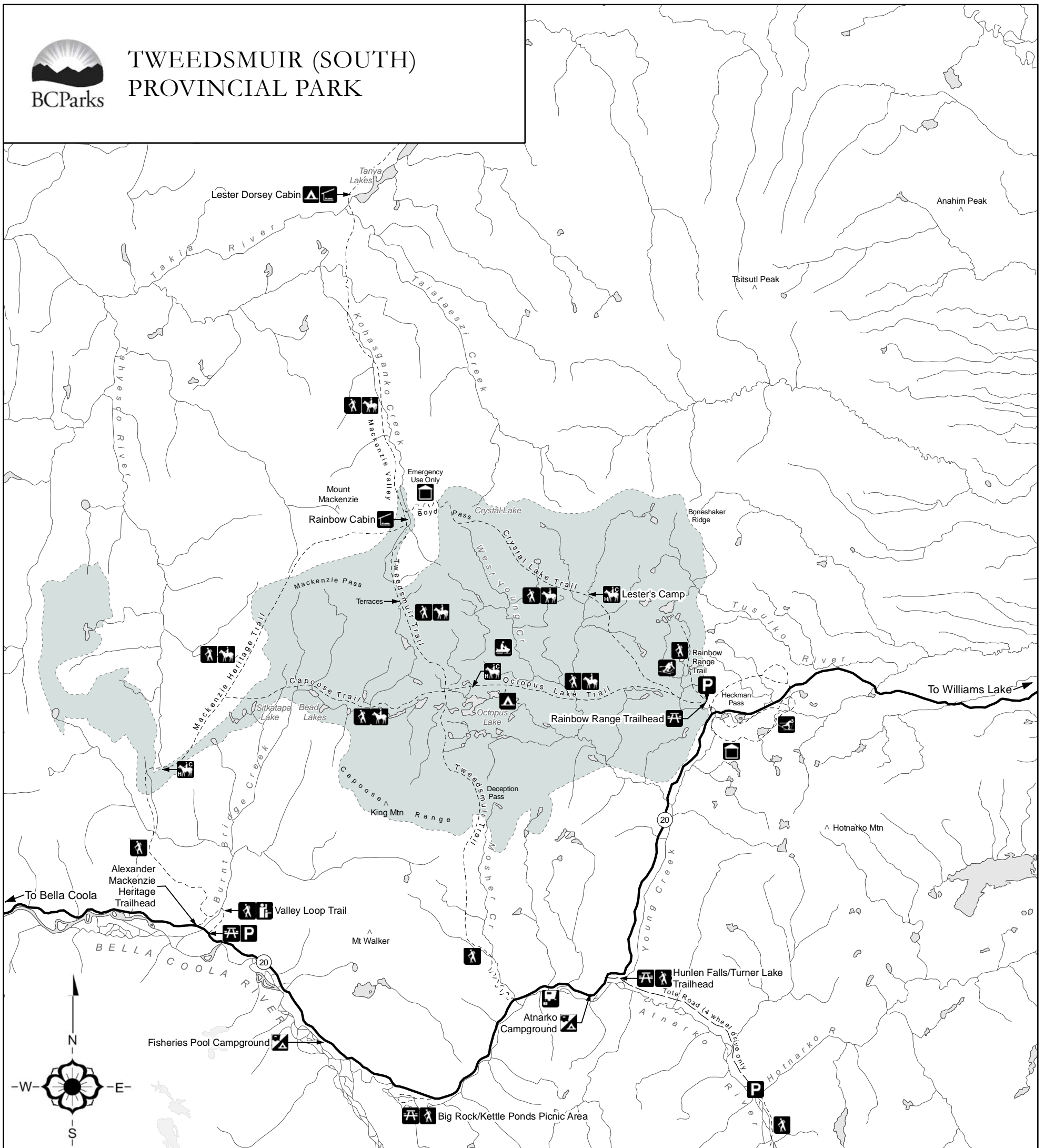


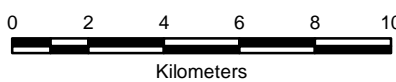


TWEEDSMUIR (SOUTH) PROVINCIAL PARK



Legend

- Park Boundary
- Highway
- Road, paved
- Trail
- Glacier
- Rainbow Range Snowmobile Area
- Snowmobile
- Downhill Skiing
- Cross-country Skiing
- Parking
- Day-use Area
- Vehicle/Tent Camping
- Wilderness Camping
- Horse Trail
- Horse Camp
- Cabin
- Shelter
- Hiking Trail
- Canoeing
- Portage
- Point of Interest
- Sani-station



Snowmobiling in South Tweedsmuir Park

- Snowmobiling is permitted only within the area shown on the map, in order to protect wildlife habitat. This area is regularly patrolled by BC Parks staff.
- Use the designated snowmobile trail to access the overnight cabin, ski hill and snowmobile area.
- Carry out all of your garbage.
- Stay clear of ski Trails.