

**PURPOSE  
STATEMENT  
AND ZONING PLAN**

February 2007

for Eneas Lakes  
Provincial Park



Ministry of Environment,  
Environmental Stewardship  
Division

Eneas Lakes  
Provincial Park

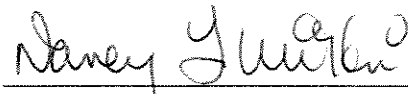
Purpose Statement and  
Zoning Plan

Approved by:



Date: Feb. 15, 2007

Drew Carmichael  
Regional Manager  
Environmental Stewardship Division



Date: March 8, 2007

Nancy Wilkin  
Assistant Deputy Minister  
Environmental Stewardship Division

# Eneas Lakes Provincial Park

## Purpose Statement and Zoning Plan

### Background Summary

Eneas Lakes Park, located 25 km northwest of the District of Summerland, is reached by the deactivated Peachland Forest Service Road. The park encompasses four lakes: Big Eneas, Little Eneas, Island Lake and Tsuh or Deer Lake. Side roads off the Forest Service Road provide vehicle access to Big Eneas and Tsuh Lakes. Access to Little Eneas and Island lakes is by boat and/or foot.

A dam on the outlet of Big Eneas Lake stores water for the Summerland Irrigation District. When the water level is at or near maximum, Big and Little Eneas lakes form a single lake about 25 ha in size. Tsuh Lake is also dammed at the outlet and provides water to the Summerland Irrigation District.

Two cabins on Tsuh Lake that are open to the public are maintained by the Peachland Sportsman's Association. Big Eneas Lake has 3 user-maintained campsites and a pit toilet. There are several trails, some of which are designated for horse use. These have been improved and are maintained.

The lakes, with their limited access, provide a remote angling opportunity. Rainbow trout is the sole sports fish in lakes. Big Eneas, Little Eneas and Tsuh lakes are maintained by wild rainbow trout production. Island Lake has been stocked with rainbow trout since 1980. The access limitations create very low angling effort that leads to a surplus of wild fish production, resulting in generally small bodied fish. The Peachland Sportsman's Association restored the Eneas Lakes dam spillway for fish passage by constructing weirs downstream of the spillway and a low flow channel through the spillway.

Eneas Lakes Park provides potential habitat for great blue herons, gopher snakes and blue-listed flammulated owls. Aquatic plants include water lilies and marsh grass. Hyalella shrimp are also present.

Cattle grazing occurs in the park under park use permit. The park is part of a guide outfitter area under park use permit.

### Primary Role

The park protects a small portion of the Thompson Plateau representative of the Montane Spruce biogeoclimatic subzone/variant. The purpose is to conserve special feature examples of forest, riparian and aquatic habitats.

## Secondary Role

The park provides local residents with recreational opportunities for remote camping, fishing, hunting, hiking, boating/canoeing and snowmobiling.

## Protected Area Values and Significance Summary Matrix

### Conservation:

#### Representation

##### Ecosection

- Northern Okanagan Basin (NOB)- contributes only .08 % to the protected areas system representation of this ecosection. 5.02 % of the total ecosection area within the province is protected.

Western Okanagan Highland (WOU) substantial contribution of 15.25 % to the protected areas system representation of this under – represented ecosection (2.56 % protected).

##### Biogeoclimatic subzone/variant

- MS dm2 – moderate contribution (10.6%) to the protected areas system representation of this subzone/variant. This subzone/variant is poorly represented (3.2%) in the protected area system.

IDF dk2 – minor contribution (0.11%) to the protected areas system representation of this subzone/variant. This subzone/variant is poorly represented (2.9 %) in the protected area system.

#### Special Features

- Forest, riparian and aquatic habitat

#### Rare/Endangered Values

- Habitat for flammulated owl.

#### Scientific/Research Opportunities

**Recreation:**

Representation

Backcountry

Destination

Travel corridor

Local recreation

Provides walk-in and remote fishing opportunities for wild and stocked rainbow trout, camping, hiking, horseback riding, hunting and snowmobiling opportunities.

Special Opportunities

Education/Interpretation Opportunities

**Cultural Heritage:**

Representation

Special Feature

**Other Management Considerations:**

Other Designations

Relationship to Other Protected Areas

Collaborative Management Arrangements

Partnerships  There is a management arrangement with the Peachland Sportsman's Association to maintain the cabins in the park.

Vulnerability

Relationship to Other Strategies

**Area**  
1,036 hectares.

**Date of establishment**  
May 21, 1968.

## Management Issues

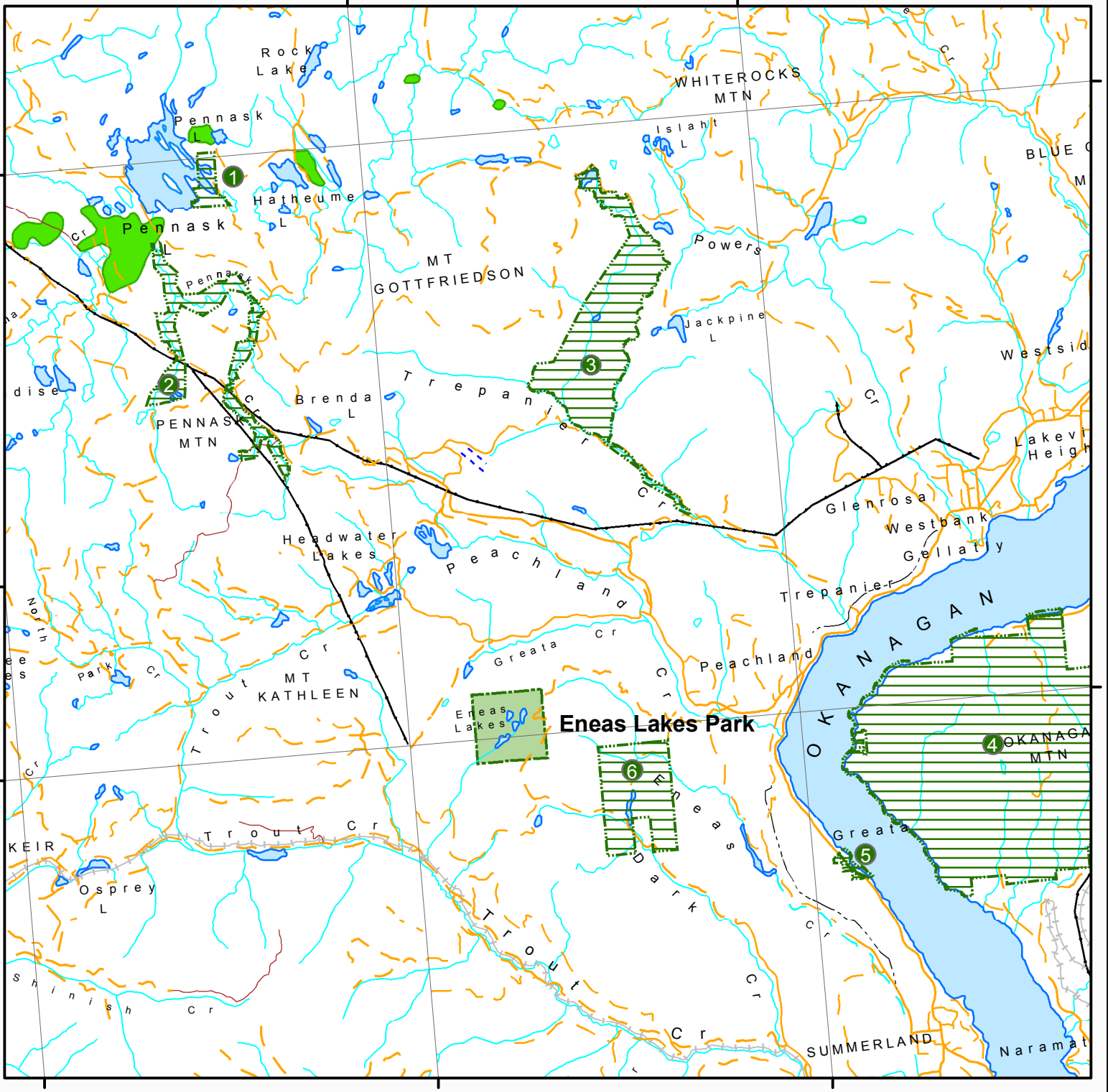
| Known Management Issues  | Response   |
|--|--|
| Visitors desire an increase in the size of the fish, particularly in the Eneas/Islands lakes chain.                            | Work with the Peachland Sportsman’s Association to assess the situation. Review Island Lake stocking numbers to determine if a reduction in stocking may lead to increased fish size. Little can be done to increase fish size in wild fish lakes unless access is improved. |
| The presence of cattle in campground area affects recreational use.  | Work with the rancher to implement appropriate remedial measures and ensure an appropriate range use plan and park use permit are developed for the park.  |
| Fluctuating water levels in the dammed lakes affects recreational opportunities.   | Develop a formal agreement with the District of Summerland to maintain optimum lake levels to benefit angling and other water-based recreation.  |
| Recent increase in ATV use and illegal trail cutting and widening is impacting the hiking trail system and hiking experiences. | ATV use in the park is limited to the road to Eneas Lake campground and the road to Tshuh Lake. No motorcycle or ATV use is permitted beyond these points. Work with ATV clubs to stop this activity. Remedial measures may require occasional enforcement blitzes.          |


## Zoning

The entire park is zoned Nature Recreation to protect scenic values and to provide for backcountry recreation opportunities in a largely undisturbed natural environment.





**Figure 1: Regional Context**

**Eneas Lakes Park**






Produced in February 2007 for  
Ministry of Environment  
by Ministry of Agriculture and Lands  
Integrated Land Management Bureau

|   |                              |
|---|------------------------------|
|  | <b>Eneas Lakes Park</b>      |
|  | <b>Other Protected Areas</b> |
|  | <b>Highway</b>               |
|  | <b>Road</b>                  |

**Other Provincial Protected Areas**

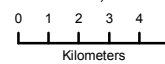
- ① Pennask Lake Park
- ② Pennask Creek Park
- ③ Trepanier Park
- ④ Okanagan Mountain Park
- ⑤ Okanagan Lake Park
- ⑥ Darke Lake Park



Projection: UTM Zone 11  
Datum: NAD83

This is a visual representation  
only and should not be used for  
legal purposes

1:250,000



Kilometers

