

**Thompson River District**

**MANAGEMENT DIRECTION  
STATEMENT**

**February 2001**

**for Greenstone Mountain  
Provincial Park**



**BRITISH  
COLUMBIA**

**Ministry of Environment  
Lands and Parks  
BC Parks Division**



Ministry of  
Environment,  
Lands and Parks

BC Parks  
Headquarters  
2nd Floor, 800 Johnson  
Victoria, BC V8V 1X4  
Phone: (250) 387-5002  
Fax: (250) 387-5757

# APPROVALS

## KAMLOOPS GOAL 2 PROTECTED AREAS MANAGEMENT DIRECTION STATEMENTS - GOAL 2 BINDER APPROVALS PAGE

### Forward

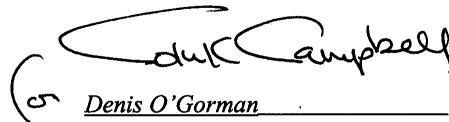
This binder contains 32 management direction statements developed under the direction of the Kamloops Land and Resource Plan Implementation Table and BC Parks. The government designated these protected areas in May, 1996. The 32 management direction statements provide strategic direction for these protected areas. Protected areas' roles, strategies and objectives will not change extensively over time. Management actions, implemented through operations plans, however, will change as priorities, funding and support resources come available.

- |  |  |
|--|--|
| <input type="checkbox"/> Adams Lake Park                       | <input type="checkbox"/> Hiuihill Creek Park.              |
| <input type="checkbox"/> Adams Lake Marine Park - Poplar Point | <input type="checkbox"/> Lac Le Jeune Park.                |
| <input type="checkbox"/> Adams Lake Park – Spillman Beach      | <input type="checkbox"/> Monte Creek Park                  |
| <input type="checkbox"/> Banana Island Park                    | <input type="checkbox"/> Mount. Savona Park                |
| <input type="checkbox"/> Bedard Aspen Park                     | <input type="checkbox"/> Mud Creek Delta Park              |
| <input type="checkbox"/> Blue River Black Spruce Park          | <input type="checkbox"/> North Thompson Islands Park       |
| <input type="checkbox"/> Blue River Pine Park                  | <input type="checkbox"/> North Thompson Oxbows East Park   |
| <input type="checkbox"/> Caligata Park                         | <input type="checkbox"/> North Thompson Oxbow Jensen Park  |
| <input type="checkbox"/> Castle Rock Hoodoos Park              | <input type="checkbox"/> North Thompson Oxbow Manteau Park |
| <input type="checkbox"/> Chu Chua Cottonwood Park              | <input type="checkbox"/> Painted Bluffs Park               |
| <input type="checkbox"/> Eakin Creek Canyon Park               | <input type="checkbox"/> Pritchard Park                    |
| <input type="checkbox"/> Eakin Creek Canyon Park               | <input type="checkbox"/> Pyramid Creek Falls Park          |
| <input type="checkbox"/> Eakin Creek Floodplain Park.          | <input type="checkbox"/> Tsintsunko Lakes Park             |
| <input type="checkbox"/> Epsom Park.                           | <input type="checkbox"/> Wallachin Oxbows Park             |
| <input type="checkbox"/> Finn Creek Park.                      | <input type="checkbox"/> Wire Cache Park                   |
| <input checked="" type="checkbox"/> Greenstone Mountain Park.  |  |
| <input type="checkbox"/> Harbour - Dudgeon Park.               |  |
| <input type="checkbox"/> Harry Lake Aspen Park.                |  |

Approved by:

Monty Downs  
Monty Downs  
District Manager  
Thompson River District

Date: 99/11/30

  
Denis O'Gorman 2001.04.06  
Denis O'Gorman  
Assistant Deputy Minister  
Parks Division

Date: 99/12/29

## Table of Contents

<b>Introduction .....</b>	<b>1</b>
Purpose of the MDS .....	1
Setting and Context.....	1
<b>Protected Area Attributes.....</b>	<b>1</b>
Conservation.....	1
Recreation and Tourism.....	1
Cultural Heritage .....	3
Significance in the Protected Areas System.....	3
<b>Land Uses, Tenures and Interests .....</b>	<b>3</b>
Access.....	3
Existing Tenures .....	3
Adjacent Patterns of Land Use.....	3
First Nations Interests .....	3
Other Agency Interests.....	4
Private and Public Stakeholder Interests .....	4
<b>Protected Area Role Statement .....</b>	<b>4</b>
<b>Management Commitments and Issues .....</b>	<b>4</b>
Integration with Other Land Use Planning Processes .....	4
Longer Term Issues and Concerns.....	4
Short Term Issues and Concerns .....	5
<b>Management Direction .....</b>	<b>5</b>
Management Objectives and Strategies.....	5
Consultation and Future Planning .....	5
Zoning Plan.....	5
<b>Appendix I - Table of Acceptable Activities, Uses and Facilities.....</b>	<b>7</b>
<b>Figures</b>	
Figure 1 - Location Map.....	2
Figure 2 - Zoning Map.....	6

# **Greenstone Mountain Park Management Direction Statement**

## **Introduction**

### **Purpose of the MDS**

Management direction statements (MDS) provide strategic management direction for all protected areas that do not have a full management plan. MDS do not negate the need for future, more detailed management plans. Management direction statements also describe protected area values, management issues and concerns; management strategy focused on immediate priority objectives and strategies; and, directional statements from other planning processes. While strategies may be identified in the MDS, the completion of all these strategies is subject to funding and funding procedures. In addition, all development associated with these strategies within the protected area is subject to the BC Parks Impact Assessment Policy. This management direction statement is intended to provide direction and guidelines for managing Greenstone Mountain Park for the foreseeable future.

### **Setting and Context**

- The 98-hectare Greenstone Mountain Park protects a small, accessible sub-alpine area close to Kamloops. It is situated 36 kilometers southwest of Kamloops, and is accessed from the Trans Canada Highway at Cherry Creek along a good gravel road.
- This protected area was recommended through the Kamloops LRMP process and formally established in Schedule E of the *Park Amendment Act, 1997*.

## **Protected Area Attributes**

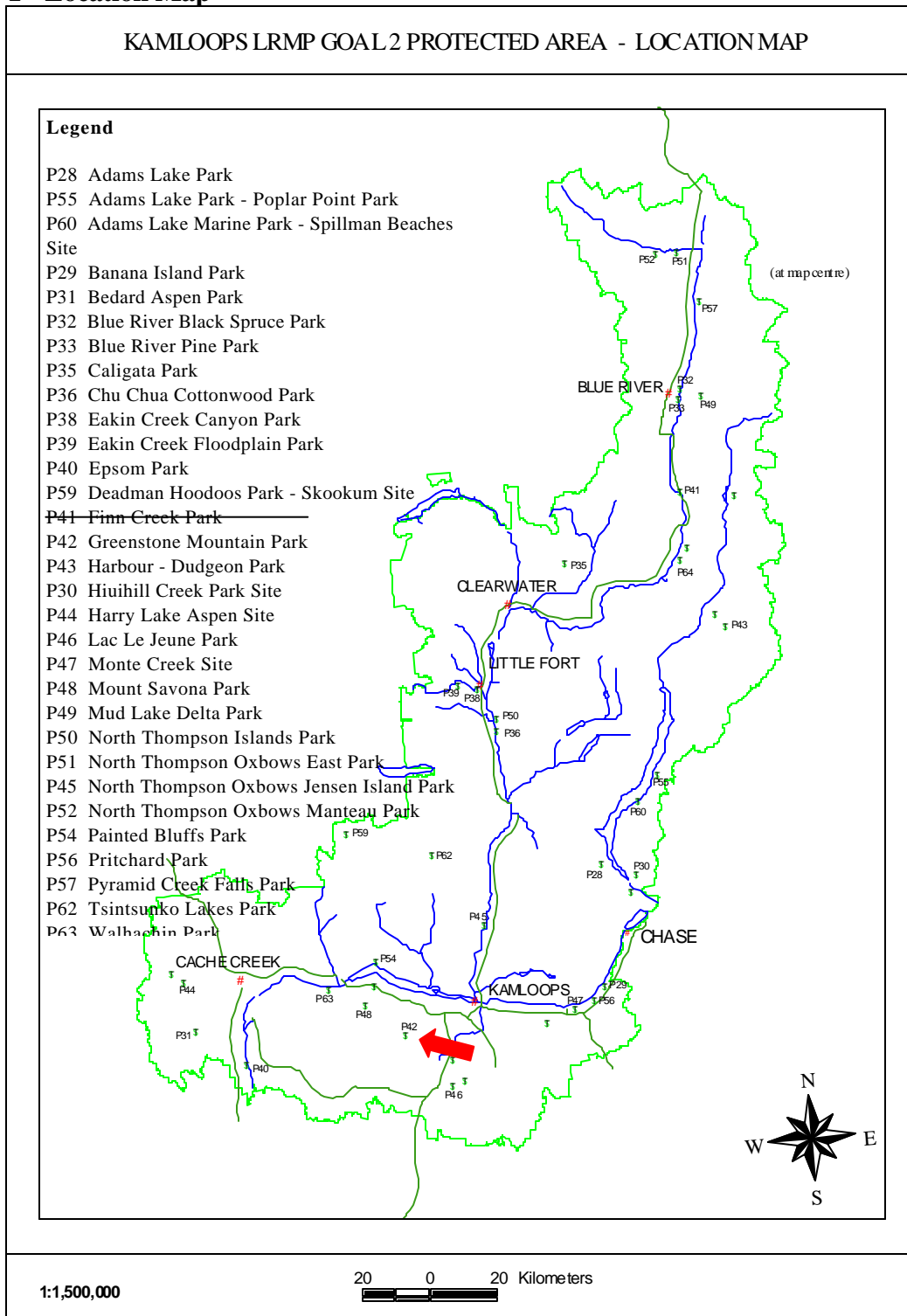
### **Conservation**

- Series of high elevation grasslands with elevational gradient of 250 metres extending down from the top of Greenstone Mountain
- The park includes grassland and forested habitats of the MSxk (Very Dry Cool Montane Spruce) and ESSFxc (Very Dry Cold Engelmann Spruce – Subalpine fir) subzones of the Southern Thompson Uplands Ecoregion.
- Includes most northerly occurrence of *Artemisia tridentata* var *vaseyana* (Vasey's big sagebrush)
- High elevation grasslands, uncommon in the Southern Thompson Uplands Ecoregion, are in excellent condition with fescue, bluebunch wheatgrass and a wide variety of forbs; excellent spring floral displays.
- Grasslands bordered by a mixed forest of lodgepole pine, spruce, sub-alpine fir, Douglas-fir, and aspen
- Talus and cliff faces add to the diversity of habitats
- Large Greenstone fire in 1998 burned partly into the northeast corner of the park

### **Recreation and Tourism**

- Mountain top accessible by road; panoramic views of surrounding hills, lakes and dry valleys of the Thompson valley
- Hiking, bird watching, nature study

**Figure 1 - Location Map**



- Established motorized (ATV) trails cross through the area
- Snowmobile destination site

## **Cultural Heritage**

- Unknown

## **Significance in the Protected Areas System**

- Protects a small area of high elevation grasslands of the MSxk and ESSFxc subzones of the Southern Thompson Uplands that are not represented in larger protected areas
- Adds a high elevation grassland to the series of grassland communities protected in the parks the region (Lac du Bois, Arrowstone, Juniper Beach, Cornwall, Bedard Aspen, Harry Lake Aspen)

## **Land Uses, Tenures and Interests**

### **Access**

Access to the park involves a variety of logging road systems that connect from the south, northeast and northwest. The shortest route is fifteen kilometres and heads in from the Trans Canada Highway, about 14 kilometres west of Kamloops. All of these roads are in reasonable (two-wheel drive truck) gravel condition.

### **Existing Tenures**

Park designation under the *Park Amendment Act* ensures that all existing liens, charges and encumbrances other than those applying to commercial logging, mining or energy exploration and development will continue to be authorized through issuance of park use permits. This policy recognizes all existing *Land Act* tenures, water rights, trapping licences and other legal tenures and rights. Park designation provides for continuance of existing grazing under administration of the *Range Act*.

- All private lands are excluded
- The area on top of Greenstone Mountain including the various land act tenures for communications facilities etc., and the road to the top of the mountain were excluded to simplify administration of the park.

### **Adjacent Patterns of Land Use**

- Logging roads and cutblocks on all sides
- Large burn area to the north of the park
- Cattle graze throughout the area
- Communications facilities and access road are excluded from the park, but are contained as exclusions within the park.
- Extensive motorized use trail systems cross through the park

### **First Nations Interests**

- Management of the park will require ongoing consultation with the Shuswap Nation to incorporate First Nations interests.
- Bands consulted have expressed a desire for exclusion of motorized use and a philosophy of no development, promotion or increased access.

## **-Other Agency Interests**

- The park will be managed in close co-ordination with various resource agencies, particularly BC Environment and Ministry of Forests.
  - ⇒ Grazing is managed by Ministry of Forests
  - ⇒ Trails crossing through the park will be managed as part of an extensive trail system in the Greenstone area

## **Private and Public Stakeholder Interests**

- Communication facilities and access road are surrounded by park
- Grazing licenses

## **Role of the Park**

The primary role of this park is the protection and conservation of natural values of the site. Greenstone Mountain Park protects a small area of high elevation grasslands in the Thompson Valley not represented in larger protected areas. It adds a high elevation grassland to the series of grassland communities protected in the parks of the Thompson River Park District (Lac du Bois, Elephant Hill, Arrowstone, Juniper Beach, Cornwall, Bedard Aspen, Harry Lake Aspen). A secondary role is to allow opportunities for low impact, dispersed types of recreation activities such as hiking, nature study and hunting.

## **Management Commitments and Issues**

### **Integration with Other Land Use Planning Processes**

This management statement, future management plans, and all resulting management actions will follow the intent and criteria set out by the Kamloops LRMP for Greenstone Mountain Park.

### **Longer Term Issues and Concerns**

Specific issues that will be considered in the longer term can be highlighted under the following topics:

#### **Conservation**

- Inventory of conservation values
- Coordination with Ministry of Forests in management of impacts from adjacent logging
- Vegetation management - insect and disease control; fire management; grazing management

#### **Recreation and Tourism**

- Access management, control of ATVs.
- Recreation use - appropriate activities and levels of development, types of facilities, carrying capacities

#### **Culture**

- Inventory and protection of archaeological sites and recognition of any identified traditional native uses in conjunction with local First Nations.

## **Short Term Issues and Concerns**

There are no apparent short-term issues in the park.

## **Management Direction**

### **Management Objectives and Strategies**

The Table of Acceptable Activities, Uses and Facilities outlines guidelines for managing uses, activities and facilities in the park. These guidelines reflect the intent of the LRMP and, in general principle, follow the policies as set out for use and management of provincial park Natural Environment zones.

In addition to accepting the basic principles of maintaining existing tenures and rights, the following objectives will direct the short and long-term management of the area:

- To maintain the natural qualities and conditions of the park  
⇒ Work with local recreational groups and Ministry of Forests to direct ATV use to designated trails.
- To maintain ongoing consultation with First Nations
- To maintain the visual, recreational and tourism values
- To discourage the introduction of non-native plant species
- To provide for continued recreation use with opportunities for hiking, bird watching, nature study, day use

### **Consultation and Future Planning**

Planning and management of the park will conform to the intent and directions as set forth in the Provincial Protected Areas Strategy. BC Parks is accountable for planning, administration and management of the park through application of the laws, policies and regulations granted under the *Park Act*. BC Parks will coordinate with other agencies, the LRMP table, various public planning groups and First Nations in developing management plans for all of the new parks arising from the Kamloops LRMP.

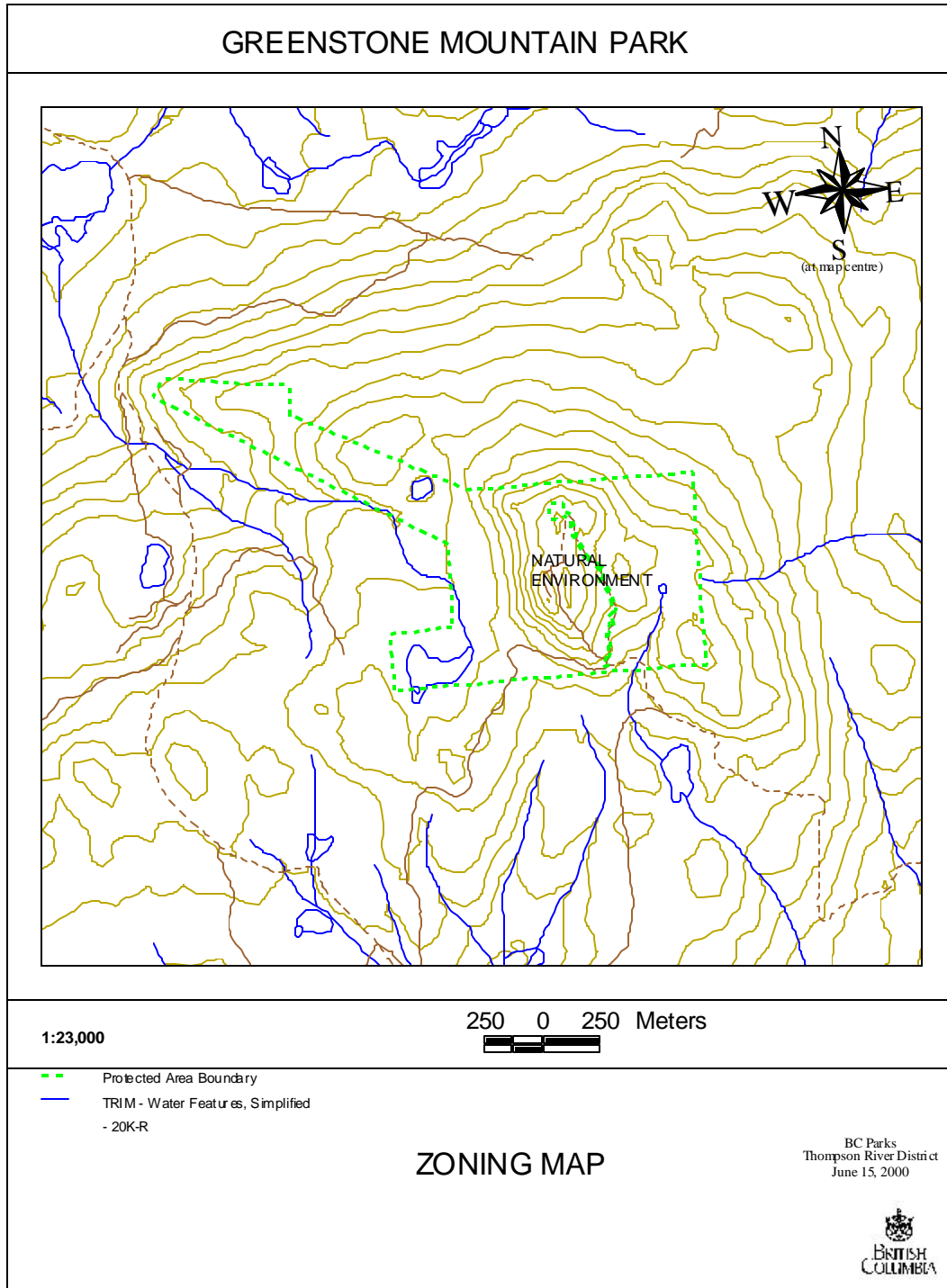
This Management Direction Statement has been reviewed and approved in principle by the Kamloops LRMP implementation team.

### **Zoning Plan**

The zoning plan as shown on the adjoining page reflects the intent of the LRMP recommendations for Greenstone Mountain Park. The park is zoned as Natural Environment to maintain the area in a natural condition while allowing some recreational use.



Figure 2 - Zoning Map



**Appendix I - Table of Acceptable Activities, Uses  
and Facilities for Greenstone Mountain Park**

Activity/Use Facility	Natural Environment
Hunting	Y
Fishing	N/A
Trapping	N2
Grazing (domestic livestock)	Y
Recreational Gold Panning/Rock Hounding	N
Utility Corridors	N/2
Communication Sites	N/2
Horse Use/Pack Animals	Y <sup>3</sup>
Guide Outfitting (hunting)	Y <sup>2</sup>
Guide Outfitting (fishing)	N/A
Guide Outfitting (nature tours)	Y <sup>2</sup>
Guide Outfitting (river rafting)	N/A
Cat-Assisted Skiing	N
Ski-Hills	N/A
Heli-skiing	N
Heli-hiking	N
Tourist Infrastructure - Resorts	N
Backcountry Huts / Lodges / Cabins / Guest Ranches	N
Water Control Structures	N
Fish Stocking and Enhancement	N/A
Road Access	Y <sup>1</sup>
Off-road Access (snowmobiling)	Y
Off-road Access (motorized)	Y <sup>3</sup>
Off-road Access (mechanical activities)	Y <sup>3</sup>
Motorized Water Access	N
Aircraft Access	N
Fire Management (Prescribed) Wildlife Management Prevention & Preparedness Prescribed Fire Management	N1
Fire Management (suppression)	Y
Forest Insect / Disease Control	N1
Noxious Weed Control	Y
Exotic Insect / Disease Control	Y
Scientific Research (specimen collection)	N1
Scientific Research (manipulative activities)	N1

Y= allowed, subject to conditions identified in the interim management statement or management plan  
 N= not allowed  
 N1= allowed for expressed management purposes only  
 N2= not normally allowed, but if present at time of PA establishment, will normally be allowed to continue

<sup>1</sup> Road access plan for this area designates open and closed roads  
<sup>2</sup> By permit only  
<sup>3</sup> On designated trails only  
<sup>4</sup> On designated lakes only