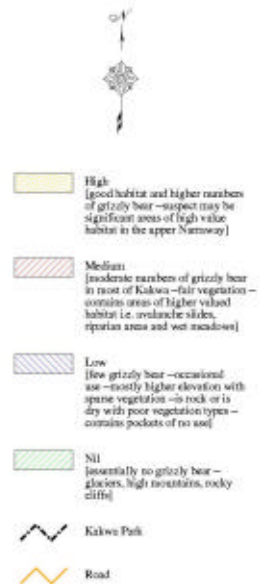
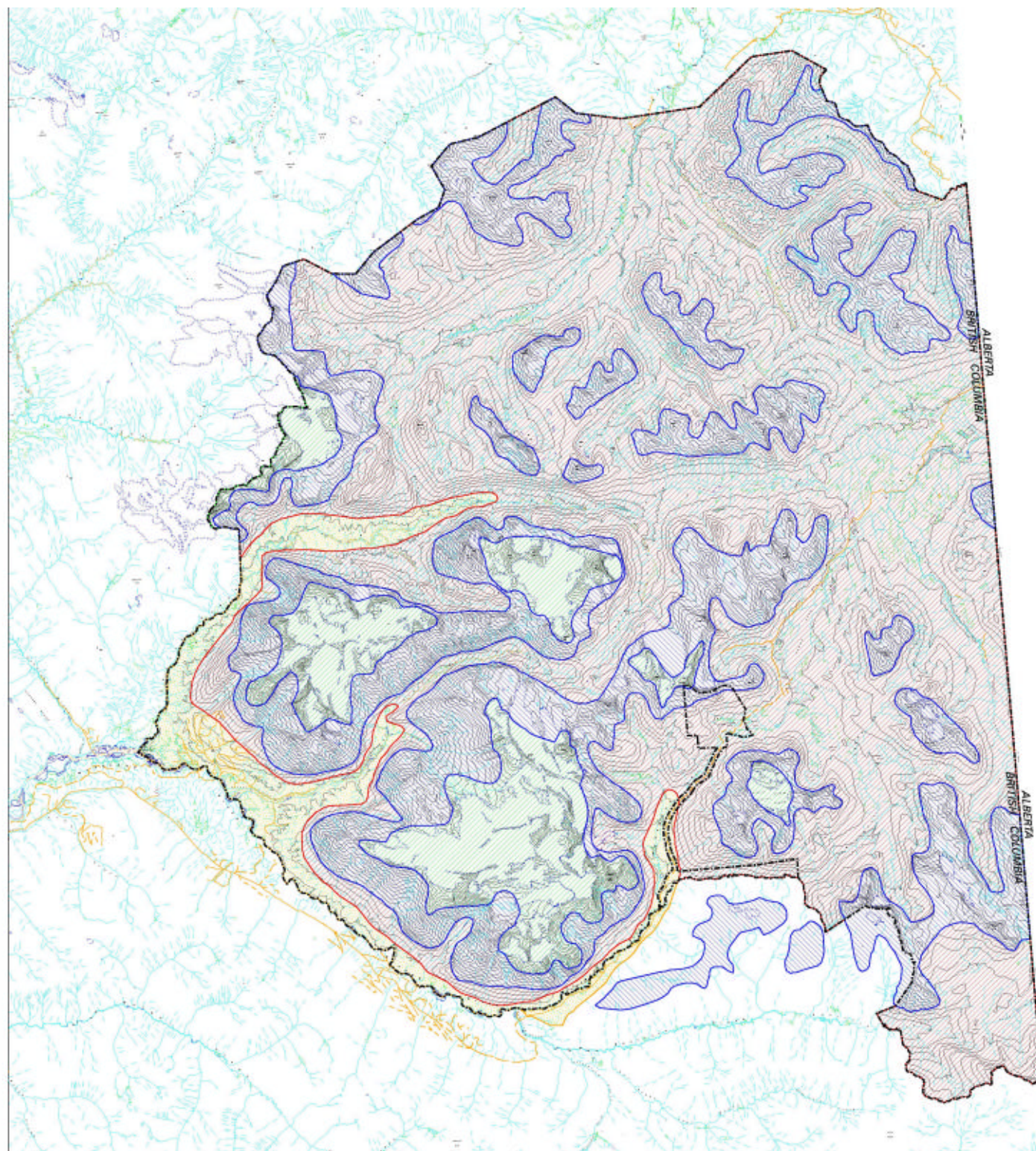


# Grizzly Bear Habitat Kakwa Park



## Grizzly

There is no specific inventory for grizzly bear in the Kakwa. Habitat classification is based on the professional judgement of wildlife biologists in Port St. John and Prince George having long familiarity with the area. Canada Land Inventory mapping and BC Biophysical mapping were referenced, but all biologists considered both erroneous especially for the part of the Kakwa within the Front Ranges Ecosystem.

Grizzly bear and their sign are readily observed throughout the Kakwa, except at the highest elevations dominated by ice and rock and the dry ridge tops in the northeast (Front Ranges Ecosystem). While most of the area is zoned as 'medium' habitat, riparian areas, wet meadows (especially in the subalpine) and south-facing avalanche alder deserve a 'high' rating.

The wetter lowlands and richer habitats of Jarvis, Kirchi and the McGregor are zoned 'high'.



Projection: Albers  
Datum: NAD83  
Scale: 1:50000  
Created for Mike Martha  
September 2011  
BC Parks  
Prince George District  
Location: c/kakwa