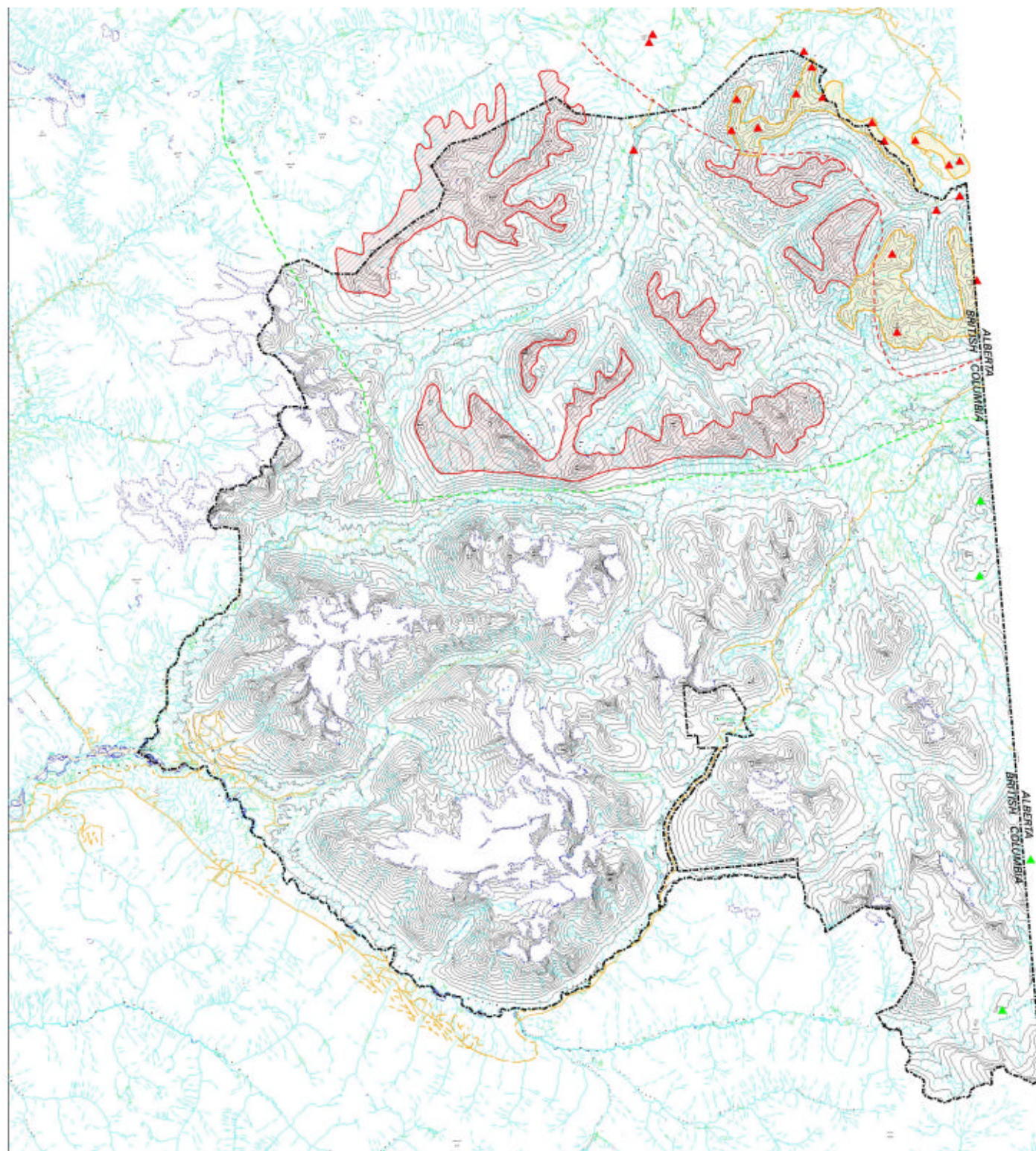


# Sheep Habitat Kakwa Park



- 
-  High  
[key winter range, however other sites used]
  -  Median  
[key summer range, however they also use the area marked as 'winter range' in the summer]
  -  Western limits of use in the winter.
  -  Western limits of use in the summer.
  -  Kakwa Park
  -  Road
  -  Location of winter sightings
  -  Location of possible summer use by Alberta sheep although there have been no recent reports

## Sheep

There is only scattered inventory data and it is almost entirely winter information.

In average and lower snowpack winters, the sheep occupy a variety of sites from Mt. Nimrod and Gorman, north through the Sares, inside the Park and to Saxon Ridge and Omega Hill outside the park. Key areas are marked in yellow, however, they do use other sites especially in lowlands along Sares River and Gorman Creeks.

In heavy snow pack winter almost all sheep leave the park and BC for lower snow areas in Alberta.

In the summer the sheep disperse westward along the ridges north of Jarvis Lake to Dinastide Lake, to the ridges between the Narraway and Belcourt and even to the headwaters of Red Deer Creek and points further north. However, routes of travel and habitat used are unknown.

In 2001, perhaps due to intense industrial activity in Alberta (oil, gas and forestry) large numbers of sheep have been reported in the Park (Mt. Gorman area) and outside the park to the north.

There is no recent information on sheep use of the southern parks along the Alberta border however, some summer use of the Cheval Hill and Sheep Creek areas should be expected.



Projection: Albers  
 Datum: NAD83  
 Scale: 1:50000  
 Created for Mike Martha  
 November 2001  
 BC Parks  
 Prince George District  
 Location: c:\bakins