

Kootenay District

**MANAGEMENT DIRECTION
STATEMENT
May, 1999**

**for Kokanee Glacier
Provincial Park Addition**



**BRITISH
COLUMBIA**

**Ministry of Environment
Lands and Parks
BC Parks Division**



KOOTENAY GOAL 1 PROTECTED AREAS MANAGEMENT DIRECTION STATEMENTS BINDER APPROVALS PAGE

Forward

This binder contains eleven management direction statements developed under the direction of the Kootenay CORE Land Use Plan and Implementation Strategy and BC Parks. The government designated these protected areas under the *Park Act*. The eleven management direction statements provide strategic direction for these protected areas until management plans can be developed with full public involvement. Protected areas' roles, strategies and objectives will not change extensively over time. Management actions, implemented through operations plans, however, will change as priorities, funding and support resources come available.

- Goat Range Park
- Kianuko Park
- Kokanee Glacier Park additions
- Lockhart Creek Park
- Purcell Wilderness Conservancy Park - West Addition
- Syringa Park
- West Arm Park
- Purcell Wilderness Conservancy Park- East Addition
- Akamina-Kishinena Park
- Gilnockie Park
- Cummins Lakes Park

Approved by:

District Manager
Kootenay District
BC Parks Division

Assistant Deputy Minister
Park Management Committee
BC Parks Division



Table of Contents

I.	Introduction	
A.	Setting and Context	1
II.	Protected Areas Attributes	1
A.	Conservation.....	1
B.	Recreation.....	1
C.	Cultural Heritage	1
D.	Significance in the Protected Areas System	1
III.	Land Use, Tenures and Interests	1
A.	Access.....	1
B.	Existing Tenures	4
C.	Existing Land Use, Activities and Facilities	4
D.	Adjacent Patterns of Land Use	4
E.	First Nations Interests	4
F.	Other Agency Interests	4
G.	Private and Public Stakeholder Interests	4
IV.	Management Commitment and Issues	
A.	Management Direction from Previous Planning.....	4
B.	Management Issues.....	4
V.	Management Strategy	
A.	Priority Management Objectives and Actions	5
B.	Consultation and Future Planning	5
C.	Zoning Plan.....	5
	Appendix A.....	8
	Figures:	
	Figure 1 - Regional Context Map	2
	Figure 2 - Park Reference Map.....	3
	Figure 3 - Zoning Plan	7

Purpose of Management Direction Statements

Management Direction Statements provide strategic management direction for all protected areas which do not have a full management plan. MDS do not negate the need for future, more detailed management plans. Management Direction Statements also describe protected area values management issues and concerns; management strategy focused on immediate priority objectives and strategies; and, directional statements from other planning processes

KOKANEE GLACIER PROVINCIAL PARK ADDITION

MANAGEMENT DIRECTION STATEMENT

I. Introduction

A. Setting and Context (Figure 1)

Kokanee Glacier Park is located in southeast British Columbia, 30 kilometres northeast of Nelson, between Slocan and Kootenay Lakes in the Selkirk Mountains. The addition of 6,203 ha includes much of the former Kokanee Glacier Recreation Area. With this addition, Kokanee Glacier Park is now 32,035 hectares. The park addition protects key grizzly bear habitat.

This area was recommended for protection in the West Kootenay Boundary Land Use Plan and received Class A provincial park status on July 12, 1995 under the *Park Amendment Act, 1995*.

II. Protected Area Attributes (Figure 2)

A. Conservation

- represents mostly the high elevations of Alpine Tundra (AT) and Selkirk Wet Cold Engelmann Spruce - Subalpine Fir Variant (ESSFwc4) and some Columbia - Shuswap Moist Warm Interior Cedar - Hemlock Variant (ICHmw2) of the Central Columbia Mountain (CCM) Ecosection

B. Recreation

- supports hiking, skiing, mountaineering, wildlife viewing and fishing, given the park's proximity to Nelson, Kaslo, and Slocan
- contains Cutthroat Trout stocked lakes

C. Cultural Heritage

- early mining with old mines, trails, cabins and artifacts
- typical of high altitude galena mines from the 1890s to the 1930s
- no known First Nations values

D. Significance in the Protected Areas System

- high conservation value given grizzly bear habitat
- high recreation given potential demand for recreation use from nearby communities
- regionally significant cultural values of early mining

III. Land Use, Tenures and Interests

A. Access

- from Highway 31, up Coffee Creek.

B. Existing Tenures

- six mineral claims
- trapline License No. RT117960 Territory No. 0418T004

Kootenay District

Park Location

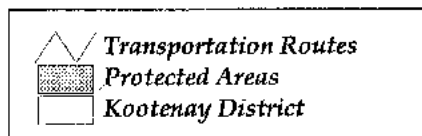
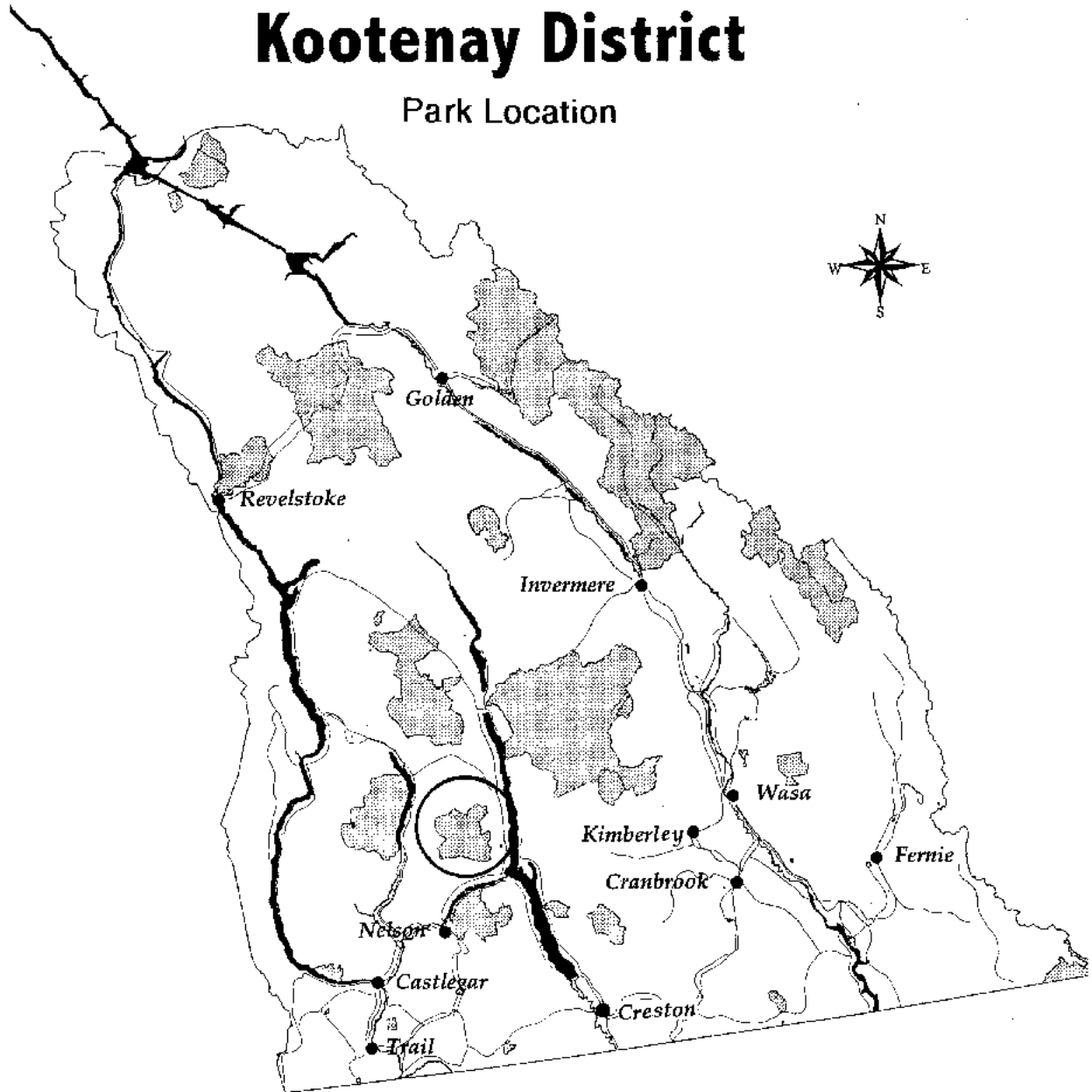
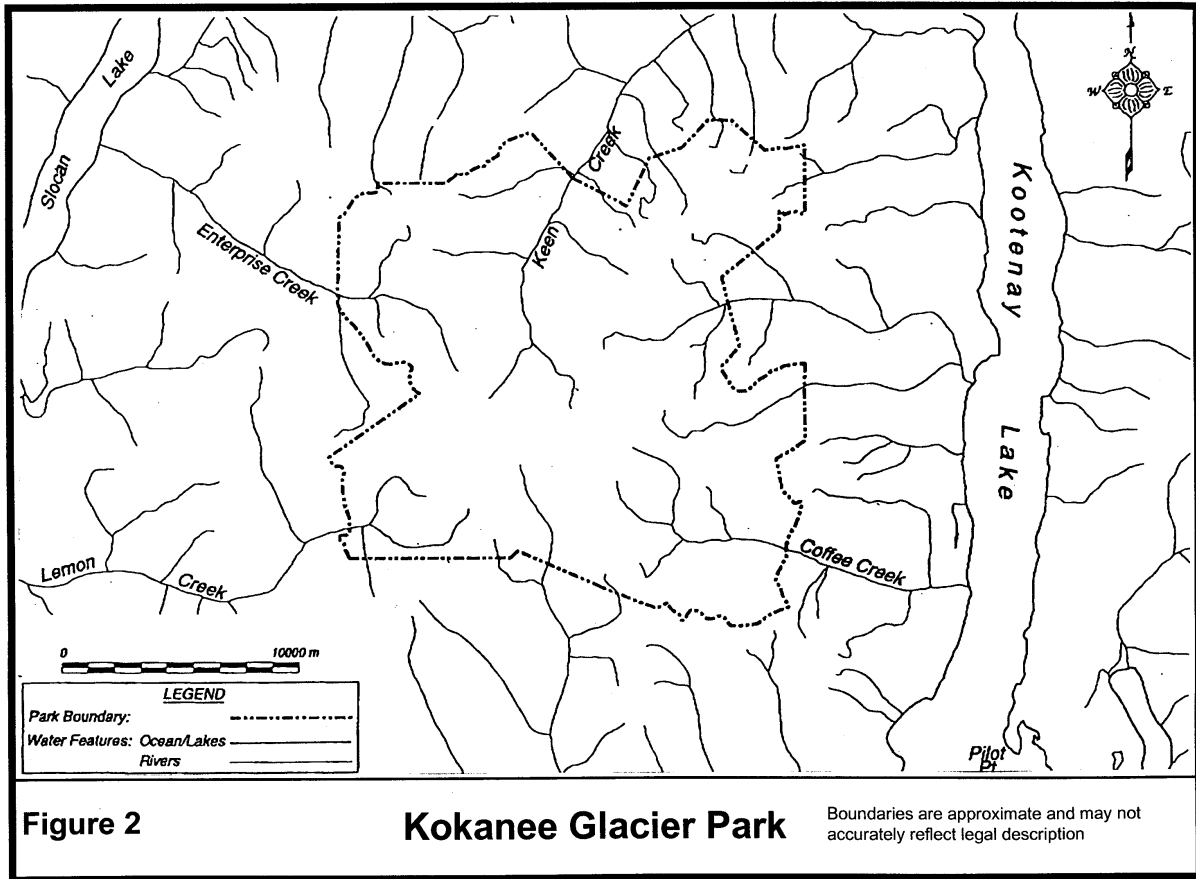


Figure 1

NTS



C. Existing Land Use Activities and Facilities

- no facilities in the park addition

D. Adjacent Patterns of Land Use

- active logging pressure surrounding the park
- mineral exploration mainly in the Klawala Creek area

E. First Nation Interests

- two First Nations tribal councils (Ktunaxa/Kinbasket and Shuswap) have included Kokanee Glacier Park within their asserted traditional territory
- while direct consultation with tribal council representatives on this management direction statement was requested limitations of time and resources have prevented First Nations from participating
- this management direction statement provides a foundation upon which continued relationships between BC Parks and First Nation tribal councils are based

F. Other Agency Interests

- BC Environment (BCE) biodiversity objectives; health of wildlife populations; administration of trapping tenures
- Ministry of Small Business, Tourism and Culture (STC) - opportunities for viable commercial tourism
- Ministry of Forests (MOF) - adjacent recreational activities; adjacency issues such as access, visual quality, connectivity

G. Private and Public Stakeholder Interests

- hikers
- mineral claim holders
- environmental groups concerned about protected area management
- trapper

IV. Management Commitments and Issues

A. Management Direction from Previous Planning

- existing tenure for trapping will continue under Park Use Permit
- natural occurrences such as fires and forest diseases will be managed as in other parks through consultation and joint action by BC Parks and Ministry of Forests districts
- objectives and strategies of the Kootenay Boundary Land Use Plan Implementation Strategy (KBLUP -IS) Chpt 4

B. Management Issues

- previously harvested areas require silvicultural prescription and possible road deactivation
- resolution of road access to park boundary
- forest harvesting adjacent to park boundaries
- spillover snowmobile and ATV use along southern boundary of the park from Redfish Creek

V. Management Strategy

While key strategies or actions are identified, the completion of all these strategies is subject to funding and funding procedures. As such, strategies are ranked according to priority and completed as funding permits. As well, all development within provincial parks is subject to the BC Parks Impact Assessment Policy.

A. Priority Management Objectives and Actions

Objectives

- maintain ecosystem representation of Central Columbia Mountains Ecosection
- ensure protection of grizzly populations and habitat
- manage the area to protect cultural heritage values
- honor commitments in Kootenay and Boundary Land Use Plan
- develop relationship with First Nations to enhance understanding and management of park values
- increase understanding and knowledge of park values
- restore biodiversity of previously harvested areas of Coffee Creek

Actions

- work with BCE and MOF to revegetate logged areas of the addition to a natural condition
- work with other agencies to ensure connectivity of wildlife habitat to the park
- work with MOF to address access and visual concerns
- continue to stock lakes (Silver Tip, Wheeler) but subject to review with BCE
- address existing ATV/snowmobile access through education and by working with recreation user groups
- retain Coffee Creek free of facilities and recreation use to protect bears and people
- work with local First Nations to determine traditional use of the park and discuss management needs
- issue permit to existing trapper
- collect more base data on park values in the addition area overtime

B. Consultation and Future Planning

A Management Plan for Kokanee Glacier Park was approved in 1990. This park addition will be managed in the interim consistently with the direction developed in the management plan with the exceptions as indicated in this management direction statement. Future planning based on public, First Nations and agency input will help to define the long term management direction for the entire park when the management plan is reviewed. This is a moderate priority for the Kootenay District.

C. Zoning Plan (Figure 3)

BC Parks uses zoning as a tool to assist in the planning and management of a provincial park. In general terms, zoning divides a park into logical units for management. It applies uniform and consistent management objectives based on natural, cultural and recreational values, and existing and projected patterns of access and recreation use in relation to specific conservation goals. The zones reflect the intended land use, the degree of human use, level of management and

development permitted. The spectrum includes five zoning options: Intensive Recreation, Natural Environment, Special Feature, Wilderness Recreation and Wilderness Conservation.

The 1990 Management Plan for Kokanee Glacier Park and Recreation Area established zones over the Park and Recreation Area. The zoning for portions of the Recreation Area that now form part of Park addition is upheld in this management direction statement and the new part of the addition area (Coffee Creek) which was not under any previous designation has also been zoned consistent with the management plan.

The Kokanee Glacier Park addition is separated into two management planning zones (figure 3): Wilderness Recreation Zone and Natural Environment Zone.

Wilderness Recreation Zone

The intent of this zone is to place a high priority on conserving the natural environment while providing some level of backcountry use that is consistent with its wilderness atmosphere. Facility development is minimal, at a level sufficient to satisfy user needs and to protect the overall environment of the park.

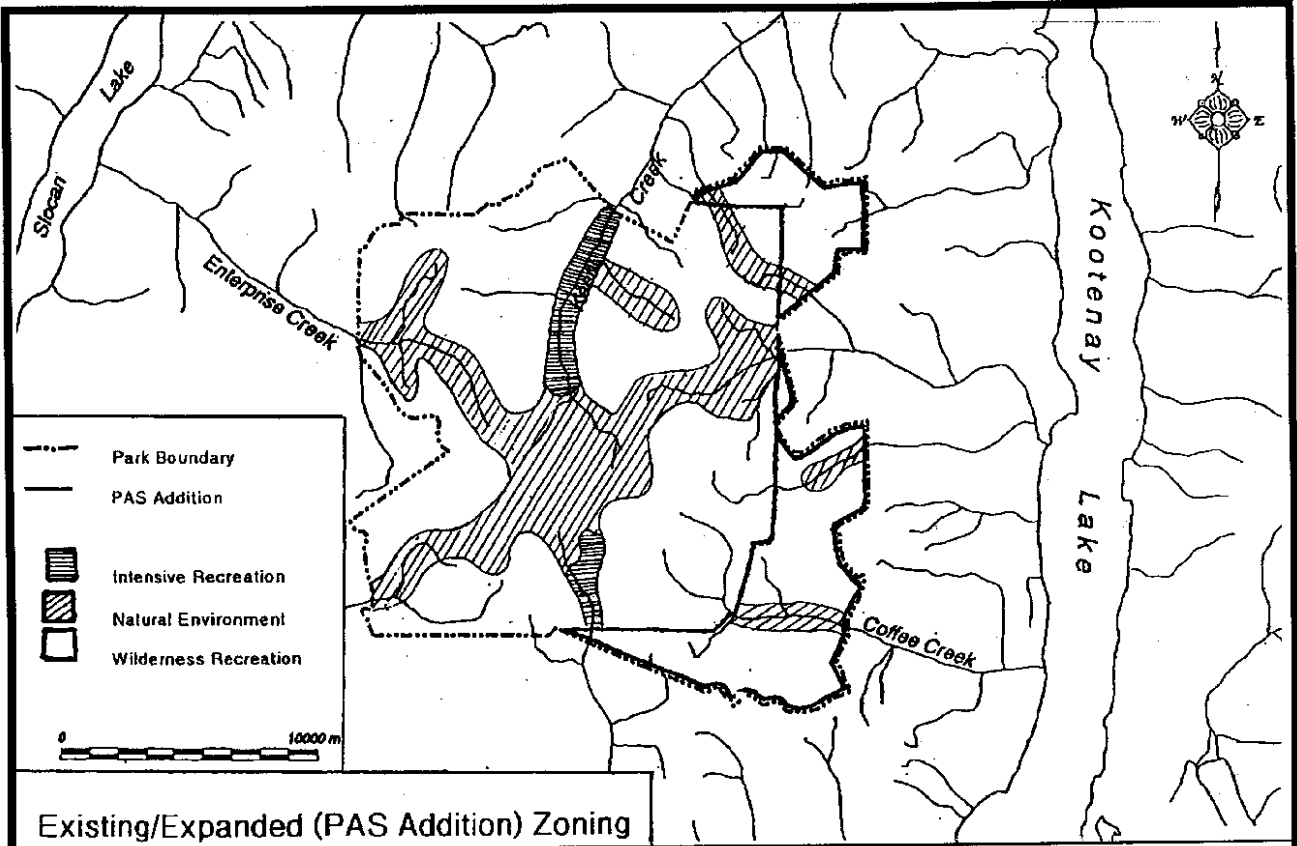
Areas zoned Wilderness Recreation in Kokanee Glacier Park are large natural areas where natural ecological processes occur largely uninfluenced by human activity. Low levels of recreational use are permitted but evidence of human presence is confined to specific primitive facilities and sites. The Wilderness Recreation Zone encompasses approximately 5,560 ha of the park addition.

Natural Environment Zone

The objective of this zone is to provide for a variety of recreational activities in a largely undisturbed natural environment. The intent is to ensure that the activities and facilities do not dominate the natural setting and to provide for a higher level of recreation use than is provided for in the Wilderness Recreation Zone.

In Kokanee Glacier Provincial Park addition, the Natural Environment Zone encompasses Coffee Creek, Wheeler Lake (Lendrum Creek) and Nells Creek. This designation is intended to reflect the current level of use at this site. Although Coffee Creek has been extensively modified it was set aside for the important grizzly bear habitat. The natural environment zone has been applied as an interim step until restoration of wilderness values has been completed. When natural values have been restored zoning should change to Wilderness Recreation or Wilderness conservation.

The Natural Environment Zone covers approximately 640 ha of the park addition .



Existing/Expanded (PAS Addition) Zoning

Figure 3

Kokanee Glacier Park

Boundaries are approximate and may not accurately reflect legal description

Appendix A

Summary Table of Land and Resource Use Commitments

The following table provides a summary of commitments made through land use processes with regard to acceptable uses, activities, and facilities within this protected area.

Activity/Use/Facility	Acceptable Uses
Hunting	M
Fishing	Y
Trapping	N ²
Grazing	N
Rec. Gold Panning/Rock Hounding	N
Utility Corridors	N
Communication Sites	N ¹
Horse Use/Packing	N
Guide Outfitting-Hunting:	N
- Fishing	N
- Nature Tour	M
- River Raft	N
- Mountain Bike	N
Cat-Assisted Skiing	N
Ski Hills	N
Heli Skiing	N
Heli Hiking	N
Camping (Wilderness)	M
Camping (Serviced)	N
Tourist Resorts	N
Back Country Huts/Guest Ranch	N
Water Control Structure	N
Fish Stock/Enhance	M
Road Access	N
Off Road Snowmobile	N
Off Road Motorized	N
Off Road Mechanical	M
Motorized Water Access	N
Aircraft Access	N
Fire Management:	
- Prevention	M
- Prescribed Fire	M
- Suppression	M
Forest Insect/Disease Control	M
Noxious Weed Control	M
Exotic Insect/Disease Control	M
Scientific Research (Specimens)	Y
Scientific Research (Manipulations)	M

Y = allowed subject to the conditions identified in the management direction statement or management plan

M = may be permitted if compatible with protected area objectives

N = not allowed

N¹ = allowed for expressed management purposes only

N² = present and allowed to continue but not normally allowed