

Kootenay District

**MANAGEMENT DIRECTION
STATEMENT**

May, 1999

**for Syringa
Provincial Park**



**BRITISH
COLUMBIA**

**Ministry of Environment
Lands and Parks
BC Parks Division**

Table of Contents

I.	Introduction	
A.	Setting and Context	1
II.	Protected Areas Attributes	1
A.	Conservation.....	1
B.	Recreation.....	1
C.	Cultural Heritage	1
D.	Significance in the Protected Areas System	4
III.	Land Use, Tenures and Interests	4
A.	Access.....	4
B.	Existing Tenures	4
C.	Existing Land Use, Activities and Facilities	4
D.	Adjacent Patterns of Land Use	4
E.	First Nations Interests	4
F.	Other Agency Interests	4
G.	Private and Public Stakeholder Interests	5
IV.	Management Commitment and Issues	
A.	Management Direction from Previous Planning.....	5
B.	Management Issues.....	5
V.	Management Strategy	
A.	Priority Management Objectives and Actions	5
B.	Consultation and Future Planning	6
C.	Zoning Plan.....	6
	Appendix A.....	7
	Figures:	
	Figure 1 - Regional Context Map	2
	Figure 2 - Park Reference Map.....	3

Purpose of Management Direction Statements

Management Direction Statements provide strategic management direction for all protected areas which do not have a full management plan. MDS do not negate the need for future, more detailed management plans. Management Direction Statements also describe protected area values management issues and concerns; management strategy focused on immediate priority objectives and strategies; and, directional statements from other planning processes

SYRINGA PROVINCIAL PARK

MANAGEMENT DIRECTION STATEMENT

I. Introduction

A. Setting and Context (Figure 1)

Syringa Provincial Park, 4,417 ha, is located in southeastern British Columbia 19 km west of Castlegar, on Lower Arrow Lake Reservoir. It includes the two small drainages of Tulip and Syringa creeks with steep rocky canyons at the lower end. It contains the former Syringa Park and the Syringa Creek Ecological Reserve Proposal.

This area was identified as meeting Protected Areas Strategy criteria and proposed by the Commission on Resources and Environment. Recommended in the West Kootenay Boundary Land Use Plan, this area received Class A provincial park status on July 12, 1995 under the *Park Amendment Act, 1995*.

II. Protected Area Attributes (Figure 2)

A. Conservation

- represents the Selkirk Foothills (SBF) Ecosection which had less than one percent protected
- is diverse, given location in a rain shadow, on the edge of two distinctly different ecosections, (SBF) and Central Columbia Mountains (CCM)
- represents provincially significant Undifferentiated Interior Douglas-fir (IDFun) subzone
- represents low elevation Interior Douglas-fir forests, which are found only in this part of the province and are not well-represented in other protected areas
- contains bunchgrass and ponderosa pine; two species not normally found in the region that are under-represented in protected areas in the province
- protects red and blue listed species, including Bighorn sheep, Canyon Wren, Bull trout and Columbia red-tailed chipmunk and possibly interior Townsend's big eared bat
- provides habitat for elk, deer, cougar, Western skink and Alligator lizard.

B. Recreation

- has all-season demand for many recreational activities including boating, camping, hiking, picnicking, swimming, fishing, watersports, wildlife viewing
- contains key recreation features of Tulip Creek waterfall, day use picnicking and swimming beaches
- scenic viewscape, the area is visible from Lower Arrow Reservoir
- offers sports fishing for Rainbow trout, Bull trout, and Kokanee salmon

C. Cultural Heritage

- represents themes of native settlement patterns, fisheries and cultural/spiritual activities
- contains Grey Wolf pictographs and three pre-contact sites

Figure 1 - Regional Context Map

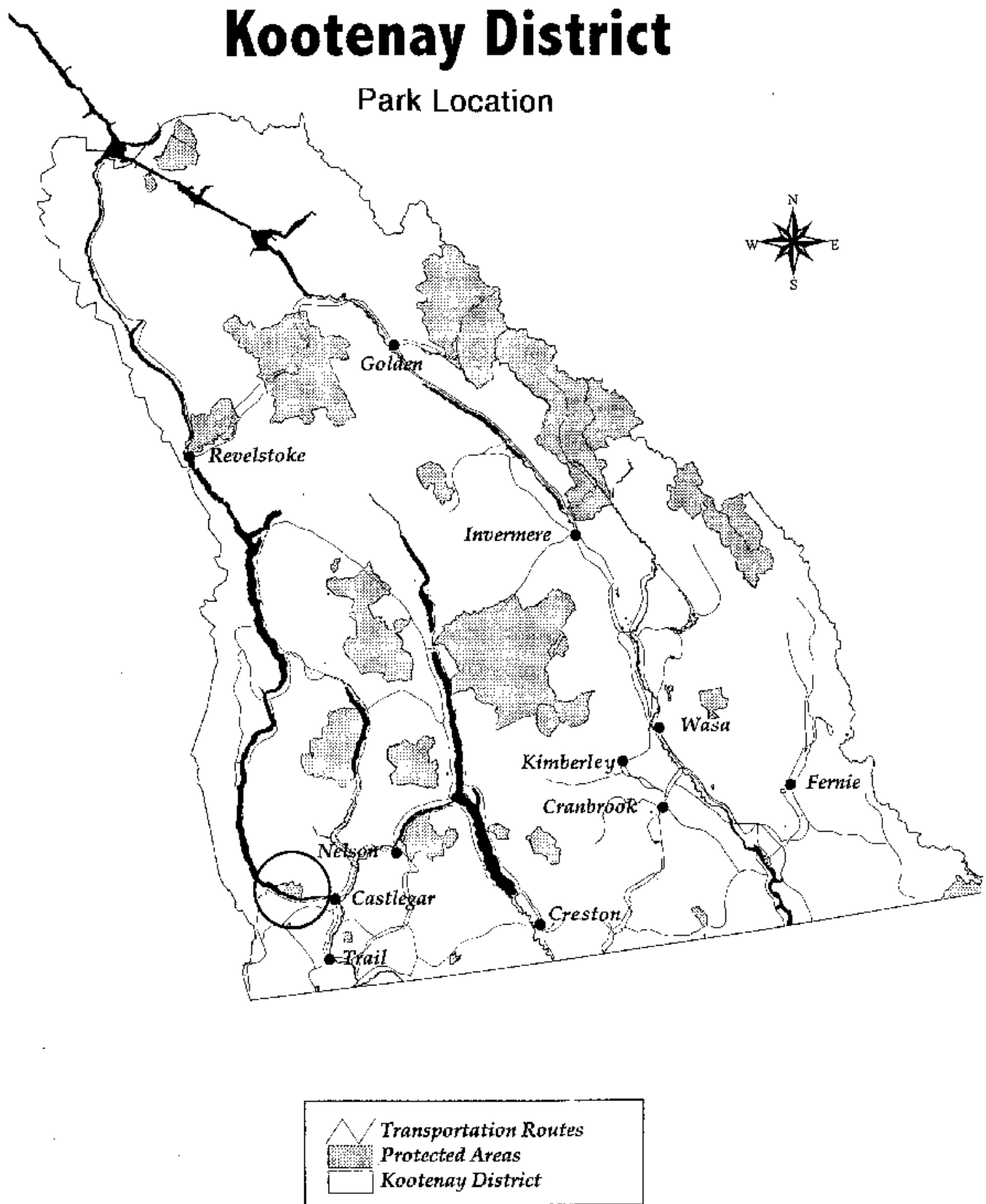
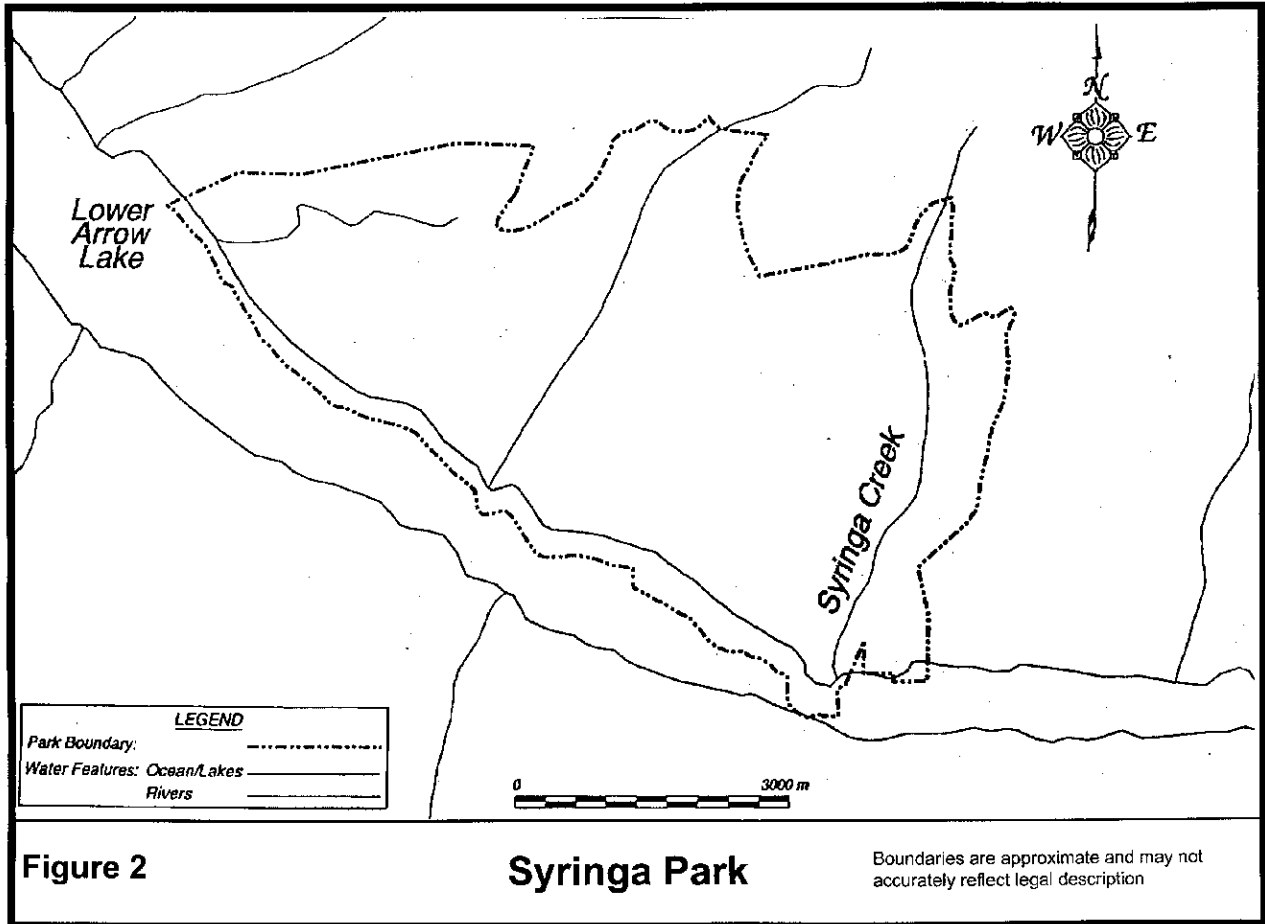


Figure 1

NTS

Figure 2 - Park Reference Map



D. Significance in the Protected Area System

- very high conservation values - important for biodiversity in the Selkirk Foothills Ecosection; provides only representation on IDFun for this part of the province (29% of IDFun in ecosection); protects low-elevation rare and endangered species
- moderate recreation values - all season use
- moderate cultural values - themes of native settlement patterns, fisheries and cultural/spiritual activities

III. Other Land Use, Tenures and Interests

A. Access

- paved road north from Castlegar to Syringa campground, then gravel road to Deer Park
- boat access across Lower Arrow Lake

B. Existing Tenures

- moorage tenure
- campsite - License of Occupation No. 401631
- log dumping and booming - License of Occupation No. 401373
- Deer Creek Forest Service Road - FSR 942-0022-01
- road permit No. R03190
- trapping - License No. RT119044 Territory No. 0415T002
- flood reserve for Arrow Lake Reservoir to 1446 ft contour.

C. Existing Land Use, Activities and Facilities

- 60 site vehicle access, serviced campground and sani-station
- boat launch
- adventure playground
- Tulip Creek Trail

D. Adjacent Patterns of Land Use

- timber harvesting along east and west boundaries
- fluctuating water levels in reservoir

E. First Nation Interests

- two First Nations tribal councils (Ktunaxa/Kinbasket and Shuswap) have included Syringa Park within their asserted traditional territory
- while direct consultation with tribal council representatives on this management direction statement was requested, limitations of time and resources have prevented First Nations from participating
- this management direction statement provides a foundation upon which continued relationships between BC Parks and First Nation tribal councils are based

F. Other Agency Interests

- BC Environment (BCE) - biodiversity objectives; health of wildlife populations; administration of traplines and guide outfitting tenures.
- Ministry of Small Business, Tourism and Culture (STC) - opportunities for viable commercial tourism.
- Ministry of Forests (MOF) - adjacent recreational activities; adjacency issues such as access, visual quality, connectivity

- BC Hydro - managing Lower Arrow Lake for hydro electric

G. Private and Public Stakeholder Interests

- horse users
- hikers
- environmental groups concerned about protected area management
- guide outfitters, hunters, trappers

IV. Management Commitments and Issues

A. Management Direction from Previous Planning

- natural occurrences such as fires, insects and forest diseases will be managed as in other parks through consultation and joint action by BC Parks and Ministry of Forests at the District level
- prescribed burns to maintain the fire-maintained ecosystems (IDFun) will continue for the present time to benefit winter range
- objectives and strategies of the Kootenay and Boundary Land Use Plan Implementation Strategy (KBLUP-IS) Chpt 4

B. Management Issues

- possible squatters at Tulip Creek
- informal camping along road
- knapweed infestation
- infilling of grasslands by trees due to lack of fire disturbance
- forest harvesting adjacent to park
- condition and significance of cultural values unknown

V. Management Strategy

While key strategies or actions are identified, the completion of all these strategies is subject to funding and funding procedures. As such, strategies are ranked according to priority and completed as funding permits. As well, all development within provincial parks is subject to the BC Parks Impact Assessment Policy.

A. Priority Management Objectives and Actions

Objectives

- maintain ecosystem representation of the Selkirk Foothills Southern Columbia Mountains Ecosections including ponderosa pine bunchgrass community
- protect rare and endangered species
- maintain important habitat for Rocky Mountain Bighorn Sheep, deer and elk
- maintain existing recreation opportunities
- manage the area to protect cultural heritage values
- honor commitments in Kootenay Boundary Land Use Plan
- develop relationship with First Nations to enhance understanding and management of park values

Actions

- focus initial management on protecting the resource base, compiling inventory, public information and maintaining existing facilities
- work with BCE to coordinate inventory and management for elk and Bighorn sheep
- develop with MOF and BCE a fire management strategy to address fire hazard, restoration of grasslands and possible winter range enhancement
- work with other agencies to ensure connectivity of wildlife to the park
- undertake measures to address noxious weed (knapweed) problem, in conjunction with MOF
- continue provision of frontcountry camping and beach opportunities
- work with MOF to address access and visual concerns
- work with local First Nations to identify any traditional use in the park and determine management needs
- issue permits for existing tenures as required
- remove illegal campers/squatters from park

B. Consultation and Future Planning

It is currently a low priority in the Kootenay District to develop a long term management plan for this park. When it becomes a higher priority, it would involve consultation with public, First Nations and other agencies to define acceptable uses, use levels and zoning.

C. Zoning Plan

There is insufficient knowledge and understanding about this area to apply the BC Park Zoning Policy. The zoning policy defines in general terms the management direction for a given area of a park, including the type of uses and overall level of use and facilities in relationship to varying degrees of acceptable impacts on park values.

Appendix A

Summary Table of Land and Resource Use Commitments

The following table provides a summary of commitments made through land use processes with regard to acceptable uses, activities, and facilities within this protected area.

Activity/Use/Facility	Acceptable uses
Hunting	M
Fishing	Y
Trapping	N ²
Grazing	N
Rec. Gold Panning/Rock Hounding	N
Utility Corridors	N
Communication. Sites	N
Horse Use/Packing	N
Guide Outfitting-Hunting:	N
- Fishing	M
- Nature Tour	M
- River Raft	N
- Mountain Bike	M
Cat-Assisted Skiing	N
Ski Hills	N
Heli Skiing	N
Heli Hiking	N
Camping (Wilderness)	N
Camping (Serviced)	Y
Tourist Resorts	N
Back Country Huts/Guest Ranch	N
Water Control Structure	N
Fish Stock/Enhance	M
Road Access	Y
Off Road Snowmobile	N
Off Road Motorized	N
Off Road Mechanical	M
Motorized Water Access	Y
Aircraft Access	N
Fire Management:	
- Prevention	Y
- Prescribed Fire	Y
- Suppression	Y
Forest Insect/Disease Control	M
Noxious Weed Control	Y
Exotic Insect/Disease Control	M
Scientific Research (Specimens)	M
Scientific Research (Manipulations)	M

- Y = allowed subject to conditions identified in management direction statement or management plan
M = may be permitted if compatible with protected area objectives
N = not allowed
N¹ = allowed for expressed management purposes only
N² = present and allowed to continue but not normally allowed