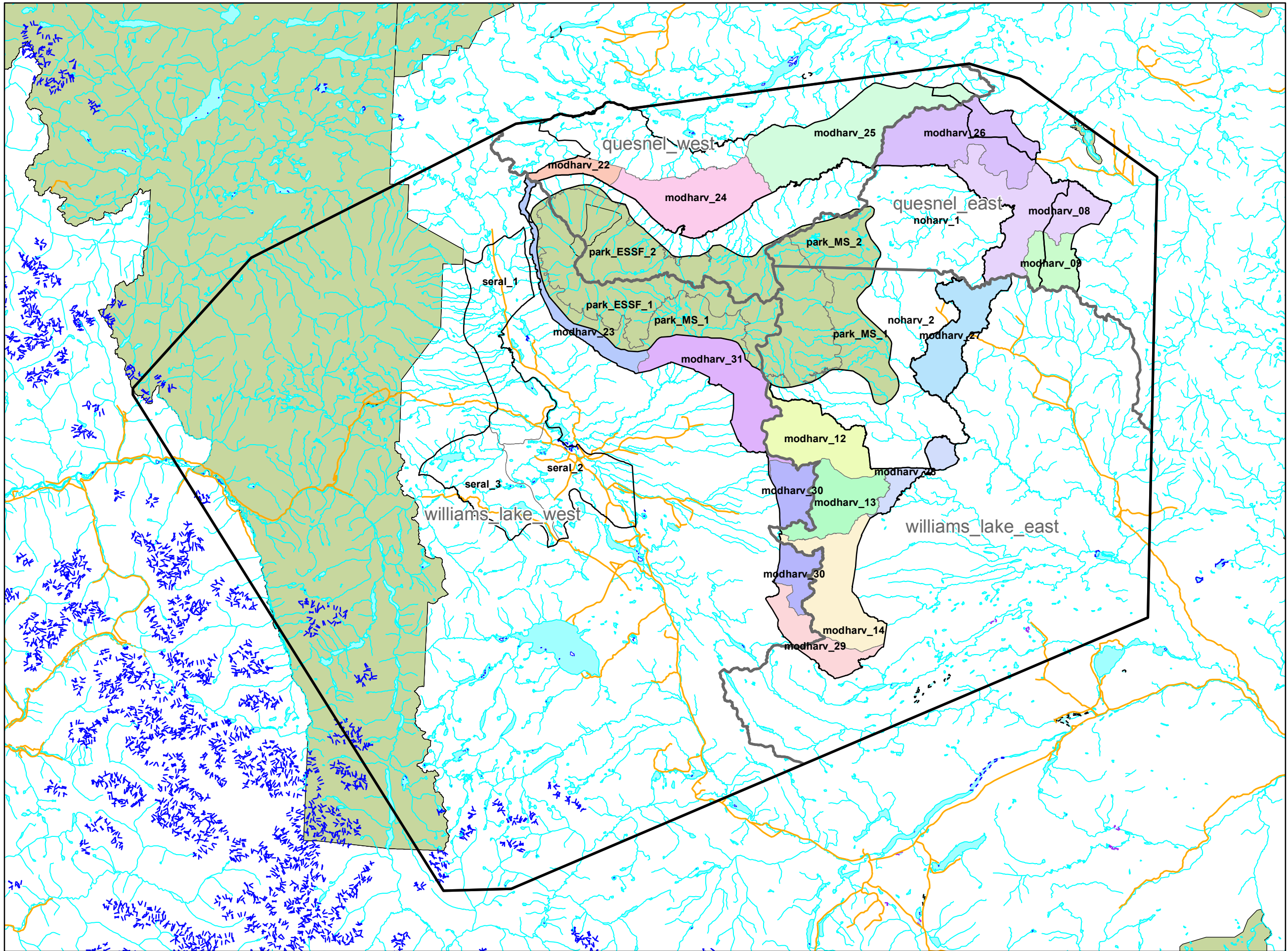


Map 09

Sub-Units of the Caribou Modified Harvest Zone to which the 80:20 Terrestrial/Arboreal Objectives Apply (April 2011)



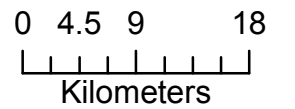
- Itcha-Ilgachuz Caribou Habitat Area
- Caribou Quadrant Boundary
- Road (Non-Forest Service)
- Parks and Protected Areas

ALLOCATING ARBOREAL VS TERRESTRIAL LICHEN SITES

\* 20% of the non-reserved area of each uniquely coloured polygon should be managed with the arboreal lichen prescription; the remainder with the terrestrial lichen prescription.

\* In addition to this map, follow the guidance in section 5.4 for allocation of arboreal and terrestrial sites

Scale 1:600,000



Produced by CB  
Ministry of Forests, Lands, and  
Natural Resource Operations  
Williams Lake, British Columbia

Date: May 4, 2011  
Projection: UTM Zone 10, NAD 83  
Project: wl\_08\_0207\_northern\_caribou  
MXD: map09\_subunits.mxd  
Historic Project #p9805038