

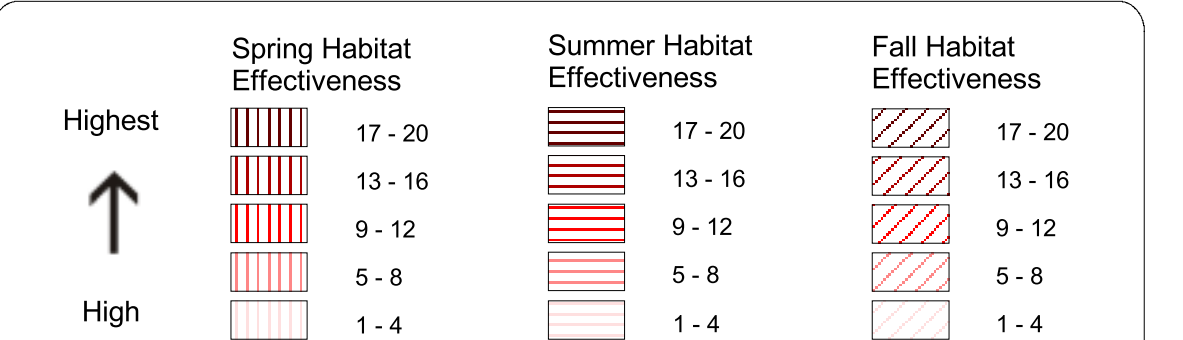
Quesnel Highlands Grizzly Bear Habitat Assessment: High Value Habitat

093A067

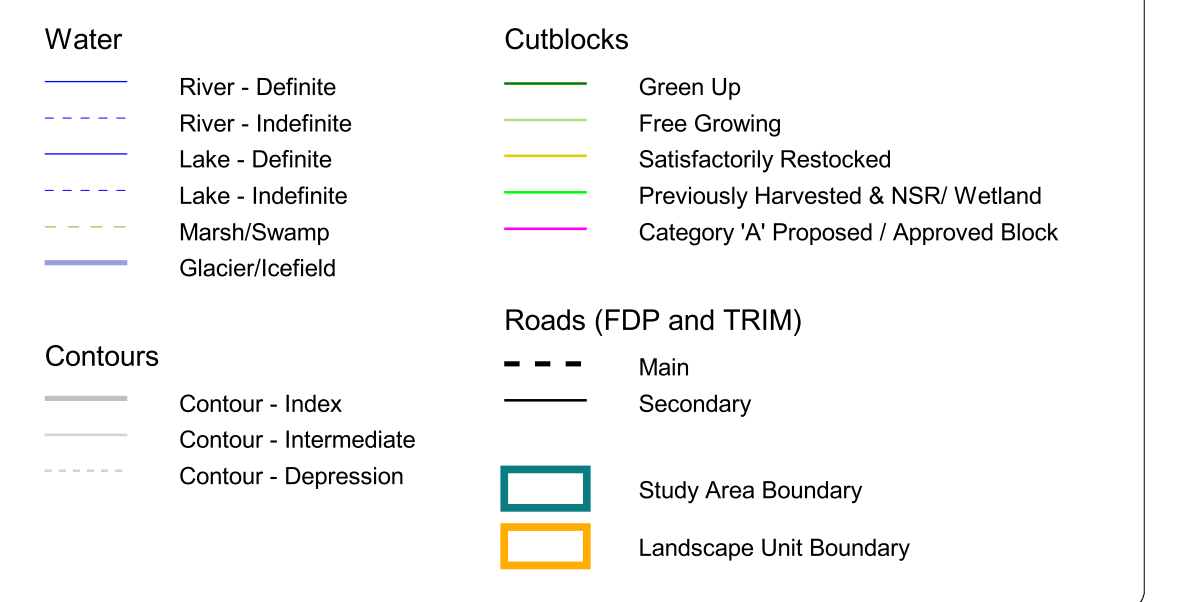


Scale 1:20,000
BC Albers Projection (NAD83)

Contour Interval = 20m

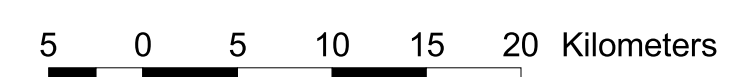
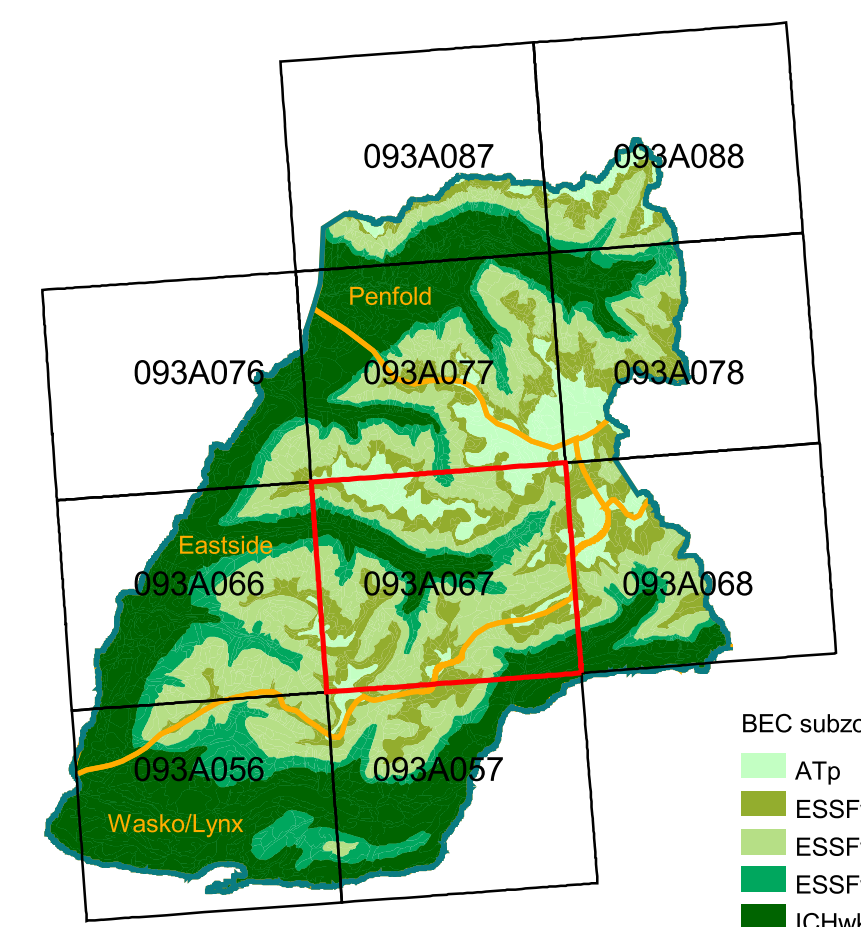


Seasonal habitat effectiveness is determined for each polygon by calculating the sum of the product of modified rank value and the decile proportion of all composite ecosystem units. Modified rank value incorporates the initial ecosystem unit rating plus impacts from sockeye, travel corridors, and linkage areas, roads and camps. The calculation of seasonal habitat effectiveness uses only those ecosystem units with modified ranks of 1 or 2. Variation in polygon value is due to differences in the amount (1-10 decile proportion) and value (1 or 2 modified rank) of composite ecosystem units. High habitat effectiveness values reflect high grizzly bear habitat values. All delineated polygons are considered high value to grizzly bears. Overlapping seasonal grizzly bear habitat values are displayed through the use of different cross-hatching patterns.



Quesnel Highlands Project Area

1:400,000



DIGITAL DATA SOURCES AND DISCLAIMERS

Habitat Effectiveness mapped at 1:20 000 based on 1:50 000 Terrestrial Ecosystem Mapping.

Terrestrial Ecosystem Mapping provided by Geowest Environmental Consulting Ltd. at 1:50 000.

Forest Development Plan database (2001) provided by West Fraser Mills Ltd. at 1:20 000.

TRIM data compiled by B.C. Ministry of Environment, Lands and Parks (MELP) at 1:20,000. Provided with MELP authorization.

Map Prepared for:
West Fraser Mills Ltd.
B.C. Ministry of Environment, Lands & Parks

Created from:
tem_gb_final

Map Compiled By:
Applied Ecosystem Management Ltd.
<http://www.AEMLtd.ca>
April 19, 2002

