

## Instructions for Accessing the CDC Occurrence Data via WMS

The CDC Web Mapping Service (WMS) can be accessed using any GIS software that supports web mapping services. GIS packages such as ESRI ArcMap 9 +, Microstation, GAIA, JUMP, uDig and CoinPacific all support WMS. Many GIS software packages are available for free download from the internet.

The CDC WMS can be accessed through the BC Natural Resource Information Centre (<http://openmaps.gov.bc.ca/>) or the Geoconnections Discovery Portal at (<http://geodiscover.cgdi.ca/gdp/>), along with a complete list of available Web Map Services.

Additional sources of information regarding WMS are available at:

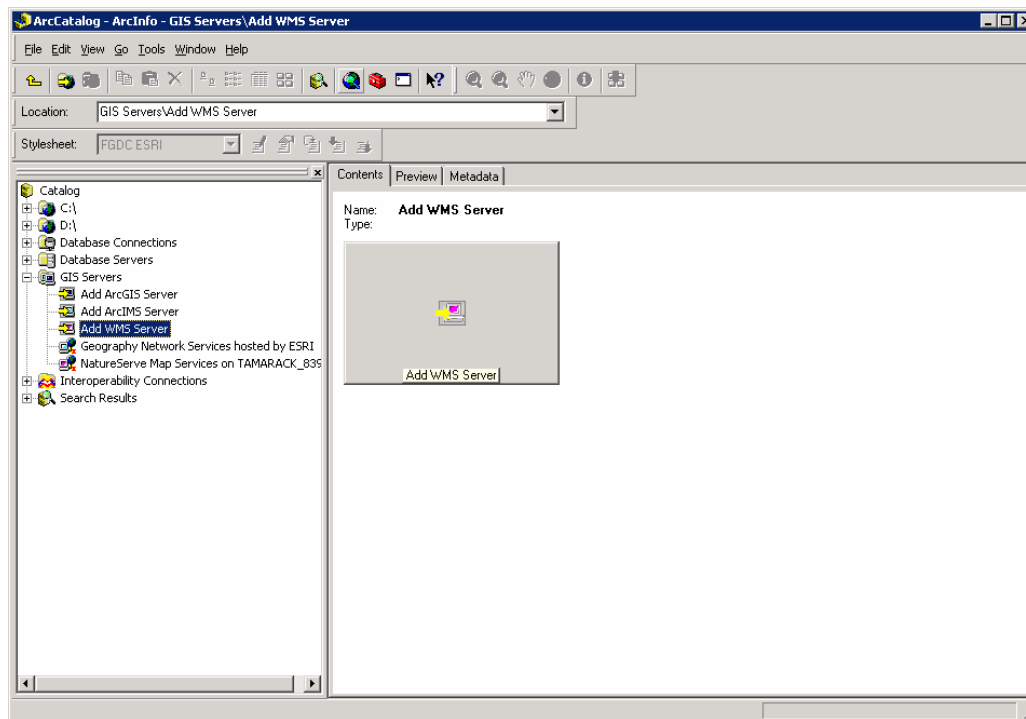
<http://ilmbwww.gov.bc.ca/dm/wms/>

[http://ilmbwww.gov.bc.ca/dm/wms/arcmap\\_connect.html](http://ilmbwww.gov.bc.ca/dm/wms/arcmap_connect.html)

---

### o Instructions for displaying WMS using ArcMap (version 9.1+)

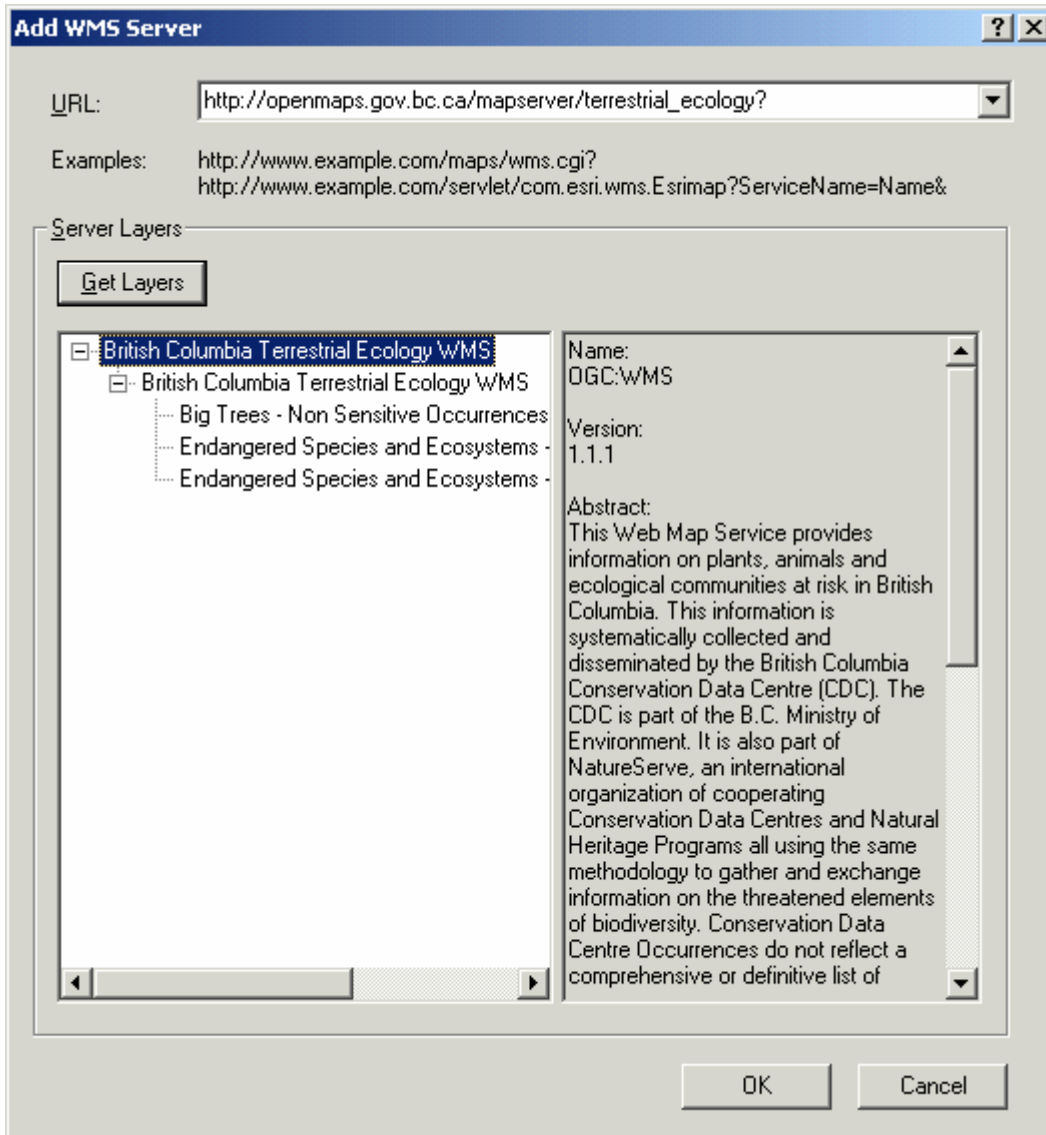
#### 1. Start ArcCatalog



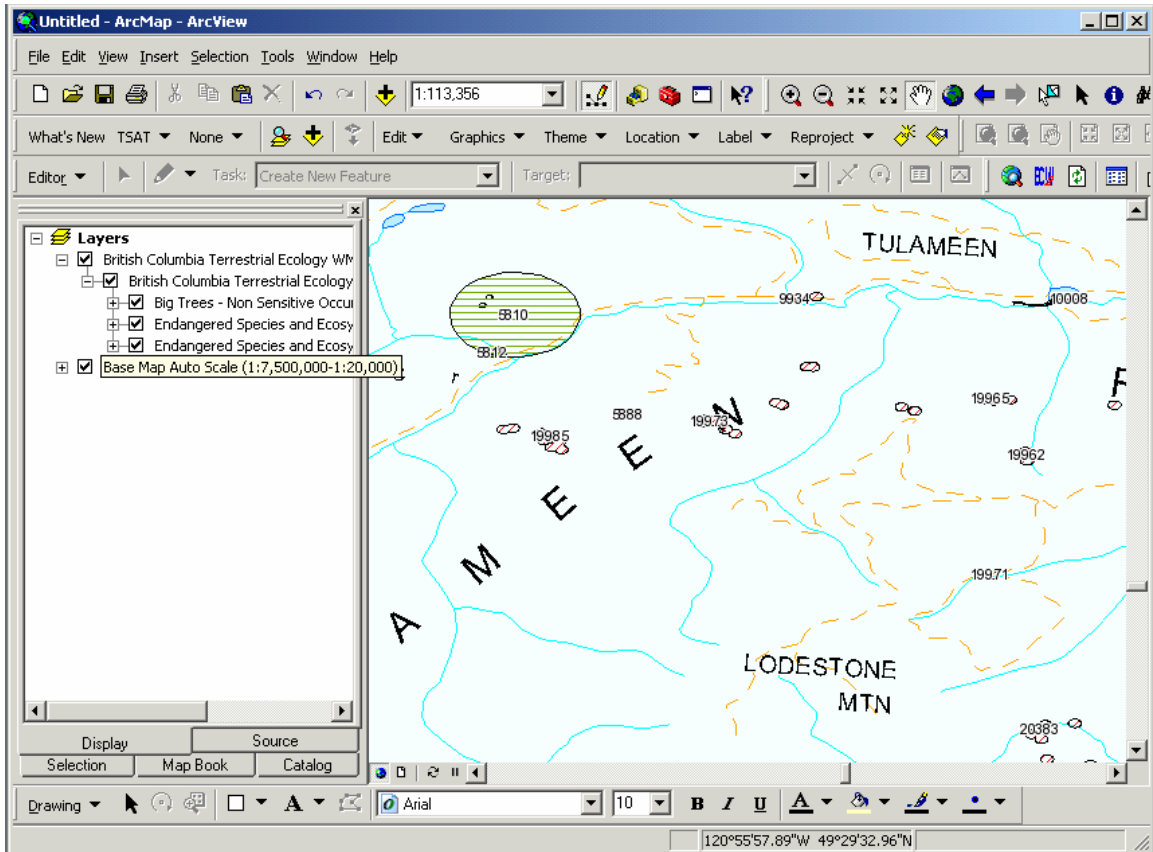
#### 2. Click on GIS Servers -> Add WMS Server.

#### 3. Input the link below in the Add WMS Server screen below and click “Get Layers”

[http://openmaps.gov.bc.ca/mapserver/terrestrial\\_ecology?](http://openmaps.gov.bc.ca/mapserver/terrestrial_ecology?)



4. Click OK. The service is now added.



5. Load the service you created using ArcMap and you can view the CDC occurrence data.