

# ***BC Soils Information Overview and Interactive Session***

DEEPA SPAETH FILATOW, P.Geo

Provincial Bioterrain Specialist

MOE Knowledge Management Branch

# OUTLINE

- INTRO
- ACCESS TO DATA
  - SCANNED MAPS
  - REPORTS
  - GIS POLYGON DATA
  - GIS POINT DATA
- ADDING KNOWLEDGE TO DATA
- SUBMITTING DATA
- GETTING HELP
- DISCUSSION – YOUR INFORMATION NEEDS

# ***BC Soils Information Overview and Interactive Session***

- An overview of BC soil survey information including scanned maps, GIS data, reports and field data.
- Access to these resources and status of data improvement projects.
- Interactive session on soils information needs and acquisition of soils data/info/knowledge into the provincial holdings with a focus on the needs of cumulative effects analysis.

# INTRO

Ecosystem Information Section  
Terrestrial Ecosystem Information (TEI)

# The TEI Team



**Deepa  
Filatow**

Provincial  
Bioterrain  
Specialist



**Maija  
Finvers**

Terrain  
Information  
Specialist



**Tony  
Button**

A/Wildlife  
Information  
Specialist



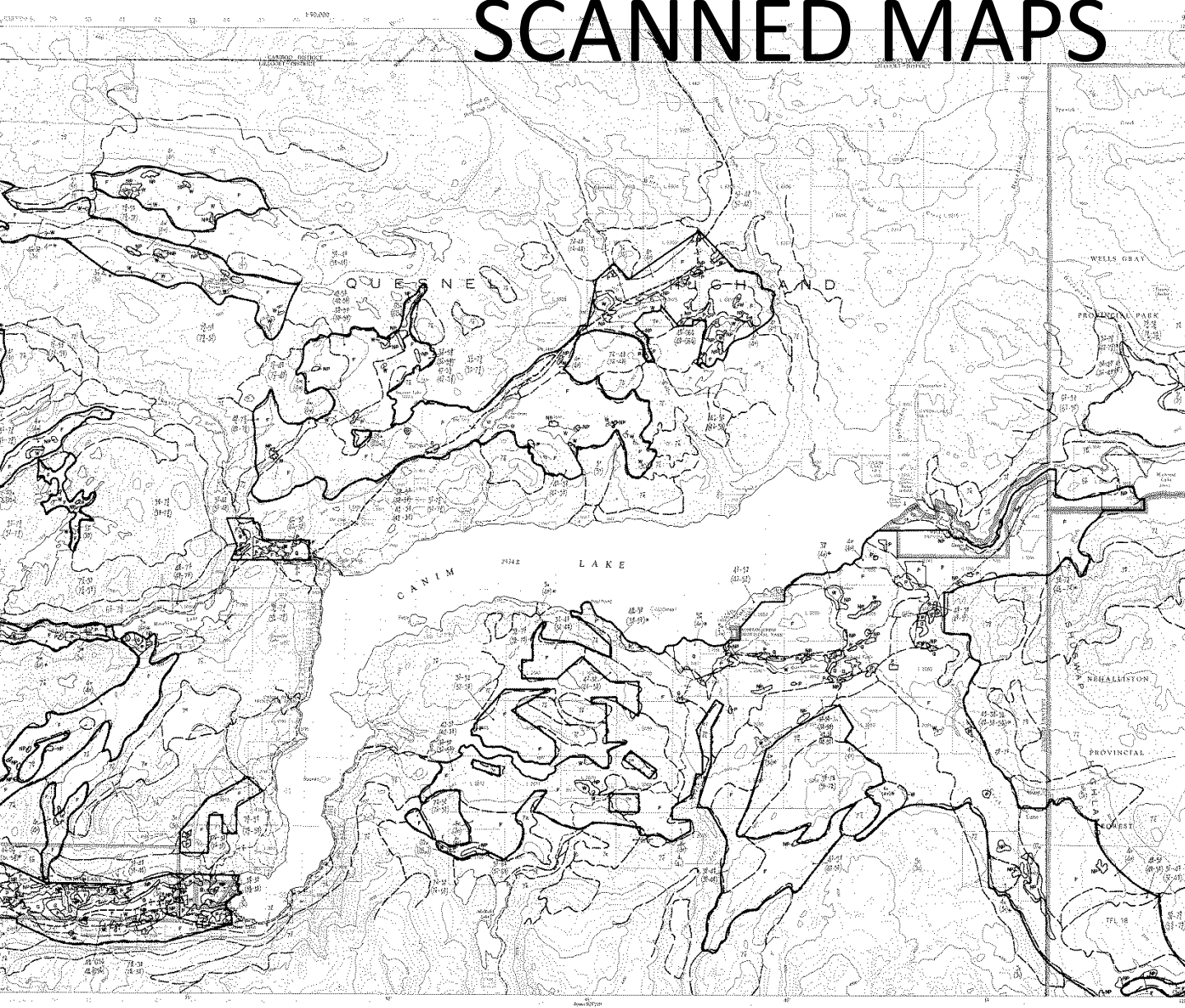
**Corey  
Erwin**

Vegetation  
Ecologist

# Discussion – your data use

- What information do you currently use? In what format? (maps, point data, GIS maps)
- Do you use GIS software?
- What do you want to get out of this talk?

# SCANNED MAPS



## AGRICULTURAL LAND RESERVES AGRICULTURAL CAPABILITY AND LAND USE

### LEGEND

**LAND USE**

H	Horticulture
G	Forage and grains
P	Grassland and pasture
F	Forest
NP	Non-productive lands
W	Water

### B.C.L.L. LAND CAPABILITY CLASS FOR AGRICULTURE

1-4	Dryland rating
4-5	Irrigated rating
6-7	Drained rating

- \* Indicates capability rating used
- 1-4\* indicates B.C.L.L. capability rating revised and revised rating
- \*\* indicates improved rating used on presently cultivated areas only
- \*% indicates percentage of land polygon using rating

NOTE: For additional information refer to Select Standing Committee on Agriculture, Phase I Research Report: Inventory of Agricultural Land Reserves in British Columbia.

### BOUNDARIES

—	Agricultural Land Reserve
—	B.C.L.L. land capability for agriculture
—	Land use
—	Reserves and parks
—	Agriculture Reporting Region
—	Regional District

### Relevant Dates

Photography : BC 1976  
Map released : July 1979  
A.L.R. revised: May 1978

### AREA SUMMARY

LAND USE	B.C.L.L. LAND CAPABILITY CLASSES (hectares)							TOTAL
	1	2	3	4	5	6	7	
H	0	0	24	0	2	0	0	26
G	0	0	124	177	64	0	0	365
P	0	0	161	262	98	24	11	556
F	0	0	2286	11965	2335	56	496	17436
NP	0	0	149	248	169	4	33	603
<b>TOTAL</b>	<b>0</b>	<b>0</b>	<b>3044</b>	<b>12652</b>	<b>2664</b>	<b>84</b>	<b>540</b>	<b>18986</b>
W								437

### SELECT STANDING COMMITTEE ON AGRICULTURE

Prepared by  
TALISMAN PRODUCTS INC.  
Cooperation with  
RESOURCE ANALYSIS BRANCH

# Finding Scanned Maps

1. Go to the file  
TEI\_Scanned\_Map\_Index\_Jan2012.xlsx

IDIR users

[\\slkbmg\imagery\scanned\\_maps\moe\\_terrain\\_maps\Scanned T maps all](\\slkbmg\imagery\scanned_maps\moe_terrain_maps\Scanned_T_maps_all)

External users

[http://www.env.gov.bc.ca/esd/distdata/ecosystems/TEI\\_Scanned\\_Maps/](http://www.env.gov.bc.ca/esd/distdata/ecosystems/TEI_Scanned_Maps/)

2. Sort the list to narrow your search
3. Click on the link in the IDIR\_IMAGE\_URL or EX\_IMAGE\_URL field to open folder. Copy to a local drive or double click on the TIFF.



# SCANNED MAPS GIS BOUNDARIES

Victoria Desktop - ArcGIS 10 - Citrix XenApp Plugins for Hosted Apps

The screenshot shows the ArcMap interface with a map of British Columbia, Canada, overlaid with a grid. The Identify window is open, displaying metadata for a selected feature. The map shows various cities and regions, including Yukon Territory, Northwest Territories, Alberta, Saskatchewan, and parts of Washington, Idaho, and Montana. The Identify window shows the following metadata:

Identify from: <Top-most layer>

- Scanned\_Map\_Bndry\_SP\_ALL\_2011\_04\_13
  - K01-149
  - M01-3731
  - M01-3733
  - M01-4951
  - M01-75
  - M01-76
  - M01-77
  - M01-78
  - M01-79
  - M01-80

Location: 593,438.806 1,621,650.359 Meters

Field	Value
OBJECTID	1573
SHAPE	Polygon
IMAGE_BDY_ID	1573
FILE_NAME	K01-149
LOC_NBR	K01
FILE_NBR	149
IMAGE_TYPE	TIF
MAPSH_NBR	82
MAPSH_PART	
MAPSH_LIST	
PROJ_NAME	Soil - Related Theme
MAP_NAME	Soil Sensitivity To Acid Precipitation
MAP_SCALE	2000000
MAP_DATE	1988
PRJ_REPORT	
PROJECT	
TERRAIN	
SOILS	
ECOSYSTEMS	
TERRAIN_OR_SOILS_RELATED	Y
IMAGE_COM	
IMAGE_URL	\\slkimg\imagery\scanned_maps\moe_terrain_maps\Scanned_T_maps_all\K01
ECOCAT_COM	Please email Soilterrain@Victoria1.gov.bc.ca to request maps by file name (e.g. C07-1234)
ECOCAT_URL	mailto:Soilterrain@Victoria1.gov.bc.ca?subject=Scanned%20Map%20Request
REF_1_COM	<null>
REF_1_URL	<null>
REF_2_COM	<null>
REF_2_URL	<null>
REF_3_COM	<null>
REF_3_URL	<null>
REF_4_COM	<null>
REF_4_URL	<null>
REF_5_COM	<null>
REF_5_URL	<null>
REF_6_COM	<null>
REF_6_URL	<null>
REF_7_COM	<null>
REF_7_URL	<null>

Identified 11 features

Table



# SCANNED MAPS IN iMAPBC

iMapBC - Windows Internet Explorer  
http://webmaps.gov.bc.ca/imfx/imf.jsp?site=imapbc

File Edit View Favorites Tools Help

BRITISH COLUMBIA iMapBC

Take me to: Address  Go Close X Help ?

About Layers Themes Legend Toolsets Find Location Reports Refresh Map Settings Tutorial

Scale: 1:3,302,821 90 Map Tool: iMap BC Identify


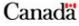
BC Albers: 1524718, 1196180 -- UTM11: 458317, 6148829 -- Geographic: 117°39' W, 55°29' N


Local intranet | Protected Mode: On 100%

# LINKS TO FEDERAL REPORTS

cansis publications bc bc8 - Windows Internet Explorer  
http://sis.agr.gc.ca/cansis/publications/bc/bc8/intro.html

File Edit View Favorites Tools Help  
Page Tools

 Agriculture and Agri-Food Canada Agriculture et Agroalimentaire Canada 

  
Agriculture and Agri-Food Canada  
www.agr.gc.ca

[Français](#) | [Home](#) | [Contact Us](#) | [Help](#) | [Search](#) | [canada.gc.ca](#)

[Home](#) > [CansIS](#) > [Publications](#) > [Soil survey - British Columbia](#) > [BC8 - SOIL SURVEY OF THE PEACE RIVER AREA IN BRITISH COLUMBIA](#)

Reports require a PDF Reader (i.e. Adobe Acrobat). Find out [more](#).

**SOIL SURVEY**

of the

**PEACE RIVER AREA IN BRITISH COLUMBIA**

L. FARSTAD, T. M. LORD, A. J. GREEN  
and  
H. J. HORTIE  
Canada Department of Agriculture  
Research Station, Vancouver, B.C.

*Report No. 8*  
of the  
*British Columbia Soil Survey*

University of British Columbia  
British Columbia Department of Agriculture  
and  
Research Branch, Canada Department of Agriculture  
1965

**Accompanying Maps**

- [MAP NORTH](#)
- [MAP SOUTH](#)

Internet | Protected Mode: On 100%

# FINDING PUBLISHED REPORTS

1. Go to this website

<http://sis.agr.gc.ca/cansis/publications/surveys/bc/index.html>


2. Press CNTRL + F and type in a key word

3. Follow the links to get to the published report and associated maps.

4. Also available here if you know the report number

[http://www.env.gov.bc.ca/esd/distdata/ecosystems/Soils\\_Reports/scanned\\_BC\\_reports\\_2003/](http://www.env.gov.bc.ca/esd/distdata/ecosystems/Soils_Reports/scanned_BC_reports_2003/)

# Reports in the Provincial Holdings



All B.C. Government
  Ministry of Environment

[Main Index](#)
[Help](#)
[Contact Us](#)


**Search**

Go

Text Size

---

[B.C. Home](#)
[Ministry of Environment](#)
[CLIR](#)
[Search Results](#)



## CLIR

### Cross-linked Information Resources

#### Search Results

Displaying 2 results for: soil survey peace from BCSEE (0 of 0), EIRS - BDP (1 of 1), EcoCat (0 of 0), EIRS - EPD (0 of 0), MoFR Library (1 of 1), SIWE (0 of 0)

*Note: Some publications with large file sizes have been broken into subdocuments to allow faster downloading. Subdocuments are also used to attach relevant files with different file formats. The presence of subdocuments will be shown by [multiple] following the title.*

If results are not as expected, please see [Search Tips](#) for assistance.

**Warning:** Some records were not returned due to errors: [details](#)

To copy the URL to the clipboard (if digital version is available), right click on the Title.

Title ⬆️ ⬆️	Primary Author ⬆️ ⬆️	Year Published ⬆️ ⬆️	Details	e-Library ⬆️ ⬆️	Request Hardcopy?
Soil survey of the Peace River area in British Columbia /		1965	✔️	MoFR Library	✔️
<b>Contributing Authors:</b> Farstad, L., Canada., British Columbia., University of British Columbia.		<b>Publisher Name:</b> Queen's Printer,			
<b>English Species Name:</b>		<b>Scientific Species Name:</b>			
<b>Identifiers:</b> 631.47712 S683 1965					
<b>Abstract:</b>					
<a href="#">Soils of the Fort St. John-Dawson Creek Area, British Columbia</a> [multiple]	Lord, T. M.	1986	✔️	EIRS - BDP	

To copy the URL to the clipboard (if digital version is available), right click on the Title.

---

COPYRIGHT
DISCLAIMER
PRIVACY
ACCESSIBILITY

**B.C. Home**

**Ministry of Environment**

**CLIR Home**

- [Basic Search](#)
- [Advanced Search](#)
- [Download Adobe Acrobat](#)

**Tools**

- [Search Tips](#)
- [Glossary](#)
- [CLIR Help Guide](#)
- [Feedback](#)
- [About CLIR](#)
- [Contact Us](#)

**Related Links**

- [BCSEE](#)
- [EcoCat](#)
- [EIRS - Biodiversity](#)
- [EIRS - Environmental Protection](#)
- [Ministry Library](#)
- [SIWE](#)

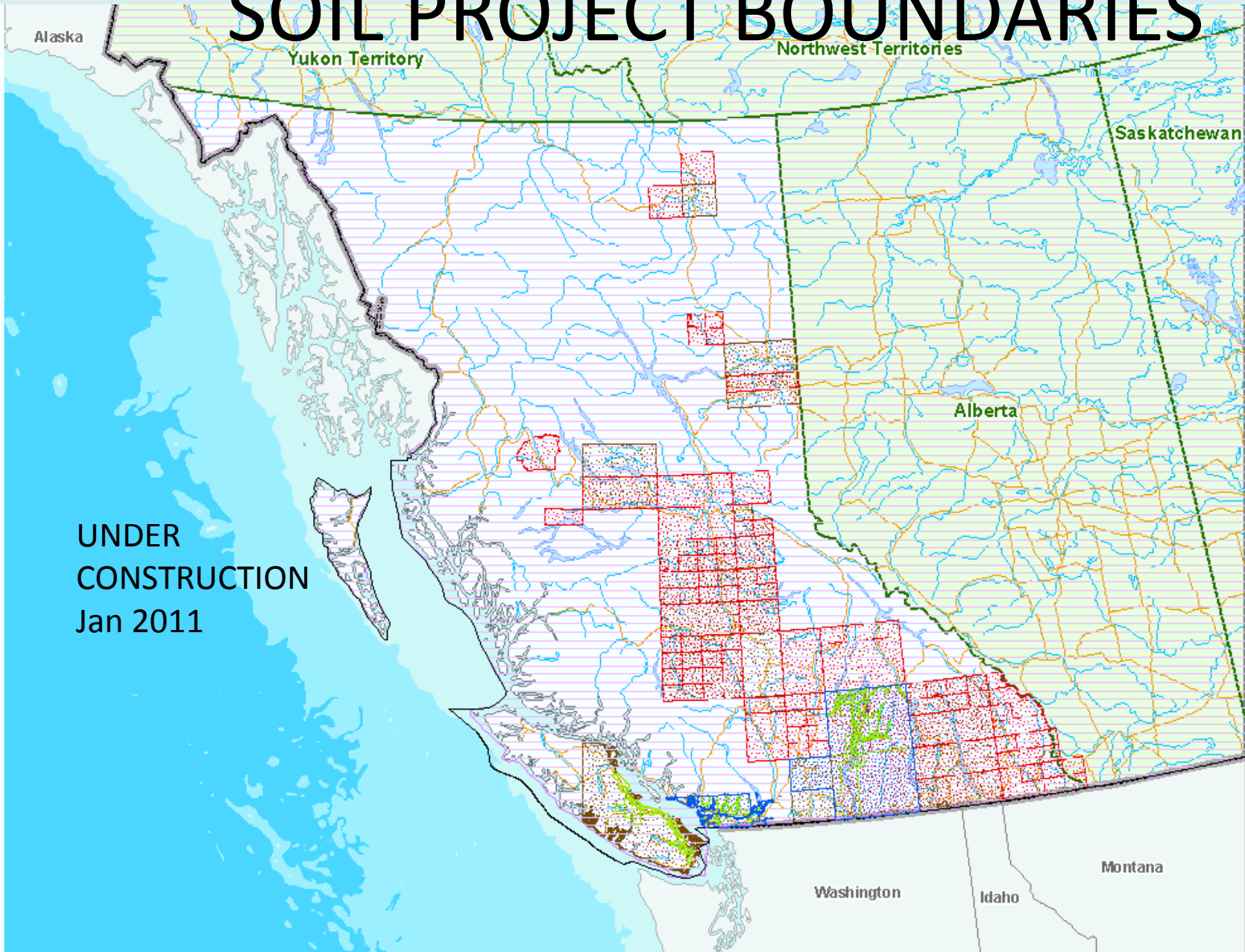
Exit this e-service

# SOILS GIS Data Sources

- Geographic Information System (GIS) data are points, polygon or lines that have associated soils attributes.
- These datasets can be obtained by request to [soilterrain@victoria1.gov.bc.ca](mailto:soilterrain@victoria1.gov.bc.ca)
- These datasets are actively being worked to enable publication to a centralized freely available self serve location.



# SOIL PROJECT BOUNDARIES



UNDER  
CONSTRUCTION  
Jan 2011

Alaska

Yukon Territory

Northwest Territories

Saskatchewan

Alberta

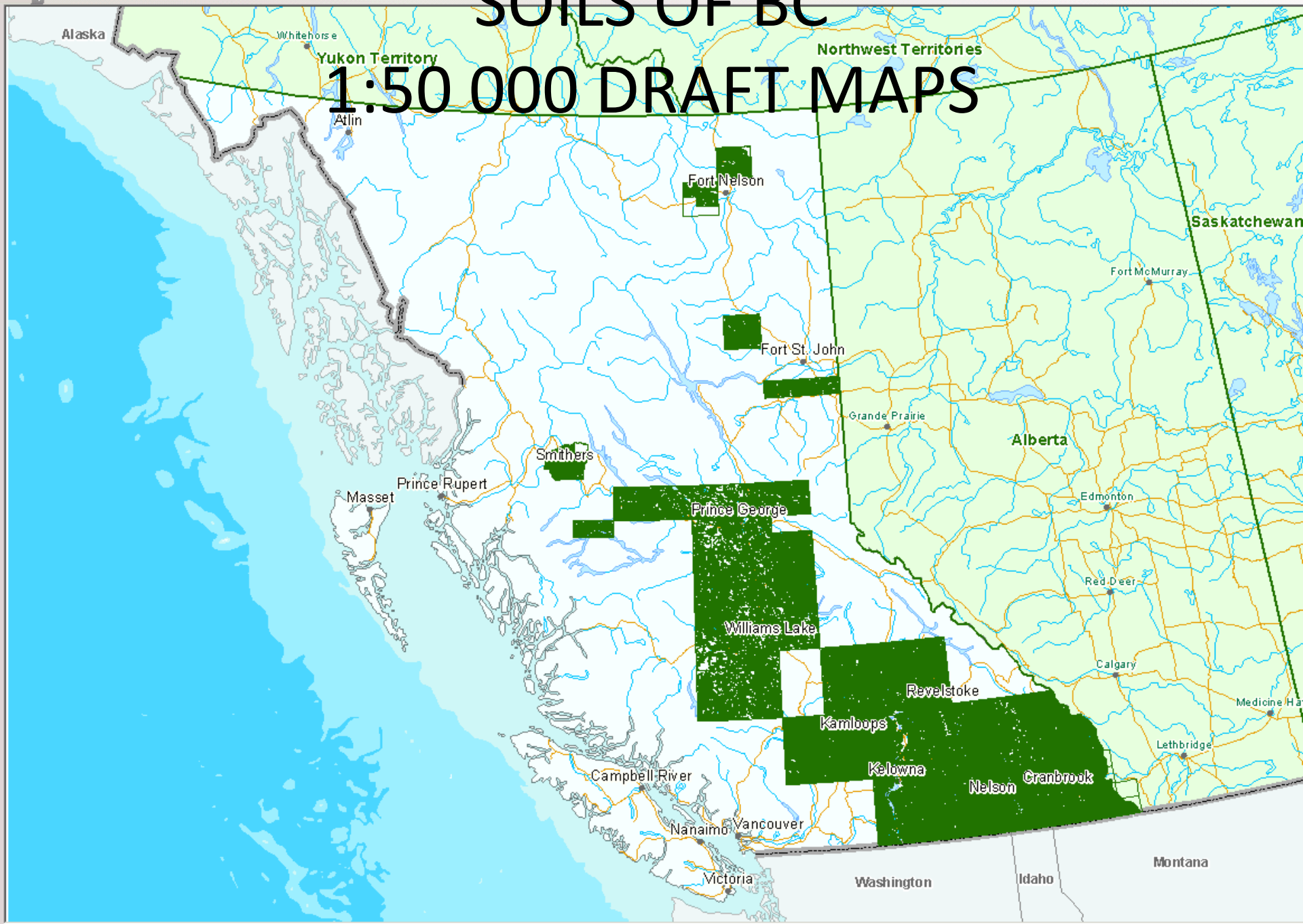
Washington

Idaho

Montana

# SOILS OF BC

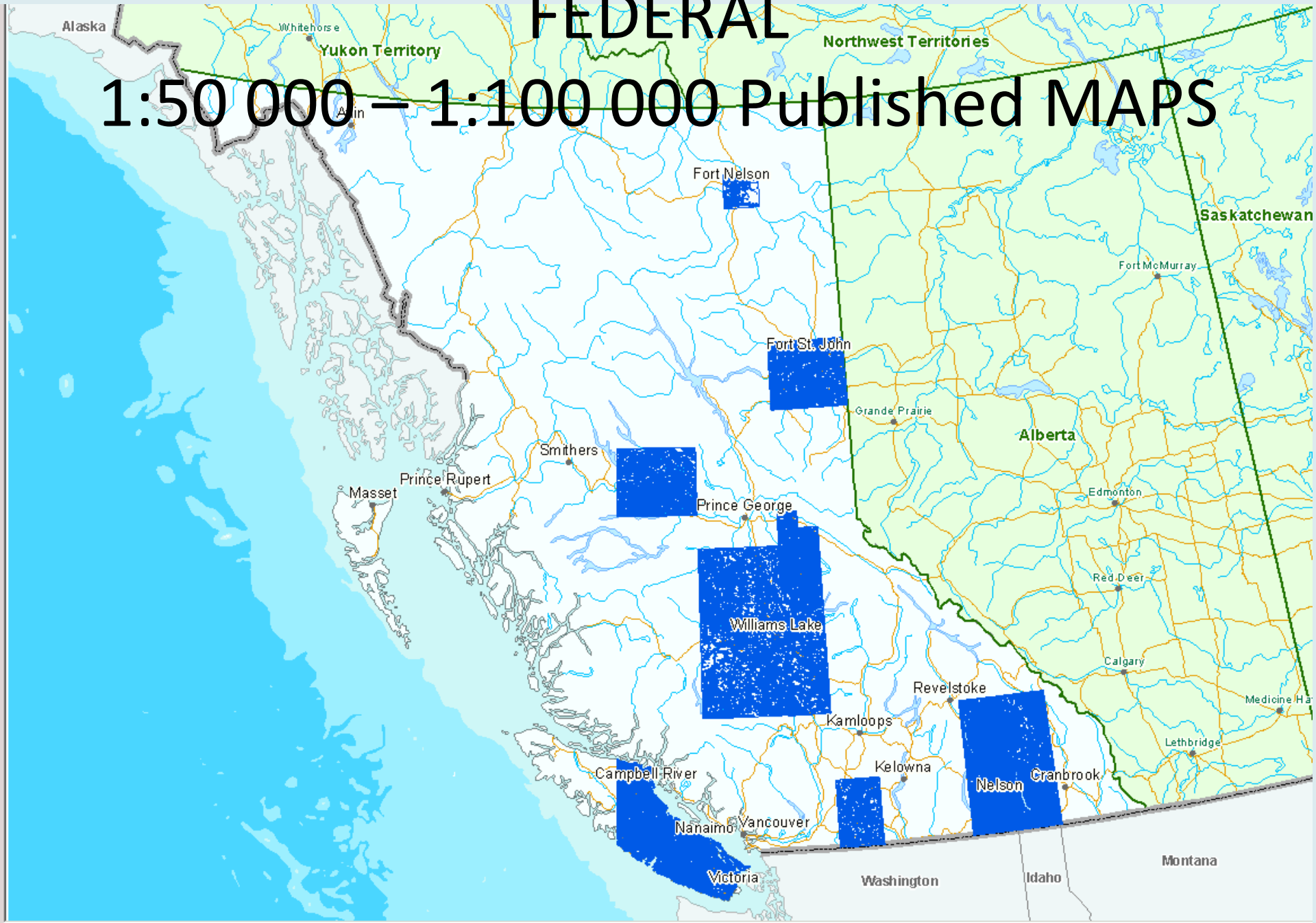
## 1:50 000 DRAFT MAPS





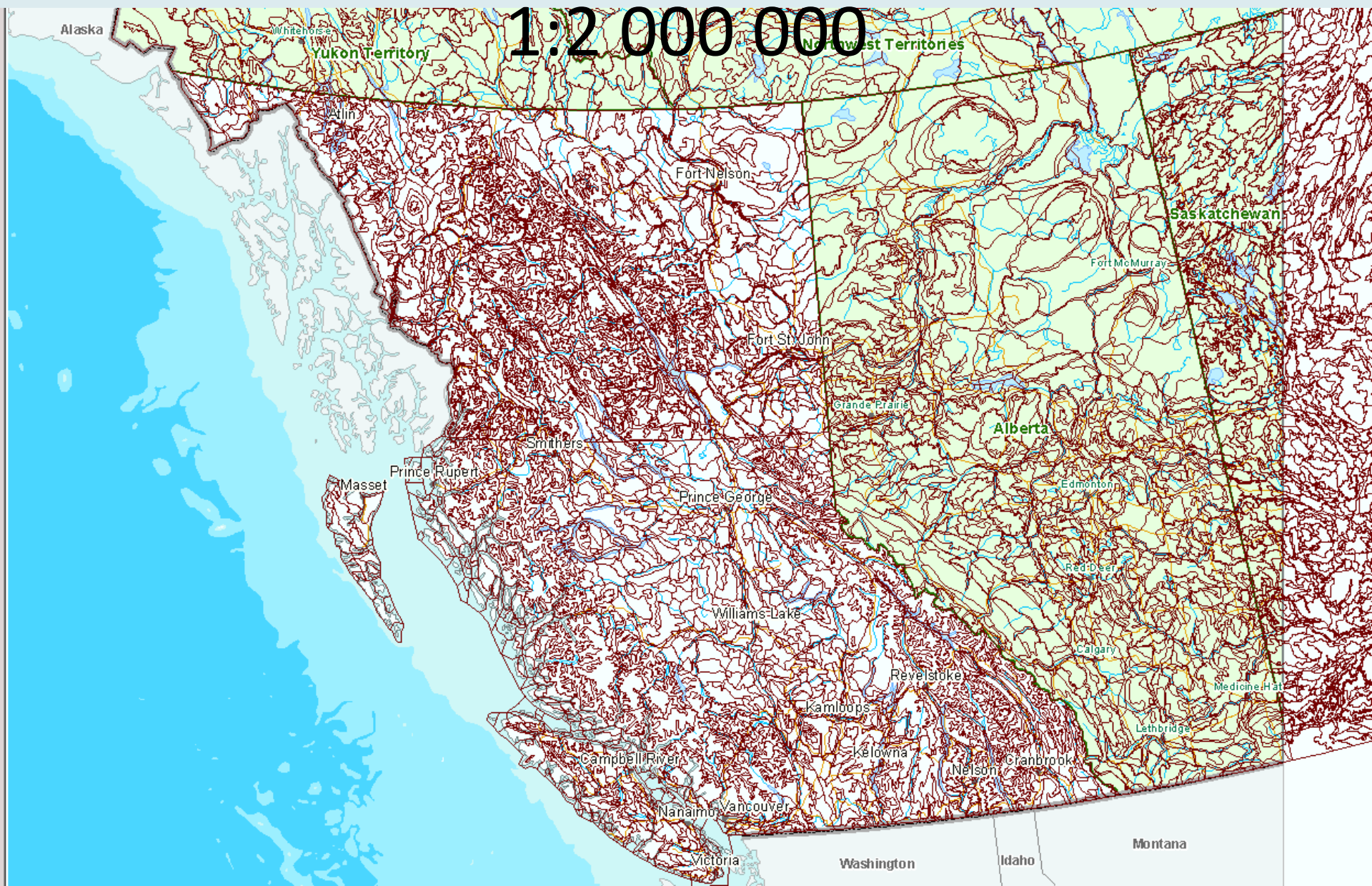
# FEDERAL

# 1:50 000 – 1:100 000 Published MAPS



# SOIL LANDSCAPES OF CANADA

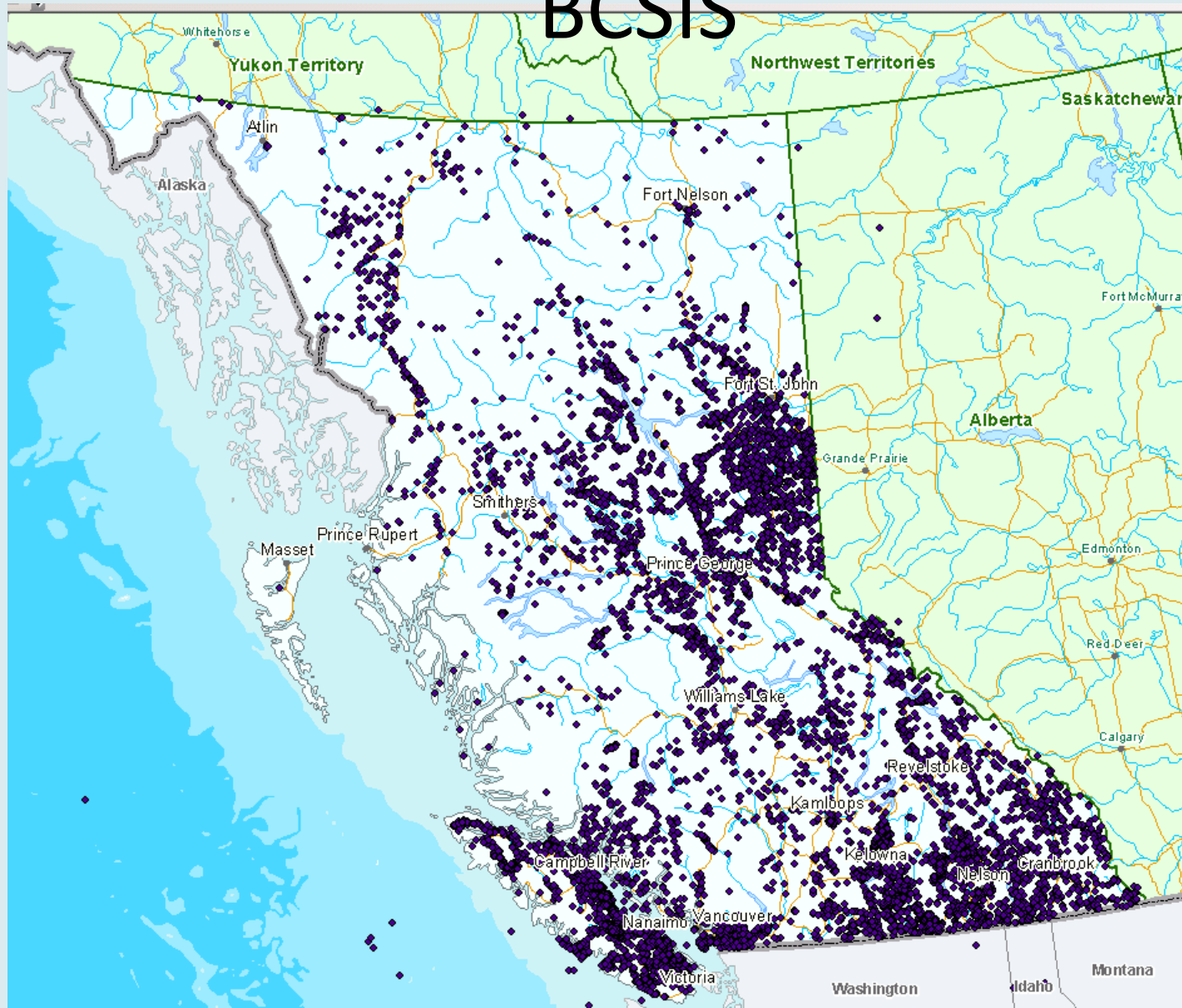
1:2 000 000





# BC SOILS POINT DATA

## BCSIS



# HABC

The screenshot shows the Hectares BC website homepage. At the top is a navigation menu with links: Welcome, Show Me Where ..., How Much ..., Raster Data, Themes ..., My HaBC, Help, and Contact Us. On the right side of the menu, there is a 'Login Hectares BC' link and a help icon. The main content area features a large green graphic of three overlapping squares with a white square in the center, and the text 'Welcome to Hectares | BC'. A small 'Hectares BC' tooltip is visible over the graphic. To the right, there are sections for 'Hints', 'Recent Updates', and 'more\_'. The 'Hints' section provides browser recommendations and search instructions. The 'Recent Updates' section lists updates from December 2011, November 2011, September 2011, and August 2011. The footer contains logos for British Columbia, BioDiversity BC, Nature Conservancy Canada, Fraser Salmon & Watersheds Program, GeoConnections, Fisheries and Oceans Canada, and Parks Canada.

Welcome to

Hectares | BC

Hints

Users are encouraged to use Firefox, Chrome or Safari web browsers. Hectares BC performs slower with Internet Explorer, particularly when expanding large Data Layer lists like landscape units.

Use the Keyword Search box (top right) to find Data Layers directly without having to expand long lists.

Recent Updates

**Dec 08, 2011**

- Updated Mountain Pine Beetle Layers, added years 2007 - 2010
- Updated National Parks

**November 24, 2011**

- Fixed 'Show Me Where...' parsing error.

**September 27, 2011**

- Updated Parks and Protected Areas

**August 4, 2011**

- Updated Community Watersheds and Treaty Lands

[more\\_](#)

BRITISH COLUMBIA  
The Best Place on Earth

BioDiversity BC  
CONSERVING THE VARIETY OF LIFE

NATURE CONSERVANCY CANADA

Fraser Salmon & Watersheds Program

GeoConnections  
GéoConnexions  
Canada

Fisheries and Oceans Canada / Pêches et Océans Canada

Parks Canada / Parcs Canada

[Hectares BC Wiki](#)

# Adding Data to the Collection

Have maps or data not found in the provincial or federal data holdings? Contact the data managers at [soilterrain@victoria1.gov.bc.ca](mailto:soilterrain@victoria1.gov.bc.ca)

Scanned Maps

Reports

Plot data

GIS data

# Getting Help

- Send soils related data request to [soilterrain@victoria1.gov.bc.ca](mailto:soilterrain@victoria1.gov.bc.ca)

- My contact info

[Deepa.filatow@gov.bc.ca](mailto:Deepa.filatow@gov.bc.ca)

101-1690 Powick, Kelowna, BC

250-861-7675

# Discussion – your INFORMATION needs

- Are you more interested in raw data or derived/interpretive products?
- Do you collect soils/agriculture cap/su data? Where does it go?
- Name your top 5 favourite soils attributes?
- What are the top 3 theme maps you would like to see as a provincial coverage?
- What are your top 3 ‘improvements to data access’ wishes?
- What future training sessions would you be interested in?