

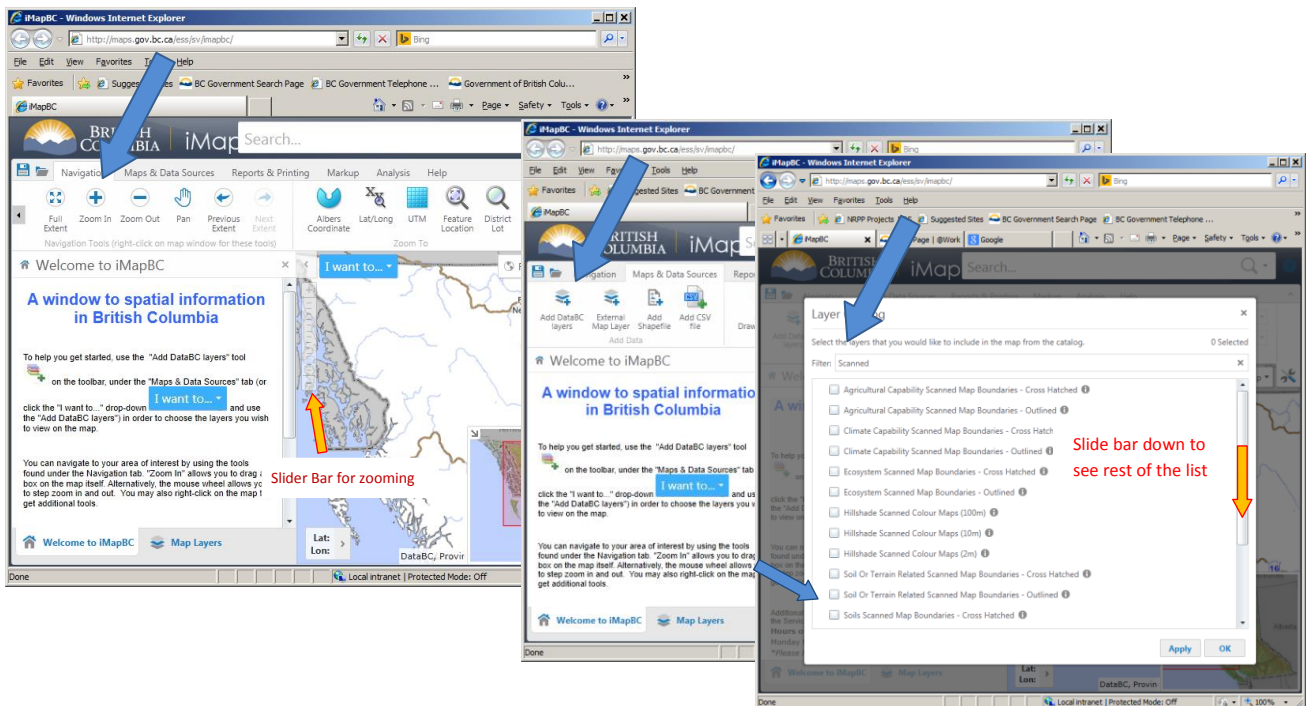
# Instructions for using iMapBC 2.0 to find Terrestrial Ecosystem Information (TEI) GIS data and Scanned Maps

(TEI includes Ecosystem, Terrain, Soil and Wildlife Habitat mapping and data)

The instructions below are customized for quick access to TEI data and scanned maps. Quick reference guides (basic & advanced) for using iMapBC 2 are available from:

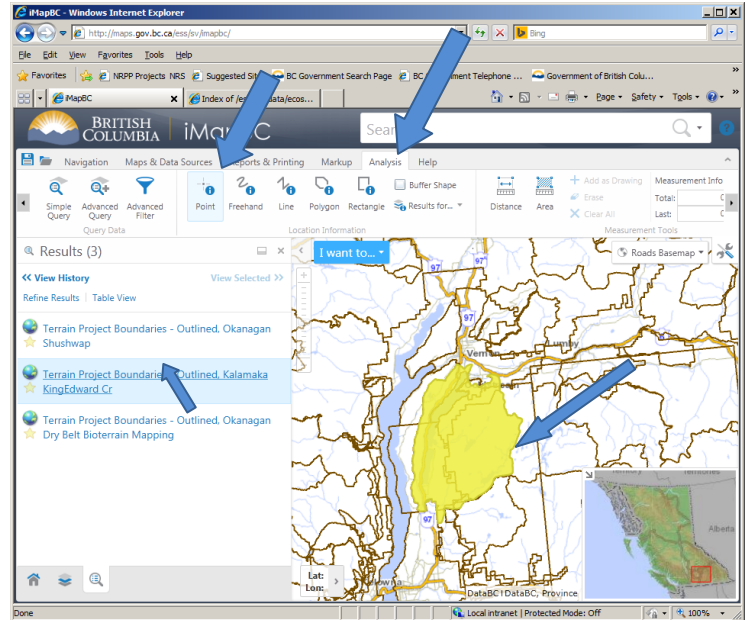
<https://www2.gov.bc.ca/gov/content/data/geographic-data-services/web-based-mapping/imapbc>

1. **Launch iMapBC** at: <http://maps.gov.bc.ca/ess/sv/imapbc/> (Use Internet Explorer)
2. **Zoom in** to the general area of interest on the map (double click on the map or use the scale slider.)
3. **Add map layers** - select the Maps & Data Sources tab > Add DataBC layers > Put one of the following terms into the Filter box (in the Layer Catalogue pop-up) > Select the layers of interest' > click **'OK'** (to close the window) or **'Apply'** (to filter again and add additional layers) :
  - for Soil, Terrain or Ecosystem Scanned Maps use: **'Scanned'**
  - for Agriculture Capability or Climate Capability Scanned Maps use: **'Agricuilt'** or **'Capability'**
  - for all TEI GIS data project locations use: **'Project Boundaries'**
  - for all TEI GIS data detailed polygon mapping use: **'Polygons'**
  - For Terrain (surficial material/landforms) Scanned Maps and GIS data use: **'Terrain'**
  - For Ecosystem and Pring and Sensitive Ecosystem Scanned Maps and GIS data use: **'Ecosystem'**
  - For Soil Scanned Maps and GIS data use: **'Soil'**
  - For Wildlife Habitat or Species Distribution Mapping use **'Wildlife'**



4. If some or your chosen map layers are **greyed out and not visible** on the map, you will need to **zoom in** to your area of interest until the map layers draw.

- Go to the Navigation tab and select the **+** (Zoom In) icon, and click on the map several times as needed
- As you zoom in, layers will draw and the text will turn from pale grey to dark grey.



5. **To query the details** about a feature on the map go to the Analysis tab and select the **i** (point) and click on the map.

- The list of results will show on the left
- Hover your cursor over each result and the corresponding feature will turn yellow on the map
- **Click on the result** to see information about the feature
- **The attributes** for the selected record will show in the pop-up window.
  - For Project Boundaries and Scanned Map records – scroll down to see the Data Descriptions and Data Download Links which provide **hyperlinks for downloading** the scanned map (.tif). file or GIS data (as applicable)
  - **Note:** scanned maps must be downloaded. They cannot be viewed using iMapBC.
  - Close the pop-up window by clicking on the top right hand corner **X**.

Or, select the 'Table View' to see all of the results in a table.

6. **To view the detailed mapping** (GIS data only) select the 'Project Boundaries' layer for the map theme of interest (e.g. Terrain) and the other 'Polygons' layers of interest, and continue to zoom in within one of the Project areas until the detailed mapping polygons draw.

- On the Analysis tab, use the **i** (point) to select a polygon. A pop-up box will show the polygon attributes.

Note: The Terrestrial Ecosystem Information (Terrain, TEM, PEM & SEI) GIS data is available in file geodatabase format (including the project boundaries and 'short table' information (as available for viewing using iMapBC), and also including the full RISC standard 'long table'(approx. 200 attributes), sample site locations, on-site symbols, and user-defined attributes, and the data dictionary) from:

[http://www.env.gov.bc.ca/esd/distdata/ecosystems/TEI/TEI\\_Data/](http://www.env.gov.bc.ca/esd/distdata/ecosystems/TEI/TEI_Data/)

Soil mapping GIS data is available from:

[Soil Survey Spatial Data](#) and [Soil Name and Layer Files](#) or from [Soil Data Packages](#)