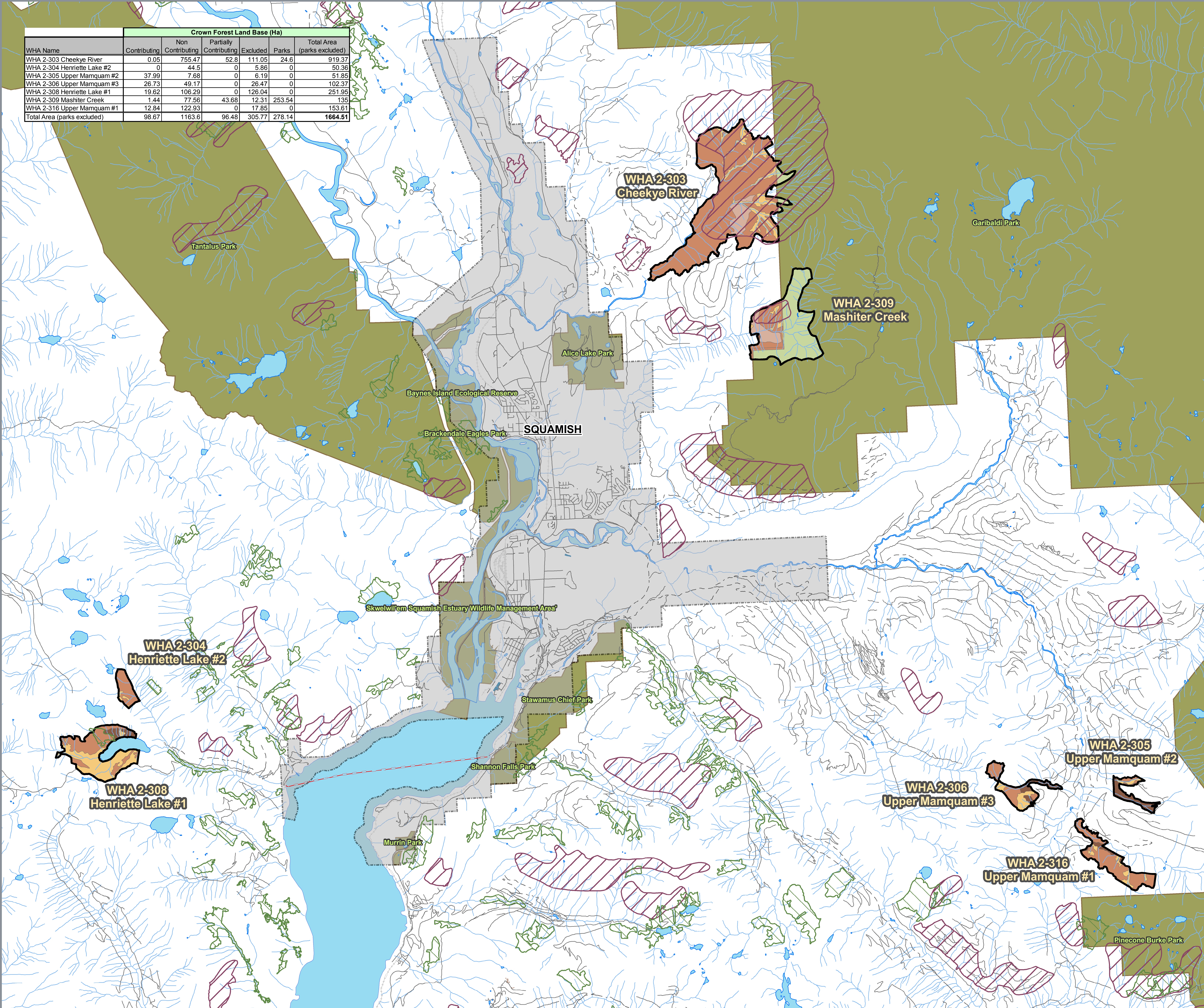


Marbled Murrelet Wildlife Habitat Areas Squamish Forest District

Crown Forest Land Base

WHA Name	Crown Forest Land Base (Ha)					Total Area (parks excluded)
	Contributing	Non Contributing	Partially Contributing	Excluded	Parks	
WHA 2-303 Cheekye River	0.05	755.47	52.8	111.05	24.6	919.37
WHA 2-304 Henriette Lake #2	0	44.5	0	5.86	0	50.36
WHA 2-305 Upper Mamquam #2	37.99	7.68	0	6.19	0	51.85
WHA 2-306 Upper Mamquam #3	26.73	49.17	0	26.47	0	102.37
WHA 2-308 Henriette Lake #1	19.62	106.29	0	126.04	0	251.95
WHA 2-309 Mashiter Creek	1.44	77.56	43.68	12.31	253.54	135
WHA 2-316 Upper Mamquam #1	12.84	122.93	0	17.85	0	153.61
Total Area (parks excluded)	98.67	1163.6	96.48	305.77	278.14	1664.51



Murrelet WHA

Crown Forest Land Base

- Contributing
- Non Contributing
- Partially Contributing
- Excluded
- Park Overlap

Ungulate Winter Range

OGMA

Provincial Parks

Transportation Features

- Ferry Route
- Road - Paved lanes
- Road - Loose
- Trail
- Tunnel
- Bridge
- Rail Line

1:44,000

0 1,300 2,600 5,200 Meters

Filepath: P:\env\1\wlm\sqm\sqm_murrelet\murrelet_overview_31mar08.mxd
 Date: 31 Mar 2008
 Author: Coast Region (Lower Mainland Service Centre)
 Projection/Datum: Albers Equal Area, NAD 83

Sources:
 Overview Imagery - s46_bc_2004_2006_scaib_15m_parc021_enh
 Inset Imagery - faser_valley_c200mm_Catalog

Created by: Andrew Yao

Draft - Confidential
For Government Use Only

The Integrated Land Management Bureau (ILMB) accepts no responsibility for the accuracy of the data shown on this map. All data is subject to change and cannot be used for legal descriptions. The most current digital files may or may not be stored at ILMB.