

SUMMARY OF CHANGES IMPLEMENTED TO THE HIGH ELEVATION WINTER RANGE SUB-MODEL OF CHASE (JULY 26, 2004)

To date all maps representing high elevation winter range (HEWR) for all herd areas presented to the Northern Caribou Recovery Implementation Group for North-Central BC have been based on Version 10b of the HEWR sub-model of CHASE¹.

In the spring of 2003 Sulyma and Alward² evaluated the v. 10b sub-model and made recommendations on how to improve the resultant map. The recommended changes were incorporated into a version identified as v. 11a.

Version 11a was run and the results presented to the winter-range subcommittee on April 13, 2004. The group agreed that the proposed changes appeared to produce improved results relative to v. 10b of the sub-model. They did, however, provide advice on further refinements.

The modifications recommended by the winter-range subcommittee were:

- to evaluate the input parent nodes and check against other parent nodes to ensure there was no redundancy within the structure; and,
- to consider moving the SPP_COMP node as a parent node of AL_Potential and incorporate it into the AL_STD_COND node (i.e. to ensure similar types of factors were appropriately grouped and fed into common themed child nodes).

The recommendations were applied as v. 11c and were compared to v. 11a and v. 10b. Very little difference was noted in the results between v. 11a and v. 11c, however, the model structure was improved with the v. 11c sub-model.

The attached figures present revised model structures and graphics of capability results for the three herd areas for each of the different versions of the sub-model.

Figures included for comparisons:

HEWR	Wolverine	Chase	Takla
v. 10b	Fig 1	Fig 2	Fig3
v. 11a	Fig 4		
v. 11c	Fig 5	Fig 6	Fig 7

¹ McNay, R. S., K. L. Zimmerman, and R. Ellis. 2003. Caribou habitat assessment and supply estimator (CHASE): Using modeling and adaptive management to assist implementation of the Mackenzie LRMP in strategic and operational forestry planning. Wildlife Infometrics Report No. 55. Wildlife Infometrics Inc., Mackenzie, BC. 115pp.

² Sulyma, R., and B. Alward. 2003. Recommended changes to the high-elevation winter range sub-model (version 10b) of the CHASE model. Wildlife Infometrics Report No. 62. Wildlife Infometrics Inc., Mackenzie, BC. 29pp

HEWR V. 10B

NOTE1: High Elevation Winter Range

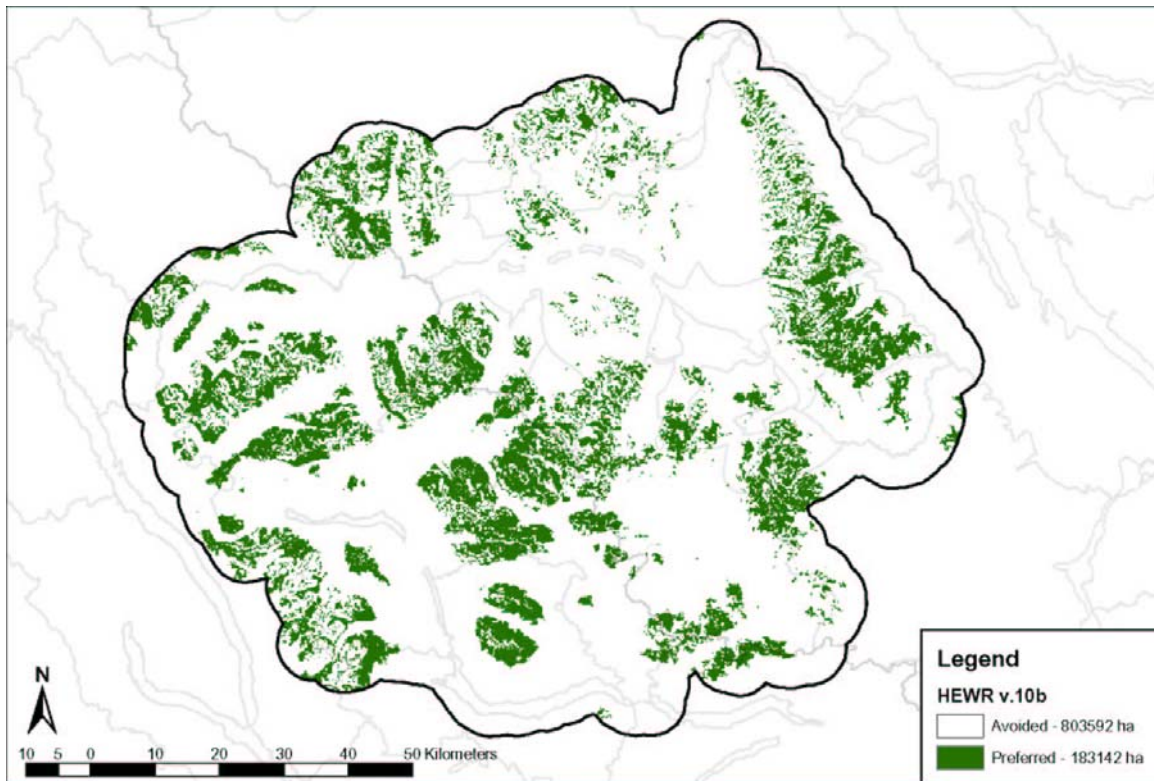
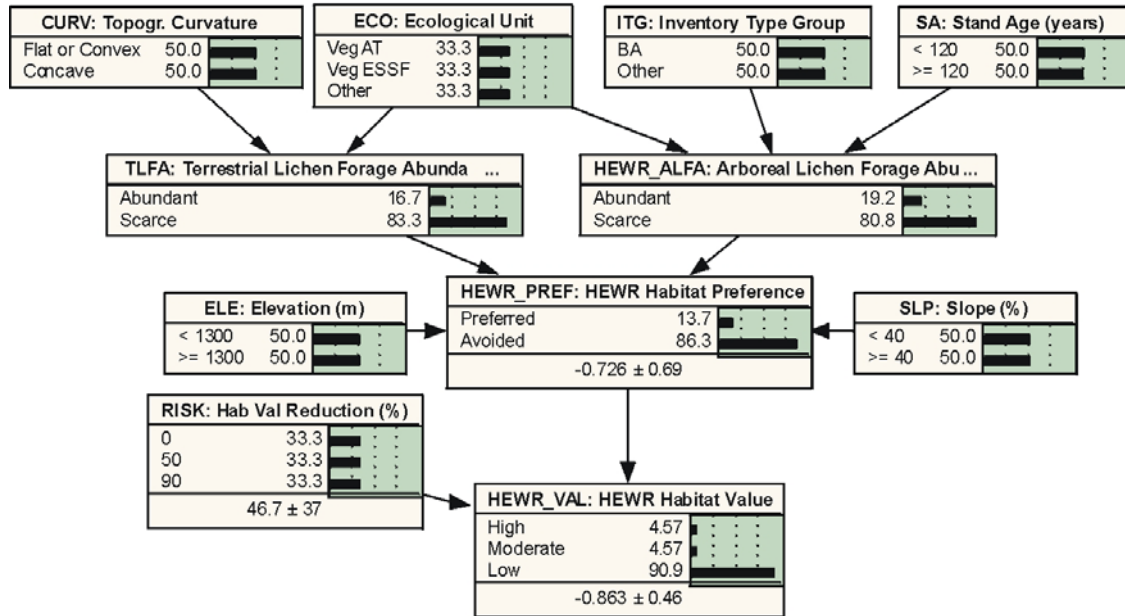


Figure 1. Wolverine Herd – HEWR v. 10b.

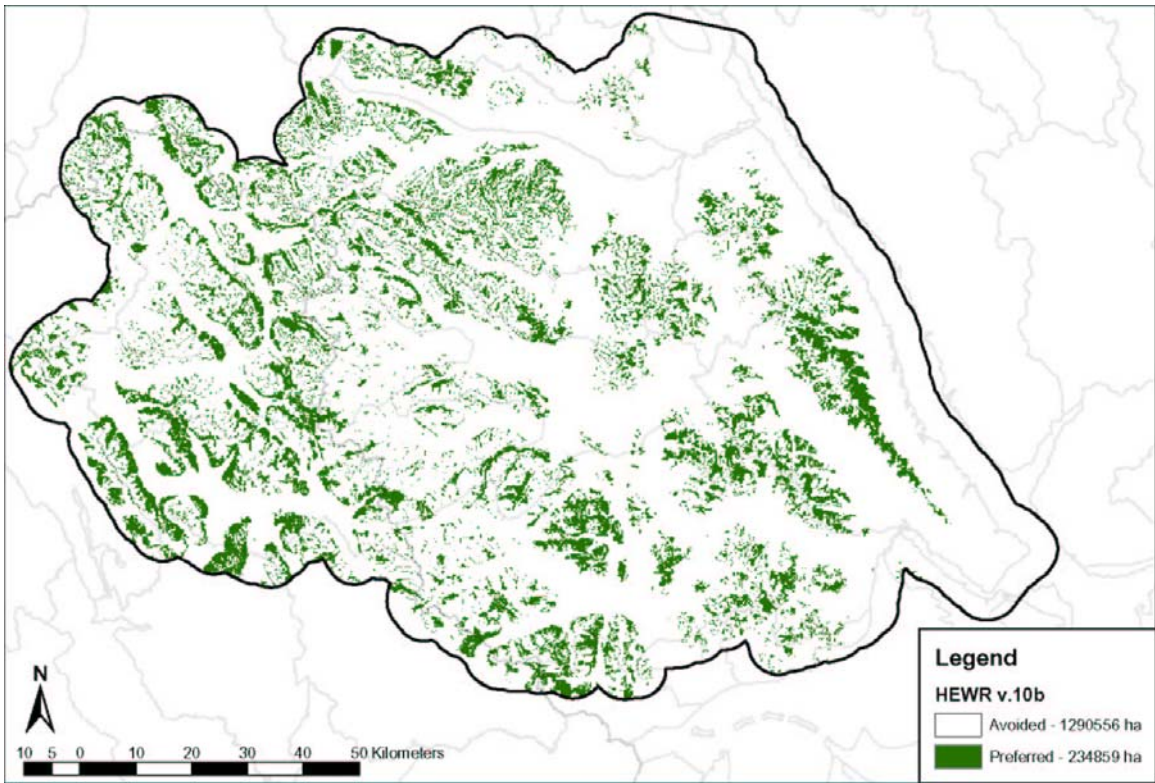


Figure 2. Chase Herd – HEWR v. 10b.

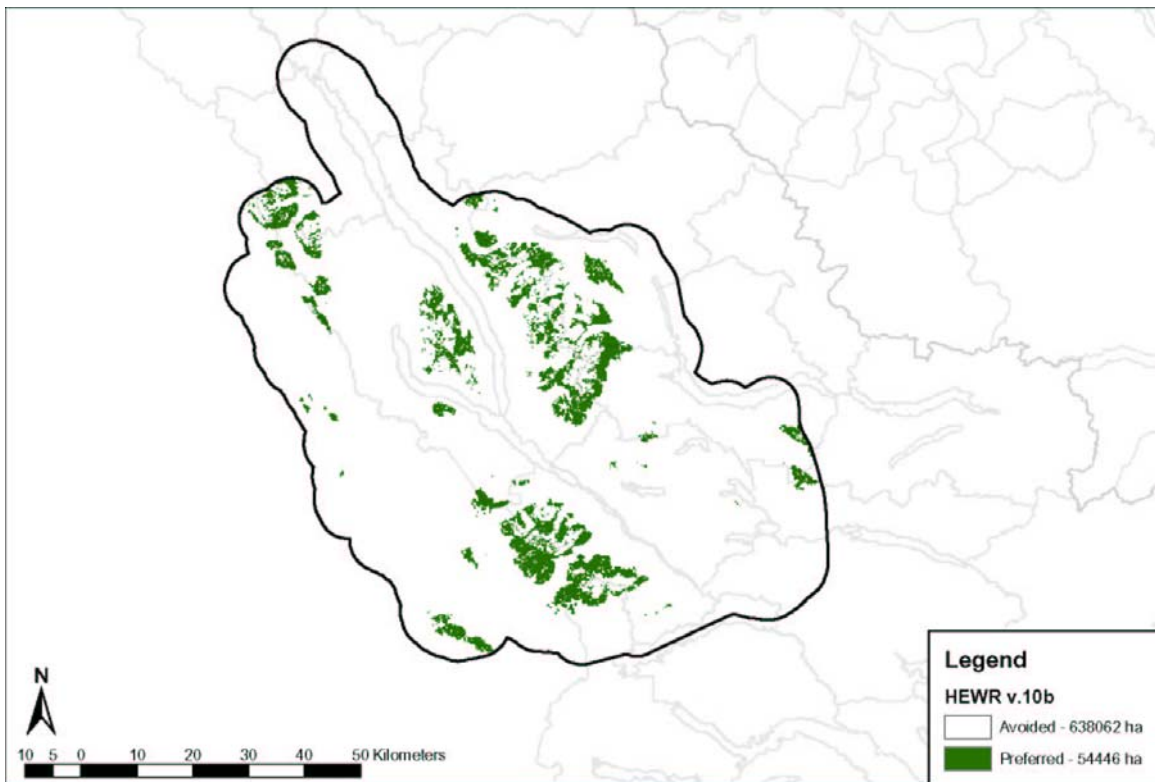


Figure 3. Takla Herd – HEWR v. 10b.

HEWR V. 11A

NOTE1: High Elevation Winter Range - Ver. 11a

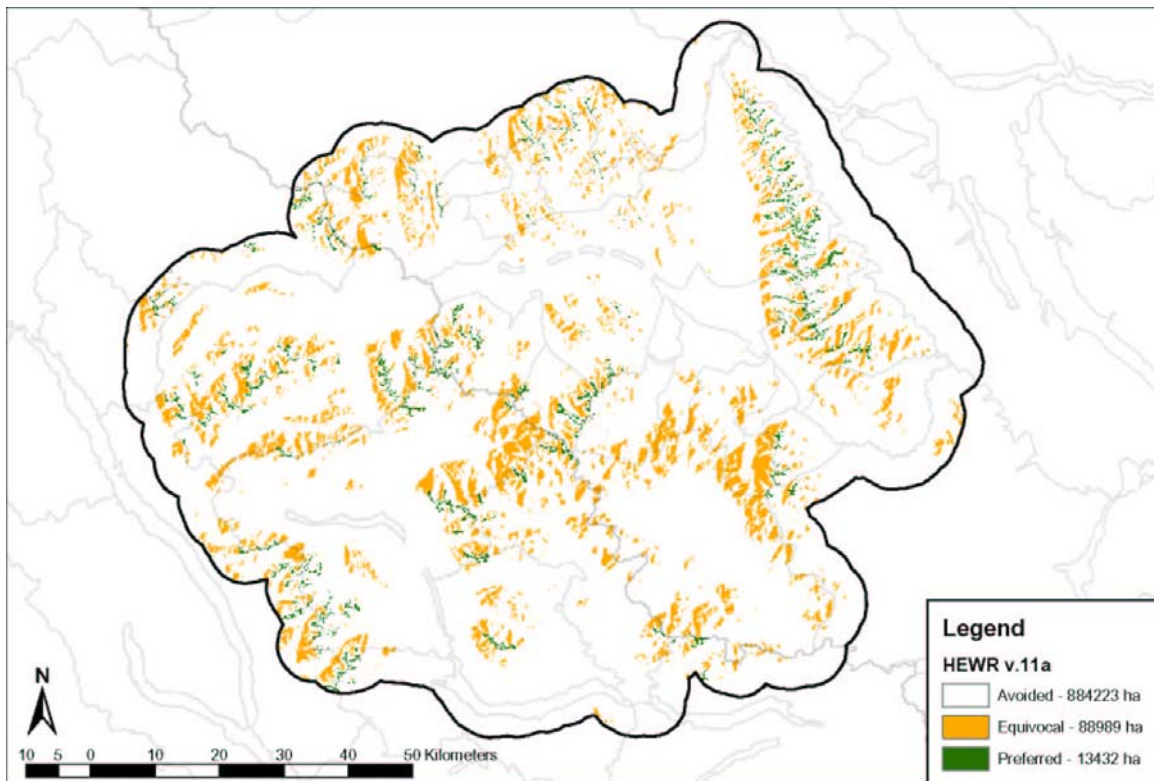
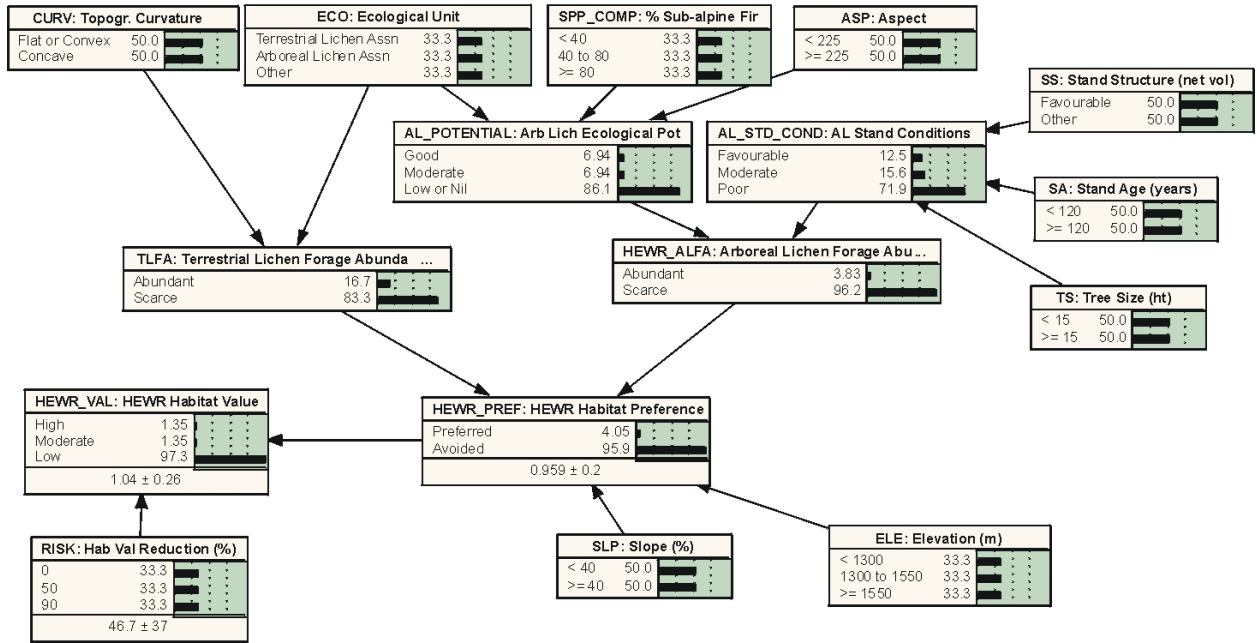


Figure 4. Wolverine Herd – HEWR v. 11a

HEWR V. 11C

NOTE1: High Elevation Wnter Range - Ver. 11c

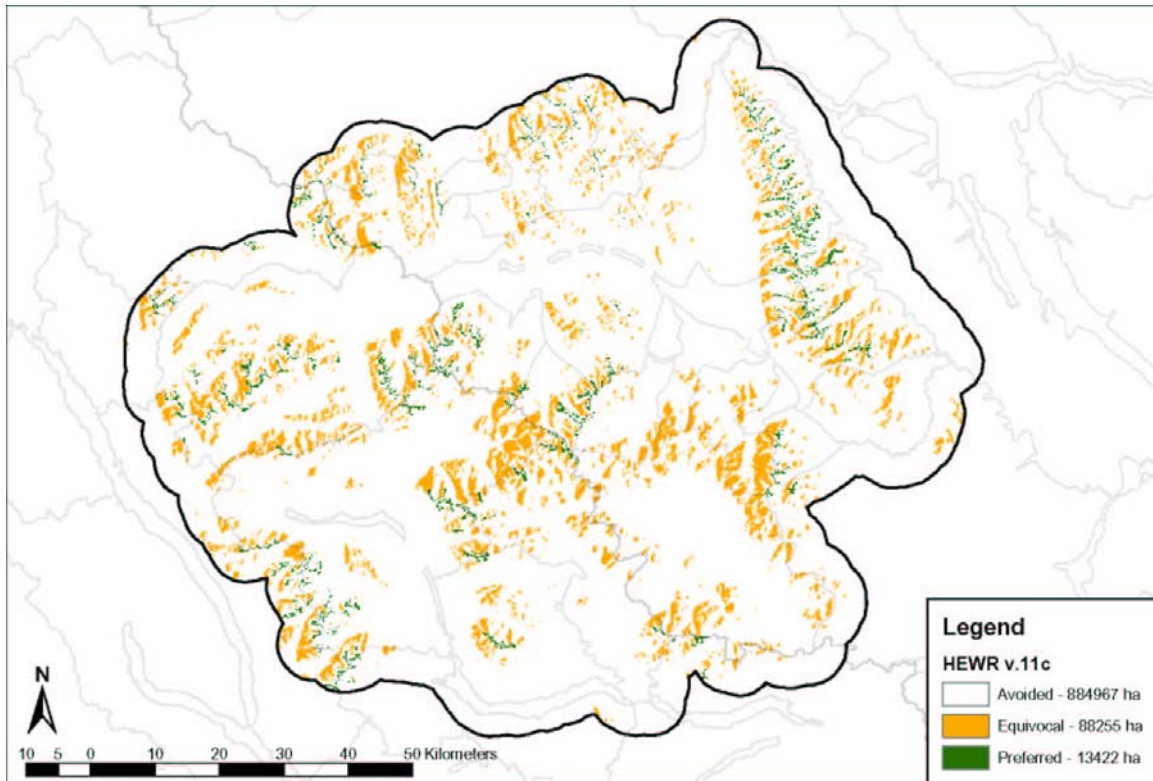
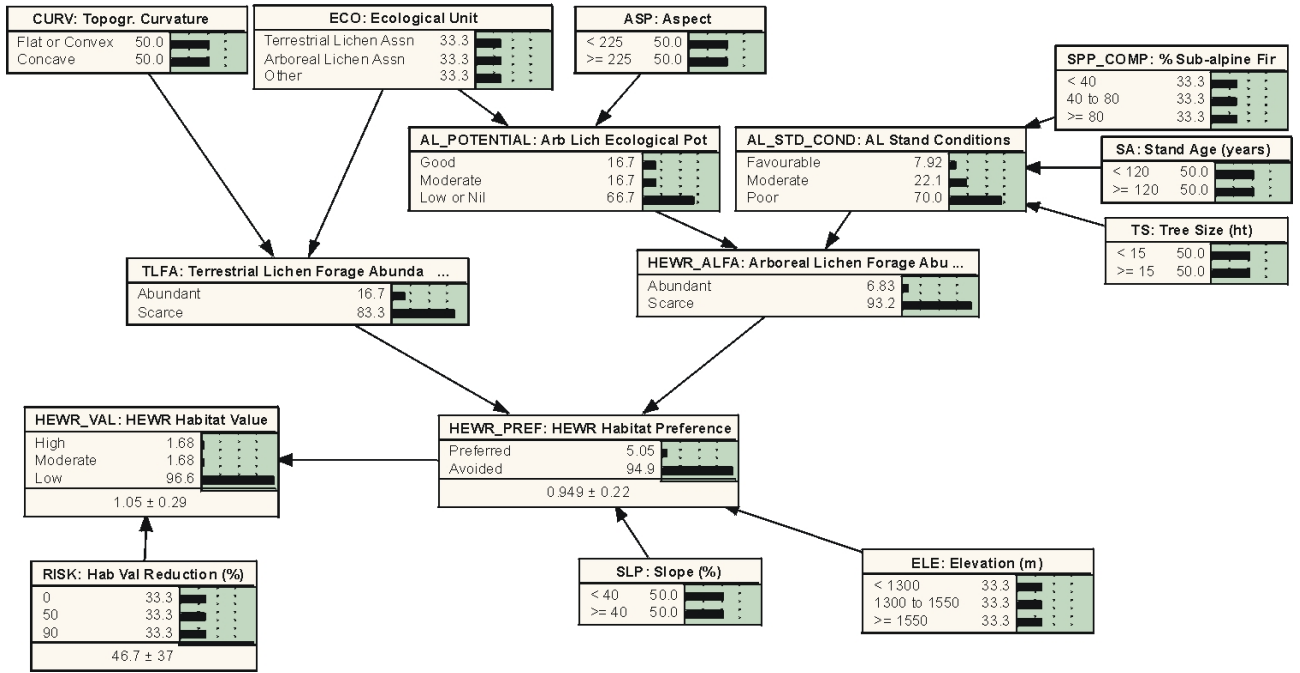


Figure 5. Wolverine Herd – HEWR v. 11c.

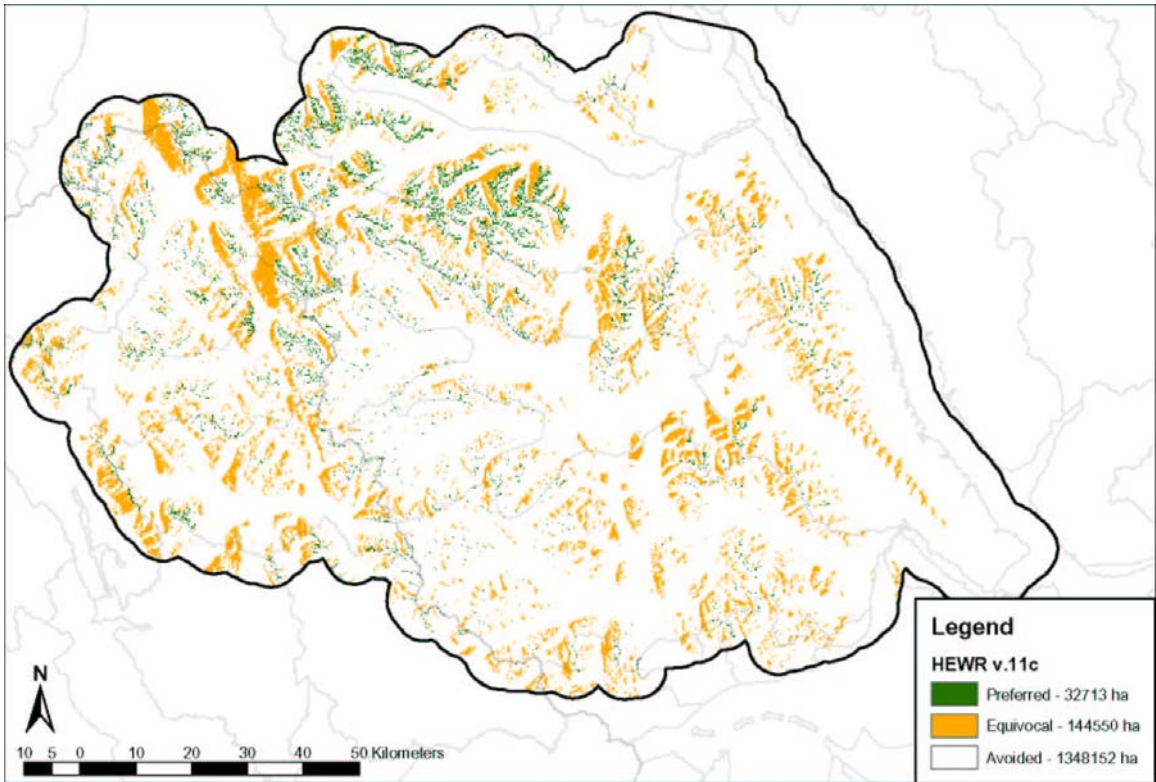


Figure 6. Chase Herd – HEWR v.11c.

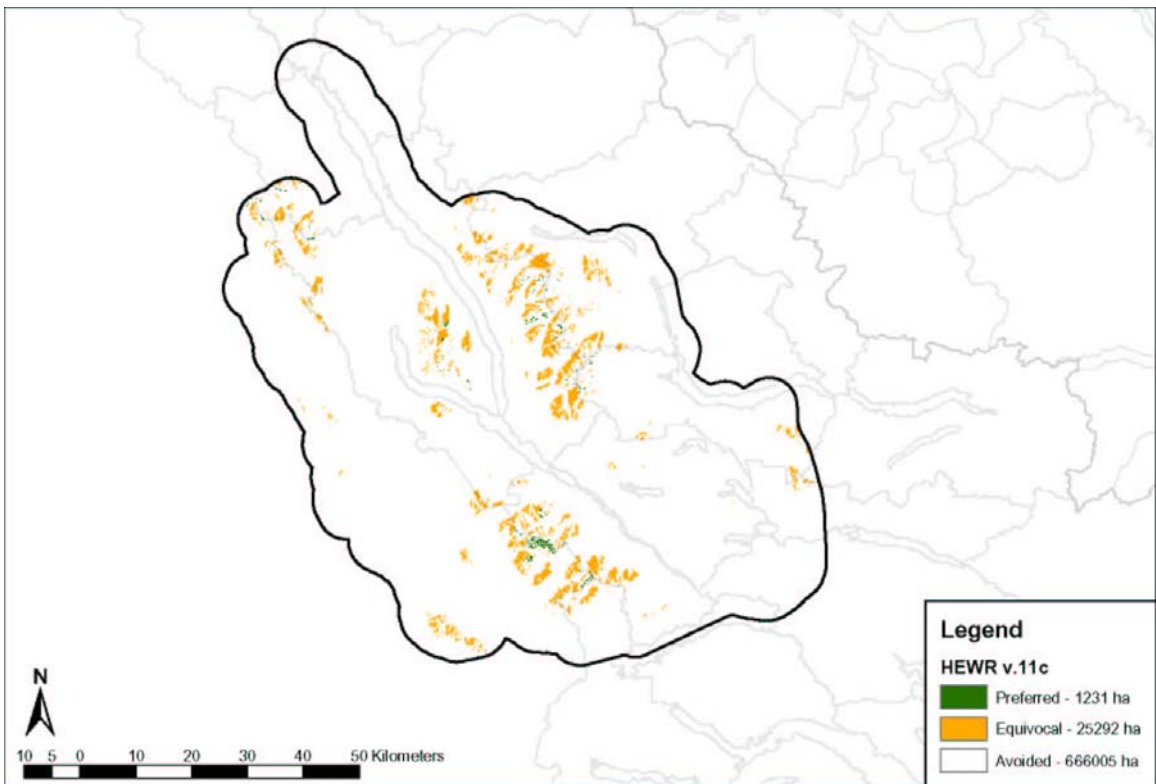


Figure 7. Takla Herd – HEWR v.11c.