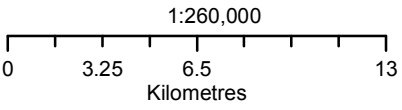
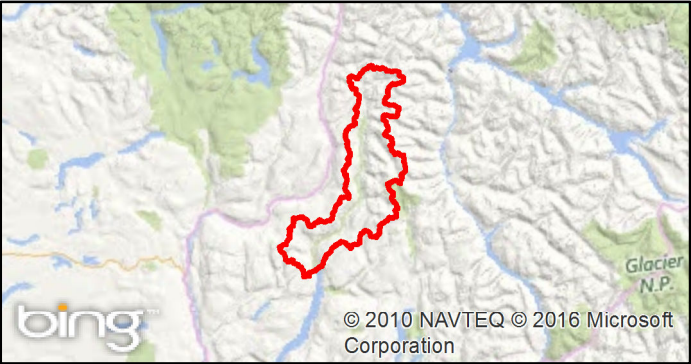


**Upper Adams River
Fisheries Sensitive Watershed**

- | | | |
|-------------|--------------|-------------------------|
| Watershed | Wetlands | Streams |
| Basin | Lakes | Contour (200m interval) |
| Sub-basin | Private Land | Paved Road |
| Max 25% ECA | | Gravel Road |



Last updated: 24/05/2016 | Updated by: mfaruqi



Ministry of
Forests, Lands and
Natural Resource Operations