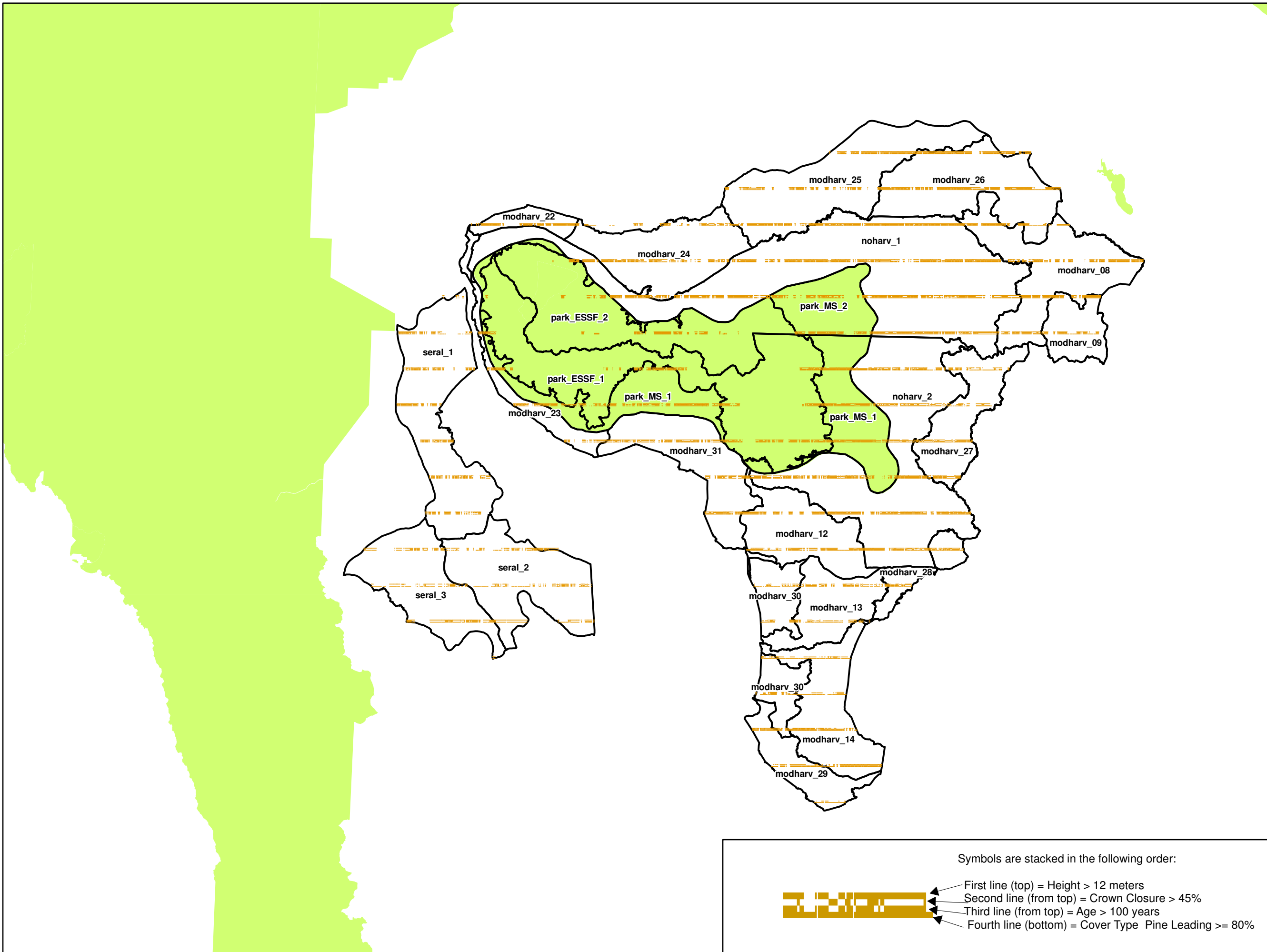
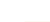


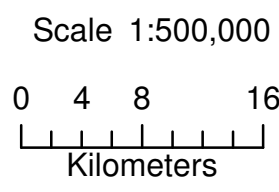



Linear Transect Analysis of Age, Crown Closure, and Height Variability In Pine Leading (>=80%) Stands Along Summer 2008 Aerial Photography Transects



-  Pine Leading, Age, Crown Closure, & Height Indicator
-  Northern Caribou Subunits
-  Parks and Protected Areas



Symbols are stacked in the following order:



- First line (top) = Height > 12 meters
- Second line (from top) = Crown Closure > 45%
- Third line (from top) = Age > 100 years
- Fourth line (bottom) = Cover Type Pine Leading >= 80%

Produced by Regional GeoBC  
 Integrated Land Management Bureau,  
 Williams Lake, British Columbia  
 May 5, 2009

Projection is UTM Zone 10, NAD 83

Project #wl\_08\_0207\_northern\_caribou  
 Historic Project #p9805038