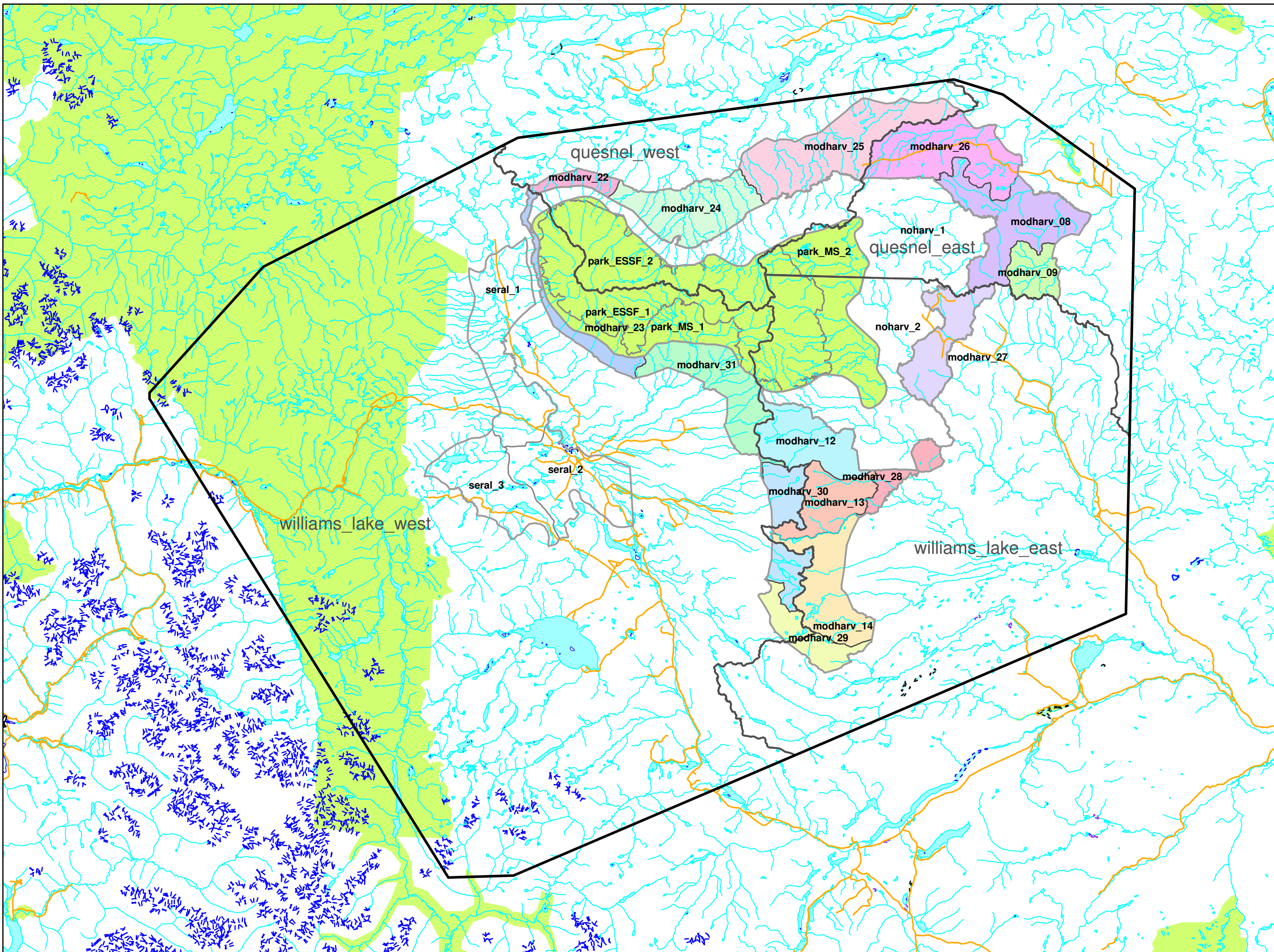


Sub-Units of the Caribou Modified Harvest Zone to which the 80:20 Terrestrial/Arboreal Objectives Apply



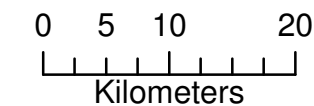
- Itcha-Ilgachuz Caribou Habitat Area
- Caribou Quadrant Boundary
- Caribou Habitat Management Zones
- Parks and Protected Areas - Colour Filled
- Road (Non-Forest Service)

ALLOCATING ARBOREAL VS TERRESTRIAL LICHEN SITES

* 20% of the non-reserved area of each uniquely coloured polygon should be managed with the arboreal lichen prescription; the remainder with the terrestrial lichen prescription.

* In addition to this map, follow the guidance in section 5.4 for allocation of arboreal and terrestrial sites

Scale 1:600,000



Produced by Regional GeoBC
Integrated Land Management Bureau,
Williams Lake, British Columbia
May 5, 2009

Projection is UTM Zone 10, NAD 83

Project #wl_08_0207_northern_caribou
Historic Project #p9805038