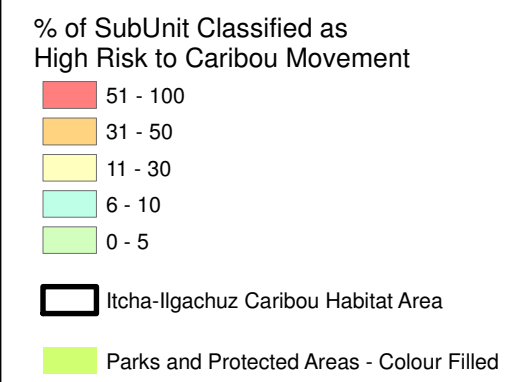
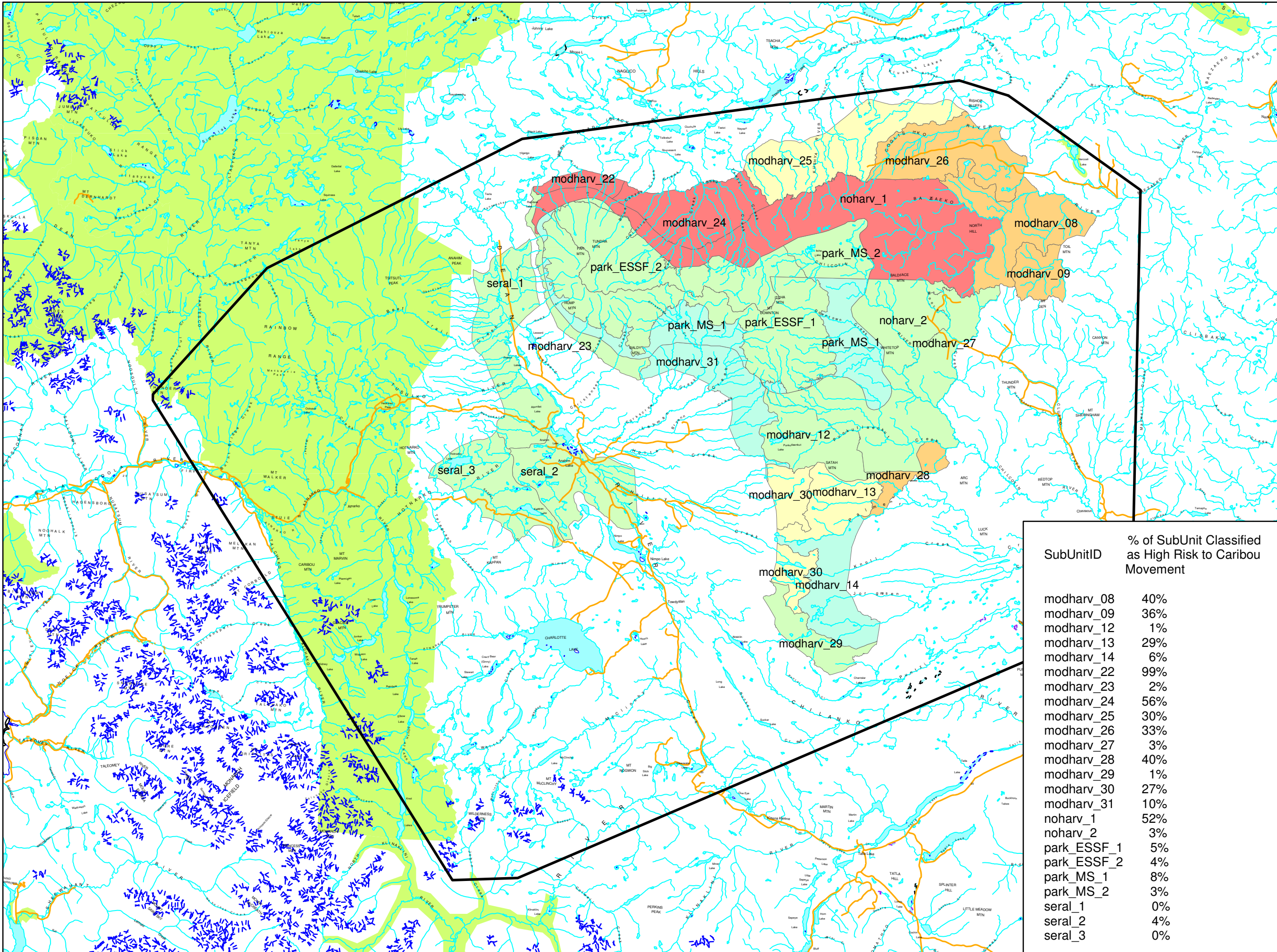
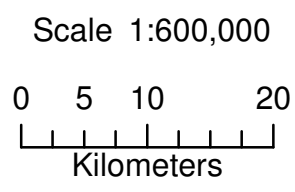


Risk to Caribou Movement within the Northern Caribou Strategy Area



| SubUnitID | % of SubUnit Classified as High Risk to Caribou Movement |
|-------------|--|
| modharv_08 | 40% |
| modharv_09 | 36% |
| modharv_12 | 1% |
| modharv_13 | 29% |
| modharv_14 | 6% |
| modharv_22 | 99% |
| modharv_23 | 2% |
| modharv_24 | 56% |
| modharv_25 | 30% |
| modharv_26 | 33% |
| modharv_27 | 3% |
| modharv_28 | 40% |
| modharv_29 | 1% |
| modharv_30 | 27% |
| modharv_31 | 10% |
| noharv_1 | 52% |
| noharv_2 | 3% |
| park_ESSF_1 | 5% |
| park_ESSF_2 | 4% |
| park_MS_1 | 8% |
| park_MS_2 | 3% |
| seral_1 | 0% |
| seral_2 | 4% |
| seral_3 | 0% |



Produced by Regional GeoBC
Integrated Land Management Bureau,
Williams Lake, British Columbia
May 13, 2009

Projection is UTM Zone 10, NAD 83

Project #wl_08_0207_northern_caribou
Historic Project #p9805038