



November 3, 2010

To: Distribution

The test fishing data from the Albion test fisheries suggest that there is a 25% chance of exceeding the abundance reference point of 1250 Thompson and Chilcotin steelhead. This reference abundance is identified in the 2010 Integrated Fisheries Management Plan for the management of Fraser River commercial chum fisheries. For the Thompson watershed alone, there a 30% chance of exceeding the abundance reference point of 850, the reference point used to open the catch-and-release sport fishery.

Sport fisheries on Interior Fraser steelhead will remain closed for the balance of the season.

A final update will be provided in the summer of 2011 to report on spawning population estimates and fishing mortality rate trends for this seasons' return.

Robert Bison
Fisheries Stock Assessment Biologist
Fish, Wildlife & Habitat Management Branch

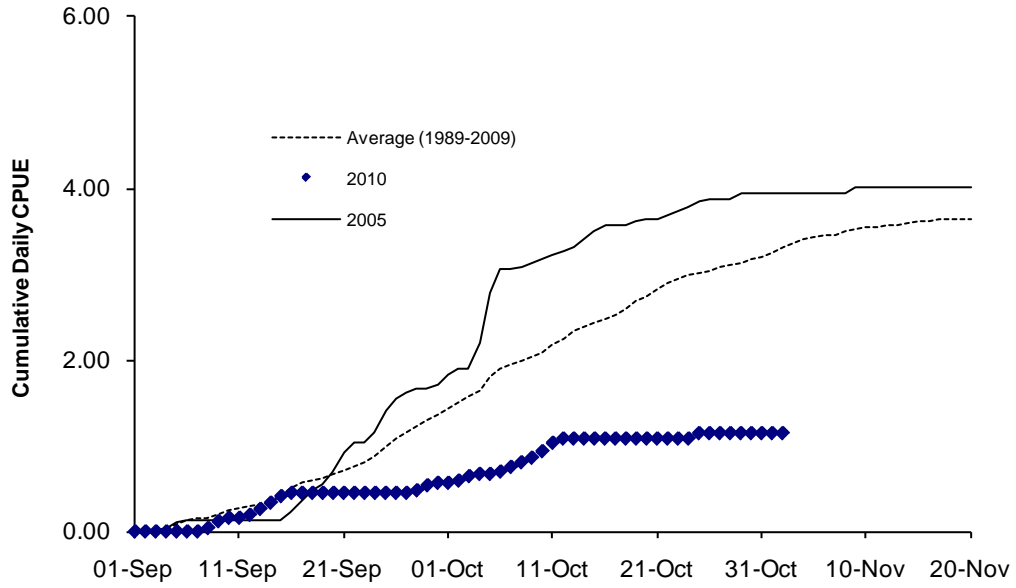


Figure 1. Cumulative daily CPUE for steelhead captured in the Albion chum test fishery relative to the recent average (dotted line) and relative to the predominant brood year (solid line). Updated to November 2, 2010.

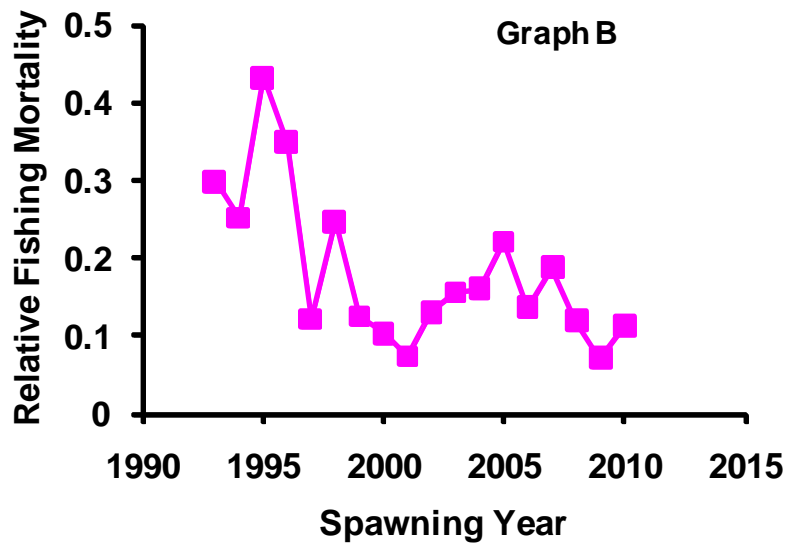
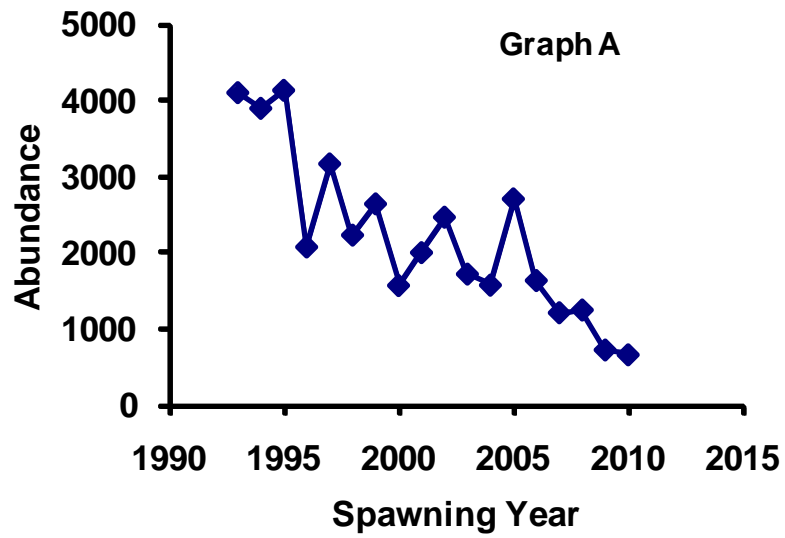


Figure 2. Trends in estimated pre-fishery abundance and fishing mortality of Thompson River steelhead.