

# REGION 7B - Peace

The Management Unit boundaries indicated on the map below are shown only as a reference to help anglers locate waters in the region. For more precise Management Unit boundaries, please consult one of the commercial Recreational Atlases available for B.C.

## Conservation Officer Service Field Offices

Please call one of the numbers below for recorded information or to make an appointment:

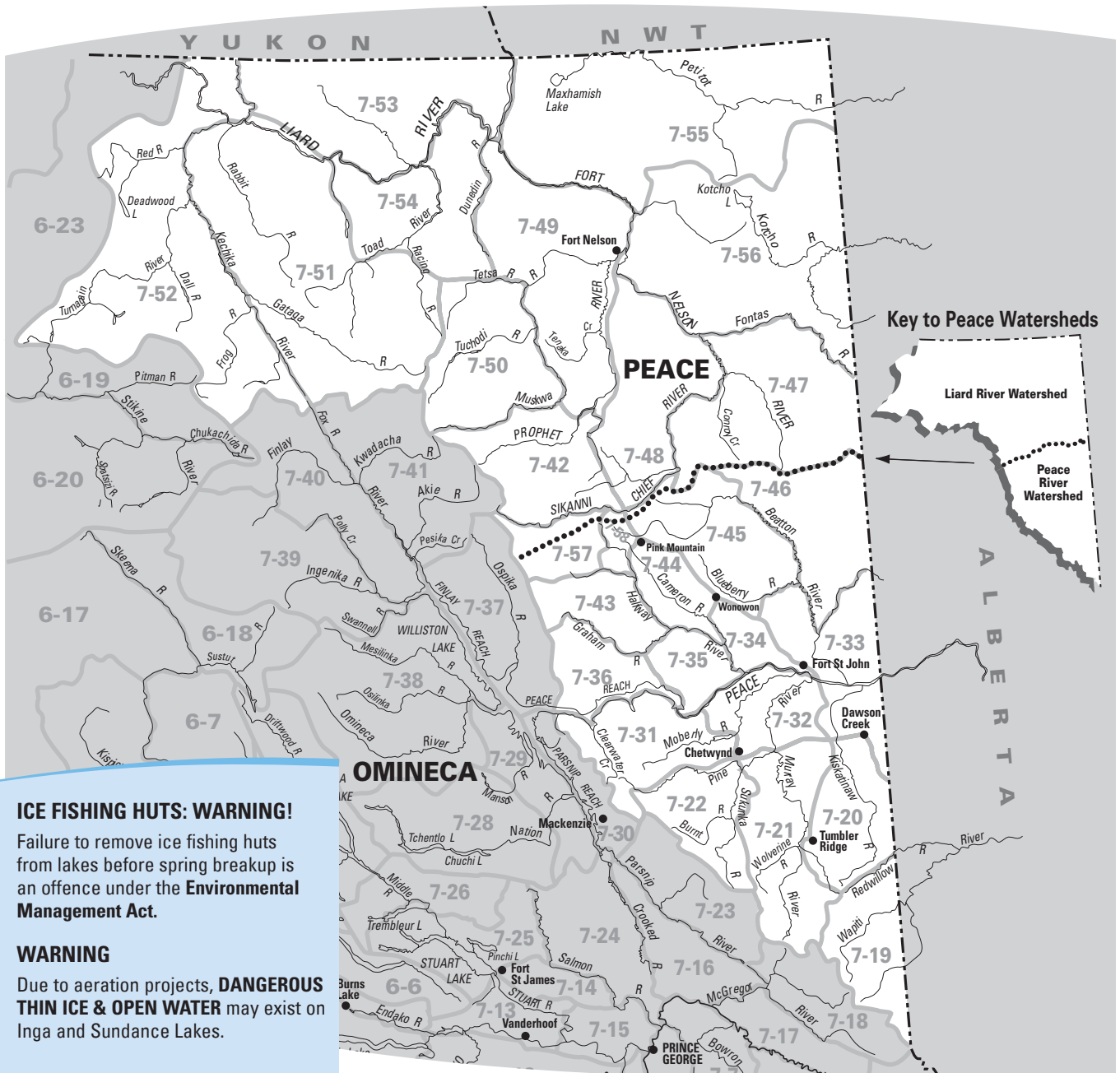
Chetwynd: (250) 788-3611  
 Dawson Creek: (250) 784-2304  
 Fort Nelson: (250) 774-3547  
 Fort St. John: (250) 787-3225

## Zone B (Peace) Fish and Wildlife Regional Office

(250) 787-3411  
 Rm 400, 10003-110th Ave.,  
 Fort St. John, B.C. V1J 6M7

## R.A.P.P.

**Report All Poachers and Polluters**  
 Conservation Officer 24 Hour Hotline  
 1-877-952-RAPP (7277)  
 Cellular Dial #7277  
 Please refer to page 12 for more information  
[www.rapp.bc.ca](http://www.rapp.bc.ca)



# REGION 7B - Peace

## REGIONAL REGULATIONS

### GENERAL ZONE B RESTRICTIONS

**Single barbless hook:** must be used in all streams of Zone B, all year.

**Bait ban:** applies to all streams of Zone B, all year.

**Fin fish:** (as defined on page 9 under "Rules on Bait Usage") may not be used as bait in any waters of Zone B.

**Set lining:** is not permitted in Zone B.

### POSSESSION QUOTAS

Possession quotas = 2 daily quotas for most species. See tables for exceptions.

**Exception:** possession quota = 1 daily quota for **Arctic grayling**, 1 daily quota for **bull trout**, and 1 daily quota for **lake trout**.

**NOTE: Bull trout and Dolly Varden are two distinct species. Since only bull trout are found in the Peace Region, we have removed references to Dolly Varden here.**

### TABLE LEGEND

See the following tables for exceptions and additional regulations on specific waters.



- Stocked Lake (not all stocked lakes listed, see p. 85)
- \* Including tributaries

### ZONE B DAILY CATCH QUOTAS

(See tables for exceptions)

**Trout/char: 5**, but not more than

- 1 over 50 cm
- 2 from streams
- 2 lake trout
- 1 bull trout

**NOTE: Bull trout** may only be retained from Oct. 16 to Aug. 14. These fish may only be from the Liard River watershed (or other specified waters) and only 30-50 cm in length. See below.

**And you must release:**

- **Rainbow trout** of any size from streams, May 1 to June 15
- **Lake trout** under 30 cm
- **Lake trout** of any size, Sept. 15 to Oct. 31
- **Bull trout** from the Liard River watershed Aug. 15 to Oct. 15, and from the Peace River watershed all year (See tables for exceptions)

**Arctic grayling: 2**

(none under 30 cm and only 1 over 45 cm)

**And you must release:**

- any size, May 1 to June 15
- all from Williston Lake and its tributaries

**Burbot: 5**

**Goldeye: 10**

**Inconnu: 1**

**Kokanee: 4** (none from streams)

**Northern pike: 3** (only 1 over 90 cm)

**Walleye: 3** (only 1 over 70 cm)

**And you must release:**

- all from streams, April 1 to May 15

**Whitefish: 15** (all species combined)

**Yellow perch: 5**

### ZONE A (OMINECA) REGULATIONS

Zone A regulations are now presented in a separate chapter. Please refer to pages 68-73.



Rivers produce great family fishing too!

Kevin Delawsky

# REGION 7B - Peace

## WATER-SPECIFIC REGULATIONS

MANAGEMENT UNIT (NOT ALL SHOWN - SEE PAGE 5)		EXCEPTIONS TO THE REGIONAL REGULATIONS
ANDY BAILEY (Jackfish) LAKE	7-48	No powered boats
BEATTIE LAKE	7-57	<b>No fishing</b> Nov 1- Apr 30 Trout daily quota = 1 (none over 50 cm); bait ban, single barbless hook
BELCOURT LAKE	7-19	<b>No fishing</b> Nov 1-Apr 30
BOOT LAKE	7-20	Engine power restriction - 7.5 Kw (10 hp)
BOULDER LAKE	7-22	No powered boats; situated at the head of Boulder Creek
BURNT RIVER *	7-22	Release all fish; artificial fly only
CAMERON LAKES	7-31	See North and South Cameron Lakes
CARBON LAKE	7-31	<b>No fishing</b> Nov 1-Apr 30 Lake trout daily and possession quotas = 1 (none under 30 cm) Engine power restriction - 7.5 Kw (10 hp)
CECIL LAKE	7-33	No powered boats
CECILIA CREEK	7-19	<b>Closed all year</b>
CECILIA LAKE	7-19	<b>No fishing</b> Nov 1-Apr 30 Trout/char daily quota = 2 (none under 40 cm); bait ban, single barbless hook
CHARLIE LAKE	7-33	Walleye daily and possession quotas = 3; northern pike daily and possession quotas = 3
"CHINAMAN" LAKE	7-35	See Chunamun Lake
CHOWADE RIVER *	7-43	<b>No fishing</b> upstream of the Horseshoe Road bridge, Aug 15-Oct 15
CHUNAMUN LAKE	7-35	<b>No fishing</b> Nov 1-Apr 30 Rainbow trout daily and possession quotas = 2 (none over 50 cm); bait ban, single barbless hook
CLEARWATER CREEK	7-31	Release all fish
CLEARWATER LAKE	7-31	<b>No fishing</b> Nov 1-Apr 30 Release all fish, May 1-Oct 31
DENETIAH CREEK	7-52	<b>No fishing</b> July 1-July 15
DENETIAH LAKE	7-52	Bait ban
DIMSDALE CREEK	7-19	<b>Closed all year</b>
DIMSDALE LAKE	7-19	Trout/char release; bait ban, single barbless hook
DINOSAUR LAKE (Reservoir Below W.A.C. Bennett Dam)	7-31	<b>Closed all year</b> from W.A.C. Bennett Dam to 100 m south of Gething Creek, and between the anti-vortex dyke and Peace Canyon Dam * No trout/char under 25 cm (release all bull trout); single barbless hook
FERN LAKE	7-42	<b>No fishing</b> June 1-July 15 Rainbow trout daily quota = 2 (none over 50 cm); bait ban
GETHING CREEK *	7-31	<b>Closed all year</b>
GWILLIM LAKE	7-21	Lake trout daily quota = 2 (none under 40 cm or over 60 cm); bait ban, single barbless hook
HALFWAY RIVER	7-34	<b>No fishing</b> from confluence with Peace River to boundary sign approximately 5 km upstream, March 1-June 30
HEART LAKE	7-22	Trout/char daily quota = 1 (none under 35 cm) Electric motors only
INGA LAKE	7-34	Engine power restriction - 7.5 Kw (10 hp) <b>WARNING! Dangerous thin ice due to aeration!</b>
JOHNSON CREEK *	7-31	<b>Closed all year</b>
KAKWA LAKE	7-19	<b>No fishing</b> Nov 1-Apr 30 Trout/char daily quota = 2 (none under 40 cm)
KAKWA RIVER	7-19	<b>Closed all year</b>
LETAIN LAKE	7-52	<b>No fishing</b> within 100 m of sign at outlet, May 15-July 31 Rainbow trout daily and possession quotas = 2 (none over 50 cm); bait ban, single hook
LIARD RIVER WATERSHED (see Map on page 74)	7-53	Bull trout release from all lakes & streams, Aug 15-Oct 15 Bull trout daily and possession quotas = 1 (none under 30 cm or over 50 cm) from all lakes & streams, Oct 16-Aug 14
LOWER BLUE LAKE	7-21	<b>No fishing</b> Nov 1-Apr 30 Bull trout daily & possession quotas = 1 (none under 40 cm or over 60 cm), May 1-Aug 14 Bait ban, single barbless hook
MOBERLY LAKE	7-31	<b>No fishing</b> Sept 15-Oct 31; lake trout release Nov 1-Sept 14
MONKMAN LAKE	7-21	<b>No fishing</b> Nov 1-Apr 30 Bull trout daily and possession quotas = 1 (none under 40 cm or over 60 cm), May 1-Aug 14 Bait ban, single barbless hook
MUNCHO LAKE	7-51	Lake Trout daily quota = 2 (none under 40 cm and only 1 over 60 cm); single barbless hook
MURRAY RIVER	7-21	Arctic grayling release from Kinuseo Falls to signs about 2 km downstream
NORTH CAMERON LAKE	7-31	No powered boats
ONE ISLAND LAKE	7-20	See ice hut warning, page 74
PEACE RIVER	7-31	Kokanee daily quota = 4 Arctic grayling EXEMPT from the May 1-June 30 release <b>Closed all year</b> between Peace Canyon Dam and Hwy #29 bridge; <b>No fishing</b> from mouth of Halfway River to boundary signs approx. 5 km upstream and 5 km downstream, March 1-June 30
PINE RIVER *	7-32	Release all fish upstream of the Hasler Road bridge
RADAR LAKE	7-20	No powered boats
RAINBOW LAKES	7-52	<b>No fishing</b> within 100 m of sign at outlet, May 15-July 31 Rainbow trout daily & possession quotas = 2 (none over 50 cm); bait ban, single hook
ROBB LAKE	7-57	Bull trout daily quota = 1 (any size)
SIMPSON LAKE	7-31	<b>No fishing</b> in lake Nov 1- Apr 30; tributaries closed all year Trout/char daily quota = 2 (none over 40 cm); bait ban, single barbless hook
SOUTH CAMERON LAKE	7-31	No powered boats

**NOTE:** If a lake or stream is NOT listed here, then only the Provincial Regulations (pages 9-11) and the Regional Regulations (page 75) apply. New restrictions are highlighted in blue. Check for any in-season changes at: [www.env.gov.bc.ca/fw/fish](http://www.env.gov.bc.ca/fw/fish)

**MANAGEMENT UNIT**  
(NOT ALL SHOWN - SEE PAGE 5)

**EXCEPTIONS TO THE REGIONAL REGULATIONS**

STEWART LAKE	7-32	Engine power restriction - 7.5 Kw (10 hp)
STONY LAKE	7-19	Engine power restriction - 7.5 Kw (10 hp)
SUNDANCE LAKE	7-32	<b>WARNING! Dangerous thin ice due to aeration!</b>
SWAN LAKE	7-20	Walleye release
TUPPER RIVER	7-20	<b>No fishing</b> within 100 m below outlet weir at Swan Lake Walleye release
WAPITI LAKE	7-19	Bait ban, single barbless hook
WILLISTON LAKE (in Zone B)	7-31	No rainbow trout under 30 cm
	7-36	<b>See mercury warning page 68</b> , and definition of "stream mouth" page 96 Arctic grayling release *
		Bull trout daily quota =1 (none under 30 cm or over 50 cm), Oct 16-Aug 14
WOLVERINE LAKE	7-52	No fishing within 100 m of sign at outlet, May 15-July 31 Rainbow trout daily and possession quotas = 2 (none over 50 cm); bait ban, single hook

Family fishing waters are great places to take kids fishing. All of the lakes have simple fishing regulations and are relatively easy to access. Many of the lakes can be fished from shore or from a pier. For more information, additional lakes, plus tips on fishing with kids, visit [www.gofishbc.com](http://www.gofishbc.com).

## Family Fishing Waters

### Catch up with your kids!



### Charlie Lake

**Northwest of Fort St. John.** The lake is easily accessed off the Alaska Hwy, near the junction of Hwy 29.

**Facilities:** Provincial Park with boat launch, picnic facilities, swimming beach, pit-toilets, campground, playground and hiking trails

**Regulations:** Walleye and northern pike daily and possession quotas = 3

**Species:** Wild northern pike, walleye, yellow perch, and burbot

### Quality Lake

**East of Tumbler Ridge.** From Tumbler Ridge, head north on the Heritage Hwy (Hwy 52) for approximately 5 kilometers and turn right (south) onto the Bearhole Lake Forest Road and drive for approximately 7 kilometers to the lake.

**Facilities:** none

**Regulations:** Regional regulations

**Species:** Stocked catchable rainbow trout

### Sundance Lake

**East of Chetwynd.** From Chetwynd, drive east on Hwy 97 for approximately 14 kilometers. The lake is located on the left (north) of the highway.

**Facilities:** none

**Regulations:** Regional regulations

**Species:** Stocked rainbow trout

**Tip:** Fish from shore or a boat

### Inga Lake

**Northwest of Fort St. John.** From Fort St. John, drive north on the Alaska Hwy (Hwy 97) for approximately 75 km. Turn left (south) onto an oil industry road and drive for approximately 2 km to the lake.

**Facilities:** Recreation Site with boat launch and parking

**Regulations:** Regional regulations; engine power restriction – 7.5 Kw (10 hp)

**Species:** Stocked rainbow trout

**Tip:** Fish from shore or from a boat

### "Borrow Pits"

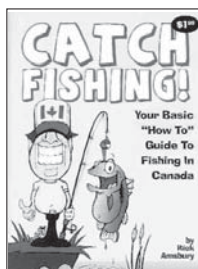
**Between Prophet River and Fort Nelson.** Heading south on the Alaska Hwy (Hwy 97) from Fort Nelson, the approximate driving distances to the pits from the bridge over Jackfish Creek are 9, 34, 42, and 54 km. The pits can be hard to find, so look for the blue fish-shaped markers along the highway for the access points.

**Facilities:** None

**Regulations:** Regional regulations

**Species:** Stocked rainbow trout

**Tip:** The small walk-in lakes provide shore fishing opportunities



We'd like to help you get the most out of fishing! This sturdy little booklet is a must for a novice angler's tacklebox! "Catch Fishing" is provided FREE to individual anglers.

Order your FREE copy today! Call Toll Free 1-877-822-8881  
For bulk orders a charge of \$0.99 per booklet applies.

#### LEARN HOW TO

- Pick Hot Lures
- Save \$\$\$ on Equipment
- Locate Fish
- Cast
- Cook & Clean Fish
- And more...