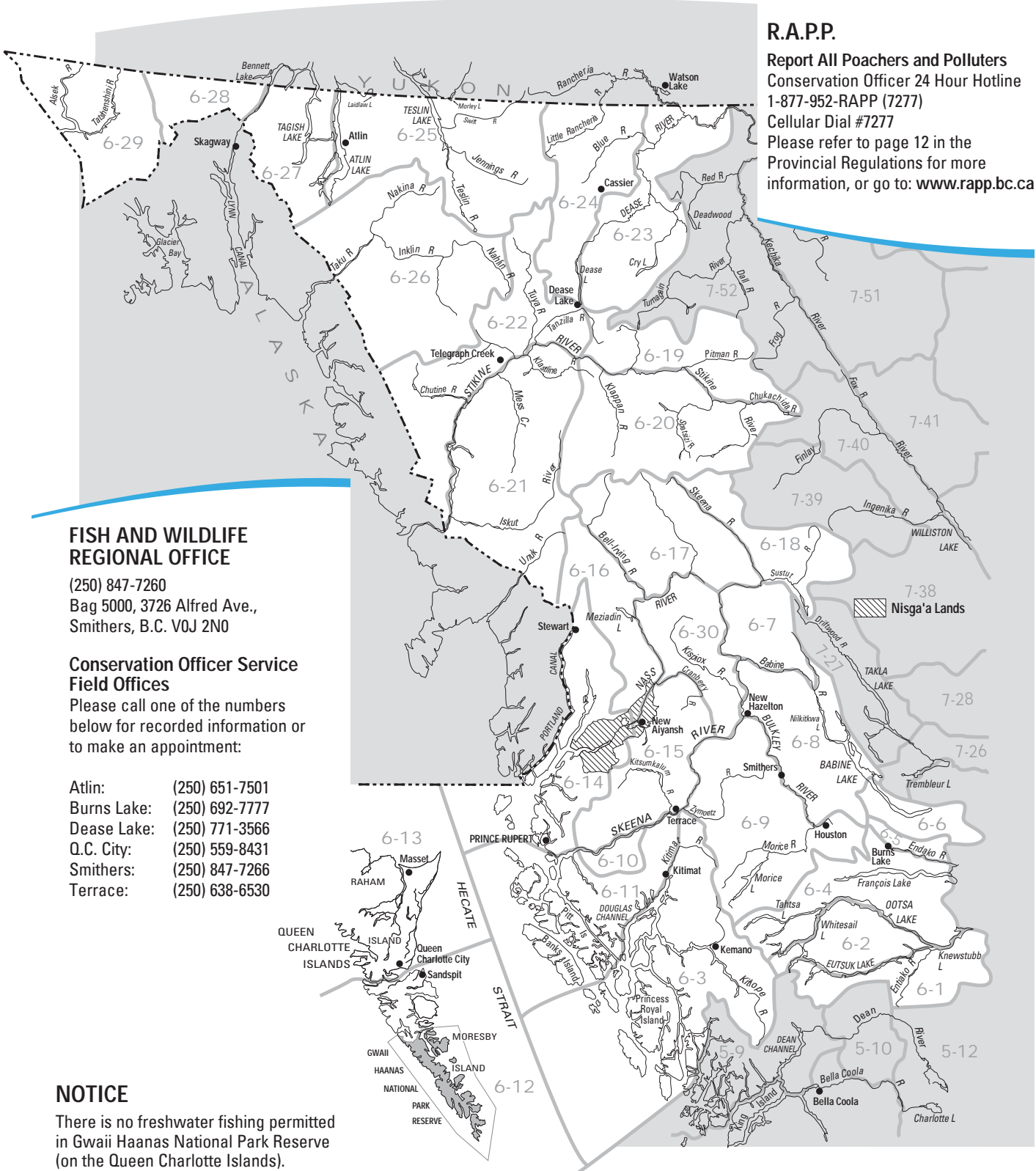


REGION 6 - Skeena

The Management Unit boundaries indicated on the map below are shown only as a reference to help anglers locate waters in the region. For more precise Management Unit boundaries, please consult one of the commercial Recreational Atlases available for B.C.



R.A.P.P.

Report All Poachers and Polluters
 Conservation Officer 24 Hour Hotline
 1-877-952-RAPP (7277)
 Cellular Dial #7277
 Please refer to page 12 in the
 Provincial Regulations for more
 information, or go to: www.rapp.bc.ca

FISH AND WILDLIFE REGIONAL OFFICE

(250) 847-7260
 Bag 5000, 3726 Alfred Ave.,
 Smithers, B.C. V0J 2N0

Conservation Officer Service Field Offices

Please call one of the numbers
 below for recorded information or
 to make an appointment:

- Atlin: (250) 651-7501
- Burns Lake: (250) 692-7777
- Dease Lake: (250) 771-3566
- Q.C. City: (250) 559-8431
- Smithers: (250) 847-7266
- Terrace: (250) 638-6530

NOTICE

There is no freshwater fishing permitted
 in Gwaii Haanas National Park Reserve
 (on the Queen Charlotte Islands).

REGION 6 - Regional Regulations

GENERAL RESTRICTIONS

NO FISHING: in any stream in the watersheds of the **Skeena River** above Cedarvale or **Nass River** above Kitsault Bridge, Jan. 1 to June 15 (NOTE: **Nass River** mainstem is EXEMPT and **Skeena River** mainstem above Cedarvale is only closed Jan. 1 to May 31). See tables for other exceptions.

NO FISHING: in any stream in the **Iskut River** watershed (upstream of Forest Kerr Canyon), April 1 to June 30; and in the **Fraser River** watershed in **Region 6**, April 1 to June 30.

Single barbless hook: must be used in all streams of **Region 6**, all year.

Set lining for burbot is permitted in the lakes of **Region 6**. Please refer to set lining and the use of fin fish for bait on page 9 in the Provincial Regulations.

REGIONAL DAILY CATCH QUOTAS (See tables for exceptions)

Trout/char: 5, but not more than

- 1 over 50 cm (includes **Kitimat hatchery steelhead**)
- 2 from streams
- 3 **Dolly Varden/bull trout** and **lake trout** combined

And you must release:

- **ALL WILD STEELHEAD**
- **Trout/char** under 30 cm from any stream
- **Lake trout** from Fraser, Skeena, and Nass river watersheds, Sept. 15 to Nov. 30

Arctic grayling: 3

Burbot: 5

Inconnu: 1

Kokanee: 10 (none from streams)

Northern pike: 5

Whitefish: 15 (all species combined)

White Sturgeon: CATCH AND RELEASE ONLY

POSSESSION QUOTAS

Possession quotas = 2 daily quotas.
(See tables for exceptions)

NOTICE TO ANGLERS

Single barbless hooks must be used in all **Region 6 streams**, all year.

A "single hook" (not barbless) restriction is now under consideration for all **Region 6 lakes** to reduce handling time and mortality for fish being released, and to simplify the regulations. Your feedback is welcomed. Please forward comments to the Fish and Wildlife Regional Office in Smithers.

DAILY AND ANNUAL CATCH QUOTAS FOR SALMON

Please refer to the NOTICE on page 4 in the Provincial Regulations for Salmon Regulations.

STEELHEAD STAMP REQUIREMENT

Before fishing steelhead waters, please refer to "Classified Waters" and "Conservation Surcharges" (pages 7 & 8 in the Provincial Regulations) for the requirements for a Steelhead Conservation Surcharge Stamp.

ANNUAL CATCH QUOTAS

Annual catch quota for all B.C.:
10 hatchery steelhead per licence year.

FOR SALMON INFORMATION

Fisheries and Oceans Canada
District Offices (DFO)

Terrace:	(250) 615-5350
New Hazelton:	(250) 842-6327
Smithers:	(250) 847-2312
Nass Camp:	(250) 633-2408
North Coast (Prince Rupert):	(250) 627-3499
Central Coast (Bella Coola):	(250) 799-5345
Queen Charlotte City:	(250) 559-4413
Whitehorse (MU's 6-19 to 6-29)	(867) 393-6722

Exotic Alert: Atlantic Salmon

Please refer to the salmon section, page 4 in the Provincial Regulations.



NOTICE TO ANGLERS FISHING B.C.-YUKON TRANSBOUNDARY WATERS

To simplify angling and licensing regulations, and to improve fisheries management, a transboundary management agreement is in place for five lakes and two river systems which straddle the B.C.-Yukon border. The **lakes are Bennett, Laidlaw, Morley, Tagish, and Teslin** (not including any of their inlet or outlet streams). The **ivers are the Rancheria and Swift, plus their tributaries**. (NOTE: Lakes in the Rancheria and Swift watersheds are NOT included in the agreement.)

Anglers may fish any part of the affected waters with either a Yukon or British Columbia angling licence. (NOTE: A B.C. licence is required to fish the B.C. portion of **Atlin Lake** even though it is also a transboundary water.)

The quotas and size limits for these waters are now similar on both sides of the border, but **tackle restrictions have not been amended under the agreement**. Please refer to the Water-Specific Tables in **Region 6** for detailed information on the daily catch quotas and possession quotas, as well as gear, method, and bait restrictions applicable to the B.C. portions of these waters. Information on quotas and tackle restrictions for the Yukon portions of the transboundary waters may be found in the Yukon regulations.

Anglers are reminded that they are entitled to **only one daily quota for any given species in these waters**, regardless of which side of the border the fish were taken and even if they possess both B.C. and Yukon angling licences.

Please obtain a copy of the Yukon regulations before fishing Yukon waters.

TABLE LEGEND

See the following tables on the next page for exceptions and additional regulations on specific waters.

- ➡ Stocked Lake (not all stocked lakes listed, see article on stocking (URL))
- cw** Classified Waters Licence required to fish Class I or Class II waters, see p. 8 in the Provincial Regulations
- * Including tributaries
- ◆ For Management Unit information see page 5 in the Provincial Regulations

REGION 6 - SKEENA

WATER-SPECIFIC REGULATIONS

MANAGEMENT UNIT (NOT ALL SHOWN ⇄)	EXCEPTIONS TO THE REGIONAL REGULATIONS	
ATLIN LAKE	6-25 6-27	Lake trout daily quota = 3: EITHER none over 60 cm, OR only 1 over 60 cm and the other 2 must be 60 cm or less; Arctic grayling daily quota = 3 (only 1 over 35 cm); Northern pike daily quota = 5 (only 1 over 70 cm); whitefish daily quota = 5 Only one daily quota may be retained from Atlin Lake regardless of which side of the border the fish were taken
BABINE LAKE	6-6	Closed all year east of a line from Gullwing Creek to the south shore of Babine Lake No fishing within a 400 m radius of the mouth of Pinkut Creek, Aug 15-Sept 15 That section of flowing water between Babine and Nilkitkwa lakes is designated Babine River (see map below); Regional stream regulations apply.
BABINE RIVER	cw 6-8	Closed all year between signs posted about 100 m above and 80 m below the adult fish counting fence, located approx. 1.8 km downstream of Nilkitkwa Lake Open all year in the channel between Babine and Nilkitkwa lakes Fly fishing only (a) from a point 100 m above Fort Babine bridge to 100 m above the adult fish counting fence (including Nilkitkwa Lake), during open times and (b) from signs about 80 m below the adult fish counting fence to Nichyeskwa Creek, June 16-Sept 30 Bait ban No angling from boats below adult fish counting fence; see location above Downstream of the juvenile fish counting weir located at the outlet of Nilkitkwa Lake to the confluence with Skeena River*: Class I water Sept 1-Oct 31 & Steelhead Stamp mandatory Sept 1-Oct 31
BASALT LAKE	6-1	No ice fishing; trout release; bait ban, single barbless hook
BEAR RIVER * (Sustut Watershed)	6-18	Closed all year
BELL-IRVING RIVER	6-17	Bait ban, Aug 1-Dec 31
BENNETT LAKE	6-28	Lake trout daily and possession quotas = 2 (only 1 over 90 cm, none between 60 cm and 90 cm); Arctic grayling daily and possession quotas = 4 (only 1 over 44 cm, none between 36 cm and 44 cm); Northern pike daily and possession quotas = 4 (only 1 over 100 cm, none between 70 cm and 100 cm); whitefish daily quota = 5
BISH CREEK *	6-11	Trout/char release; bait ban
BUCKINGHORSE LAKE	6-20	No fishing within 100 m of outlet, May 15-July 31 Trout/char daily and possession quotas = 2 (none over 50 cm); bait ban, single hook
BUCKLEY CREEK	6-21	No fishing Nov 1-Apr 30 Rainbow trout daily quota = 2 (none over 50 cm); bait ban
BUCKLEY LAKE	6-21	No fishing Nov 1- Apr 30 Rainbow trout daily quota = 2 (none over 50 cm); bait ban, single barbless hook
BULKLEY RIVER	cw 6-9	Closed all year above Morice/Bulkley River confluence * Bait ban, Aug 1-Dec 31 * (EXCEPT Morice R. *, Suskwa R. *, and Two Mile Creek) No angling from boats from Morice River to CNR bridge at Barrett, Aug 15-Dec 31, and in Moricetown Canyon or within 100 m downstream, all year Class II water Sept 1-Oct 31* (see Suskwa River, a Bulkley tributary) & Steelhead Stamp mandatory Sept 1-Oct 31 *
CASEY LAKE	6-4	Bait ban, single barbless hook; engine power restriction - 7.5 Kw (10 hp)
CHESLATTA LAKE	6-4	Lake trout release, Sept 15-Oct 31 Lake trout daily and possession quotas = 3 (only 1 over 50 cm), Nov 1-Sept 14
CHESLATTA RIVER	6-4	Trout/char release and bait ban below Cheslatta Falls
CHILKOOT TRAIL NATIONAL HISTORIC PARK WATERS	6-28	Closed all year. Please contact Parks Canada for details (see page 11 in the Provincial Regulations)
CHIPMUNK LAKE	6-1	Trout daily quota = 2; bait ban, single barbless hook
COPPER CREEK	cw 6-12	No fishing from Skidegate Lake to signs at second bridge 6 km above tidal boundary, Feb 1-Apr 30 Cutthroat trout release Class II water Sept 1-Apr 30*; Steelhead Stamp mandatory Dec 1-Apr 30 *
COPPER RIVER	6-9	See Zymoetz River
CRANBERRY RIVER	6-15	Closed all year between signs above and below Cranberry River Canyon Note: The section of river from Cranberry-Kiteen junction to Nass River is the Cranberry River Bait ban, Aug 1 - Dec 31
DALA RIVER *	6-3	Bait ban, June 1-June 14 and Aug 2-Oct 15 No fishing June 15-Aug 1
DAMDOCHAX CREEK	cw 6-17	Bait ban Class II water Sept 1-Oct 31*; Steelhead Stamp mandatory Sept 1-Oct 31 *
DATLAMEN CREEK *	cw 6-13	Class II water Sept 1-Apr 30; Steelhead Stamp mandatory Dec 1-Apr 30
DEENA CREEK *	cw 6-12	No fishing above signs at second bridge 5 km above tidal boundary, Feb 1-May 31 Class II water Sept 1-Apr 30; Steelhead Stamp mandatory Dec 1-Apr 30
DEEP CREEK	6-15	Closed all year
"DIANA" CREEK	6-14	No fishing Aug 1-Oct 31 Bait ban Unnamed stream between Diana and Prudhomme lakes Also see Prudhomme Lake (south of the Hwy 16 bridge)
DORIS LAKE	6-8	Lake trout fishing closed all year (any caught must be released)
DUNALTER LAKE (Irrigation Lake) ⇄	6-9	Electric motors only
"EAST GRIBBELL" CREEK	6-3	Closed all year Unnamed stream on Gribbell Island across Ursula Chan. from Goat Harbour
ECSTALL RIVER *	cw 6-11	Class II water all year; Steelhead Stamp not required unless angling for steelhead
ENDAKO RIVER	6-4	No fishing Nov 15-June 30
FRANÇOIS LAKE (ONLY near the outlet at the François Lake bridge; see map below)	6-4	No fishing Nov 15-May 31 Trout/char daily quota = 2, only 1 over 50 cm; release all rainbow trout Bait ban, single barbless hook; no set lining
FULTON RIVER *	6-8	Open June 16-Apr 30 each year Angling permitted in Fulton River opposite the spawning channels, as signed

NOTE: If a lake or stream is NOT listed here, then only the Provincial Regulations (pages 9 through 11) and the Regional Regulations (page 2 in this section) apply.
Check for any in-season changes at: www.env.gov.bc.ca/fw/fish/regulations/

REGION 6 - SKEENA

WATER-SPECIFIC REGULATIONS

MANAGEMENT UNIT (NOT ALL SHOWN ⇅)	EXCEPTIONS TO THE REGIONAL REGULATIONS	
GATCHO LAKE	6-1	Trout daily quota = 2; bait ban, single barbless hook
GITNADOIX RIVER *	cw 6-10	Class I water all year; Steelhead Stamp mandatory Apr 1-May 31
HAYS CREEK * (in Prince Rupert)	6-14	Closed all year above signs located below lower culvert near fish cannery Includes "Oldfield" Creek
HELENE LAKE	6-6	No fishing northwest of a line between signs on opposite shores of the outlet bay, Apr 1-June 30
HEVENOR ("Mcqueen") CREEK *	6-30	Open all year, bait may be used, trout/char daily quota = 2 (no minimum size)
HILL-TOUT LAKE	6-9	Closed all year
HONNA RIVER *	cw 6-13	Class II water Sept 1-Apr 30; Steelhead Stamp mandatory Dec 1-Apr 30
ISHKHEENICKH RIVER	6-14	See Ksi Hlginx River
ISKUT RIVER	6-21	No fishing downstream of Forest Kerr Canyon * , Apr 1-Apr 30 No powered boats between Natadesleen Lake and Kinaskan Lake
JOHANSON LAKE	6-18	Closed all year
KATHLYN LAKE	6-9	No powered boats
KHUTZEYMATEEN RIVER *	6-14	Closed all year
KILDALA RIVER *	6-3	Bait ban, June 1-Oct 15
KISPIOX RIVER *	cw 6-30	Bait ban (EXCEPT Hevenor Creek) No angling from boats, no powered boats Class II water Sept 1-Oct 31; Steelhead Stamp mandatory Sept 1-Oct 31 See Skeena River/Kispiox River confluence
KITEEN RIVER	6-15	Bait ban, Aug 1 - Dec 31
KITIMAT RIVER *	6-3	West half of river between signs near Kitimat Hatchery outfall closed all year Hatchery steelhead daily quota = 1; hatchery steelhead monthly quota = 10; Note: province-wide hatchery steelhead annual quota = 10 When you have caught & retained your daily steelhead quota from the Kitimat, you must stop fishing the Kitimat for the remainder of that day Bait ban, May 15-Aug 31 No powered boats
KITSEGUECLA RIVER	cw 6-9	Bait ban, Sept 1-Dec 31 Class II water all year * ; Steelhead Stamp mandatory Sept 1-Oct 31 *
KITSUMKALUM (Kalum) RIVER * cw	6-15	Class II water all year; Steelhead Stamp mandatory Dec 1-May 31 Bait ban Jan 1-Mar 15
KITWANGA RIVER *	cw 6-30	Bait ban, Sept 1-Dec 31 Class II water all year; Steelhead Stamp mandatory Sept 1-Oct 31
KLAHOWYA LAKE	6-20	No fishing within 100 m of outlet, May 15 - July 31 Trout/char daily and possession quotas = 2 (none over 50 cm); bait ban, single hook
KLOIYA RIVER	6-14	No fishing Aug 1-Oct 31 Bait ban
KLUATANTAN RIVER *	cw 6-18	Bait ban, Sept 1-Dec 31 Class II water all year; Steelhead Stamp mandatory Sept 1-Oct 31
KOWATUA CREEK	6-26	No fishing Dec 1-June 30 and Aug 20-Sept 15
KSI HLGINX RIVER	6-14	No fishing June 15-Sept 1 Formerly Ishkheenickh River
KSI SGASGINIST CREEK	6-15	No fishing July 1-Sept 15 Formerly Seaskinnish Creek
KSI SII AKS RIVER	6-14	No fishing above Nass Road bridge, Aug 1-Dec 31 Formerly Tseax River
KSI X'ANMAS RIVER *	cw 6-14	No fishing upstream from the lower bridge abutments, July 1-Aug 20 Class II water Apr 1-Sept 30; Steelhead Stamp mandatory Apr 1-May 31 Formerly Kwinamass River
KWINAGEESE RIVER *	cw 6-30	Class II water Sept 1-Oct 31; Steelhead Stamp mandatory Sept 1-Oct 31 Bait ban, Aug 1-Dec 31
KWINAMASS RIVER *	cw 6-14	See Ksi X'anmas River
LACHMACH RIVER	6-14	No fishing Sept 1-Oct 31 Bait ban
LAIDLAW LAKE	6-25 6-27	Lake trout daily quota = 3: EITHER none over 60 cm, OR only 1 over 60 cm and the other 2 must be 60 cm or less; Arctic grayling daily quota = 3 (only 1 over 35 cm); Northern pike daily quota = 5 (only 1 over 70 cm); whitefish daily quota = 5
LAKELSE RIVER *	cw 6-10	Cutthroat trout release above CNR bridge, Mar 1-Apr 30 Fly fishing only between Lakelse Lake and CNR bridge, Mar 1-May 31 Bait ban; no powered boats Note: The mouth of the river is designated by signs 1.7 km below Lakelse River logging road bridge Class II water all year; Steelhead Stamp mandatory Dec 1-May 31
LEAN-TO CREEK	6-15	Closed all year
MAMIN RIVER *	cw 6-13	No fishing above signs at 3rd bridge 10 km above tidal boundary, Feb 1-Apr 30 Class II water Sept 1-Apr 30; Steelhead Stamp mandatory Dec 1-Apr 30
MAXAN LAKE	6-9	Closed all year to fishing for lake trout
MCQUEEN CREEK *	6-30	See Hevenor Creek
MEZIADIN RIVER *	6-16	No fishing from signs at outlet of Meziadin Lake to Nass River, Jan 1-June 15 Bait ban, Aug 1-Dec 31

NOTE: If a lake or stream is NOT listed here, then only the Provincial Regulations (pages 9 through 11) and the Regional Regulations (page 2 in this section) apply. Check for any in-season changes at: www.env.gov.bc.ca/fw/fish/regulations/

REGION 6 - SKEENA

WATER-SPECIFIC REGULATIONS

MANAGEMENT UNIT (NOT ALL SHOWN ⇄)	EXCEPTIONS TO THE REGIONAL REGULATIONS		
MORICE RIVER *	CW	6-9	<p>No fishing from signs near outlet of Morice Lake to Gosnell Creek, Jan 1-Sept 30</p> <p>No fishing from Gosnell Creek to Lamprey Creek, Jan 1-Aug 31</p> <p>Bait ban (all parts)</p> <p>Fly fishing only from Gosnell Creek to Lamprey Creek, Sept 1-Sept 30</p> <p>No angling from boats, Aug 15-Dec 31 (all parts)</p> <p>Class II water Sept 1-Oct 31; Steelhead Stamp mandatory Sept 1-Oct 31</p>
MORLEY LAKE		6-25	Lake trout daily and possession quotas = 2 (only 1 over 90 cm, none between 60 cm and 90 cm); Arctic grayling daily and possession quotas = 4 (only 1 over 44 cm, none between 36 cm and 44 cm); Northern pike daily and possession quotas = 4 (only 1 over 100 cm, none between 70 cm and 100 cm); whitefish daily quota = 5
MURRAY LAKE		6-4	Lake trout release, Sept 15-Oct 31 Lake trout daily and possession quotas = 3 (only 1 over 50 cm), Nov 1-Sept 14
NATADESLEEN LAKE		6-21	Single barbless hook; no powered boats
NAGLICO LAKE		6-1	Trout daily quota = 2; bait ban, single barbless hook
NAKINA RIVER		6-26	No fishing July 20-Aug 15
NICHYESKWA CREEK		6-8	Closed all year
NILKITKWA LAKE		6-8	Fly fishing only, bait ban (EXCEPT dead fin fish may be used as bait when set lining; see page 9 in the Provincial Regulations) That section of flowing water between Babine and Nilkitkwa Lakes is designated Babine River (see map below); regional stream regulations apply
NITHI RIVER		6-4	No fishing Nov 15-June 30
OGSTON LAKE		6-6	No ice fishing Rainbow trout release; bait ban, single barbless hook
"OLDFIELD" CREEK		6-14	No fishing ; see Hays Creek
PALLANT CREEK *	CW	6-12	No fishing from signs approx. 100 m above the fish fence to the bridge downstream of the fence, Aug 1-Oct 31 Class II water Sept 1-Apr 30; Steelhead Stamp mandatory Dec 1-Apr 30
PETTRY LAKE		6-1	Trout daily quota = 2; bait ban, single barbless hook
PINKUT CREEK		6-8	No fishing downstream of the fish fence, Aug 15-Sept 15
PRUDHOMME LAKE		6-14	No fishing Aug 1-Oct 31
(South Of The Hwy 16 Bridge)			Trout/char daily quota = 2 (none under 30 cm); bait ban, single barbless hook
RANCHERIA RIVER'S TRIBUTARIES		6-25	Arctic grayling daily quota = 3 (only 1 over 35 cm); whitefish daily quota = 5
ROSS LAKE	➡	6-9	Electric motors only
SEASKINNISH CREEK		6-15	See Ksi Sgaginist Creek
"SEELEY" CREEK (outlet of Seeley Lake)		6-9	Open all year, trout/char daily quota = 2 (no minimum size)
SEELEY LAKE		6-9	Electric motors only
SEYMOUR LAKE		6-9	No powered boats
SIX MILE LAKE (Ross Lake Park)		6-15	Electric motors only
SILVERTHORNE (Erickson) LAKE		6-9	No fishing within 50 m of the outlet, May 1-June 30
SKEENA RIVER/KISPIOX RIVER CONFLUENCE		6-8	Bait ban; no angling from boats Waters within 3 white fishing boundary signs located at the confluence of the Skeena and Kispiox rivers
SKEENA RIVER (Mainstem Only)	CW	6-10	There are two separate Class II waters on the Skeena River (non-residents require separate licences describing which section they are fishing): (a) from Exchamsiks River to 1.5 km above Kitsumkalum River (known as "Skeena 2"), July 1-Sept 30; and (b) upstream of 1.5 km above Zymoetz River (known as "Skeena 4"), July 1-Oct 31; Steelhead Stamp not required for either section unless fishing for steelhead
SQUIRREL LAKE		6-1	Trout daily quota = 2; bait ban, single barbless hook
STATION CREEK		6-9	Open all year; trout/char daily quota = 2 (no minimum size)
SUSKWA (Bear) RIVER *	CW	6-8	Bait ban Class II water all year; Steelhead Stamp mandatory Sept 1-Oct 31
SUSTUT LAKES		6-18	Closed all year
SUSTUT RIVER *	CW	6-18	Closed all year above BCR bridge at Bear River mouth Bait ban, Sept 1-Dec 31 Class I water Sept 1-Oct 31; Steelhead Stamp mandatory Sept 1-Oct 31
SWIFT RIVER *		6-25	Arctic grayling daily quota = 3 (only 1 over 35 cm); whitefish daily quota = 5
TAGISH LAKE		6-27	Lake trout daily and possession quotas = 2 (only 1 over 90 cm, none between 60 cm and 90 cm); Arctic grayling daily and possession quotas = 4 (only 1 over 44 cm, none between 36 cm and 44 cm); Northern pike daily and possession quotas = 4 (only 1 over 100 cm, none between 70 cm and 100 cm); whitefish daily quota = 5
TAHLTAN RIVER *		6-22	No fishing Dec 1-June 30
TAKYSIE LAKE		6-4	No fishing northwest of a line between signs on opposite shores just north of Takysie Lake Settlement, Mar 1-May 31
TATSAMENIE LAKE'S OUTLET STREAMS		6-26	No fishing between Tatsamenie Lake and Tatsatua Creek, Dec 1-June 30 and Aug 20-Sept 15
TCHESINKUT LAKE		6-4	Release lake trout all year EXCEPT during months of February and July (when regional quotas apply) Single barbless hook
TESLIN LAKE		6-25	Lake trout daily and possession quotas = 1 (none between 60 cm and 90 cm); Arctic grayling daily and possession quotas = 4 (only 1 over 44 cm, none between 36 cm and 44 cm); Northern pike daily and possession quotas = 4 (only 1 over 100 cm, none between 70 cm and 100 cm); whitefish daily quota = 5
TLELL RIVER *	CW	6-13	Cutthroat trout release Class II water Sept 1-Apr 30; Steelhead Stamp mandatory Dec 1-Apr 30 Tidal water regulations apply to waters below tidal boundary sign located 1.5 km above Hwy 16 bridge - check B.C. Tidal Waters Sport Fishing Guide (URL)
TOMS LAKE		6-1	Trout daily quota = 2; bait ban, single barbless hook
TRIUMPH RIVER		6-3	No fishing Nov 1-May 31
TSEAX RIVER		6-14	See Ksi Sii Aks River
TWO MILE CREEK		6-8	Open all year; bait may be used; trout/char daily quota = 2 (no minimum size)

NOTE: If a lake or stream is NOT listed here, then only the Provincial Regulations (pages 9 through 11) and the Regional Regulations (page 2 in this section) apply. Check for any in-season changes at: www.env.gov.bc.ca/fw/fish/regulations/

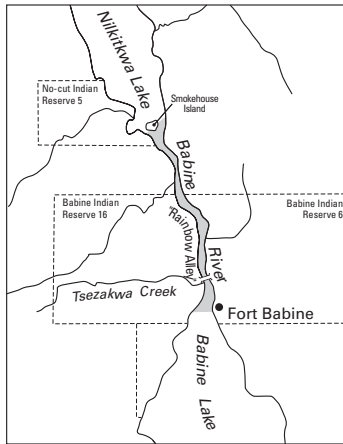
REGION 6 - SKEENA

WATER-SPECIFIC REGULATIONS

MANAGEMENT UNIT (NOT ALL SHOWN ⇄)		EXCEPTIONS TO THE REGIONAL REGULATIONS
UNNAMED LAKE (approx. 500 M south of Natakuz Lake)	6-1	No ice fishing; rainbow trout release; bait ban, single barbless hook Located approx. 6.25 km S/SE of Yellow Moose Lake and approx. 6.25 km W/SW of Chedakuz Arm
WAHLA LAKE	6-2	Rainbow trout daily quota = 1 (none over 50 cm)
WEST ROAD ("Blackwater") RIVER'S TRIBUTARIES	6-1	Trout daily quota = 1; artificial fly only, bait ban For regulations on the mainstem of the West Road River, see Region 5
YAKOUN RIVER *	CW 6-13	No fishing from Yakoun Lake downstream 13 km to signs, Oct 1-Apr 30 Cutthroat trout release; no powered boats Class II water Sept 1-Apr 30; Steelhead Stamp mandatory Dec 1-Apr 30
ZYMOETZ (Copper) RIVER *	CW 6-9	Closed all year from McDonell Lake downstream 3 km to signs Closed all year between signs in Zymoetz Canyon No fishing above the sign at the transmission line crossing (below Zymoetz Canyon), Jan 1-June 15 Bait ban Above Limonite Creek: Class I water Sept 1-Oct 31 and Steelhead Stamp mandatory Sept 1-Oct 31 Below Limonite Creek: Class II water Sept 1-Oct 31 and Steelhead Stamp mandatory Sept 1-Oct 31

NOTE: If a lake or stream is NOT listed here, then only the Provincial Regulations (pages 9 through 11) and the Regional Regulations (page 2 in this section) apply. Check for any in-season changes at: www.env.gov.bc.ca/fw/fish/regulations/

NILKITKWA LAKE MAP



FRANÇOIS LAKE MAP

