

# REGION 7A - Omineca

The Management Unit boundaries indicated on the map below are shown only as a reference to help anglers locate waters in the region. For more precise Management Unit boundaries, please consult one of the commercial Recreational Atlases available for B.C.



## Zone A (Omineca) Fish and Wildlife Regional Office

(250) 565-6135  
4051-18th Ave., Prince George, B.C. V2N 1B3

## R.A.P.P.

**Report All Poachers and Polluters**  
Conservation Officer 24 Hour Hotline  
1-877-952-RAPP (7277)  
Cellular Dial #7277  
Please refer to page 12 in the Provincial  
Regulations for more information, or go to:  
[www.rapp.bc.ca](http://www.rapp.bc.ca)

## Conservation Officer Service Field Offices

Please call one of the numbers below  
for recorded information or to make an  
appointment:

Mackenzie: (250) 997-6555  
Prince George: (250) 565-6140  
Vanderhoof: (250) 567-6304

## ICE FISHING HUTS: WARNING!

Failure to remove ice fishing huts  
from lakes before spring breakup is  
an offence under the **Environmental  
Management Act**.

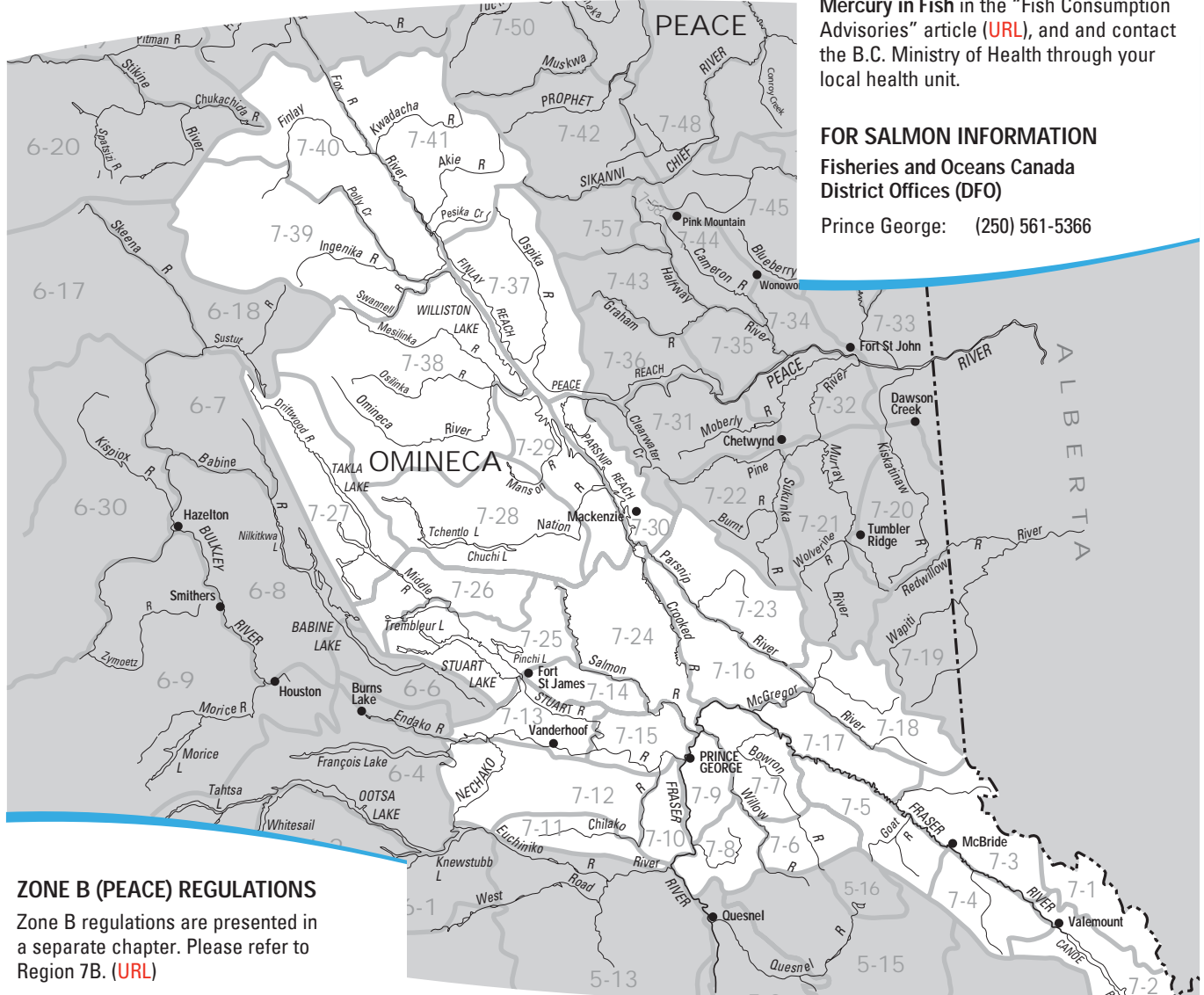
## MERCURY WARNING

Mercury levels in **bull trout (Dolly Varden)**  
from **Williston Lake and tributaries**  
and in **lake trout** from **Pinchi Lake** may  
be high. Normal consumption is not a  
significant hazard to human health, but high  
consumption may be.

For further information, please read  
**Mercury in Fish** in the "Fish Consumption  
Advisories" article ([URL](#)), and contact  
the B.C. Ministry of Health through your  
local health unit.

## FOR SALMON INFORMATION

Fisheries and Oceans Canada  
District Offices (DFO)  
Prince George: (250) 561-5366



**ZONE B (PEACE) REGULATIONS**  
Zone B regulations are presented in  
a separate chapter. Please refer to  
Region 7B. ([URL](#))

# REGION 7A - Regional Regulations

## GENERAL ZONE A RESTRICTIONS

**Set lining is permitted in the lakes of Zone A** (see tables for exceptions). Set lines are restricted to one line with a single hook with a gap of not less than 3 cm (see page 9 in the Provincial Regulations). All set lines must be marked with the angler's name, address and telephone number. See "Rules on Bait Usage" (page 9 in the Provincial Regulations).

**No fishing (spring closure):** in any stream of Zone A, Apr. 1 to June 30. (See tables for exceptions).

**Single barbless hook:** must be used in all streams of Zone A, all year.

**Bait ban:** applies to all streams of Zone A, all year. See page 9 in the Provincial Regulations for details. (See tables for exceptions).

## OMINECA WHITE STURGEON

White sturgeon from the Nechako, Stuart and the Upper Fraser watersheds have been listed as **endangered** under the *Species at Risk Act* (SARA). It is now illegal to fish for, kill, harm, or harass white sturgeon in Omineca Region. Recovery actions have been underway since 2006; more than 15,000 juvenile sturgeon have now been released into the Nechako River to help rebuild this critically endangered population. Habitat research is progressing with the release of more the 250,000 larval sturgeon in 2008 to help understand habitat needs and how to restore rearing areas for this critical life stage.

Help from the public will also be necessary for recovery and the Nechako White Sturgeon Recovery Initiative requests that you report date and location of **all** sightings or incidental captures, particularly in the Upper Nechako, Fraser Lake and Stuart/Takla Watersheds. If you observe or accidentally catch a sturgeon (or would like more information) please call the Ministry of Environment at 250-614-9924, or go to either of these web sites:

[www.nechakowhitesturgeon.org](http://www.nechakowhitesturgeon.org) or [www.env.gov.bc.ca/omineca/esd/faw/sturgeon](http://www.env.gov.bc.ca/omineca/esd/faw/sturgeon)



Conservation-cultured juvenile sturgeon recaptured at age two.  Mickey McDonald

## ZONE A DAILY CATCH QUOTAS

(See tables for exceptions)

**Trout/char:** 5, but not more than

- 1 over 50 cm
- 2 from streams
- 3 lake trout
- 1 bull trout (Dolly Varden)

**NOTE: Bull trout (Dolly Varden)** may only be retained Oct. 16 to Aug. 14. These fish may only be taken from lakes and only 30 - 50 cm in length. See below.

**And you must release:**

**Bull trout (Dolly Varden):**

- from streams, all year
- from lakes, Aug. 15 to Oct. 15

**And you must release:**

**Lake trout:**

- of any size, Sept. 15 to Oct. 31
- under 30 cm all year

**Arctic grayling: catch and release only**

**Burbot: 5**

**Kokanee: 10** (none from streams)

**White Sturgeon: CLOSED TO ALL FISHING**

**Whitefish: 15** (all species combined)

## DAILY AND ANNUAL CATCH QUOTAS FOR SALMON

Please refer to the NOTICE on page 4 in the Provincial Regulations for Salmon Regulations.

## POSSESSION QUOTAS

Possession quotas = 2 daily quotas for most species. See tables for exceptions.

**Lake Trout:** possession quota = 1 daily quota.

**Bull Trout (Dolly Varden):** possession quota = 1 daily quota.

## TABLE LEGEND

See the following tables on the next page for exceptions and additional regulations on specific waters.

- ➡ Stocked Lake (not all stocked lakes listed, see article on stocking ([URL](#)))
- CW** Classified Waters Licence required to fish Class I or Class II waters, see p. 8 in the Provincial Regulations
- \* Including tributaries
- ⊛ Age Restricted Waters
- ❖ For Management Unit information see page 5 in the Provincial Regulations

# REGION 7A - OMINECA

## WATER-SPECIFIC REGULATIONS

MANAGEMENT UNIT (NOT ALL SHOWN ⇄)	EXCEPTIONS TO THE REGIONAL REGULATIONS
AIRLINE LAKE	7-28 No fishing Nov 1-Apr 30 Lake trout release
AMANITA LAKE	7-17 Electric motors only
ARCTIC LAKE	7-23 No fishing Nov 1-Apr 30 Lake trout release; no set lines
ATTICHIKA CREEK	7-39 Closed all year 500 m upstream & downstream of the Thorn Creek confluence Closed all year 500 m upstream & downstream of the Kemess Creek confluence
BEAR LAKE (Crooked River Park)	7-16 No powered boats
BEAVERLEY CREEK	7-10 Exempt from Spring Closure and from bait ban ⊕ Age restriction (see page 5 in the Provincial Regulations)
BEDNESTI LAKE	7-12 No fishing Nov 1-Apr 30 Lake trout release; no set lines
BLACKWATER RIVER	7-10 See West Road River
BOWRON RIVER	7-7 Exempt from Spring Closure; no rainbow trout under 30 cm
BYERS LAKE	7-15 Trout/char daily quota = 2
CANOE RIVER	7-2 Exempt from Spring Closure; rainbow trout release Apr 1-June 30
CARINA LAKE	7-38 No fishing Nov 1-Apr 30 Lake trout release; no set lines
CARP LAKE	7-24 No fishing from marker buoys to the mouth of the McLeod River, Apr 1-June 30
CHICHOUYENILY CREEK	7-30 Exempt from Spring Closure; also EXEMPT from bait ban below signs near its mouth
CHIEF GRAY (Bitch) LAKE	7-12 No fishing Nov 1-Apr 30 Rainbow trout release; bait ban, single barbless hook
CHUBB LAKE	7-10 Engine power restriction - 7.5 Kw (10 hp)
CHUCHI LAKE	7-28 No fishing Nov 1-Apr 30 Lake trout daily quota = 2; no set lines
CLUCULZ LAKE	7-12 Lake trout release; no set lines
CROOKED RIVER	7-24 No fishing downstream (north) of the 200 Road bridge, Apr 1-June 30 Rainbow trout release and exempt from Spring Closure upstream (south) of the 200 Road bridge, Apr 1-June 30 Engine power restriction - 7.5 Kw (10 hp)
CUNNINGHAM LAKE	7-25 No fishing Nov 1-Apr 30 Lake trout possession quota = 2 (only one over 50 cm); no set lines
DAHL LAKE	7-12 No powered boats
DAVIS BAY (in Findlay Reach of Williston Lake)	7-37 Closed all year within a 500 m radius of the Davis Forest Service Road bridge. See Davis River
DAVIS RIVER *	7-37 Closed all year
DEM LAKE	7-25 No fishing Nov 1-Apr 30 Lake trout release; no set lines
DINA CREEK	7-30 Closed all year
DINA LAKE #1	7-30 Engine power restriction - 7.5 Kw (10 hp)
DINA LAKE #2	7-30 Electric motors only
EAGLET LAKE	7-7 Burbot daily quota = 1
EAST HAUTETE LAKE	7-27 No fishing Nov 1-Apr 30 Lake trout release; no set lines
ECHO LAKE	7-13 Brook trout daily quota = 2; no powered boats
EENA LAKE	7-15 Electric motors only
EMERALD LAKE	7-15 No powered boats
ENDAKO RIVER	7-12 No fishing Nov 15-June 30
EVERETT LAKE	7-5 No fishing Nov 1-Apr 30 Rainbow trout daily quota = 1 (none over 40 cm); bait ban, single barbless hook
EYE LAKE	7-26 No fishing Nov 1-Apr 30 Lake trout release
FERGUSON LAKE	7-15 No powered boats
FINLAY RIVER	7-40 Exempt from Spring Closure
FRASER LAKE	7-13 Lake trout daily quota = 1 (none under 60 cm)
FRASER RIVER	7-9 Exempt from Spring Closure; also EXEMPT from bait ban above Cottonwood River
FRIDAY LAKE	7-27 No fishing Nov 1-Apr 30 Lake trout release
GAGNON CREEK	7-30 Exempt from Spring Closure below signs near its mouth
GANTHAZ LAKE	7-30 Electric motors only
GOAT RIVER *	7-5 No fishing upstream of the Macleod Creek confluence, including Macleod Cr *, Sept 1-June 30
HART LAKE (Crooked River Park)	7-16 No fishing Nov 1-Apr 30 Rainbow trout daily quota = 1 (none over 40 cm); bait ban, single barbless hook; electric motors only
HART LAKE (Fort St. James)	7-25 No fishing Nov 1-Apr 30 Rainbow trout release; bait ban, single barbless hook
HATDUDATEHL LAKE	7-26 No fishing Nov 1-Apr 30 Lake trout release; no set lines
HAUTETE LAKE	7-27 No fishing Nov 1-Apr 30 Lake trout release; no set lines
HEDRICK LAKE	7-18 No fishing Nov 1-Apr 30 Trout/char release; bait ban, single barbless hook
HOBSON LAKE	7-12 No fishing Nov 1-Apr 30 Rainbow trout release; bait ban, single barbless hook

**NOTE:** If a lake or stream is NOT listed here, then only the Provincial Regulations (pages 9 through 11) and the Regional Regulations (page 2 in this section) apply. Check for any in-season changes at: [www.env.gov.bc.ca/fw/fish/regulations/](http://www.env.gov.bc.ca/fw/fish/regulations/)

# REGION 7A - OMINECA





## WATER-SPECIFIC REGULATIONS

MANAGEMENT UNIT (NOT ALL SHOWN ↕)	EXCEPTIONS TO THE REGIONAL REGULATIONS	
HUMPHREY LAKE	7-38	No fishing Nov 1-Apr 30 Lake trout release; no set lines
INDATA LAKE	7-28	No fishing Nov 1-Apr 30; Lake trout possession quota = 2 (only one over 50 cm); no set lines
ISPAH LAKE	7-7	No powered boats
JOHN'S LAKE	7-38	No fishing Nov 1-Apr 30 Bull trout release
KEMESS CREEK	7-39	Closed all year from Attichka Creek to a point 500 m upstream
KINBASKET LAKE'S TRIBUTARIES	7-2	See definition of "stream mouth", page 13 in the Provincial Regulations
KWITZIL LAKE	7-12	No powered boats
LA SALLE LAKES	7-3	No powered boats
LAVOIE LAKE	7-11	No fishing Nov. 1-Apr. 30
	7-3	Rainbow trout daily quota=3, (none over 40 cm); bait ban, single barbless hook
LITTLE LOST LAKE	7-3	No fishing Nov 1-Apr 30 Rainbow trout daily quota = 2; bait ban, single barbless hook
"LITTLE TOMAS" LAKE	7-25	No fishing Nov 1-Apr 30 Lake trout release; no set lines; unnamed lake approx. 300 m downstream of Tomas Lake
"LOWER BEAVERPOND" LAKE	7-38	No fishing Nov 1-Apr 30 Lake trout release; no set lines Lowermost of the two Beaverpond Lakes
LYNX LAKE	7-15	Electric motors only
"MACKENZIE LAKE #2 EAST"	7-10	Rainbow trout daily quota = 2 Most southeasterly of two unnamed lakes ("Mackenzie #1 West" and "Mackenzie #2 East"), located approx. 6 km SE of Erickson Lake
MACLEOD CREEK *	7-5	No fishing Sept. 1-June 30
MANSON RIVER	7-28	Rainbow trout release
MCGREGOR RIVER	7-16	Exempt from Spring Closure
MCLENNAN RIVER	7-4	No fishing Apr 1-Aug 31
MCLEOD RIVER	7-24	Artificial fly only, from Carp Lake to War Falls (excluding War Lake)
MCMILLAN CREEK	7-15	Exempt from Spring Closure and from bait ban; ⚡ Age restriction (see page 5 in the Provincial Regulations)
MIDDLE RIVER	7-26	Exempt from Spring Closure
MORFEE LAKE (South)	7-30	Electric motors only
"MT. MILLIGAN" LAKE	7-28	No fishing Nov. 1-Apr. 30 Rainbow trout release; bait ban, single barbless hook; unamed lake located approx. 7.5 km S/SE of Mt. Milligan EXEMPT from bait ban; ⚡ Age restriction (see page 5 in the Provincial Regulations)
MUGAHA CREEK	7-30	
NAKINILERAK LAKE	7-27	No fishing Nov. 1-Apr. 30 Lake trout possession quota = 2 (only one over 50 cm); no set lines
NARROW LAKE	7-7	No set lines
NATION ARM (Williston Lake)	7-30	No fishing west of a line between two boundary signs approx. 500 m downstream (east) of the Nation River bridge on the Finlay Forest Service Road., Apr 1-June 30 Bull trout release west of a line between two boundary signs approx. 500 m downstream of the Nation River bridge on the Finlay Forest Service Road (when open)
NAUTLEY RIVER	7-13	Exempt from Spring Closure
NATION RIVER	7-30	See Nation Arm (Williston Lake)
NECHAKO RIVER	7-12	Exempt from Spring Closure Rainbow trout release from Cheslatta River to a boundary sign 5 km downstream and no rainbow trout under 35 cm from said sign downstream to Hwy #27 Bridge No fishing for white sturgeon Exempt from bait ban downstream of Foothills Boulevard bridge in Prince George
NULKI LAKE	7-12	No fishing west of a line between signs on lakeshore near mouth of Corkscrew Creek, Apr 1-May 31
OPATCHO LAKE	7-9	No fishing Nov 1-Apr 30 Rainbow trout daily quota = 1 (none over 40 cm); bait ban, single barbless hook
PACIFIC LAKE	7-16	No fishing Nov 1-Apr 30 Lake trout release; no set lines
PARSNIP RIVER	7-23	Exempt from Spring Closure
PINCHI LAKE	7-25	NOTE: see mercury warning, page 1 in this section
PINKERTON LAKE	7-7	No fishing Nov 1-Apr 30 Rainbow trout daily quota = 3; bait ban, single barbless hook
PORTAGE LAKE	7-16	No fishing Nov 1-Apr 30 Lake trout release; no set lines
PTARMIGAN CREEK	7-5	Closed all year from falls to quarry bridge
PURVIS LAKE	7-28	No fishing Nov 1-Apr 30 Lake trout release; no set lines
SALMON RIVER	7-15	Exempt from Spring Closure
SHANDY LAKE	7-5	Electric motors only
SHERE LAKE	7-4	Brook trout daily quota = 2
SLENDER LAKE	7-6	No set lines
SLIM LAKE	7-5	Electric motors only
SQUARE LAKE	7-16	No powered boats In Crooked River Provincial Park (formerly "Squaw" Lake)
"SQUAW" LAKE	7-16	See Square Lake
STALK LAKES	7-39	Bait ban

**NOTE:** If a lake or stream is NOT listed here, then only the Provincial Regulations (pages 9 through 11) and the Regional Regulations (page 2 in this section) apply. Check for any in-season changes at: [www.env.gov.bc.ca/fw/fish/regulations/](http://www.env.gov.bc.ca/fw/fish/regulations/)

# REGION 7A - OMINECA

## WATER-SPECIFIC REGULATIONS

MANAGEMENT UNIT (NOT ALL SHOWN ⇄)		EXCEPTIONS TO THE REGIONAL REGULATIONS
STELLAKO RIVER	<b>cw</b> 7-12	Open June 1-Nov 14; Class II water * when open (Steelhead Stamp not required) Rainbow trout release Fly fishing only between signs approx. 250 m and 4 km below the bridge near the François Lake outlet No powered boats from François Lake to the falls See Region 6 tables for restrictions applying to François Lake's outlet area
STONY LAKE	7-6	No set lines
STUART RIVER	7-15	Exempt from Spring Closure; rainbow trout release, Apr 1-June 30
SWIFT CREEK	7-2	No fishing Apr 1-Aug 31 Closed all year from upstream side of weir to CNR bridge in Valemount
TATLATUI LAKE	7-39	Rainbow trout daily quota = 2
TCHENTLO LAKE	7-28	No fishing Nov 1-Apr 30 Lake trout possession quota = 2 (only one over 50 cm); no set lines
TEBBUTT LAKE	 7-13	No fishing Nov 1-Apr 30 Brook trout release; bait ban, single barbless hook
THORN CREEK	7-39	Closed all year from Attichika Creek to a point 500 m upstream
TOMAS LAKE	7-25	No fishing Nov 1-Apr 30 Lake trout release; no set lines
TOMIAS LAKE	7-38	No fishing Nov 1-Apr 30 Lake trout release; no set lines
TRAPPING LAKE	 7-9	Engine power restriction - 7.5 Kw (10 hp)
TSAYTA LAKE	7-28	No fishing Nov 1-Apr 30 Lake trout possession quota = 2 (only one over 50 cm); no set lines
TSITNIZ LAKE	7-9	No powered boats
TUMUCH LAKE	7-5	Electric motors only
VIVIAN LAKE	 7-15	Engine power restriction - 7.5 Kw (10 hp)
WAR LAKE	7-24	Trout/char daily quota = 4 (not more than 3 char)
WESTON CREEK	7-30	Exempt from Spring Closure below signs near its mouth
WEST ROAD ("BLACKWATER") RIVER'S TRIBUTARIES	7-10	Trout daily quota = 1 (none under 30 cm); artificial fly only For regulations on the mainstem of the West Road River, see Region 5 ( <a href="#">URL</a> )
WHITEFISH LAKE	7-25	No fishing Nov 1-Apr 30 Lake trout release; no set lines
WICHEEDA LAKE	7-16	No fishing Nov 1-Apr 30 Rainbow trout daily quota = 3; bait ban, single barbless hook
WILLISTON LAKE (in Zone A)	7-30 7-37 7-38	No rainbow trout under 30 cm; kokanee daily quota = 4 See Nation Arm REMINDER: Arctic grayling release from tributaries See mercury warning on page 1 in this section, and definition of "stream mouth" on page 13 in the Provincial Regulations
WILLOW RIVER	7-9	Exempt from Spring Closure; no rainbow trout under 30 cm
WINDY POINT LAKE	 7-24	Electric motors only
WITCH LAKE	7-28	No fishing Nov 1-Apr 30 Lake trout release; no set lines

**NOTE:** If a lake or stream is NOT listed here, then only the Provincial Regulations (pages 9 through 11) and the Regional Regulations (page 2 in this section) apply. Check for any in-season changes at: [www.env.gov.bc.ca/fw/fish/regulations/](http://www.env.gov.bc.ca/fw/fish/regulations/)