

REGION 7B - Peace

The Management Unit boundaries indicated on the map below are shown only as a reference to help anglers locate waters in the region. For more precise Management Unit boundaries, please consult one of the commercial Recreational Atlases available for B.C.

Conservation Officer Service Field Offices

Please call one of the numbers below for recorded information or to make an appointment:

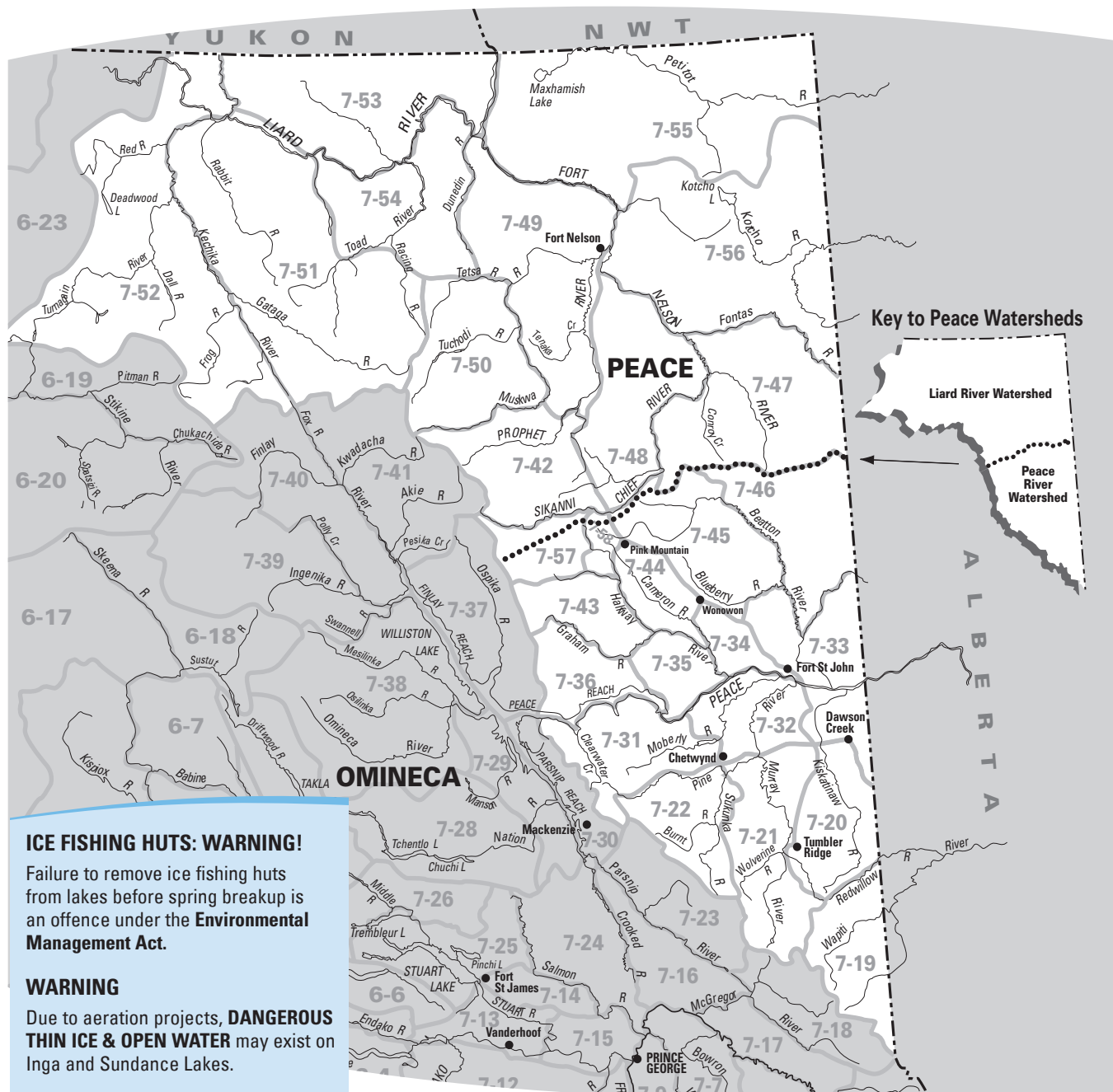
Chetwynd: (250) 788-3611
 Dawson Creek: (250) 784-2304
 Fort Nelson: (250) 774-3547
 Fort St. John: (250) 787-3225

Zone B (Peace) Fish and Wildlife Regional Office

(250) 787-3411
 Rm 400, 10003-110th Ave.,
 Fort St. John, B.C. V1J 6M7

R.A.P.P.

Report All Poachers and Polluters
 Conservation Officer 24 Hour Hotline
 1-877-952-RAPP (7277)
 Cellular Dial #7277
 Please refer to page 44 for more information
www.rapp.bc.ca



ICE FISHING HUTS: WARNING!

Failure to remove ice fishing huts from lakes before spring breakup is an offence under the **Environmental Management Act**.

WARNING

Due to aeration projects, **DANGEROUS THIN ICE & OPEN WATER** may exist on Inga and Sundance Lakes.

REGION 7B - Peace

REGIONAL REGULATIONS

GENERAL ZONE B RESTRICTIONS

Single barbless hook: must be used in all streams of Zone B, all year.

Bait ban: applies to all streams of Zone B, all year.

Fin fish: (as defined on page 9 under "Rules on Bait Usage") may not be used as bait in any waters of Zone B.

Set lining: is not permitted in Zone B.

ZONE B DAILY CATCH QUOTAS

(See tables for exceptions)

Trout/char: 5, but not more than

- 1 over 50 cm
- 2 from streams
- 2 **lake trout**
- 1 **bull trout**

NOTE: **Bull trout** may only be retained from Oct. 16 to Aug. 14. These fish may only be from the Liard River watershed (or other specified waters) and only 30-50 cm in length. See below.

And you must release:

- **Rainbow trout** of any size from streams, May 1 to June 15
- **Lake trout** under 30 cm
- **Lake trout** of any size, Sept. 15 to Oct. 31
- **Bull trout** from the Liard River watershed Aug. 15 to Oct. 15, and from the Peace River watershed all year (See tables for exceptions)

Arctic grayling: 2

(none under 30 cm and only 1 over 45 cm)

And you must release:

- any size, May 1 to June 15
- all from Williston Lake and its tributaries

Burbot: 5

Goldeye: 10

Inconnu: 1

Kokanee: 4 (none from streams)

Northern pike: 3 (only 1 over 90 cm)

Walleye: 3 (only 1 over 70 cm)

And you must release:

- all from streams, April 1 to May 15

Whitefish: 15 (all species combined)

Yellow perch: 5

POSSESSION QUOTAS

Possession quotas = 2 daily quotas for most species. See tables for exceptions.

Exception: possession quota = 1 daily quota for **Arctic grayling**, 1 daily quota for **bull trout**, and 1 daily quota for **lake trout**.

NOTE: Bull trout and Dolly Varden are two distinct species. Since only bull trout are found in the Peace Region, we have removed references to Dolly Varden here.

TABLE LEGEND

See the following tables for exceptions and additional regulations on specific waters.



- Stocked Lake (not all stocked lakes listed, see p. 83)
- * Including tributaries

Family Fishing Waters

Catch up with your kids!

Check out the Family Fishing Waters at

www.env.gov.bc.ca/fw/fish/regulations/family-fishing

NOTE: Check website (page 1) for closure dates in 2012/2013 season.

BACKCOUNTRY
"Helping you enjoy the great outdoors"

Visit our website www.backcountryfsj.com to enter on-line for a chance to win a Bradley smoker package.

Northeast BC's Angling Source
10120 Alaska Road, Fort St. John, BC, V1J 1A8 250-785-1461

REGION 7B - Peace

WATER-SPECIFIC REGULATIONS

MANAGEMENT UNIT (NOT ALL SHOWN - SEE PAGE 5)		EXCEPTIONS TO THE REGIONAL REGULATIONS
ANDY BAILEY (Jackfish) LAKE	7-48	No powered boats
BEATTIE LAKE	7-57	No fishing Nov 1- Apr 30 Trout daily quota = 1 (none over 50 cm); bait ban, single barbless hook
BELCOURT LAKE	7-19	No fishing Nov 1-Apr 30
BOOT LAKE	7-20	Engine power restriction - 7.5 Kw (10 hp)
BOULDER LAKE	7-22	No powered boats; situated at the head of Boulder Creek
BURNT RIVER *	7-22	Release all fish; artificial fly only
CAMERON LAKES	7-31	See North and South Cameron Lakes
CARBON LAKE	7-31	No fishing Nov 1-Apr 30 Lake trout daily and possession quotas = 1 (none under 30 cm) Engine power restriction - 7.5 Kw (10 hp)
CECIL LAKE	7-33	No powered boats
CECILIA CREEK	7-19	Closed all year
CECILIA LAKE	7-19	No fishing Nov 1-Apr 30 Trout/char daily quota = 2 (none under 40 cm); bait ban, single barbless hook
CHARLIE LAKE	7-33	Walleye daily and possession quotas = 3; northern pike daily and possession quotas = 3
"CHINAMAN" LAKE	7-35	See Chunamun Lake
CHOWADE RIVER *	7-43	No fishing upstream of the Horseshoe Road bridge, Aug 15-Oct 15
CHUNAMUN LAKE	7-35	No fishing Nov 1-Apr 30 Rainbow trout daily and possession quotas = 2 (none over 50 cm); bait ban, single barbless hook
CLEARWATER CREEK	7-31	Release all fish
CLEARWATER LAKE	7-31	No fishing Nov 1-Apr 30 Release all fish, May 1-Oct 31
DENETIAH CREEK	7-52	No fishing July 1-July 15
DENETIAH LAKE	7-52	Bait ban
DIMSDALE CREEK	7-19	Closed all year
DIMSDALE LAKE	7-19	Trout/char release; bait ban, single barbless hook
DINOSAUR LAKE (Reservoir Below W.A.C. Bennett Dam)	7-31	Closed all year from W.A.C. Bennett Dam to 100 m south of Gething Creek, and between the anti-vortex dyke and Peace Canyon Dam * No trout/char under 25 cm (release all bull trout); single barbless hook
FERN LAKE	7-42	No fishing June 1-July 15 Rainbow trout daily quota = 2 (none over 50 cm); bait ban
GETHING CREEK *	7-31	Closed all year
GWILLIM LAKE	7-21	Lake trout daily quota = 2 (none under 40 cm or over 60 cm); bait ban, single barbless hook
HALFWAY RIVER	7-34	No fishing from confluence with Peace River to boundary sign approximately 5 km upstream, March 1-June 30
HEART LAKE	7-22	Trout/char daily quota = 1 (none under 35 cm) Electric motors only
INGA LAKE	7-34	Engine power restriction - 7.5 Kw (10 hp) WARNING! Dangerous thin ice due to aeration!
JOHNSON CREEK *	7-31	Closed all year
KAKWA LAKE	7-19	No fishing Nov 1-Apr 30 Trout/char daily quota = 2 (none under 40 cm)
KAKWA RIVER	7-19	Closed all year
LETAIN LAKE	7-52	No fishing within 100 m of sign at outlet, May 15-July 31 Rainbow trout daily and possession quotas = 2 (none over 50 cm); bait ban, single hook
LIARD RIVER WATERSHED (see Map on page 1 in this section)	7-53	Bull trout release from all lakes & streams, Aug 15-Oct 15 Bull trout daily and possession quotas = 1 (none under 30 cm or over 50 cm) from all lakes & streams, Oct 16-Aug 14
LOWER BLUE LAKE	7-21	No fishing Nov 1-Apr 30 Bull trout daily & possession quotas = 1 (none under 40 cm or over 60 cm), May 1-Aug 14 Bait ban, single barbless hook
MOBERLY LAKE	7-31	No fishing Sept 15-Oct 31; lake trout release Nov 1-Sept 14
MONKMAN LAKE	7-21	No fishing Nov 1-Apr 30 Bull trout daily and possession quotas = 1 (none under 40 cm or over 60 cm), May 1-Aug 14 Bait ban, single barbless hook
MUNCHO LAKE	7-51	Lake Trout daily quota = 2 (none under 40 cm and only 1 over 60 cm); single barbless hook
MURRAY RIVER	7-21	Arctic grayling release from Kinuseo Falls to signs about 2 km downstream
NORTH CAMERON LAKE	7-31	No powered boats
ONE ISLAND LAKE	7-20	See ice hut warning, page 1 in this section
PEACE RIVER	7-31	Kokanee daily quota = 4 Arctic grayling EXEMPT from the May 1-June 30 release Closed all year between Peace Canyon Dam and Hwy #29 bridge; No fishing from mouth of Halfway River to boundary signs approx. 5 km upstream and 5 km downstream, March 1-June 30
PINE RIVER *	7-32	Release all fish upstream of the Hasler Road bridge
RADAR LAKE	7-20	No powered boats
RAINBOW LAKES	7-52	No fishing within 100 m of sign at outlet, May 15-July 31 Rainbow trout daily & possession quotas = 2 (none over 50 cm); bait ban, single hook
ROBB LAKE	7-57	Bull trout daily quota = 1 (any size)

NOTE: If a lake or stream is NOT listed here, then only the Provincial Regulations (pages 9-11) and the Regional Regulations (page 41) apply. New restrictions are highlighted in blue. Check for any in-season changes at: www.env.gov.bc.ca/fw/fish

MANAGEMENT UNIT
(NOT ALL SHOWN - SEE PAGE 5)

EXCEPTIONS TO THE REGIONAL REGULATIONS

SIMPSON LAKE	7-31	No fishing in lake Nov 1- Apr 30; tributaries closed all year Trout/char daily quota = 2 (none over 40 cm); bait ban, single barbless hook
SOUTH CAMERON LAKE	7-31	No powered boats
STEWART LAKE	7-32	Engine power restriction - 7.5 Kw (10 hp)
STONY LAKE	7-19	Engine power restriction - 7.5 Kw (10 hp)
SUNDANCE LAKE	7-32	WARNING! Dangerous thin ice due to aeration!
SWAN LAKE	7-20	Walleye release
TUPPER RIVER	7-20	No fishing within 100 m below outlet weir at Swan Lake Walleye release
WAPITI LAKE	7-19	Bait ban, single barbless hook
WILLISTON LAKE (in Zone B)	7-31	No rainbow trout under 30 cm
	7-36	See mercury warning page 1 in Region 7A , and definition of "stream mouth" on page 13 in the Provincial Regulations Arctic grayling release *
		Bull trout daily quota =1 (none under 30 cm or over 50 cm), Oct 16-Aug 14
WOLVERINE LAKE	7-52	No fishing within 100 m of sign at outlet, May 15-July 31 Rainbow trout daily and possession quotas = 2 (none over 50 cm); bait ban, single hook

UPPER WINDS AIR LTD.
AIR CHARTER
Serving BC, Yukon & NWT
Box 6804, Fort St. John, BC V1J 4J2
Rick Henderson • 250-787-5885 • 250-787-9719
www.upperwindsair.ca • info@upperwindsair.ca

Since 1981
Alaska Hwy Mile 462
Muncho Lake Prov. Park
Northern Rockies Lodge
Enjoy world class fishing in the unspoiled Northern Rocky Mountains!
Lake Trout, Arctic Grayling, Northern Pike, Walleye, Rainbow Trout, Dolly Varden
Fly-in fishing to lakes and streams in the Muskwa/Kechika wilderness area. Also outpost cabins on remote mountain lakes.
Northern Rockies Lodge
1-800-663-5269
www.northern-rockies-lodge.com

Great Canadian Lakes
Map Challenge
Prizes for best map markers. Put your mark on the fishing map! **Online** at
www.AnglersAtlas.com/markers/

Mike & Dixie Hammett
SIKANNI RIVER OUTFITTERS
Resident guided and non-guided Hunts, Fishing Trips, Pack Trips
MU's 7-42, 7-57, 7-37, 7-41
P.O. Box 11, Pink Mountain BC
Canada V0C 2B0
Email sro@sikanniriver.com
Cell 250-261-3878 Ranch 250-412-5209
We offer lodging and/or guide service for Zone B Resident BISON hunts

Corlone Sporting Goods Ltd.
WINCHESTER REPEATING ARMS
10033 - 9th St. DAWSON CREEK, BC
PHONE: 250-782-2111 • FAX: 250-782-2712
www.rockymountainrifles.com
email: sales@corlanes.com
www.corlanes.com

Chilliwack Dart & Tackle
Your fishing and hunting headquarters in the Fraser Valley...
• Over 250 Firearms in Stock
• Exclusive Browning Bow Dealer
• Great Prices! Best Selection!
• Zeiss, Leupold and Bushnell
Remington BROWNING
Visit us on the web:
www.chwkdart.com
sales@chwkdart.com
(604) 793-9922
2 - 9120 Young Rd.

DELUXE WALL TENTS
Free Shipping In Canada
with some restrictions
*wall tents *aluminum frames
*diesel heaters *wood stoves
*cots *tarps *bedrolls
www.deluxewalltents.com
perry@deluxewalltents.com
(250) 704-2534