

REGION 7A - Omineca

The Management Unit boundaries indicated on the map below are shown only as a reference to help anglers locate waters in the region. For more precise Management Unit boundaries, please consult one of the commercial Recreational Atlases available for B.C.

Zone A (Omineca) Fish and Wildlife Regional Office

(250) 565-6135

2000 South Ospika Blvd., Prince George, B.C.
V2N 4W5

Conservation Officer Service

Please call 1-877-952-7277 for recorded information or to make an appointment: at any of the following Field Offices:

Mackenzie, Prince George and Vanderhoof

R.A.P.P.

Report All Poachers and Polluters

Conservation Officer 24 Hour Hotline

1-877-952-RAPP (7277)

Cellular Dial #7277

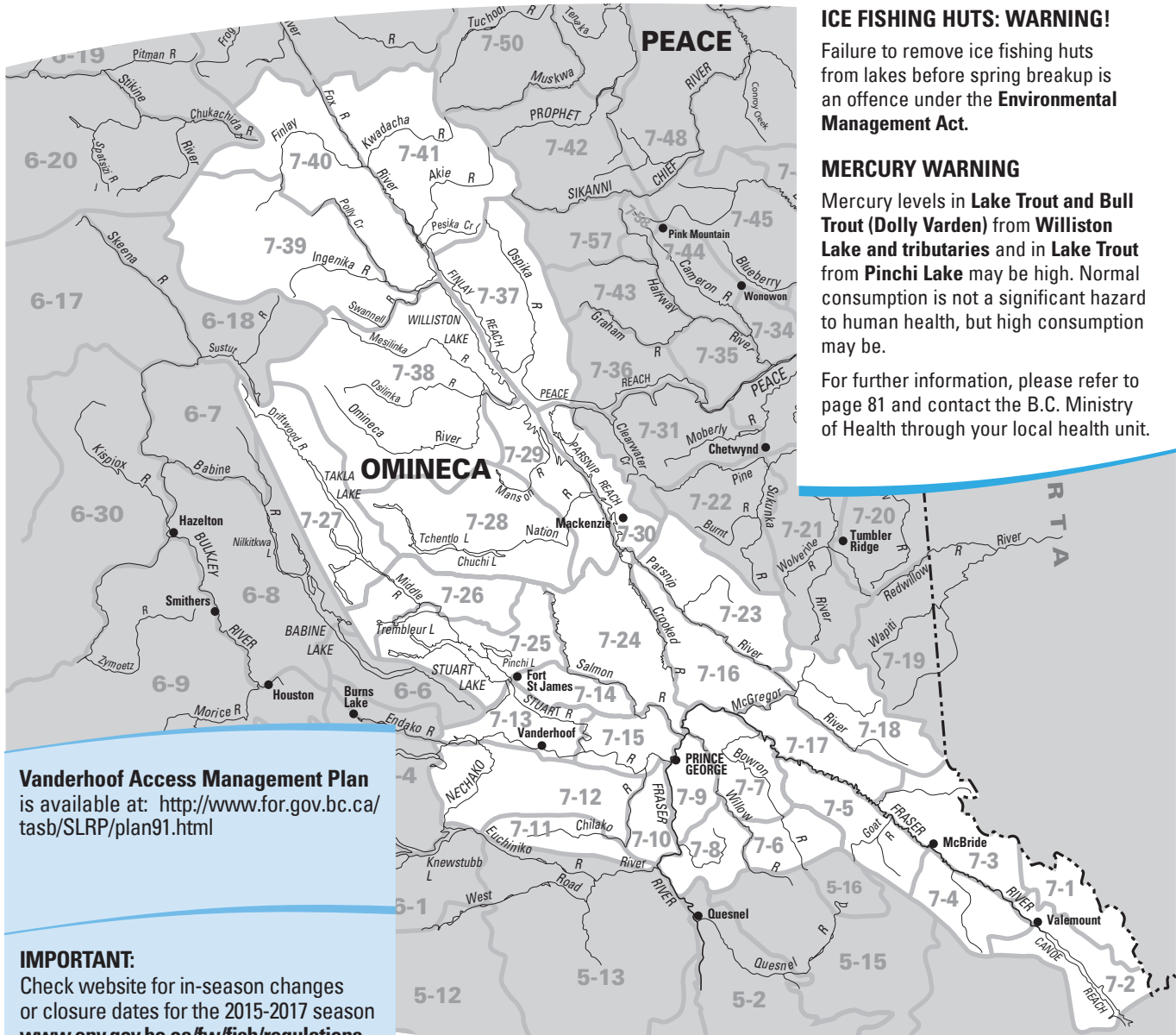
Please refer to page 94 for more information

www.rapp.bc.ca

FOR SALMON INFORMATION

Fisheries and Oceans Canada
District Offices (DFO)

Prince George: (250) 561-5366



ICE FISHING HUTS: WARNING!

Failure to remove ice fishing huts from lakes before spring breakup is an offence under the **Environmental Management Act**.

MERCURY WARNING

Mercury levels in **Lake Trout** and **Bull Trout (Dolly Varden)** from **Williston Lake** and **tributaries** and in **Lake Trout** from **Pinchi Lake** may be high. Normal consumption is not a significant hazard to human health, but high consumption may be.

For further information, please refer to page 81 and contact the B.C. Ministry of Health through your local health unit.

Vanderhoof Access Management Plan is available at: <http://www.for.gov.bc.ca/tasb/SLRP/plan91.html>

IMPORTANT:

Check website for in-season changes or closure dates for the 2015-2017 season
www.env.gov.bc.ca/fw/fish/regulations

REGION 7A - Omineca

REGIONAL REGULATIONS

GENERAL ZONE A RESTRICTIONS

Set lining is only permitted in the lakes of Zone A (see tables for exclusions). Set lines are restricted to one line with a single hook with a gap of not less than 3 cm (see pg 9). All set lines must be marked with the angler's name, address and telephone number. See "Rules on Bait Usage" (pg 9).

No fishing (spring closure): in any stream of Zone A, Apr. 1 to June 30. (See tables for exceptions).

Single barbless hook: must be used in all streams of Zone A, all year.

Bait ban: applies to all streams of Zone A, all year. See page 9 for details. (See tables for exceptions).

NOTICE TO ANGLERS

The Ministry in partnership with the Habitat Conservation Trust Foundation, is conducting studies on bull trout in the Upper Fraser/ Nechako watersheds. If you catch a bull trout with a coloured tag, please record and report the tag number, tag colour, date, time and location prior to releasing the fish unharmed. To report your catch of a tagged bull trout please contact the Fish and Wildlife Regional Office in Prince George at (250) 565-6135.

OMINECA WHITE STURGEON

White sturgeon from the Nechako, Stuart and the Upper Fraser watersheds have been listed as endangered under the *Species at Risk Act* (SARA). It is illegal to fish for, kill, harm, or harass white sturgeon in the Omineca Region. Recovery actions have been underway since 2006; more than 15,000 juvenile sturgeon have now been released into the Nechako River to help rebuild this critically endangered population. Habitat research is progressing with the release of more the 250,000 larval sturgeon in 2008 to help understand habitat needs and how to restore rearing areas for this critical life stage.

Help from the public will also be necessary for recovery and the Nechako White Sturgeon Recovery Initiative requests that you report date and location of all sightings or incidental captures, particularly in the Upper Nechako, Fraser Lake and Stuart/Takla Watersheds. If you observe or accidentally catch a sturgeon please call the Ministry of Forests, Lands and Natural Resource Operations at 250-565-6135, or go to either of these web sites: www.nechakowhitesturgeon.org or www.env.gov.bc.ca/omineca/esd/faw/sturgeon



Conservation-cultured juvenile sturgeon recaptured at age two.

📷 Mickey McDonald

REGION ZONE A DAILY QUOTAS

(See tables for exceptions)

Trout/char: 5, but not more than

- 1 over 50 cm
- 2 from streams
- 3 lake trout
- 1 bull trout (Dolly Varden)

NOTE: Bull trout (Dolly Varden) may only be retained Oct. 16 to Aug. 14. These fish may only be taken from lakes and only 30 - 50 cm in length. See below.

And you must release:

Bull trout (Dolly Varden):

- from streams, all year
- from lakes, Aug. 15 to Oct. 15

And you must release:

Lake trout:

- of any size, Sept. 15 to Oct. 31
- under 30 cm all year

Arctic grayling: catch and release only

Burbot: 5

Kokanee: 10 (none from streams)

White Sturgeon: CLOSED TO ALL FISHING

Whitefish: 15 (all species combined)

TABLE LEGEND

See the following tables for exceptions and additional regulations on specific waters.



- ➔ Stocked Lake (not all stocked lakes listed, see p. 87)
- cw** Classified Waters Licence required to fish Class I or Class II waters, see p. 8
- * Including tributaries
- 🌟 Youth/Disabled Accompanied Water

DAILY AND ANNUAL QUOTAS FOR SALMON

Please refer to the NOTICE on page 4 for Salmon Regulations.

POSSESSION QUOTAS

Possession quotas = 2 daily quotas for most species. See tables for exceptions.

Lake Trout: possession quota = 1 daily quota.

Bull Trout (Dolly Varden): possession quota = 1 daily quota.

COVER & PROTECT



TRUCK CANOPIES

- SALES
- SERVICE
- PARTS

ARMAGUARD SPRAY

- TRUCK BOX
- BOATS
- TRAILERS

4795 CONTINENTAL, PRINCE GEORGE, B.C.
250-561-1026

Nechako Outdoors

Hunting Fishing Archery & Camping

1.250.562.3597
2629 Vance Road, Prince George
1.250.567.9885
Vanderhoof

www.nechakooutdoors.ca

REGION 7A

WATER-SPECIFIC REGULATIONS

WATER BODY - MANAGEMENT UNIT * Includes Tributaries		EXCEPTIONS TO THE REGIONAL REGULATIONS
AIRLINE LAKE	7-28	No Fishing Nov 1-Apr 30 Lake trout release; no set lines
AMANITA LAKE	7-17	Electric motors only
ARCTIC LAKE	7-23	No Fishing Nov 1-Apr 30 Lake trout release; no set lines
ATTICHIKA CREEK	7-39	No Fishing 500 m upstream & downstream of the Thorn Creek confluence No Fishing 500 m upstream & downstream of the Kemess Creek confluence
BEAR LAKE (Crooked River Park)	7-16	No powered boats
BEAVERLEY CREEK	7-10	Exempt from Spring Closure and from bait ban Youth/Disabled Accompanied Water year round (see page 5 in the Provincial Regulations)
BEDNESTI LAKE	7-12	No Fishing Nov 1-Apr 30 Lake trout release; no set lines
BLACKWATER RIVER	7-10	See West Road River
BOBTAIL (Naltesby) LAKE	7-12	Kokanee daily quota = 5
BOW LAKE	7-15	Brook trout daily quota = 10
BOWRON RIVER	7-7	Exempt from Spring Closure; no rainbow trout under 30 cm
BUTTERFLY LAKE	7-15	Brook trout daily quota = 10
BYERS LAKE	7-15	Trout/char daily quota = 2
CAMP LAKE	7-15	Brook trout daily quota = 10; Kokanee daily quota = 5
CANOE RIVER	7-2	Exempt from Spring Closure; rainbow trout release Apr 1-June 30
CARINA LAKE	7-38	No Fishing Nov 1-Apr 30 Lake trout release; no set lines
CARP LAKE	7-24	No Fishing from marker buoys to the mouth of the McLeod River, Apr 1-June 30
CHICHOUYENILY CREEK	7-30	Exempt from Spring Closure; also EXEMPT from bait ban downstream of signs near its mouth
CHIEF GRAY (Bitch) LAKE	7-12	No Fishing Nov 1-Apr 30 Rainbow trout release; bait ban, single barbless hook
CHUBB LAKE	7-10	Engine power restriction - 7.5 Kw (10 hp)
CHUCHI LAKE	7-28	No Fishing Nov 1-Apr 30 Lake trout daily quota = 2; no set lines
CLUCULZ LAKE	7-12	Lake trout release; no set lines
CROOKED RIVER	7-24	No Fishing downstream (north) of the 200 Road bridge, Apr 1-June 30 Rainbow trout release and exempt from Spring Closure upstream (south) of the 200 Road bridge, Apr 1-June 30 Engine power restriction - 7.5 Kw (10 hp)
CUNNINGHAM LAKE	7-25	No Fishing Nov 1-Apr 30 Lake trout possession quota = 2 (only one over 50 cm); no set lines
DAHL LAKE	7-12	No powered boats
DAVIS BAY (in Findlay Reach of Williston Lake)	7-37	No Fishing within a 500 m radius of the Davis Forest Service Road bridge. See Davis River
DAVIS RIVER *	7-37	No Fishing
DEM LAKE	7-25	No Fishing Nov 1-Apr 30 Lake trout release; no set lines
DINA CREEK	7-30	No Fishing
DINA LAKE #1	7-30	Engine power restriction - 7.5 Kw (10 hp)
DINA LAKE #2	7-30	Electric motors only
EAGLET LAKE	7-7	Burbot daily quota = 1
EAST HAUTETE LAKE	7-27	No Fishing Nov 1-Apr 30 Lake trout release; no set lines
ECHO LAKE	7-13	Brook trout daily quota = 2; no powered boats
EENA LAKE	7-15	Electric motors only
EMERALD LAKE	7-15	No powered boats
ENDAKO RIVER	7-12	No Fishing Nov 15-June 30
EYE LAKE	7-26	No Fishing Nov 1-Apr 30 Lake trout release
FERGUSON LAKE	7-15	No powered boats
FINLAY RIVER	7-40	Exempt from Spring Closure
FRASER LAKE	7-13	Lake trout daily quota = 1 (none under 60 cm)
FRASER RIVER	7-9	Exempt from Spring Closure; also EXEMPT from bait ban upstream of Cottonwood River
FRIDAY LAKE	7-27	No Fishing Nov 1-Apr 30 Lake trout release
GAGNON CREEK	7-30	Exempt from Spring Closure downstream of signs near its mouth
GANTAHAZ LAKE	7-30	Electric motors only
GOAT RIVER *	7-5	No Fishing upstream of the Macleod Creek confluence, including Macleod Cr *, Sept 1-June 30
HART LAKE (Crooked River Park)	7-16	No Fishing Nov 1-Apr 30 Rainbow trout daily quota = 1 (none over 40 cm); bait ban, single barbless hook; electric motors only
HART LAKE (Fort St. James)	7-25	No Fishing Nov 1-Apr 30 Rainbow trout release; bait ban, single barbless hook
HATDUDATEHL LAKE	7-26	No Fishing Nov 1-Apr 30 Lake trout release; no set lines
HAUTETE LAKE	7-27	No Fishing Nov 1-Apr 30 Lake trout release; no set lines

NOTE: If a lake or stream is NOT listed here, then only the Provincial Regulations (pages 9-11) and the Regional Regulations (page 68) apply. New restrictions are highlighted in blue. Check for any in-season changes at: www.env.gov.bc.ca/fw/fish

REGION 7A - Omineca

WATER-SPECIFIC REGULATIONS

WATER BODY - MANAGEMENT UNIT * Includes Tributaries		EXCEPTIONS TO THE REGIONAL REGULATIONS
HEDRICK LAKE	7-18	No Fishing Nov 1-Apr 30 Trout/char release; bait ban, single barbless hook
HOBSON LAKE	7-12	No Fishing Nov 1-Apr 30 Rainbow trout release; bait ban, single barbless hook
HUMPHREY LAKE	7-38	No Fishing Nov 1-Apr 30 Lake trout release; no set lines
INDATA LAKE	7-28	No Fishing Nov 1-Apr 30; Lake trout possession quota = 2 (only one over 50 cm); no set lines
ISPAH LAKE	7-7	No powered boats
JOHN'S LAKE	7-38	No Fishing Nov 1-Apr 30 Bull trout release
KATHIE LAKE	7-15	Brook trout daily quota = 10
KEMESS CREEK	7-39	No Fishing from Attichka Creek to a point 500 m upstream
KLWALI LAKE	7-28	No Fishing Nov 1-Apr 30 Lake trout release; not set lines
KINBASKET LAKE'S TRIBUTARIES	7-2	See definition of "stream mouth", page 96 in the Provincial Regulations
KWITZIL LAKE	7-12	No powered boats
LA SALLE LAKES	7-3	No powered boats
LITTLE LOST LAKE	7-3	No Fishing Nov 1-Apr 30 Rainbow trout daily quota = 2; bait ban, single barbless hook
"LITTLE TOMAS" LAKE	7-25	No Fishing Nov 1-Apr 30 Lake trout release; no set lines; unnamed lake approx. 300 m downstream of Tomas Lake
"LOWER BEAVERPOND" LAKE	7-38	No Fishing Nov 1-Apr 30 Lake trout release; no set lines Lowermost of the two Beaverpond Lakes
LYNX LAKE	7-15	Electric motors only
"MACKENZIE LAKE #2 EAST"	7-10	Rainbow trout daily quota = 2 Most southeasterly of two unnamed lakes ("Mackenzie #1 West" and "Mackenzie #2 East"), located approx. 6 km SE of Erickson Lake
MACLEOD CREEK *	7-5	No Fishing Sept. 1-June 30
MANSON RIVER	7-28	Rainbow trout release
MCGREGOR RIVER	7-16	Exempt from Spring Closure
MCLENNAN RIVER	7-4	No Fishing Apr 1-Aug 31
MCLEOD RIVER	7-24	Artificial fly only, from Carp Lake to War Falls (excluding War Lake)
MCMILLAN CREEK	7-15	Youth/Disabled Accompanied Water year round (see page 5 in the Provincial Regulations) Exempt from Spring Closure and from bait ban
MIDDLE RIVER	7-26	Exempt from Spring Closure
MORFEE LAKE (South)	7-30	Electric motors only
"MT. MILLIGAN" LAKE	7-28	No Fishing Nov. 1-Apr. 30 Rainbow trout release; bait ban, single barbless hook; unnamed lake located approx. 7.5 km S/SE of Mt. Milligan
MUGAHA CREEK	7-30	EXEMPT from bait ban; Youth/Disabled Accompanied Water year round (see page 5 in the Provincial Regulations)
NAKINILERAK LAKE	7-27	No Fishing Nov. 1-Apr. 30 Lake trout possession quota = 2 (only one over 50 cm); no set lines
NALTESBY LAKE (Bobtail Lake)	7-12	Kokanee daily quota = 5
NARROW LAKE	7-7	No Fishing Nov. 1-Apr. 30 Lake trout release; no set lines
NATION ARM (Williston Lake)	7-30	No Fishing west of a line between two boundary signs approx. 500 m downstream (east) of the Nation River bridge on the Finlay Forest Service Road., Apr 1-June 30 Bull trout release west of a line between two boundary signs approx. 500 m downstream of the Nation River bridge on the Finlay Forest Service Road (when open)
NAUTLEY RIVER	7-13	Exempt from Spring Closure
NATION RIVER	7-30	See Nation Arm (Williston Lake)
NECHAKO RIVER	7-12	Exempt from Spring Closure Rainbow trout release from Cheslatta River to a boundary sign 5 km downstream and no rainbow trout under 35 cm from said sign downstream to Hwy #27 Bridge No Fishing for white sturgeon Exempt from bait ban downstream of Foothills Boulevard bridge in Prince George
NESS LAKE	7-15	Kokanee daily quota=10
NULKI LAKE	7-12	No Fishing west of a line between signs on lakeshore near mouth of Corkscrew Creek, Apr 1-May 31
OPATCHO LAKE	7-9	No Fishing Nov 1-Apr 30 Rainbow trout daily quota = 1 (none over 40 cm); bait ban, single barbless hook
PACIFIC LAKE	7-16	No Fishing Nov 1-Apr 30 Lake trout release; no set lines
PARSNIP RIVER	7-23	Exempt from Spring Closure
PINCHI LAKE	7-25	NOTE: see mercury warning, page 67 in this section
PINKERTON LAKE	7-7	No fishing Nov 1-Apr 30 Rainbow trout daily quota = 3; bait ban, single barbless hook
PORTAGE LAKE	7-16	No Fishing Nov 1-Apr 30 Lake trout release; no set lines

NOTE: If a lake or stream is NOT listed here, then only the Provincial Regulations (pages 9-11) and the Regional Regulations (page 68) apply. New restrictions are highlighted in blue. Check for any in-season changes at: www.env.gov.bc.ca/fw/fish

WATER BODY - MANAGEMENT UNIT

* Includes Tributaries

EXCEPTIONS TO THE REGIONAL REGULATIONS

PTARMIGAN CREEK	7-5	No Fishing from falls to quarry bridge
PURVIS LAKE	7-28	No Fishing Nov 1-Apr 30 Lake trout release; no set lines
SALMON RIVER	7-15	Exempt from Spring Closure
SHANDY LAKE	7-5	Electric motors only
SHERE LAKE	7-4	Brook trout daily quota = 2
SLENDER LAKE	7-6	No set lines
SLIM LAKE	7-5	Electric motors only
SQUARE LAKE	➔ 7-16	No powered boats In Crooked River Provincial Park (formerly "Squaw" Lake)
"SQUAW" LAKE	➔ 7-16	See Square Lake
STALK LAKES	7-39	Bait ban
STELLAKO RIVER	CW 7-12	Open June 1-Nov 14; Class II water* when open (Steelhead Stamp not required) Rainbow trout release Fly fishing only between signs approx. 250 m and 4 km downstream of the bridge near the François Lake outlet No powered boats from François Lake to the falls See Region 6 tables for restrictions applying to François Lake's outlet area
STONY LAKE	7-6	No set lines
STUART RIVER	7-15	Exempt from Spring Closure; rainbow trout release, Apr 1-June 30
SWIFT CREEK	7-2	No Fishing Apr 1-Aug 31 No Fishing from upstream side of weir to CNR bridge in Valemount
TACHEEDA LAKES (North and South)	7-16	No Fishing Nov 1-Apr 30 Lake trout release; not set lines
TATLATUI LAKE	7-39	Rainbow trout daily quota = 2
TCHENTLO LAKE	7-28	No Fishing Nov 1-Apr 30 Lake trout possession quota = 2 (only one over 50 cm); no set lines
TEBBUTT LAKE	➔ 7-13	Brook trout daily quota = 2; bait ban, single barbless hook
THORN CREEK	7-39	No Fishing from Attichika Creek to a point 500 m upstream
TOMAS LAKE	7-25	No Fishing Nov 1-Apr 30 Lake trout release; no set lines
TOMIAS LAKE	7-38	No Fishing Nov 1-Apr 30 Lake trout release; no set lines
TRAPPING LAKE	➔ 7-9	Engine power restriction - 7.5 Kw (10 hp)
TSAYTA LAKE	7-28	No Fishing Nov 1-Apr 30 Lake trout possession quota = 2 (only one over 50 cm); no set lines
TSITNIZ LAKE	7-9	No powered boats
TUMUCH LAKE	7-5	Electric motors only
VIVIAN LAKE	➔ 7-15	Engine power restriction - 7.5 Kw (10 hp)
UNNAMED LAKE (Kinglet Lake) located approximately 100 m west of Butterfly Lake	7-15	Brook trout daily quota = 10
UNNAMED LAKE (Redstart Lake) located approximately 200 m south- west of Butterfly Lake	7-15	Brook trout daily quota = 10
WAR LAKE	7-24	Trout/char daily quota = 4 (not more than 3 char)
WESTON CREEK	7-30	Exempt from Spring Closure downstream of signs near its mouth
WEST ROAD ("BLACKWATER") RIVER'S TRIBUTARIES	7-10	Trout daily quota = 1 (none under 30 cm); artificial fly only For regulations on the mainstem of the West Road River, see Region 5
WHITEFISH LAKE	7-25	No Fishing Nov 1-Apr 30 Lake trout release; no set lines
WICHEEDA LAKE	7-16	No Fishing Nov 1-Apr 30 Rainbow trout daily quota = 3; bait ban, single barbless hook
WILLISTON LAKE (in Zone A) (includes waters 500 m east/upstream of the Causeway Road)	7-30 7-37 7-38	No rainbow trout under 30 cm; kokanee daily quota = 4 Bait ban 500 m upstream and downstream of Causeway Road July 1 - Oct. 30 See Nation Arm REMINDER: Arctic grayling release from tributaries See mercury warning on page 67 in this section , and definition of "stream mouth" on page 96 in the Provincial Regulations
WILLOW RIVER	7-9	Exempt from Spring Closure; no rainbow trout under 30 cm
WINDY POINT LAKE	➔ 7-24	Electric motors only
WITCH LAKE	7-28	No Fishing Nov 1-Apr 30 Lake trout release; no set lines
YELLOW HEAD LAKE	7-1	No Fishing Nov 1-Apr 30 Lake trout release; no set lines

FingerLakeResort.com
One Hour South of Vanderhoof



Cabins, RV Camping, Boats
Call to Book 1-778-785-1114

North Central Firearms Training

CORE, PAL & Restricted
PAL Certification Available.
Full Courses & Challenges Offered.



250.613.9170
dan@northcentralfirearmstraining.ca www.northcentralfirearmstraining.ca