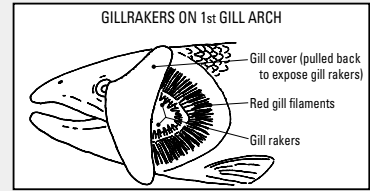
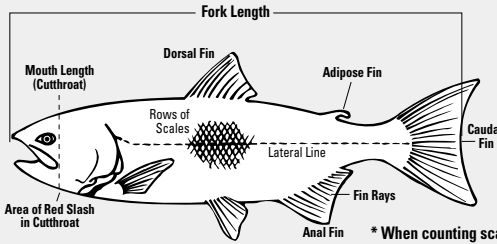
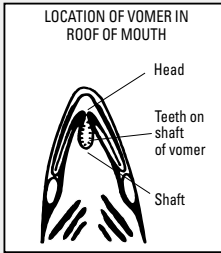


# KEY TO THE TROUT, SALMON, CHAR, GRAYLING, INCONNU AND WHITEFISH OF BRITISH COLUMBIA



\* When counting scales:  
- count rows of scales along lateral line  
- estimate number per inch and multiply by length of area covered by scales

**VERMICULATIONS**  
The irregular worm-like markings on the back and dorsal fin of two of the chars

Vermiculations *5-15*

Spots      Halos

**START HERE**

← Large scales, less than 100\*      Small scales, more than 100\* →

## WHITEFISHES, INCONNU & GRAYLING

## TROUT, CHAR & SALMON

Dorsal fin more than 17 rays; dorsal fin larger & sail-like on fish over 8" long

Dorsal fin less than 17 rays; dorsal fin not enlarged

Anal fin, 12 or less rays  
**TROUT, CHAR & ATLANTIC SALMON**

Anal fin, 13 or more rays  
**PACIFIC SALMON**

### GRAYLING

Small mouth, nose overhangs lower jaw

Large mouth, lower jaw extends well beyond nose

No distinct black spots on back or caudal fin, but fine black speckling may be present

Distinct black spots on back and caudal fin

### WHITEFISHES

### INCONNU

### CHUM, SOCKEYE (Kokanee)

### CHINOOK, COHO, PINK

Black spots on head and body, teeth on shaft of vomer

Light spots on body - pink, red, cream or yellow; teeth on head of vomer only, none on shaft

gill rakers on 1st arch are short, stout & widely spaced, usually 19-26

gill rakers on 1st arch are long, slender & crowded, usually 30-40

Mouth not black; large black spots on back & tail

Mouth black

### TROUT, ATLANTIC SALMON

### CHAR

### CHUM

### SOCKEYE (Kokanee)

### PINK

### CHINOOK & COHO

Caudal fin with radiating rows of black spots; body never with red spots; adipose fin often with black margin

Caudal fin usually unspotted - never with regular rows of black spots; body may have reddish spots

Black gums; spots on both halves of tail

White gums; When present, spots only on top half of tail

### CHINOOK

### COHO

Mouth does not extend past back of eye; no teeth at base of tongue; no red slash on lower jaw

Large mouth extends past back of eye; small teeth usually present at base of tongue; red slash on lower jaw

### RAINBOW TROUT/ STEELHEAD

### CUTTHROAT TROUT

Tail deeply forked; light spots on head, body, tail & dorsal fin; light coloured vermiculations on back and sides

Tail square or slightly forked; light spots on body but not on dorsal fin or tail

Mouth to centre of eye (seldom far beyond eye, except in large males); gill cover with only 2-3 large spots; teeth on vomer not well developed; no red on adipose fin

Mouth to back 1/2 of eye or extending well beyond eye in large fish; gill cover with many spots; teeth on vomer well developed; rust-red spots sometimes on body of adult & often on margin of adipose fin

Tail & dorsal fin with dark wavy lines or blotches; back usually with vermiculations; pink or red spots on sides with blue halos

Tail & dorsal fin without dark wavy lines; spots on sides vary from pink/red to cream/yellow

### ATLANTIC SALMON

### BROWN TROUT

### LAKE TROUT

### BROOK TROUT

### DOLLY VARDEN/BULL TROUT

**BC**