

THIS MAP IS NOT TO BE USED FOR NAVIGATIONAL PURPOSES

Snowmobile Closures within Mountain Caribou Recovery Area Queest Mountain Closure

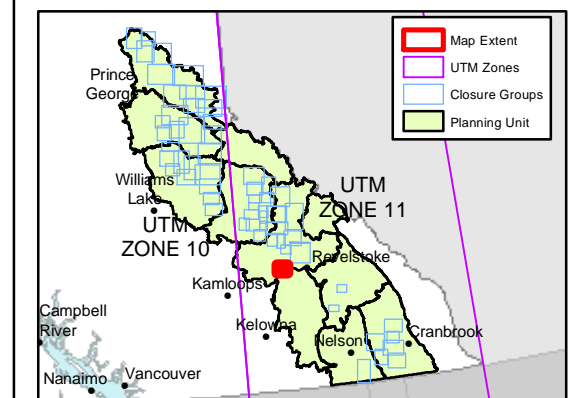
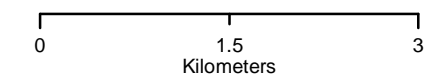
- Area Closed to Snowmobiles under Legal Order
- Area Open to Snowmobiles under Agreement - See Map Text for Conditions
- Parks and Protected Areas
- Wildlife Management Unit Boundary
- Highway
- Unpaved Road
- Private Land
- Lakes
- River/Creek

Please be aware that these closure information maps may change from time to time. Users are solely responsible to ensure they are using the most recent version(s) of the map(s).

WARNING

Proceed at your own risk. Mountain environments, including the open riding areas and trails shown on the map, have areas of high avalanche risk, unmarked terrain hazards and other natural hazards. Individual riders are responsible to determine whether the areas are safe to ride, to use safe snowmobiling practices and to be aware of the local hazards.

Be trained in avalanche skills, be aware of current avalanche conditions and carry a transceiver, probe and shovel. For more information on avalanche safety visit www.avalanche.ca and download the Avalanche Canada mobile App.



Ministry of
Forests, Lands and
Natural Resource Operations

Coordinate System: NAD 1983 BC Environment Albers
Last updated: 02/12/2016
Updated by: camahood, FLNR Williams Lake