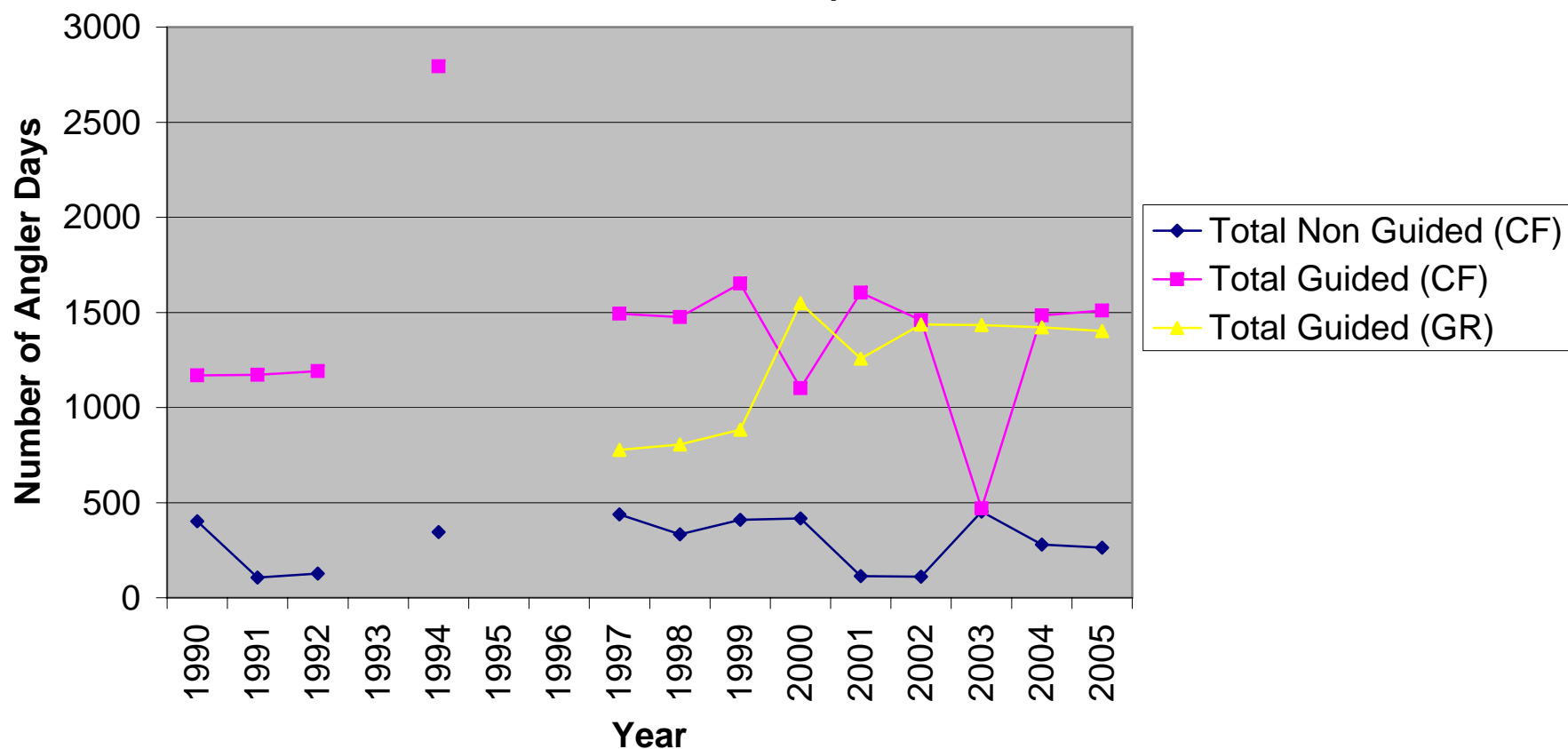
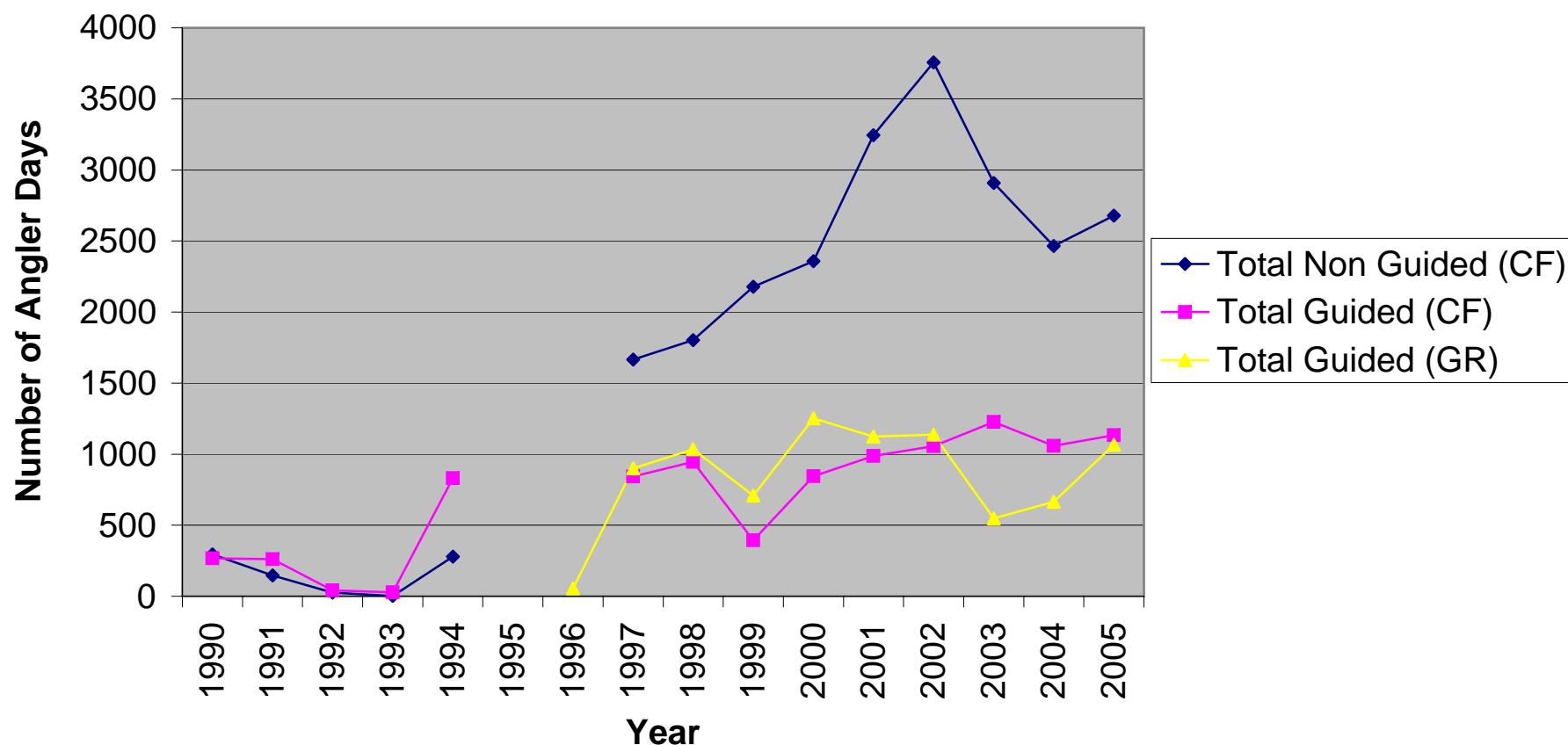


Total Non-Guided versus Guided Non-Resident Angler Days for the Babine River during the Classified Waters Period (Sept-Oct) from 1990 to 2005 (according to counterfoil and guide report data)



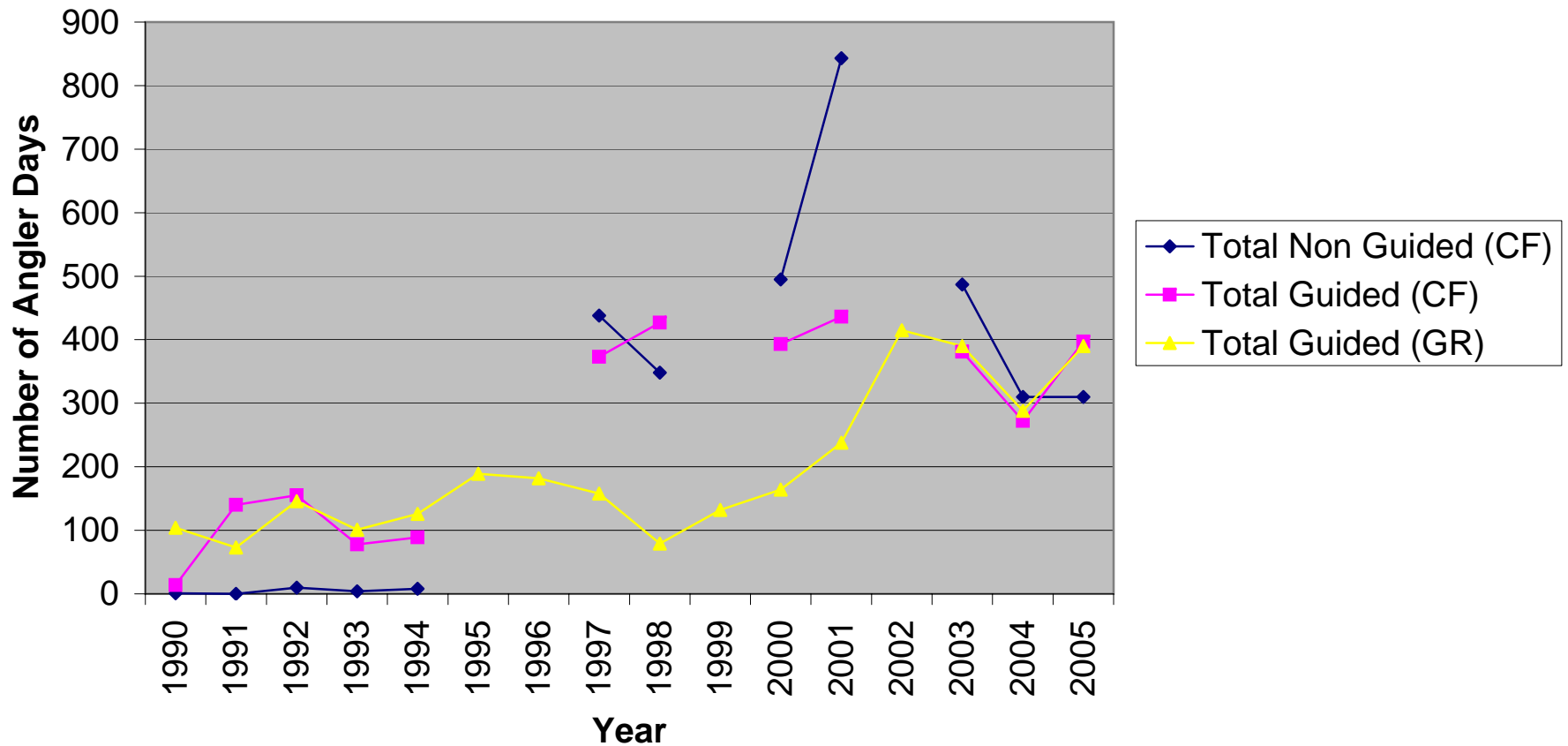
Note - Counterfoil data not available for 1993 and 1995-6. CF refers to counterfoil data, GR refers to guide report data and non-resident refers to all anglers from outside of B.C.

Total Non-Guided versus Guided Non-Resident Angler Days for the Bulkley River during the Classified Waters Period (Sept-Oct) from 1990 to 2005 (according to counterfoil and guide report data)



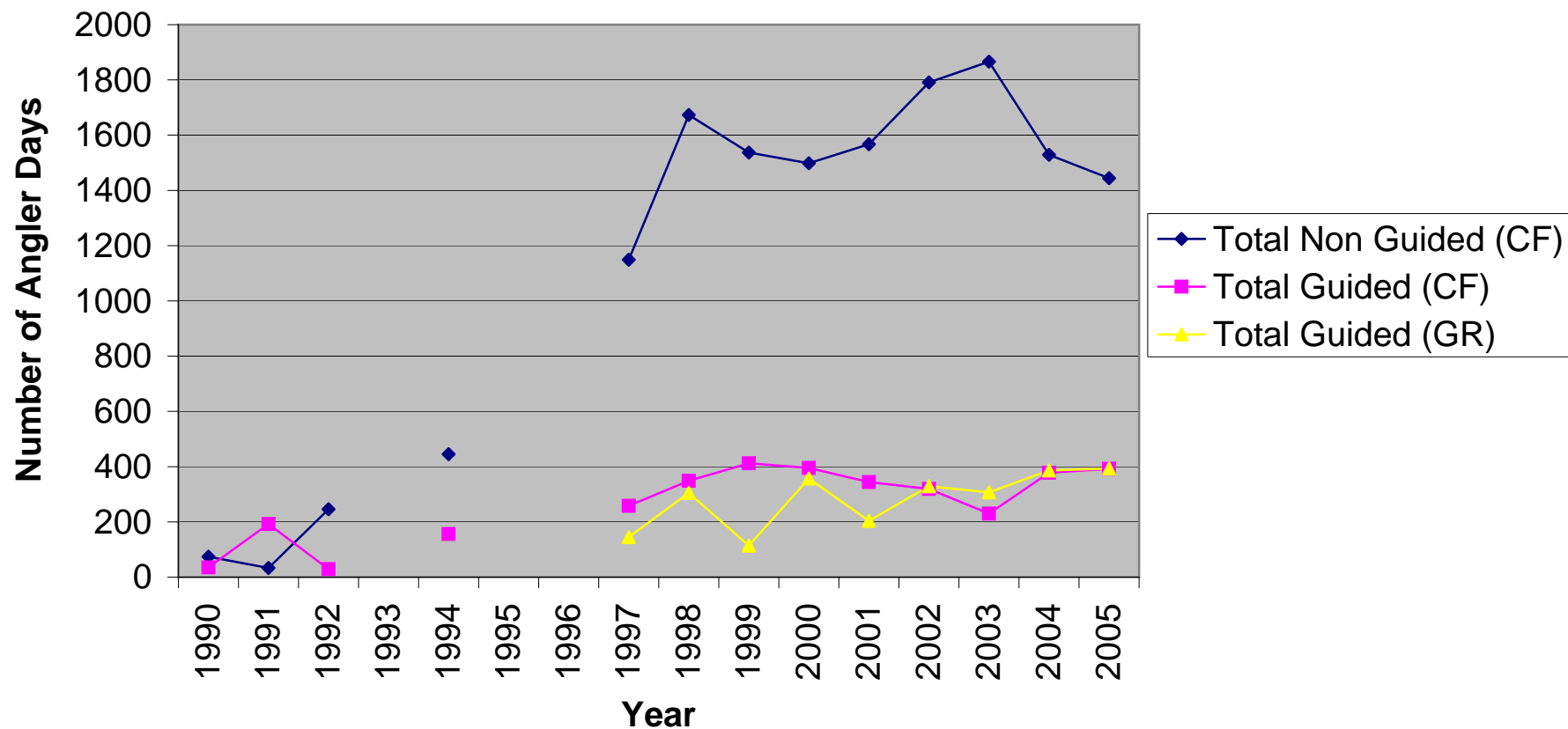
Note - Counterfoil data not available for 1995-6. CF refers to counterfoil data, GR refers to guide report data and non-resident refers to all anglers from outside of B.C.

Total Non-Guided versus Guided Non-Resident Angler Days for the Kitsumkalum River during the Classified Waters Period (Jan-Dec) from 1990 to 2005 (according to counterfoil and guide report data)



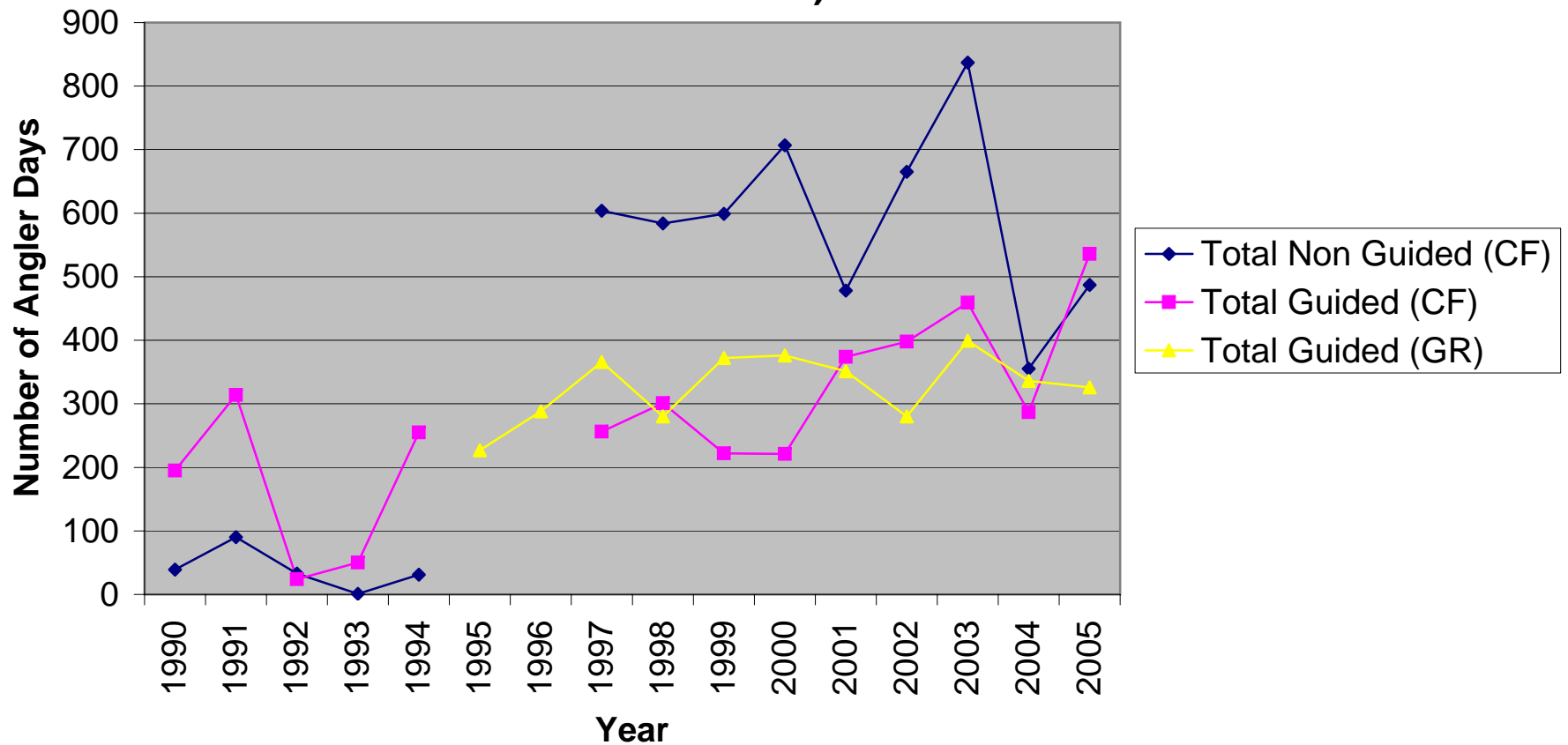
Note - Counterfoil data not available for 1995-6, 1999 and 2002. CF refers to counterfoil data, GR refers to guide report data and non-resident refers to all anglers from outside of B.C.

Total Non-Guided versus Guided Non-Resident Angler Days for the Kispiox River during the Classified Waters Period (Sept- Oct) from 1990 to 2005 (according to counterfoil and guide report data)



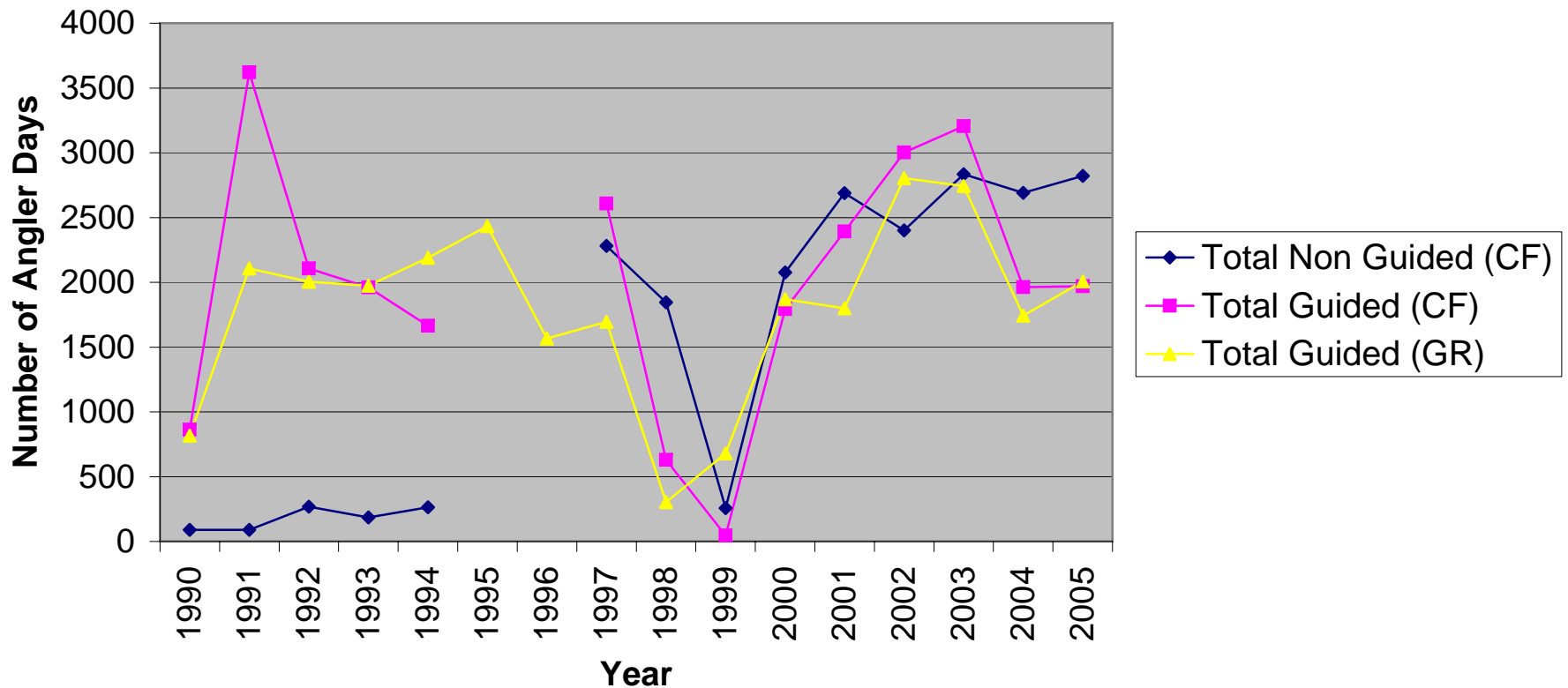
Note - Counterfoil data not available for 1993 and 1995-6. CF refers to counterfoil data, GR refers to guide report data and non-resident refers to all anglers from outside of B.C.

Total Non-Guided versus Guided Non-Resident Angler Days for the Morice River during the Classified Waters Period (Sept-Oct) from 1990 to 2005 (according to counterfoil and guide report data)



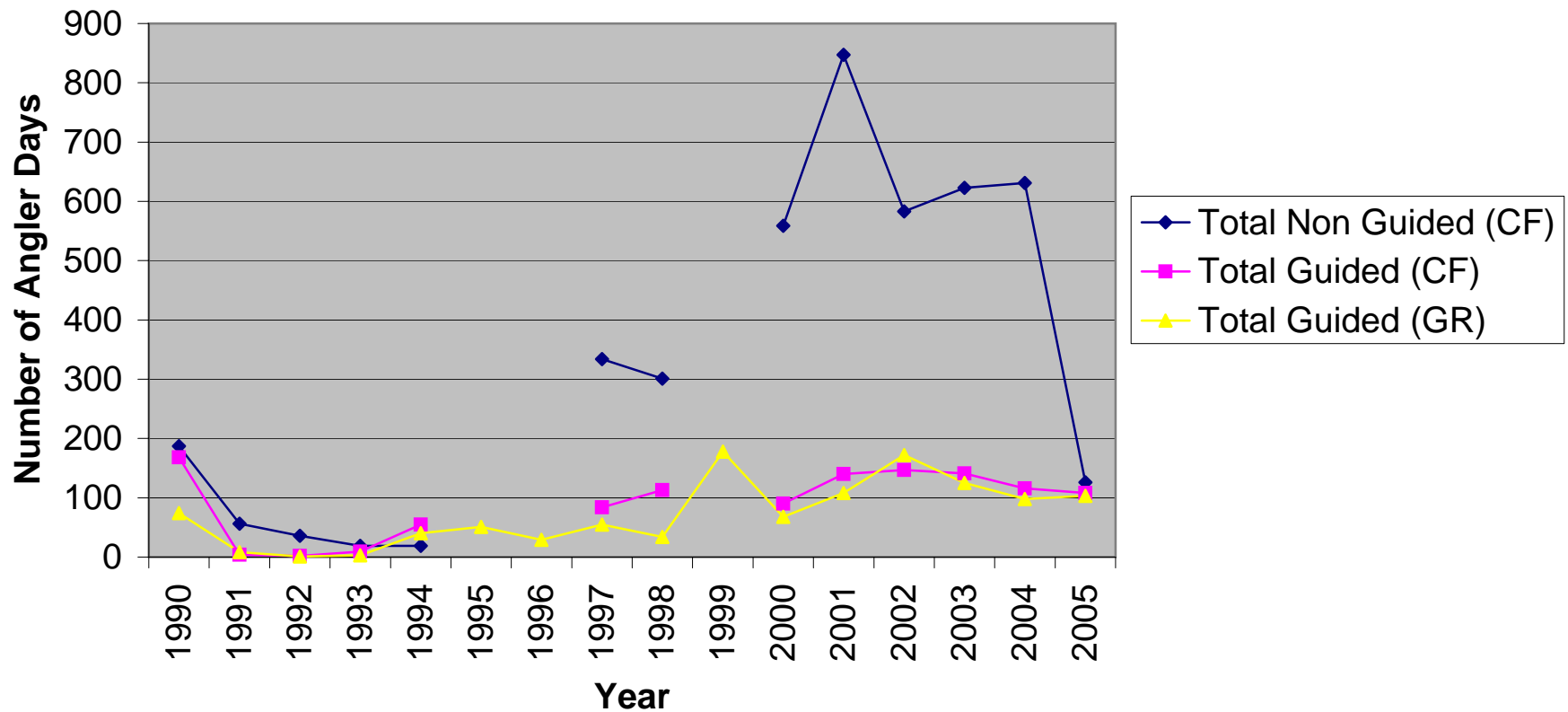
Note - Counterfoil data not available for 1995-6. CF refers to counterfoil data, GR refers to guide report data and non-resident refers to all anglers from outside of B.C.

**Total Non-Guided versus Guided Non-Resident Angler Days for
the
Skeena River during the Classified Waters Period (July-Oct)
from 1990 to 2005 (according to counterfoil and guide report
data. Note: Data from Skeena 2 and 4 combined)**



Note - Counterfoil data not available for 1995-6. CF refers to counterfoil data, GR refers to guide report data and non-resident refers to all anglers from outside of B.C.

Total Non-Guided versus Guided Non-Resident Angler Days for the Zymoetz River during the Classified Waters Period (Sept-Oct) from 1990 to 2005 (according to counterfoil and guide report data. Note: data from Zymoetz Class 1 and 2 sections combined)



Note - Counterfoil data not available for 1995-6 and 1999. CF refers to counterfoil data, GR refers to guide report data and non-resident refers to all anglers from outside of B.C.