
***Libellula quadrimaculata* (Four-spotted Skimmer)**

ORDER, SUBORDER, FAMILY

Odonata, Anisoptera (True Dragonflies), Libellulidae (Skimmers)

ACCOUNT BACKGROUND ([PDF 1.1MB](#)) – LINK TO INTRODUCTION, REFERENCES AND APPENDICES

DESCRIPTION

Grey-brown to yellow-brown, except for the black end of the abdomen. The thorax has yellow and black marks on the sides; the abdomen has narrow yellow side stripes. Each wing has a small dark spot at the midpoint of the front edge, and the hindwings have a dark triangular patch at the base. A golden stripe on the front edge of each wing can be prominent or vague. Length: male female 43mm.

GLOBAL RANGE

One of the most widespread dragonflies on the globe. Alaska, Yukon and Northwest Territories to Labrador and Newfoundland, south to Pennsylvania, Texas and Arizona. Also northern Europe and Asia (Needham et al. 2000). Faunal element: Widespread (H) (see Appendix 3).

BRITISH COLUMBIA DISTRIBUTION

Throughout the province.

BIOLOGY

Lives in marshy-edged waters, from mountain and northern bogs, fens (Wf01, Wf05-08; Wb13, Wb50-52) and marshes (Wm01-02) to warm alkaline ponds (Wm07; Gs01-03) and marshes (Wm04-06) in southern valleys; most common in acidic waters. One of the earliest dragonflies in the spring.

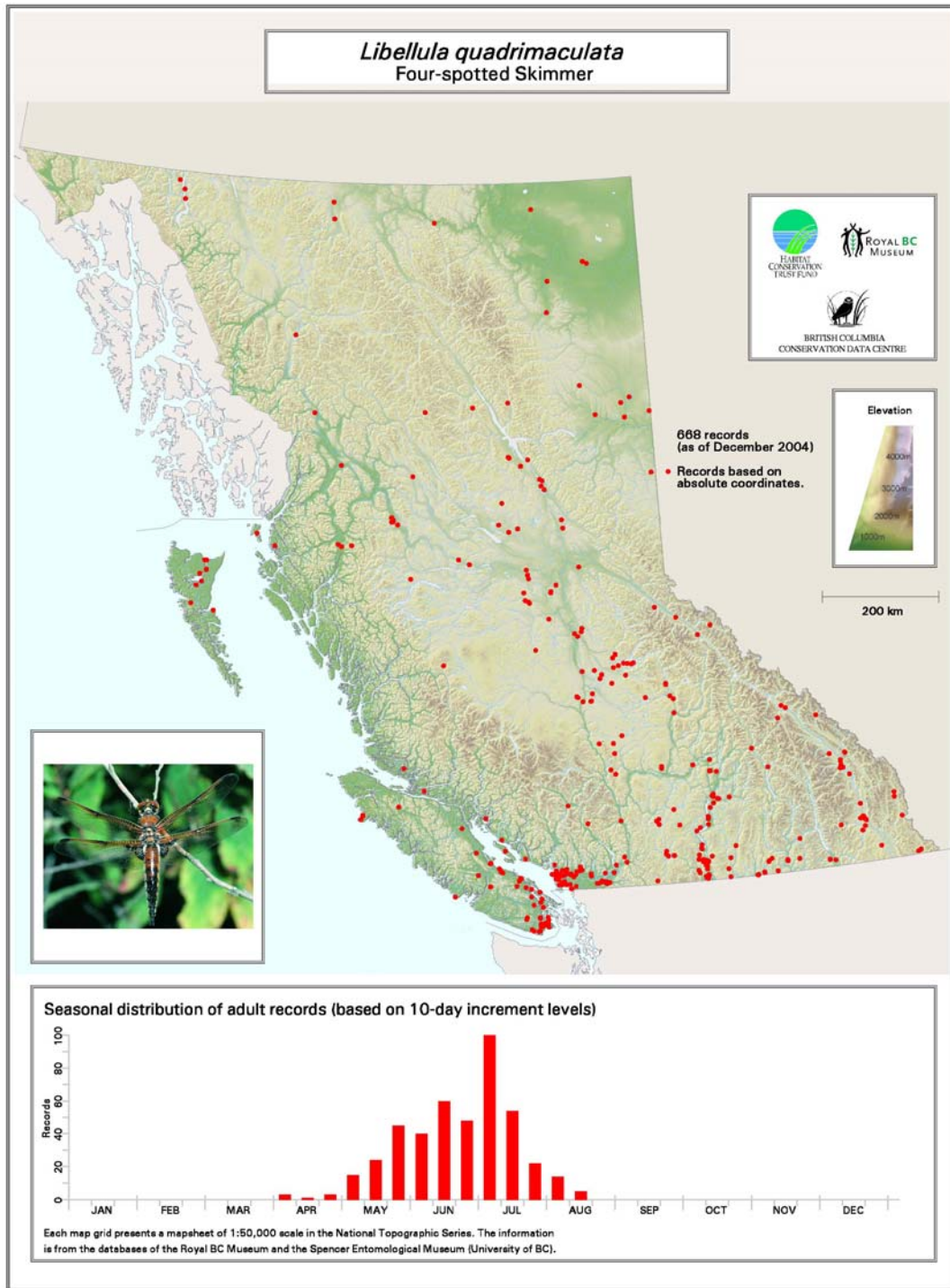
BRITISH COLUMBIA FLIGHT PERIOD

Mid April to early October; most records range from mid May to late August.

PHOTO

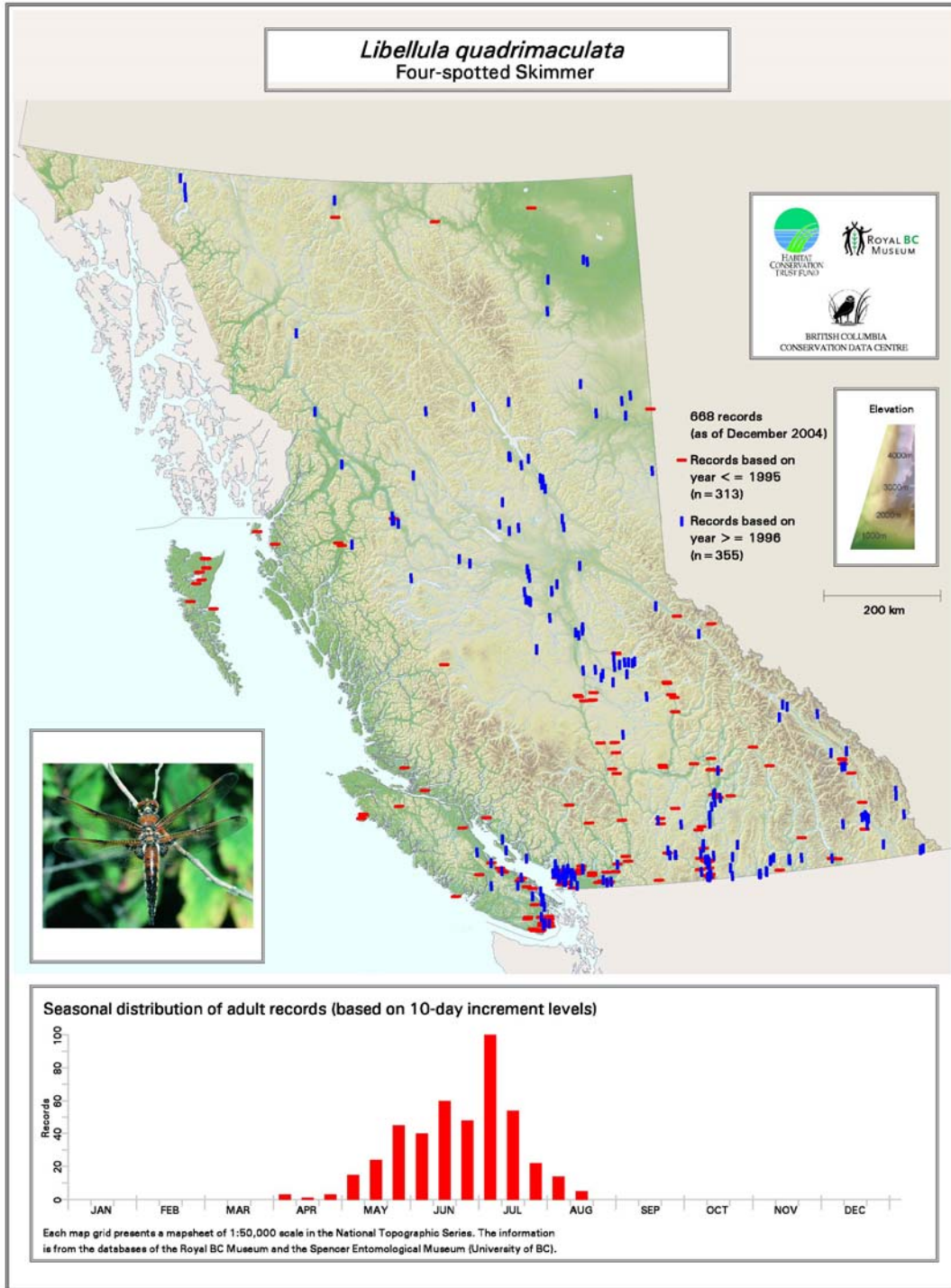


MAPS



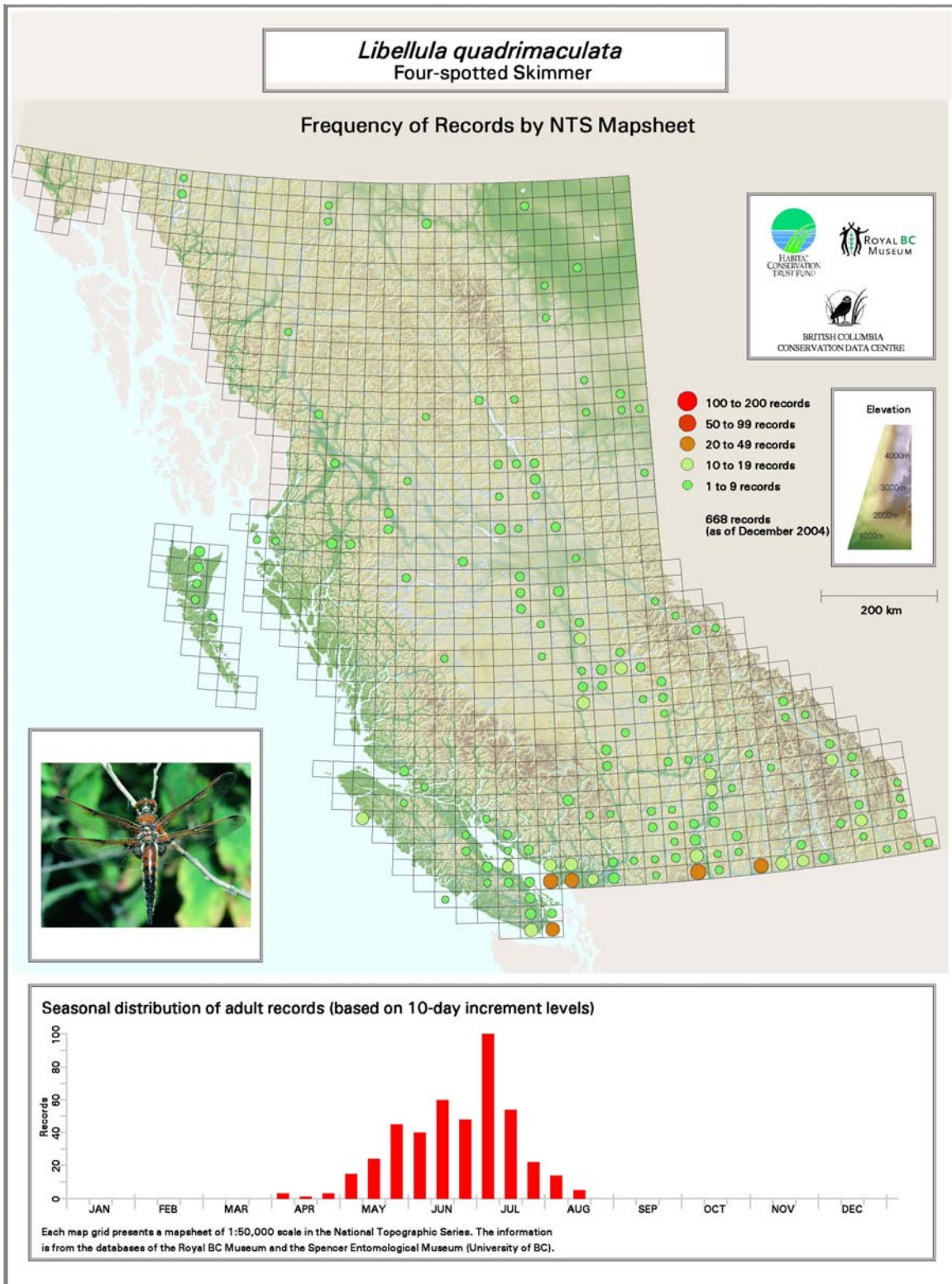
Map 1. Geographical distribution and seasonal abundance of records in British Columbia.

Royal British Columbia Museum and the Spencer Entomological Museum. 2004. Odonata distribution maps based on data from the Royal British Columbia Museum and the Spencer Entomological Museum. Produced by Clover Point Cartographics for the Royal British Columbia Museum and Conservation Data Centre, Victoria, BC.



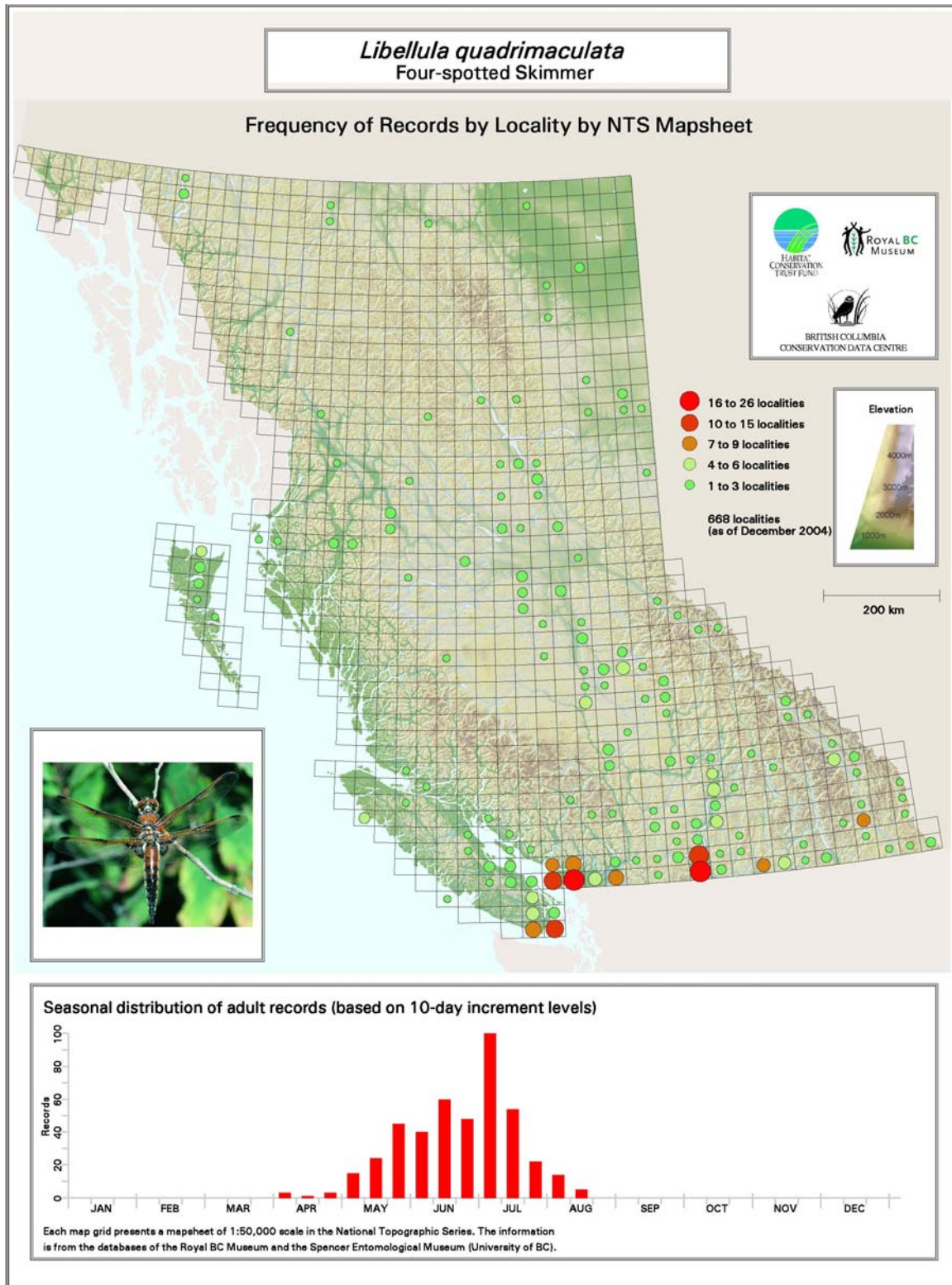
Map 2. Geographical distribution of records in British Columbia before and after organized surveys began in 1996

Royal British Columbia Museum and the Spencer Entomological Museum. 2004. Odonata distribution maps based on data from the Royal British Columbia Museum and the Spencer Entomological Museum. Produced by Clover Point Cartographics for the Royal British Columbia Museum and Conservation Data Centre, Victoria, BC.



Map 3. Frequency of records in British Columbia by NTS 1/50,000 mapsheet.

Royal British Columbia Museum and the Spencer Entomological Museum. 2004. Odonata distribution maps based on data from the Royal British Columbia Museum and the Spencer Entomological Museum. Produced by Clover Point Cartographics for the Royal British Columbia Museum and Conservation Data Centre, Victoria, BC.



Map 4. Frequency of collection localities in British Columbia by NTS 1/50,000 mapsheet.

Royal British Columbia Museum and the Spencer Entomological Museum. 2004. Odonata distribution maps based on data from the Royal British Columbia Museum and the Spencer Entomological Museum. Produced by Clover Point Cartographics for the Royal British Columbia Museum and Conservation Data Centre, Victoria, BC.