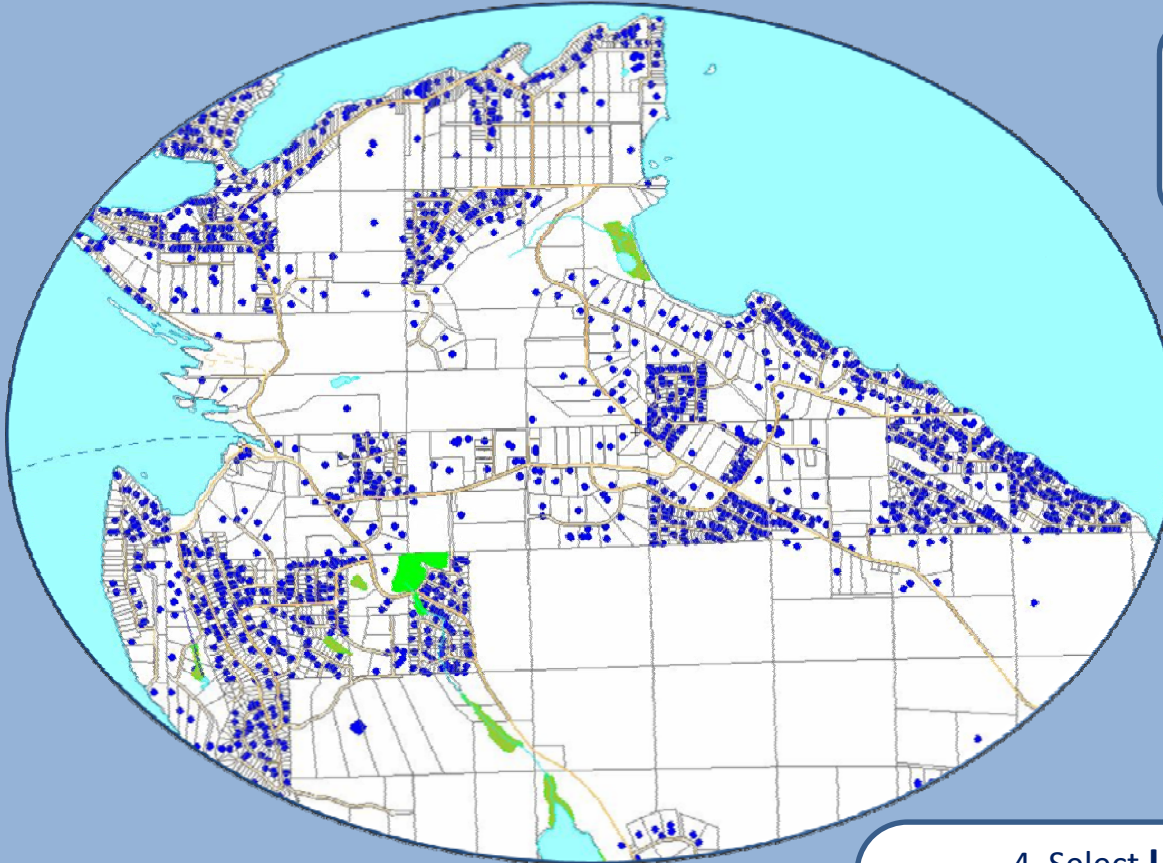


# Is Your Well On The Map?

1. Launch the Water Resources BC Website  
([http://www.env.gov.bc.ca/wsd/data\\_searches/wrbc/index.html](http://www.env.gov.bc.ca/wsd/data_searches/wrbc/index.html))

Is your well not on the map? Contact the groundwater technician at 250.953.3408 for more information.

2. Select **Find Location** tab



3. Select **Place Name** tab, type **Gabriola**, and select **Gabriola Island**

See a blue dot?  
You're on the map!

4. Select **Layers** tab and Click folder – sub folder:  
**Water Wells – Water Wells**  
**Land Ownership and Status - Integrated Cadastral Fabric Private**  
**Base Maps – DRA**

6. Zoom to Your Property

5. Select **Refresh Map**

# Is Your Well On The Map?

1. Launch the Water Resources BC Website

[http://www.env.gov.bc.ca/wsd/data\\_searches/wrbc/index.html](http://www.env.gov.bc.ca/wsd/data_searches/wrbc/index.html)

**Tip:** If you know your parcel identifier (PID), skip steps 2, 3 and 6. Select **Zoom To** tab at the top of the screen, select **Integrated Cadastral Fabric** on the right, type the PID in the box and press enter, then select **Zoom to** on the right. Follow steps 4 and 5.

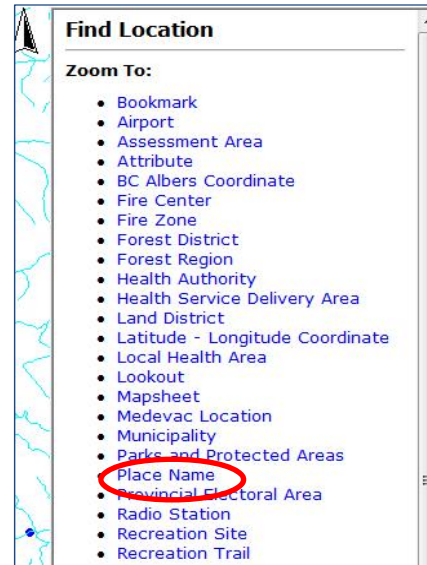


2. Select **Find Location** tab



# Is Your Well On The Map?

3. Select **Place Name** tab, type **Gabriola**, and select **Gabriola Island**



4. Select **Layers** tab and click these folders, then check the boxes and mark the 'i' beside water wells:  
**Water Wells** folder – **Water Wells** box  
**Land Ownership and Status** folder - **Integrated Cadastral Fabric Private** box  
**Base Maps** folder – **DRA** box



5. Select **Refresh Map** at bottom of layers list

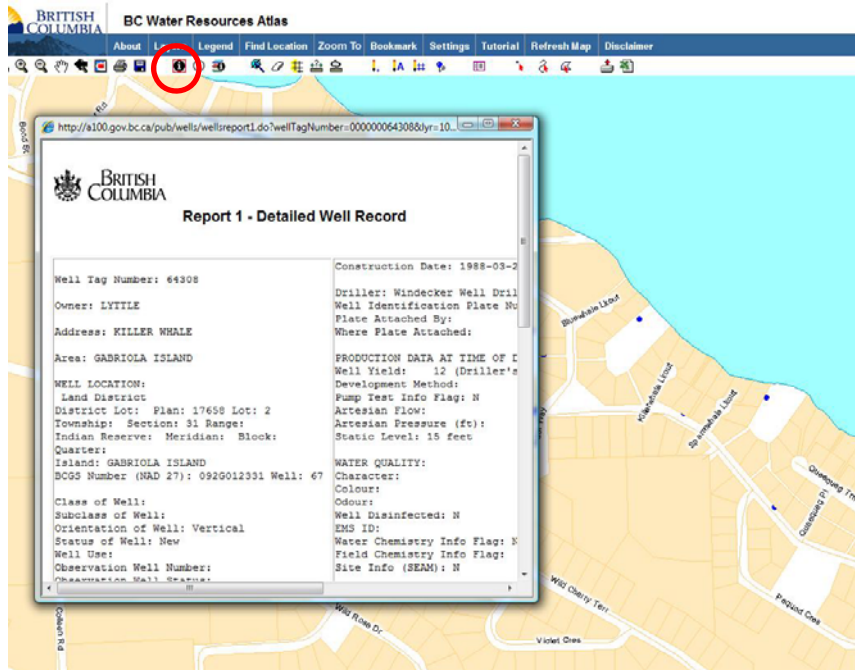
6. Zoom to your property using the magnifying glass tools



# Is Your Well **NOT** On The Map?

See a blue dot? You're on the map! Select the **info button** at the top, then select **your well (the blue dot)** to see the well information.

**Is the well your well?** Check the date of drilling, the well depth, and the drilling company.



## Why should you submit your well information?

1. You can be notified of contaminants in the water.
2. Prospective home buyers can view the well record.
3. It provides information for groundwater protection planning.

**How to submit your well information:** Contact the groundwater technician at (250) 953-3408 with a drilling record if available, or an address, parcel identifier (PID), date of drilling, well depth, drilling company, and any other well construction information.