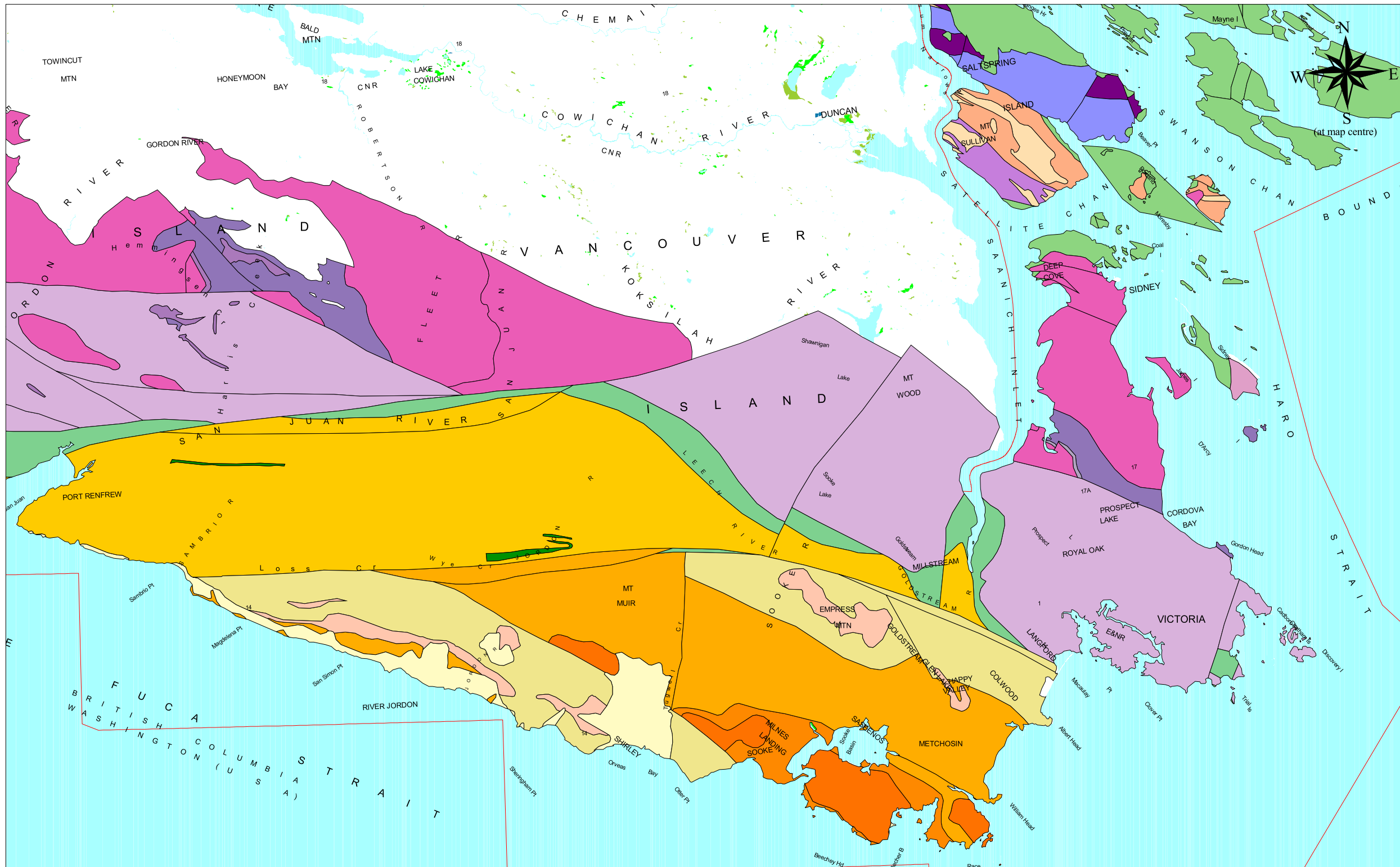


Map 2: Bedrock lithology of Southern Vancouver Island



SRMB, Annotation, 1:2M

Bedrock lithology

- Dn
- Ec
- Em1
- Em1a
- Em2
- Em3
- Em4
- JI
- JI_uTrk
- JKIs
- JKlv
- MPf
- PMw
- Tc
- Tw
- IDsi
- IJBv
- ITri
- uDm
- uKN
- uTrK
- uTrq
- uTrs

CRD Outline

EBM, Water Polygon Features, 1:20K

- River/Stream - Definite
- Lake - Definite
- Reservoir - Definite
- Coastline - Definite

EBM, Wetland Polygon Features, 1:20K

- Flooded Land - Inundated
- Marsh
- Swamp

Map reference (for interpretation of codes):
 Massey, N.W.D. (1994);
 Geological Compilation,
 Vancouver Island, British Columbia
 (NTS 92 B, C, E, F, G, K, L, 102 I);
 B.C. Ministry of Energy, Mines
 and Petroleum Resources, Open File 1994-6, 5
 digital files, legend, 1:250 000-scale.

1:300,000

