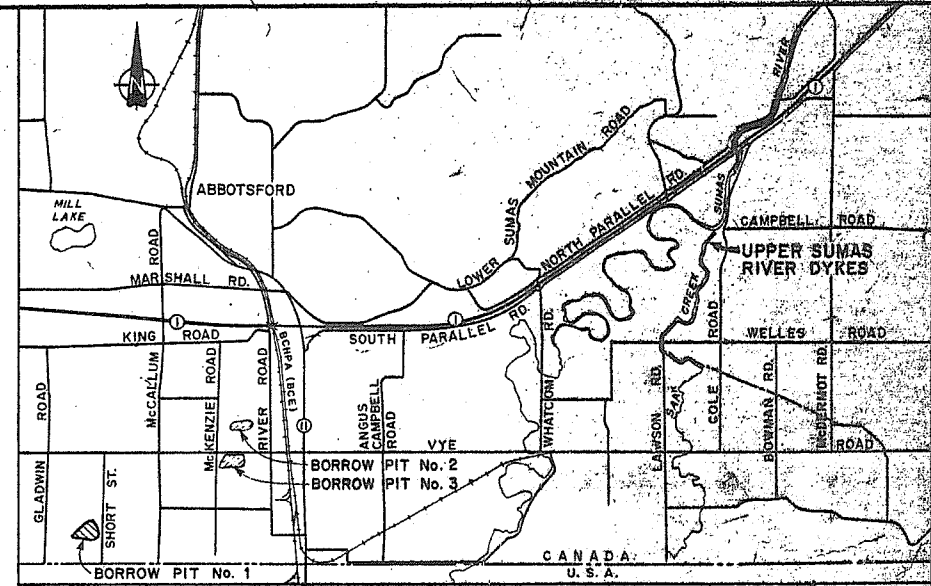
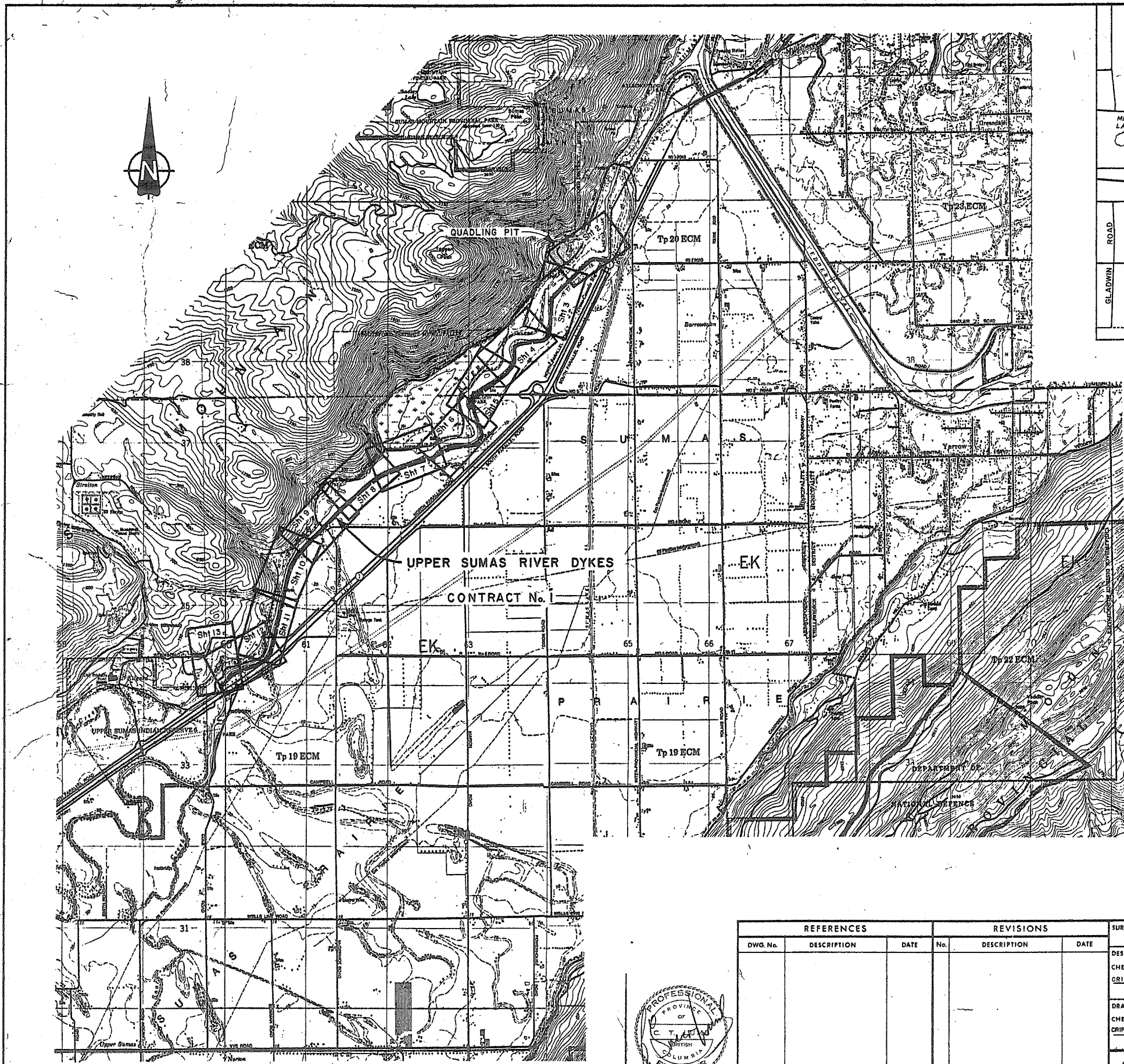


Upper Sumas River Dyke

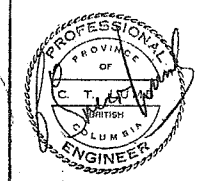
Contract 1

As Constructed



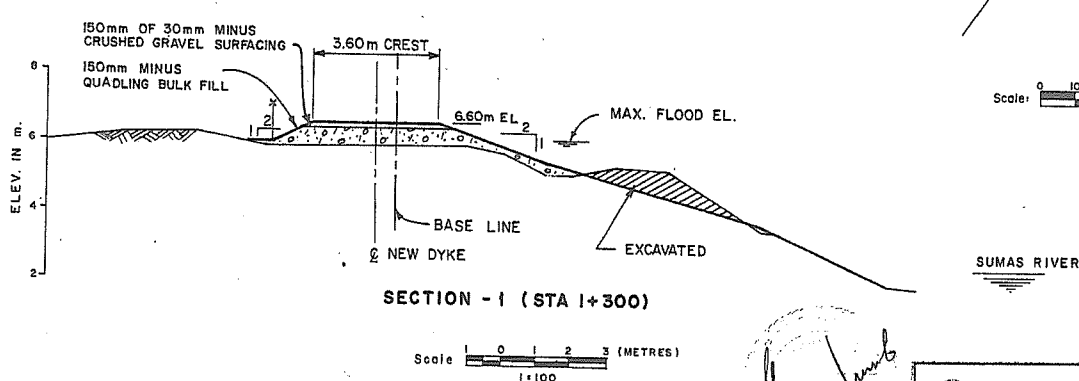
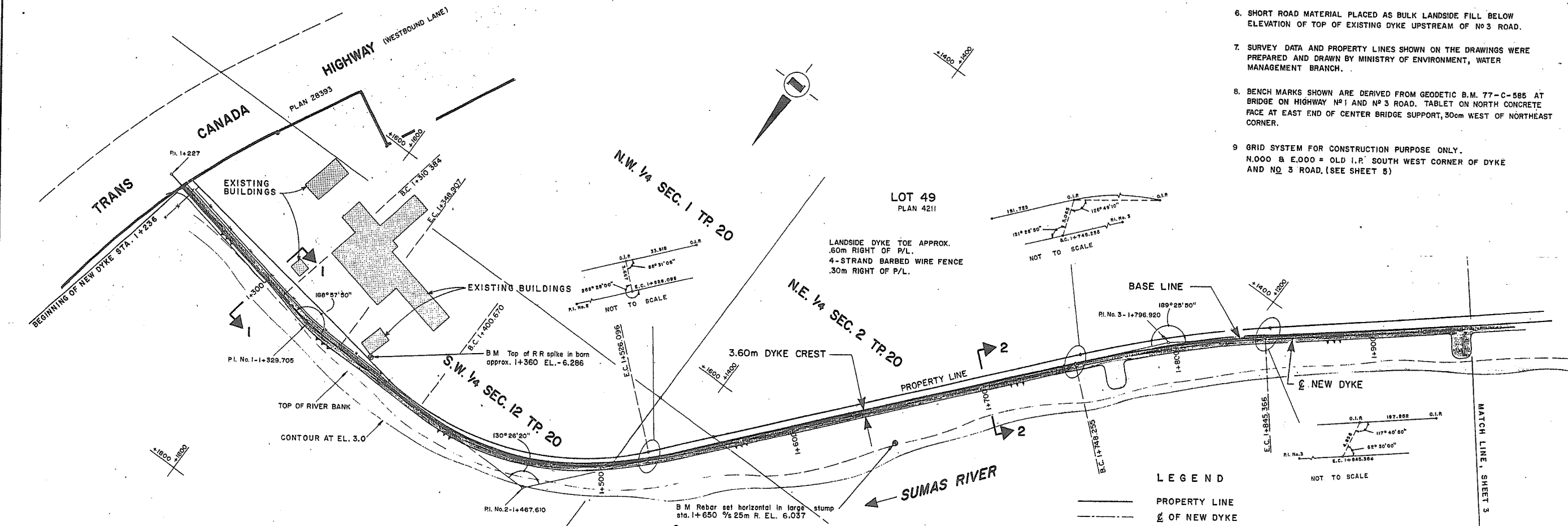
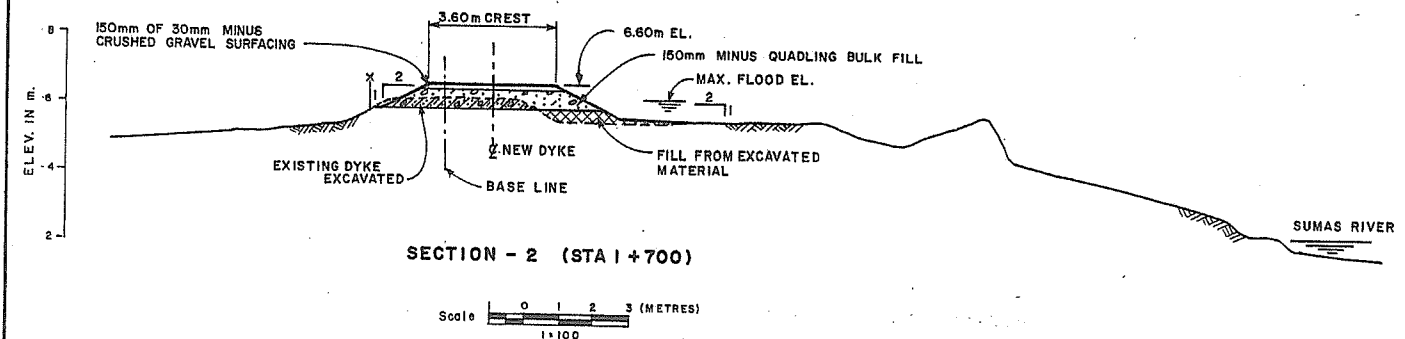
BORROW PITS 1, 2 & 3
LOCATION PLAN

AS CONSTRUCTED



| REFERENCES | | | REVISIONS | | |
|------------|-------------|------|-----------|-------------|------|
| DWG. No. | DESCRIPTION | DATE | No. | DESCRIPTION | DATE |
| | | | | | |
| | | | | | |

| | | |
|--|--|---|
| SURVEYED M. O. F. E. DATE 1983 DESIGNED CHECKED CRIPPEN CONSULTANTS LTD. DATE DRAWN CHECKED CRIPPEN CONSULTANTS LTD. DATE | Province of British Columbia Ministry of Environment WATER MANAGEMENT BRANCH 1983-1984 FLOOD CONTROL PROGRAM DISTRICT OF ABBOTSFORD CONTRACT No. 1 UPPER SUMAS RIVER DYKES KEY PLAN | FILE NO. P83-4 ENG. PROJECT NO. 10182-D1 NTS MAP NO. 926-1 SCALE AS SHOWN DRAWING NO. REV. NO. 5460-1-1 SHEET 1 OF 15 |
| [Signature] ENGINEER CRIPPEN CONSULTANTS DATE | [Signature] RECOMMENDED PROJECT MANAGER DATE | [Signature] APPROVED A/DIRECTOR DATE |



- GENERAL NOTES, STA. 1+236 TO 9+363**
- DIMENSIONS AND ELEVATIONS ARE IN METRES.
 - DYKE STATIONS AND OFF-SET DIMENSIONS ARE MEASURED FROM BASE LINE.
 - BASE LINE IS APPROXIMATELY CENTER LINE OF OLD PRE-CONSTRUCTION DYKE CREST AS PREVIOUSLY ESTABLISHED IN FIELD BY SURVEY.
 - FOR CREST ELEVATIONS REFER TO TABLE OF SETTING OUT DATA.
 - QUADLING PIT MATERIAL PLACED:
 - WHERE THE DYKE IS ENTIRELY RECONSTRUCTED,
 - WHERE THE NEW DYKE IS LOCATED ON THE RIVER SIDE OF THE EXISTING DYKE,
 - ELSEWHERE BETWEEN THE TOP OF THE EXISTING DYKE AFTER STRIPPING AND THE UNDERSIDE OF THE SURFACING OR MAXIMUM DESIGN WATER LEVEL AS DETERMINED BY THE ENGINEER IN THE FIELD.
 - SHORT ROAD MATERIAL PLACED AS BULK LANDSIDE FILL BELOW ELEVATION OF TOP OF EXISTING DYKE UPSTREAM OF NO 3 ROAD.
 - SURVEY DATA AND PROPERTY LINES SHOWN ON THE DRAWINGS WERE PREPARED AND DRAWN BY MINISTRY OF ENVIRONMENT, WATER MANAGEMENT BRANCH.
 - BENCH MARKS SHOWN ARE DERIVED FROM GEODETIC B.M. 77-C-585 AT BRIDGE ON HIGHWAY NO 1 AND NO 3 ROAD. TABLET ON NORTH CONCRETE FACE AT EAST END OF CENTER BRIDGE SUPPORT, 30m WEST OF NORTHEAST CORNER.
 - GRID SYSTEM FOR CONSTRUCTION PURPOSE ONLY. N.000 & E.000 = OLD I.P. SOUTH WEST CORNER OF DYKE AND NO 3 ROAD. (SEE SHEET 5)

LEGEND

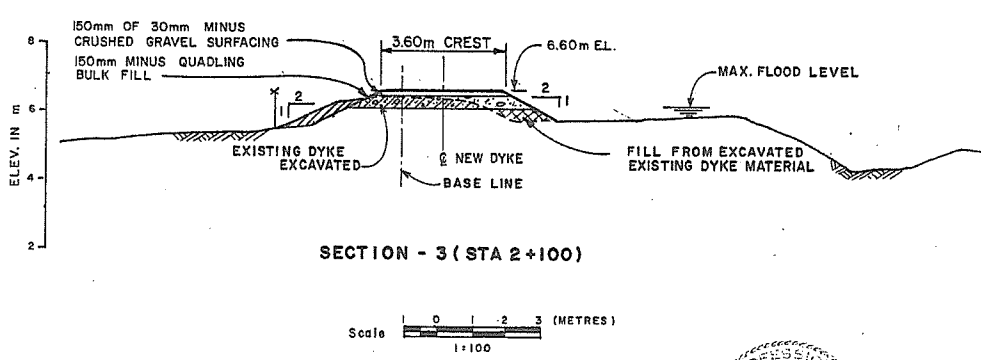
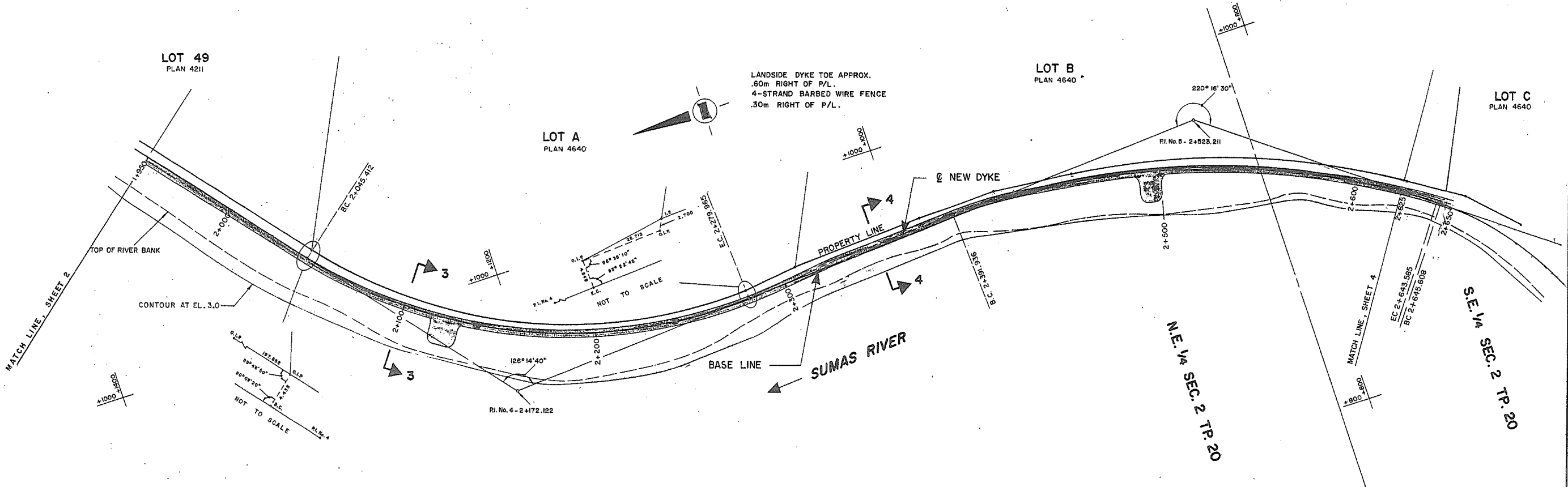
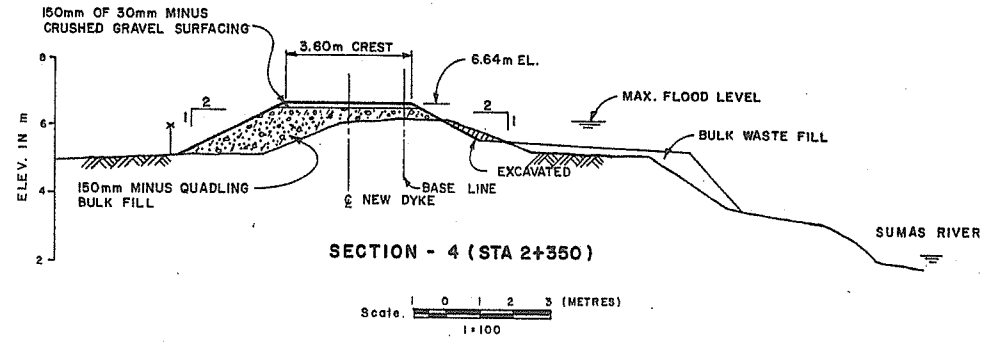
| | |
|--|-------------------------------|
| | PROPERTY LINE |
| | NEW DYKE |
| | BASE LINE |
| | FENCE LINE |
| | TOP OF RIVER BANK |
| | EXCAVATION OF EXISTING DYKE |
| | FILL FROM EXCAVATED DYKE |
| | QUADLING BULK FILL |
| | BULK FILL FROM SHORT ROAD PIT |

'AS CONSTRUCTED'

| REFERENCES | | | REVISIONS | | | SURVEYED | | Province of British Columbia | | FILE NO |
|------------|-------------|------|-----------|----------------------------------|---------|----------|----------|---------------------------------|-----------------------------|---------------------------|
| DWG. No. | DESCRIPTION | DATE | No. | DESCRIPTION | DATE | DATE | M. OF E. | Ministry of Environment | WATER MANAGEMENT BRANCH | P83-4 |
| | | | A. | AS CONSTRUCTED INFORMATION ADDED | 03/7/88 | | TL | 1983-1984 FLOOD CONTROL PROGRAM | | ENG. PROJECT NO. 10182-D5 |
| | | | | | | | | DISTRICT OF ABBOTSFORD | | NTS MAP NO. 926-1 |
| | | | | | | | | CONTRACT No. 1 | | SCALE AS SHOWN |
| | | | | | | | | UPPER SUMAS RIVER DYKES | | DRAWING NO. 5460-1-5 |
| | | | | | | | | PLAN AND SECTIONS | | REV. NO. A |
| | | | | | | | | STA. 1+236 TO STA. 1+950 | | SHEET 2 OF 15 |
| | | | | | | | | ENGINEER | RECOMMENDED PROJECT MANAGER | APPROVED A/DIRECTOR |

CRIPPEN CONSULTANTS
NORTH VANCOUVER, B.C.

EAST FILE CORP. IRVINE, CA NUMBER EPH22



NOTES
1. FOR GENERAL NOTES AND LEGEND, SEE SHEET 2

'AS CONSTRUCTED'

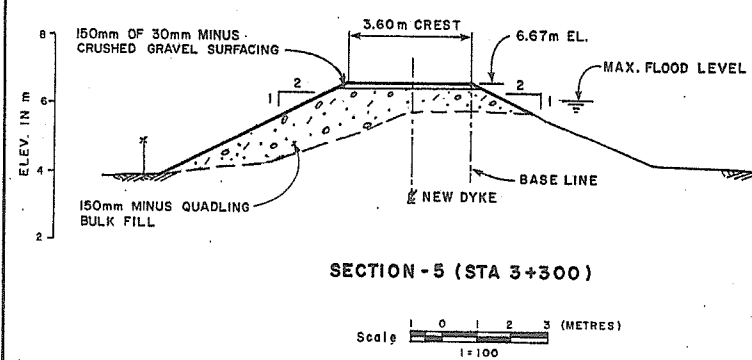
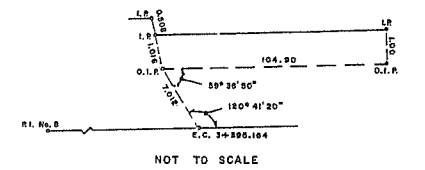
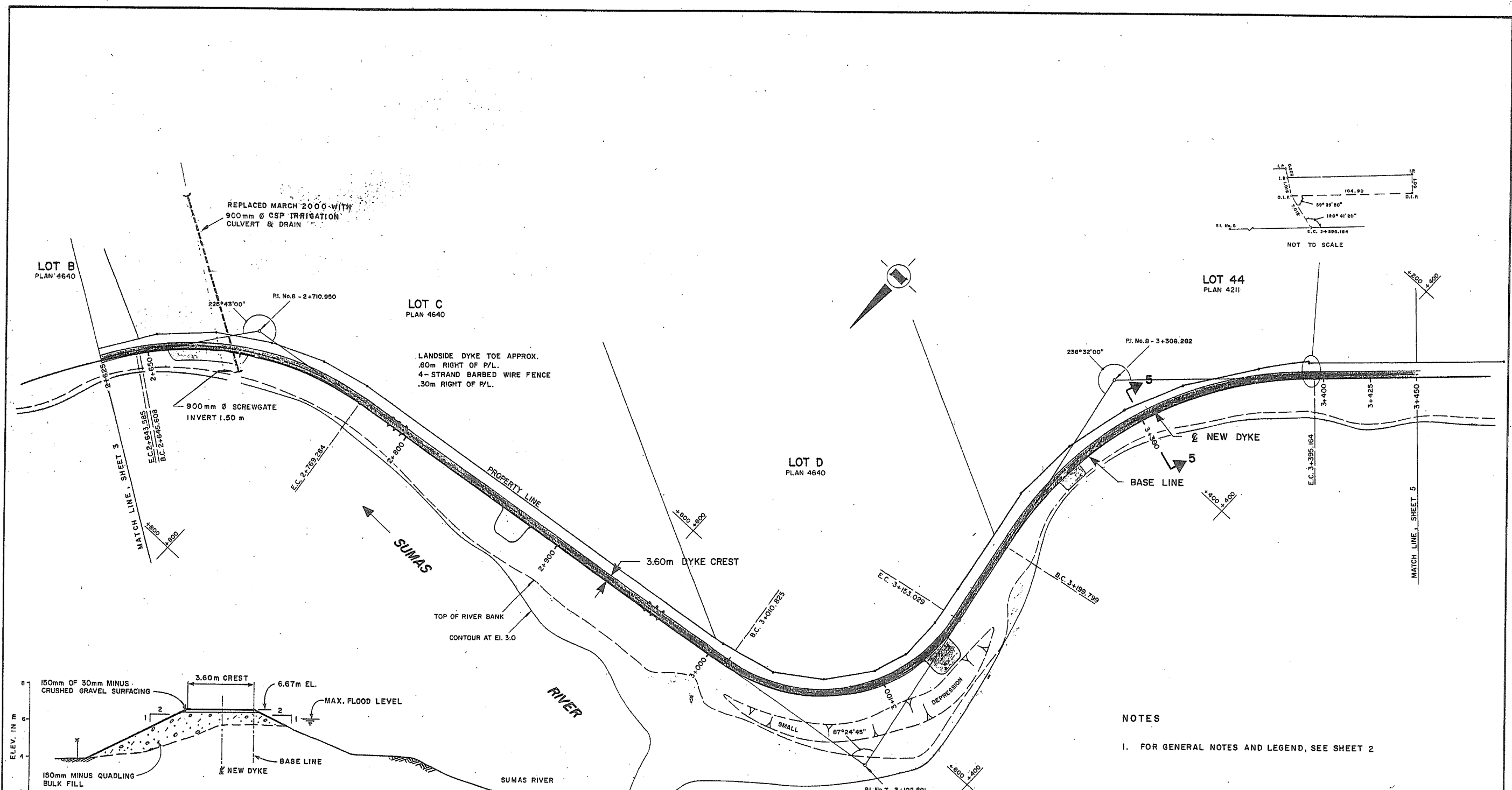
| REFERENCES | | | REVISIONS | | |
|------------|-------------|------|-----------|----------------------------------|-------------|
| DWG. No. | DESCRIPTION | DATE | No. | DESCRIPTION | DATE |
| | | | A | AS CONSTRUCTED INFORMATION ADDED | 03 / 7 / 88 |

| | | | |
|---|---|---|--|
| SURVEYED DATE DESIGNED CHECKED DATE DRAWN CHECKED DATE | M D F E 1983 T L HNC & TB GWS 1988-05-13 | Province of British Columbia Ministry of Environment WATER MANAGEMENT BRANCH 1983-1984 FLOOD CONTROL PROGRAM DISTRICT OF ABBOTSFORD CONTRACT No. 1 UPPER SUMAS RIVER DYKES PLAN AND SECTIONS STA. 1 + 950 TO STA. 2 + 625 | FILE NO. P83-4 ENG. PROJECT NO. 10182-D.6 NTS MAP NO. 926-1 SCALE AS SHOWN DRAWING NO. REV. NO. 5460-1-6 A SHEET 3 OF 15 |
|---|---|---|--|

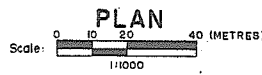
CRIPPEN CONSULTANTS
NORTH VANCOUVER, B.C.



EAST FILE CORP. IRVING, CA HANGGE EPH2



NOTES
 1. FOR GENERAL NOTES AND LEGEND, SEE SHEET 2



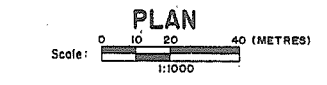
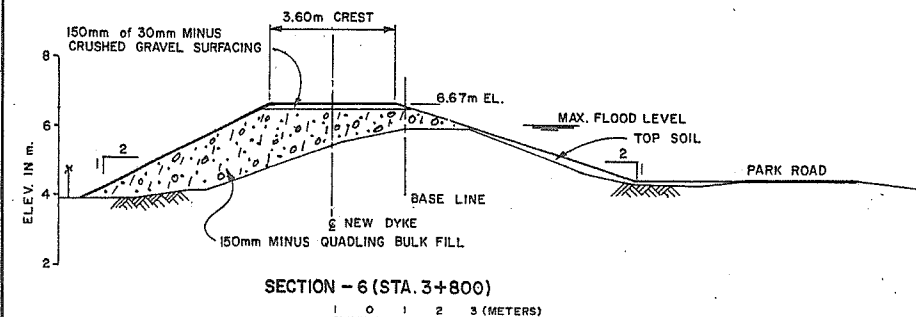
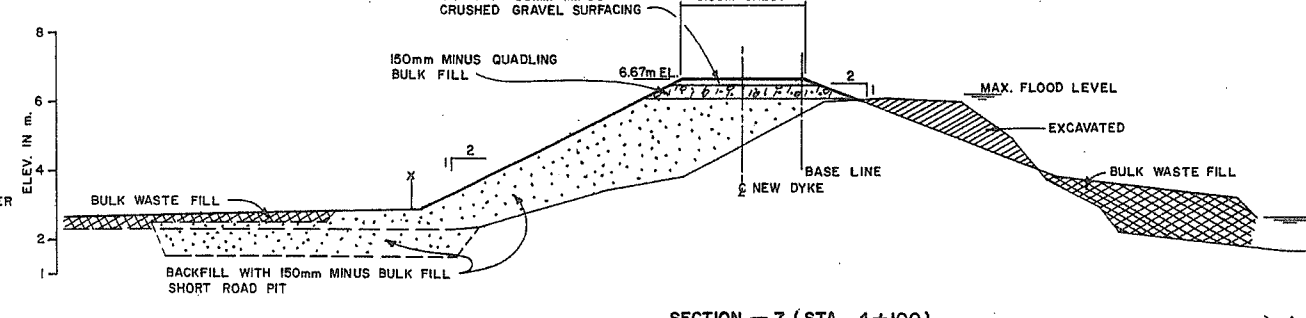
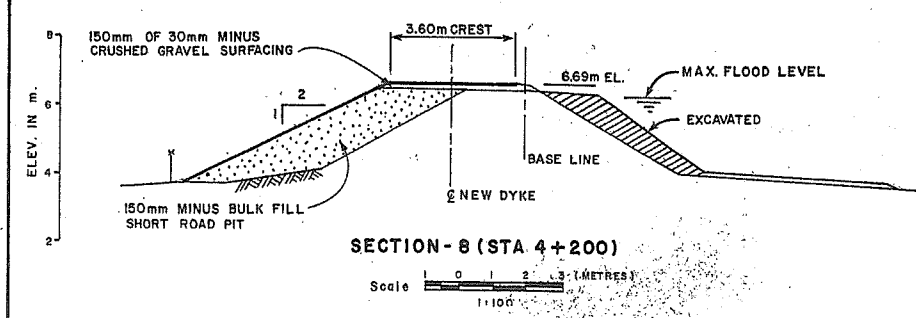
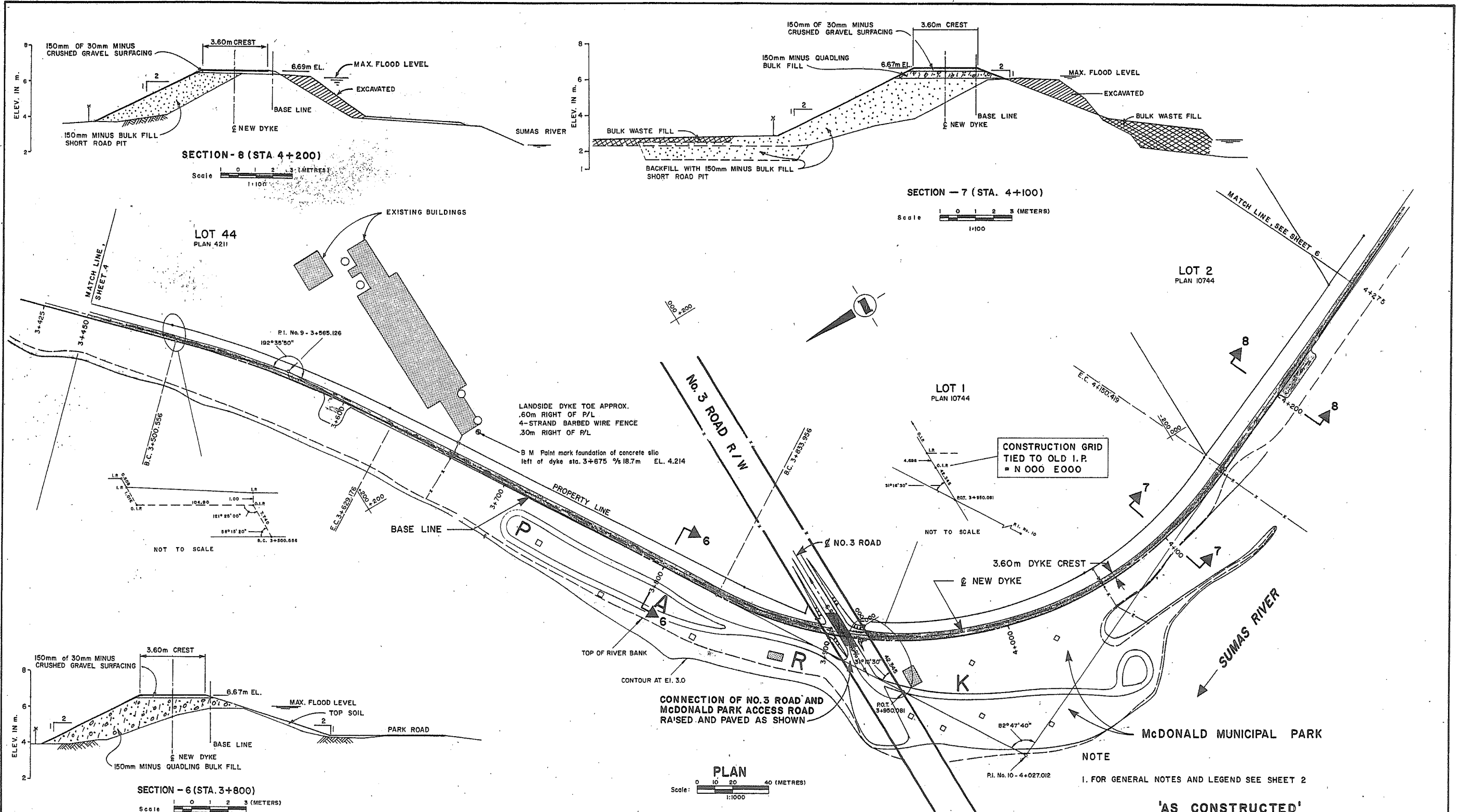
'AS CONSTRUCTED'



CRIPPEN CONSULTANTS
 NORTH VANCOUVER, B.C.

| REFERENCES | | | REVISIONS | | | SURVEYED M OF E | |
|------------|-------------|------|-----------|----------------------------------|-------------|--------------------------|------|
| DWG. No. | DESCRIPTION | DATE | No. | DESCRIPTION | DATE | DATE | DATE |
| | | | A | AS CONSTRUCTED INFORMATION ADDED | 03 / 7 / 88 | TL | 1983 |
| | | | | | | HNC & TB | |
| | | | | | | GWS | |
| | | | | | | CRIPPEN CONSULTANTS LTD. | |
| | | | | | | | |

| | | |
|--|--|--|
| Province of British Columbia | Ministry of Environment WATER MANAGEMENT BRANCH | FILE NO P83-4 |
| 1983-1984 FLOOD CONTROL PROGRAM DISTRICT OF ABBOTSFORD CONTRACT No. 1 | | ENG. PROJECT NO 10182-D-7 |
| UPPER SUMAS RIVER DYKES PLAN AND SECTION STA. 2+625 TO STA. 3+450 | | NTS MAP NO. 92G-1 |
| SCALE AS SHOWN | | DRAWING NO. REV. NO. 5460-1-7 A |
| ENGINEER <i>[Signature]</i> DATE 4/1/88 | RECOMMENDED PROJECT MANAGER <i>[Signature]</i> DATE 1988-05-10 | APPROVED A/DIRECTOR <i>[Signature]</i> DATE 16-05-88 |
| SHEET 4 OF 15 | | |



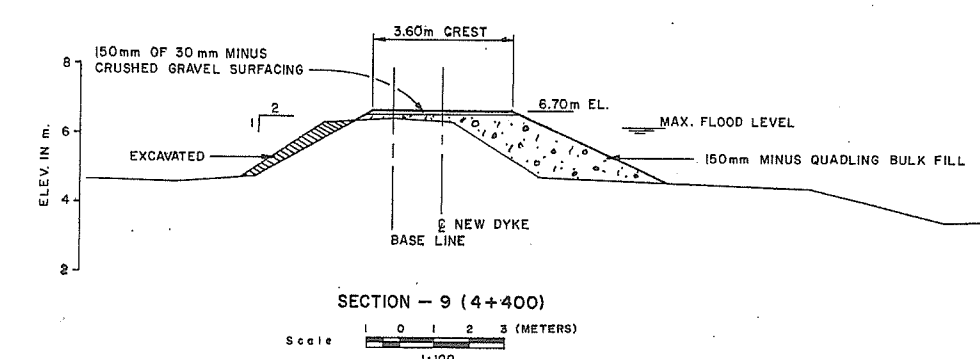
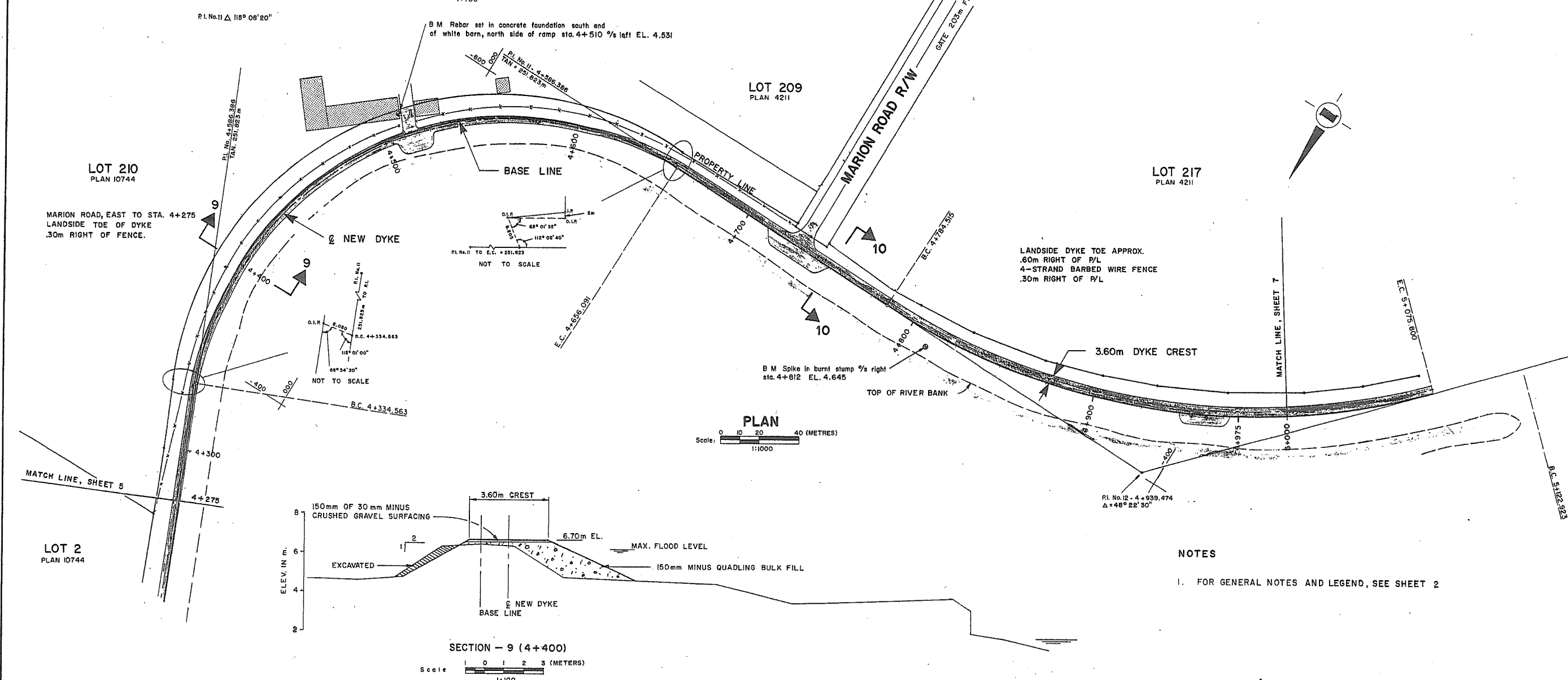
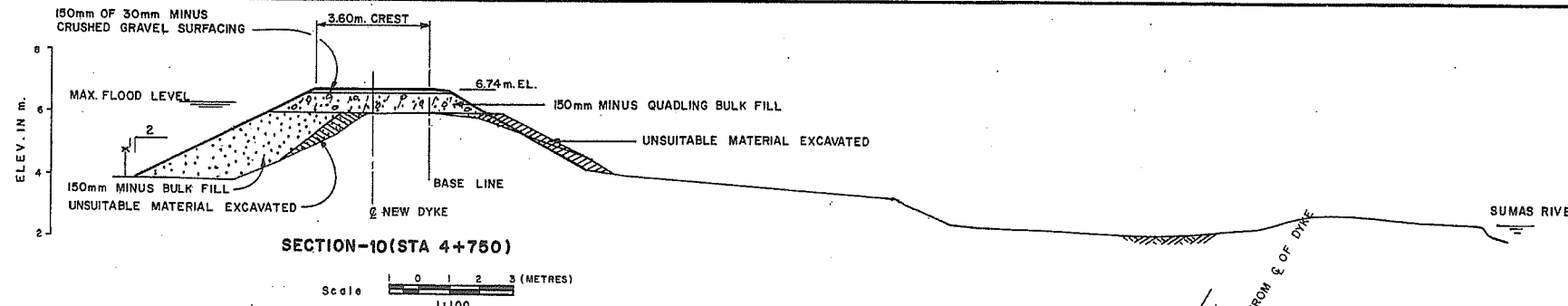
| REFERENCES | | | REVISIONS | | |
|------------|-------------|------|-----------|----------------------------------|---------|
| DWG. No. | DESCRIPTION | DATE | No. | DESCRIPTION | DATE |
| | | | A | AS CONSTRUCTED INFORMATION ADDED | 03/7/88 |

| | | | |
|-------------------------------------|----------------------------------|---|---|
| DESIGNED TL | DATE 1983 | Province of British Columbia Ministry of Environment WATER MANAGEMENT BRANCH | FILE NO. P83-4 |
| CHECKED CRIPPEN CONSULTANTS LTD. | DATE | | 1983-1984 FLOOD CONTROL PROGRAM DISTRICT OF ABBOTSFORD CONTRACT No. 1 |
| DRAWN HNC & TB | DATE | UPPER SUMAS RIVER DYKES PLAN AND SECTIONS STA. 3 + 450 TO STA. 4 + 275 | ENG. PROJECT NO. 10182-D 8 |
| CHECKED GWS | DATE | | NTS MAP NO. 92G-1 |
| CRIPPEN CONSULTANTS LTD. | DATE | SCALE AS SHOWN | DRAWING NO. REV. NO. 5460-1-8 A |
| ENGINEER CRIPPEN CONSULTANTS DATE | RECOMMENDED PROJECT MANAGER DATE | APPROVED A/DIRECTOR | SHEET 5 OF 15 |



CRIPPEN CONSULTANTS
NORTH VANCOUVER, B.C.

EAST FILE CORP. IRVINE, CA



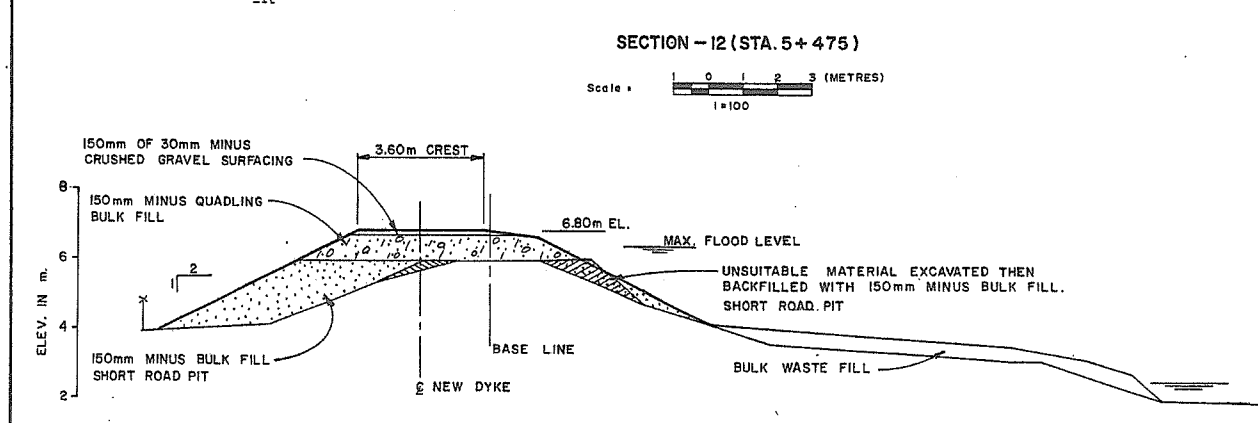
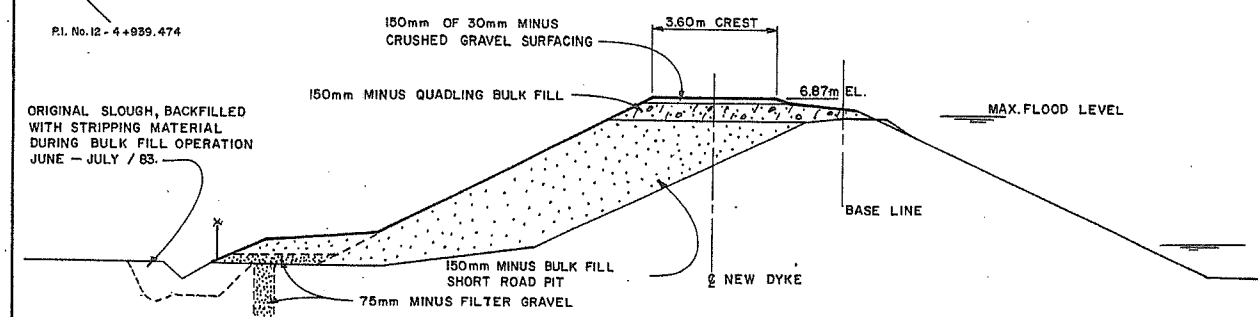
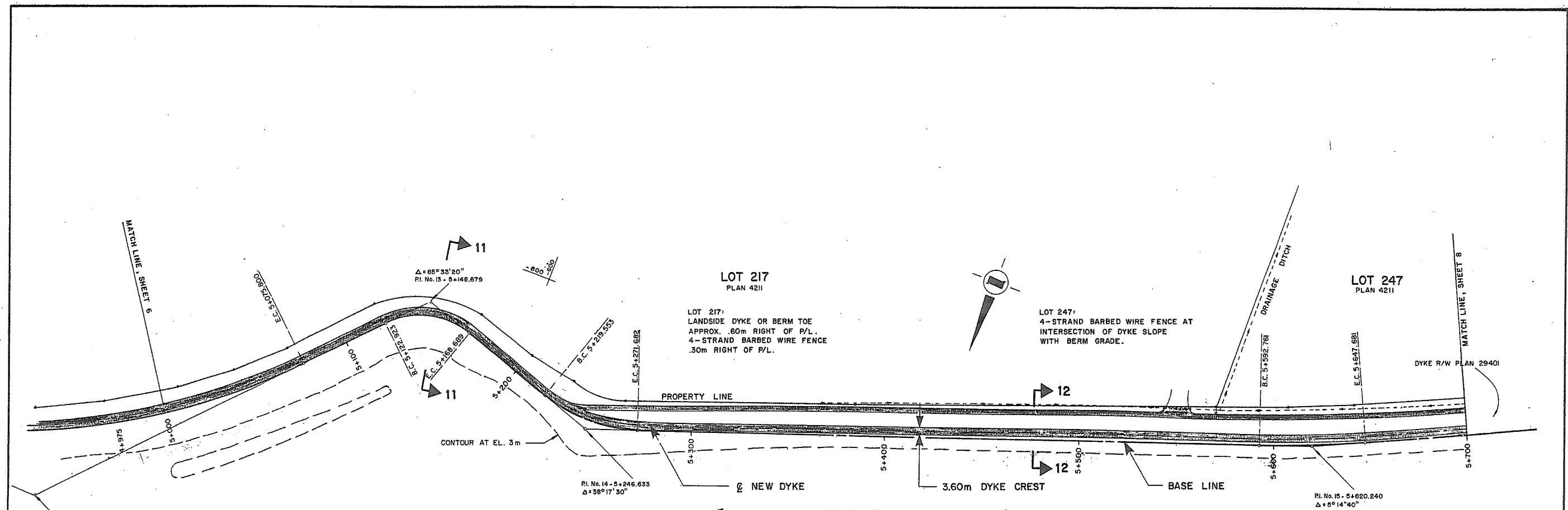
NOTES
1. FOR GENERAL NOTES AND LEGEND, SEE SHEET 2

'AS CONSTRUCTED'



CRIPPEN CONSULTANTS
NORTH VANCOUVER, B.C.

| REFERENCES | | | REVISIONS | | | SURVEYED M.O.F.E. | | Province of British Columbia Ministry of Environment WATER MANAGEMENT BRANCH | | FILE NO. |
|------------|-------------|------|-----------|----------------------------------|---------|--------------------------|----------|--|------|---------------------------------|
| DWG. No. | DESCRIPTION | DATE | No. | DESCRIPTION | DATE | DATE | DATE | 1983 | 1983 | P83-4 |
| | | | A | AS CONSTRUCTED INFORMATION ADDED | 03/7/88 | DESIGNED | T L | | | ENG. PROJECT NO. 10182-D 9 |
| | | | | | | CHECKED | HNC & TB | | | NTS MAP NO. 926-1 |
| | | | | | | CRIPPEN CONSULTANTS LTD. | G W S | | | SCALE AS SHOWN |
| | | | | | | DATE | | | | DRAWING NO. REV. NO. 5460-1-9 A |
| | | | | | | DATE | | | | SHEET 6 OF 15 |
| | | | | | | DATE | | | | |



- NOTES**
- FOR GENERAL NOTES AND LEGEND, SEE SHEET 2
 - STA. 5+250 TO STA. 6+700
LANDSIDE DRAINAGE BERM CONSTRUCTED TO CONTROL TOE SEEPAGE AND BOILING.
 - STA. 5+350 TO STA. 6+550
CUT-OFF TRENCH EXCAVATED UNDER BERM TO WATER-BEARING SAND LAYER AND BACKFILLED WITH FILTER GRAVEL.

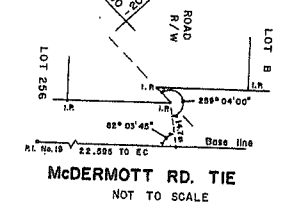
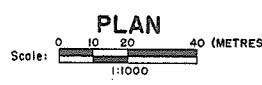
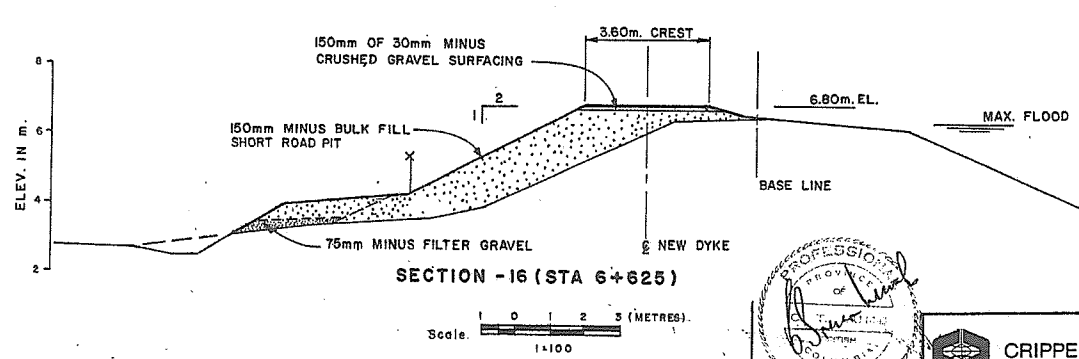
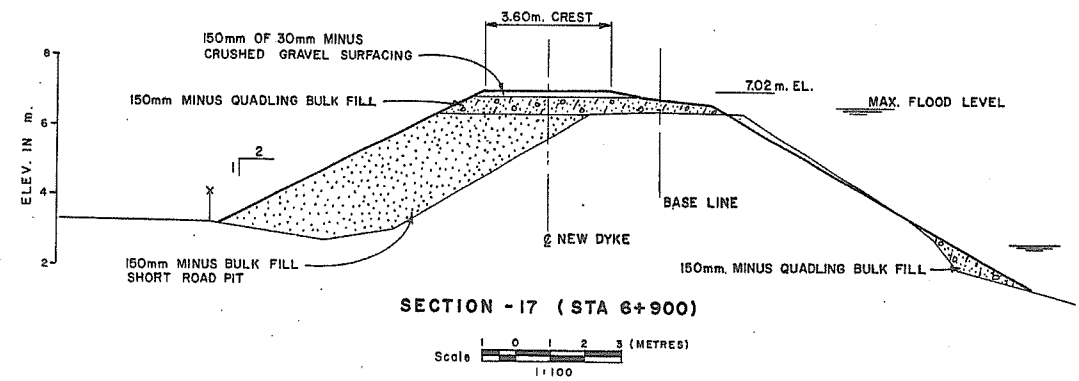
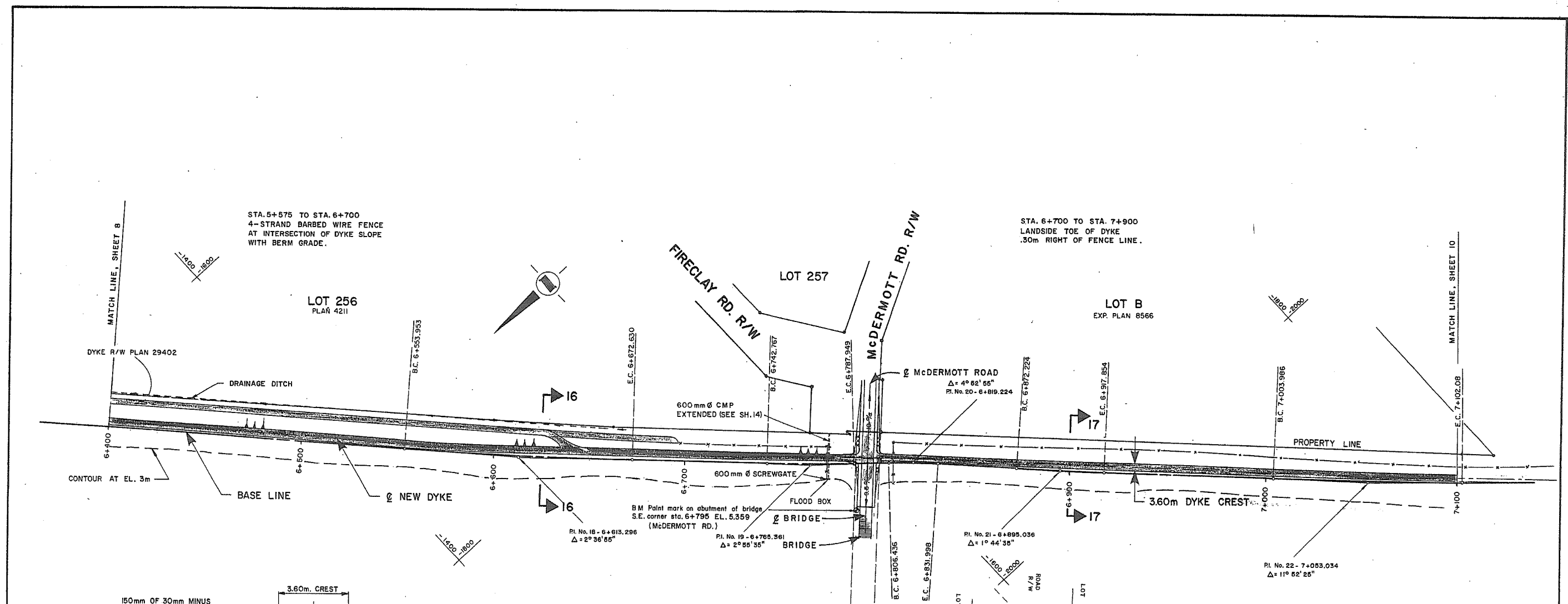
'AS CONSTRUCTED'



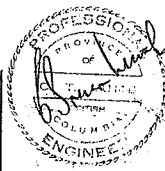
CRIPPEN CONSULTANTS
NORTH VANCOUVER, B.C.

| REFERENCES | | REVISIONS | |
|------------|-------------|-----------|---|
| DWG. No. | DESCRIPTION | No. | DATE |
| | | A | AS CONSTRUCTION INFORMATION ADDED 05/7/88 |

| | | | |
|--|--|---|---|
| SURVEYED DATE 1983 | M. O. F. E. TL | Province of British Columbia Ministry of Environment WATER MANAGEMENT BRANCH | FILE NO. P83-4 |
| DESIGNED CHECKED CRIPPEN CONSULTANTS LTD. DATE | DRAWN CHECKED CRIPPEN CONSULTANTS LTD. DATE | | 1983-1984 FLOOD CONTROL PROGRAM DISTRICT OF ABBOTSFORD CONTRACT No. 1 |
| DRAWN: HNC & TB CHECKED: GWS CRIPPEN CONSULTANTS LTD. | | UPPER SUMAS RIVER DYKES PLAN AND SECTIONS STA. 5+000 TO STA. 5+700 | NTS MAP NO. 926-1 |
| ENGINEER: [Signature] 10-22-88 RECOMMENDED PROJECT MANAGER DATE | | | SCALE AS SHOWN |
| APPROVED A/DIRECTOR DATE [Signature] 16-05-88 | | | SHEET 7 OF 15 |



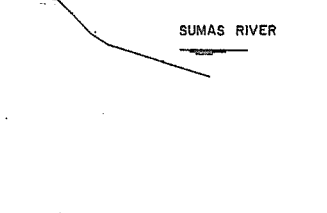
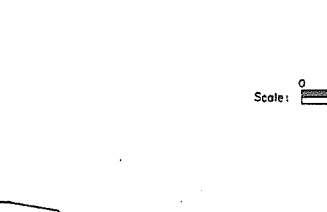
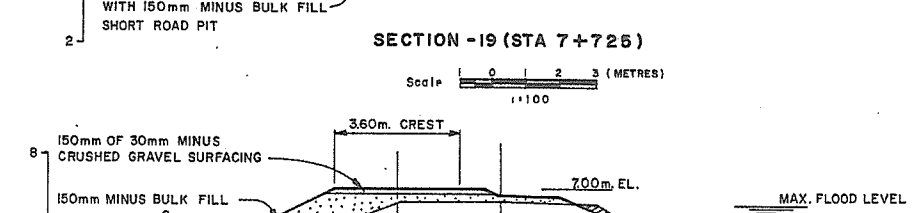
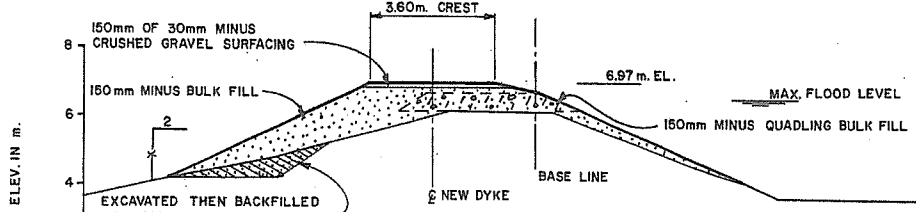
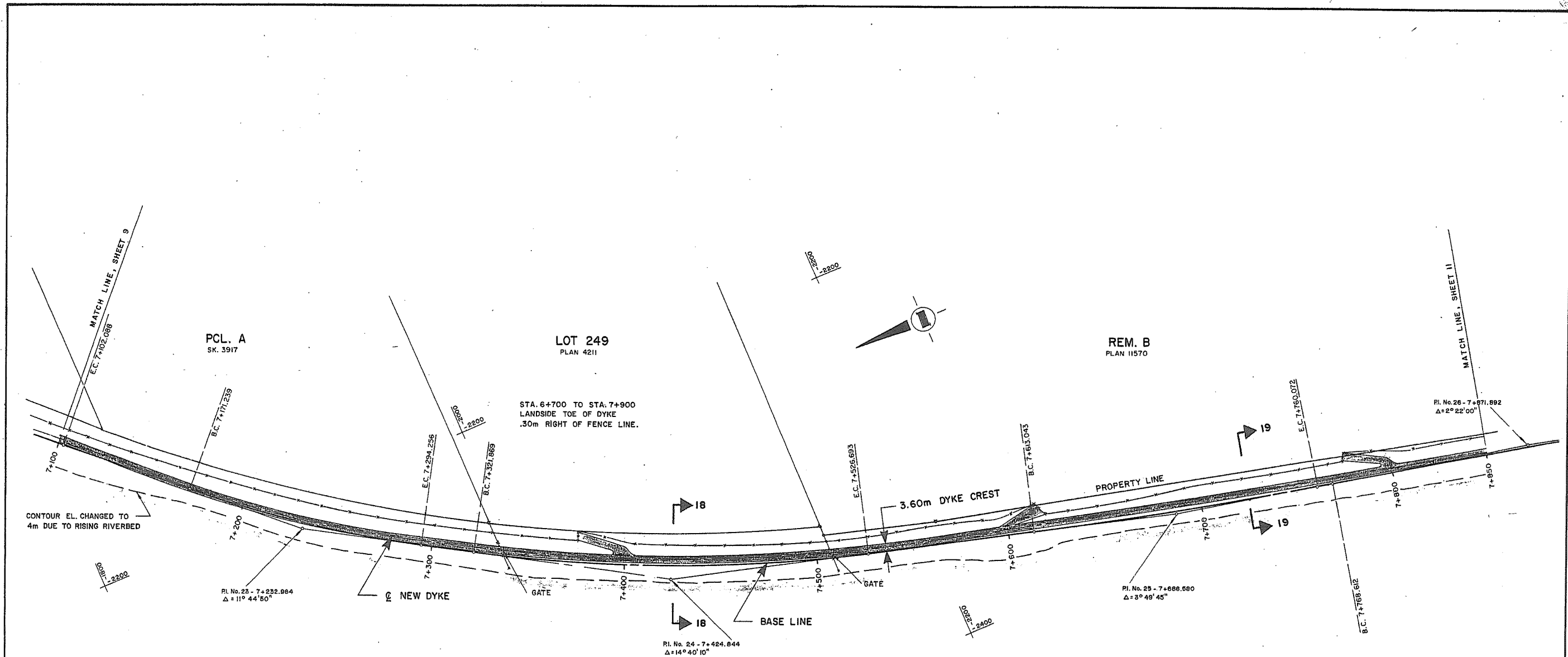
NOTES
1. FOR GENERAL NOTES AND LEGEND, SEE SHEET 2



CRIPPEN CONSULTANTS
NORTH VANCOUVER, B.C.

| REFERENCES | | | REVISIONS | | |
|------------|-------------|------|-----------|----------------------------------|---------|
| DWG No. | DESCRIPTION | DATE | No. | DESCRIPTION | DATE |
| | | | A | AS CONSTRUCTED INFORMATION ADDED | 03/7/88 |

| | | | | |
|-------------------------------------|--------|---|--|-------------------------------------|
| SURVEYED DATE 1985 | M OF E | Province of British Columbia | Ministry of Environment WATER MANAGEMENT BRANCH | FILE NO P83-4 |
| DESIGNED TL | | 1983-1984 FLOOD CONTROL PROGRAM DISTRICT OF ABBOTSFORD CONTRACT No. 1 | | ENG. PROJECT NO 10182-D12 |
| CHECKED CRIPPEN CONSULTANTS LTD. | | UPPER SUMAS RIVER DYKES PLAN AND SECTIONS STA. 6+400 TO STA. 7+100 | | NTS MAP NO. 92G-1 |
| DRAWN HNC & TB | | | | SCALE AS SHOWN |
| CHECKED GWS | | | | DRAWING NO. REV. NO. 5460-1-12 A |
| CRIPPEN CONSULTANTS LTD. | | | | SHEET 9 OF 15 |
| DATE | | RECOMMENDED PROJECT MANAGER DATE | APPROVED A/DIRECTOR | DATE |

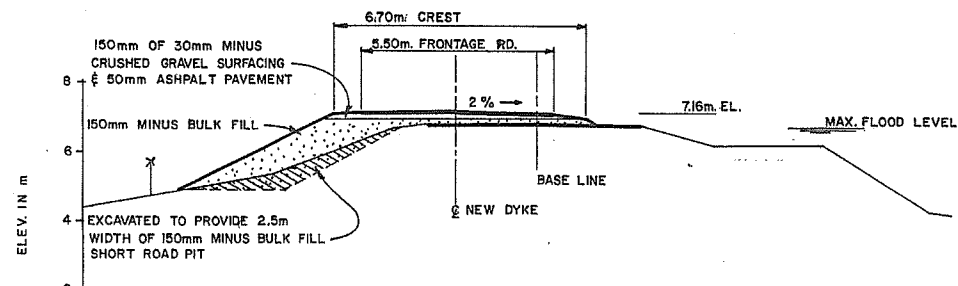


CRIPPEN CONSULTANTS
NORTH VANCOUVER, B.C.

NOTES
1. FOR GENERAL NOTES AND LEGEND, SEE SHEET 2

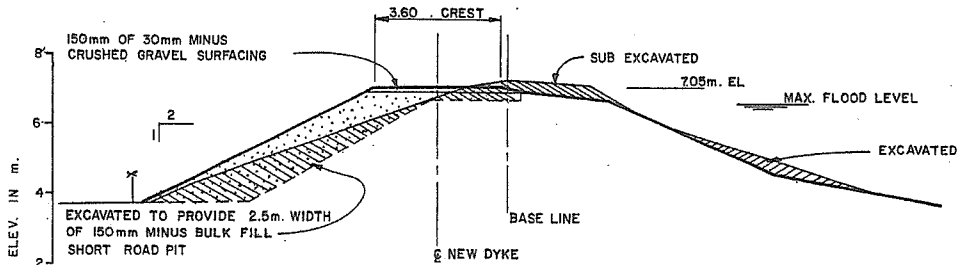
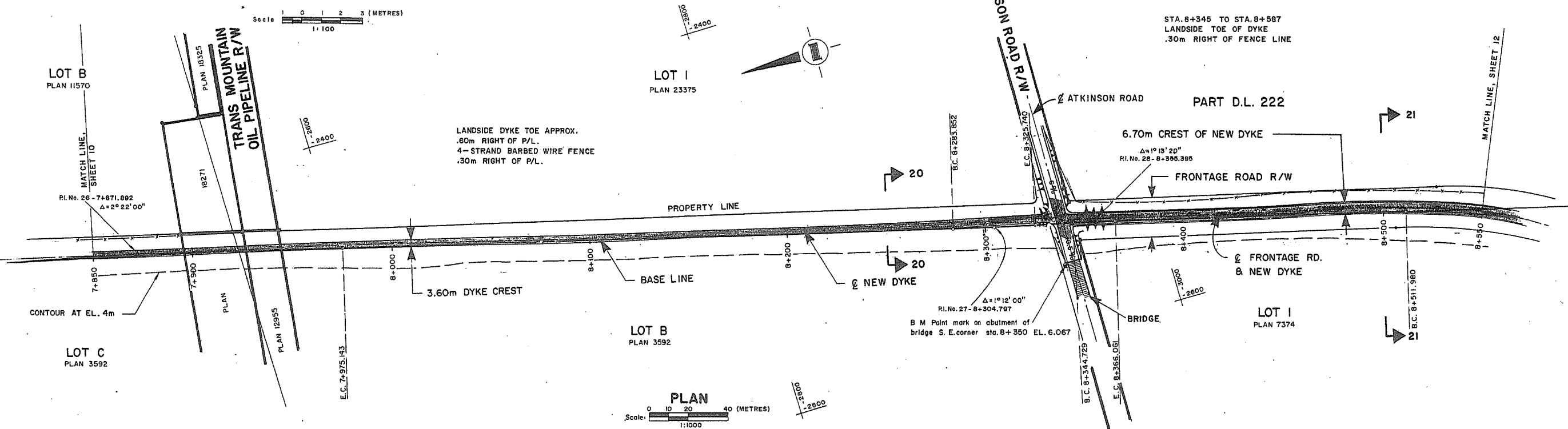
| REFERENCES | | | REVISIONS | | |
|------------|-------------|------|-----------|----------------------------------|---------|
| DWG. No. | DESCRIPTION | DATE | No. | DESCRIPTION | DATE |
| | | | A | AS CONSTRUCTED INFORMATION ADDED | 03/7/88 |

| | | | | |
|-------------------------------------|--------|---|---|--|
| SURVEYED DATE 1983 | M OF E | Province of British Columbia | Ministry of Environment WATER MANAGEMENT BRANCH | FILE NO P83-4 |
| DESIGNED T.L. | | | | ENG. PROJECT NO. 10182-D13 |
| CHECKED CRIPPEN CONSULTANTS LTD. | | 1983-1984 FLOOD CONTROL PROGRAM DISTRICT OF ABBOTSFORD CONTRACT No. 1 | | NTS MAP NO. 92G-1 |
| DRAWN HNC & TB | | UPPER SUMAS RIVER DYKES PLAN AND SECTIONS STA. 7+100 TO STA. 7+850 | | SCALE AS SHOWN |
| CHECKED GWS | | | | DRAWING NO. REV. NO. 5460-1-13 A |
| DATE | | RECOMMENDED PROJECT MANAGER DATE <i>[Signature]</i> 16.05.88 | APPROVED A/DIRECTOR DATE <i>[Signature]</i> 16.05.88 | SHEET 10 OF 15 |



SECTION -21 (STA 8+500)

Scale 1:100 (METRES)



SECTION -20 (STA 8+250)

Scale 1:100 (METRES)

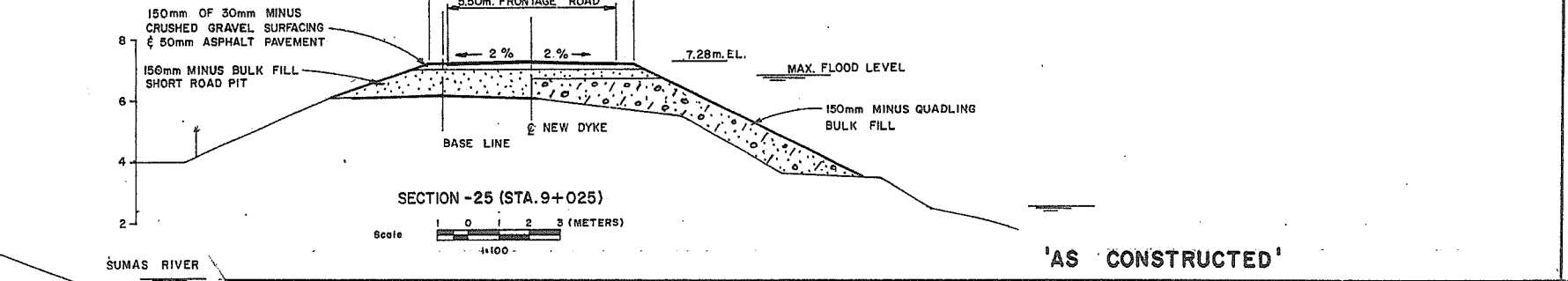
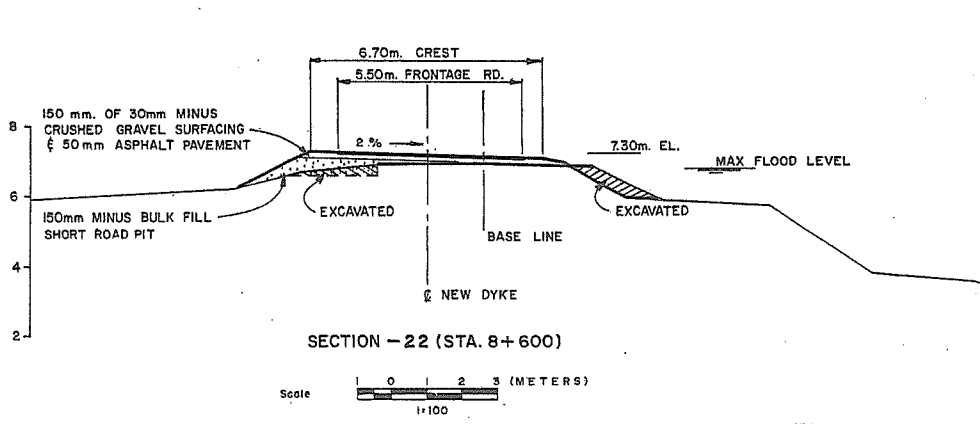
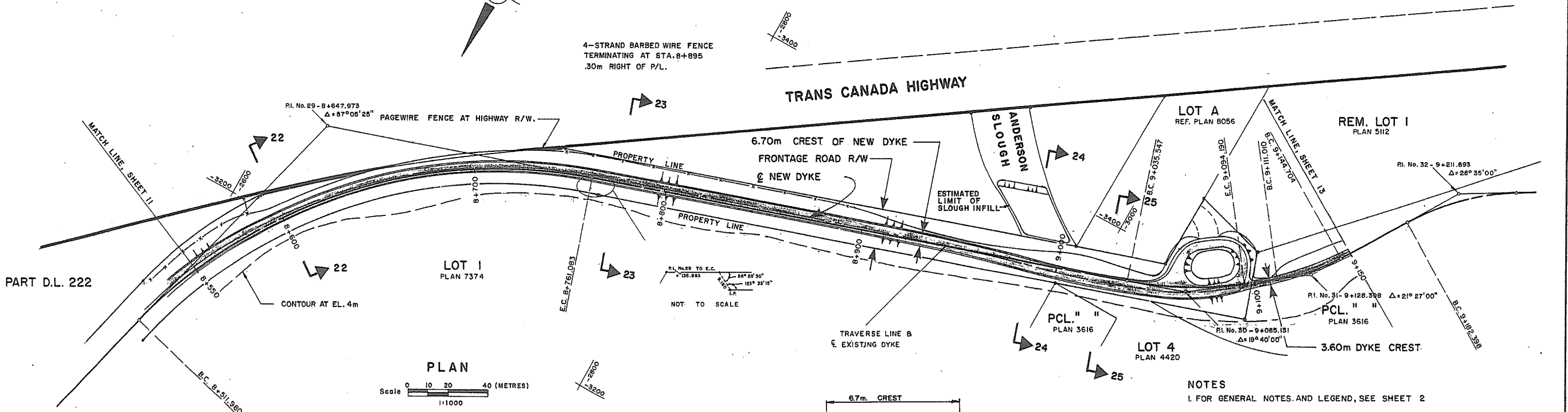
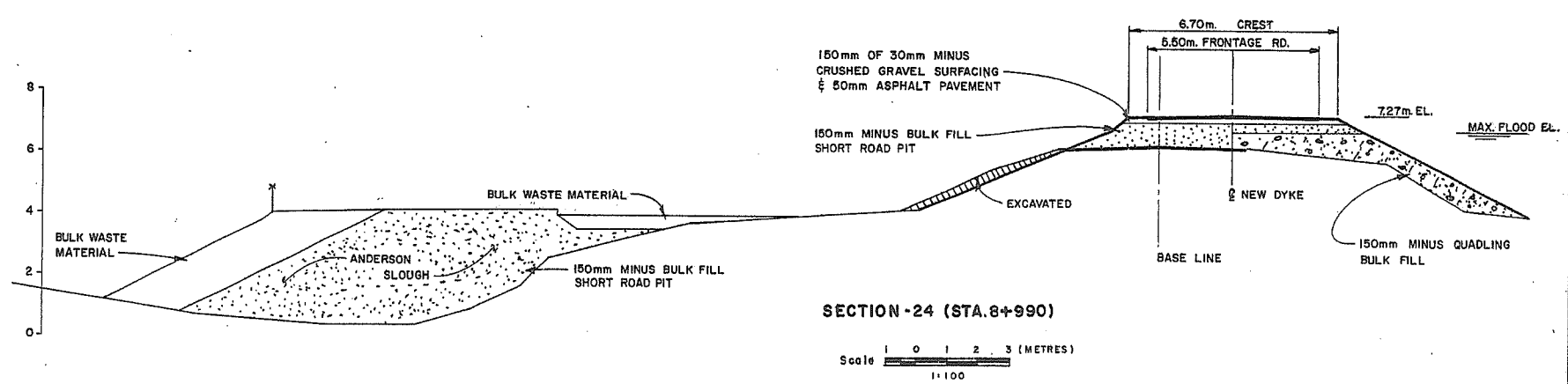
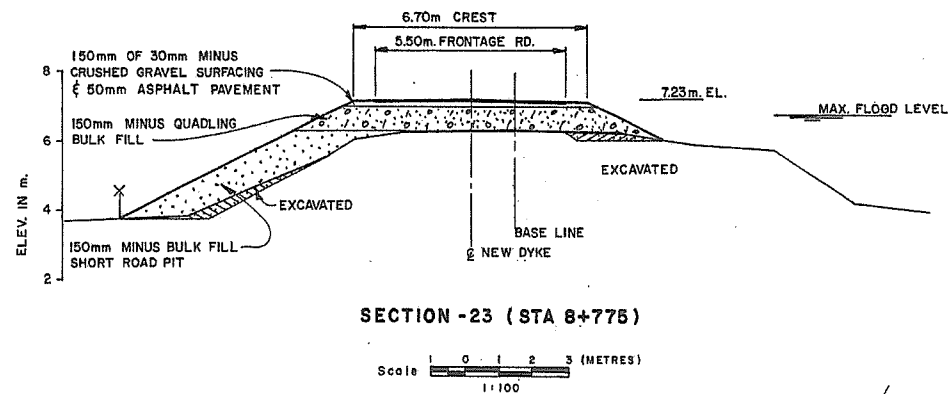
NOTES
1. FOR GENERAL NOTES AND LEGEND, SEE SHEET 2

'AS CONSTRUCTED'



CRIPPEN CONSULTANTS
NORTH VANCOUVER, B.C.

| REFERENCES | | | REVISIONS | | | SURVEYED | | Province of British Columbia Ministry of Environment WATER MANAGEMENT BRANCH | | FILE NO. |
|------------|-------------|------|-----------|----------------------------------|---------|----------|--------|--|------|---|
| DWG. No. | DESCRIPTION | DATE | No. | DESCRIPTION | DATE | DATE | M OF E | 1983 | 1983 | P83-4 |
| | | | A | AS CONSTRUCTED INFORMATION ADDED | 03/7/88 | | T.L. | | | 1983-1984 FLOOD CONTROL PROGRAM DISTRICT OF ABBOTSFORD CONTRACT No. 1 |
| | | | | | | | | | | ENG. PROJECT NO. 10182-D14 |
| | | | | | | | | | | NTS MAP NO. 926-1 |
| | | | | | | | | | | SCALE AS SHOWN |
| | | | | | | | | | | DRAWING NO. REV. NO. 5460-1-14 A |
| | | | | | | | | | | SHEET 11 OF 15 |



NOTES
1. FOR GENERAL NOTES AND LEGEND, SEE SHEET 2

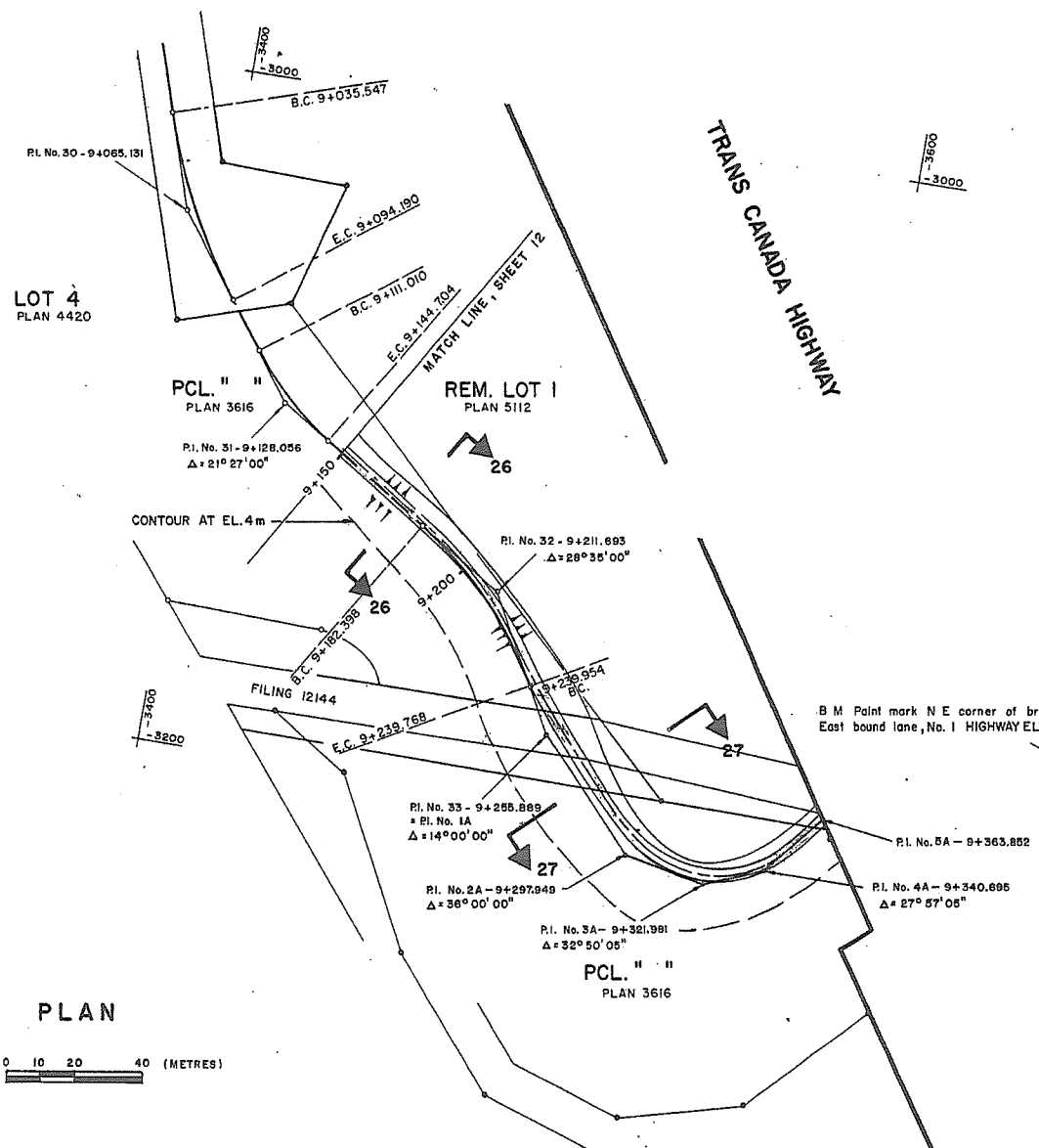
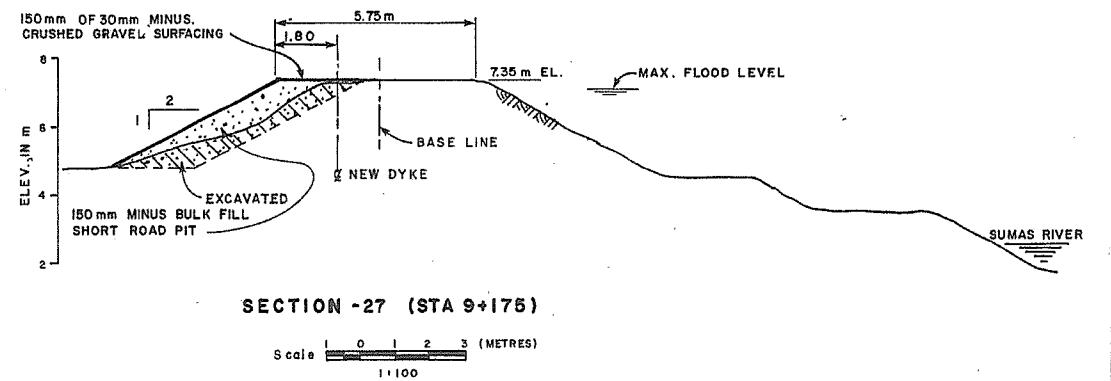
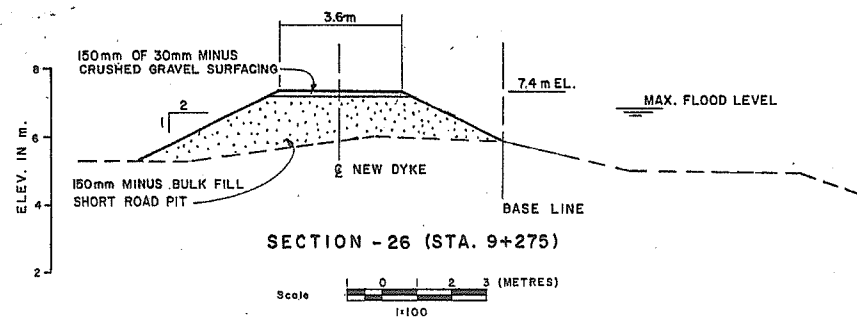
'AS CONSTRUCTED'



CRIPPEN CONSULTANTS
NORTH VANCOUVER, B.C.

| REFERENCES | | | REVISIONS | | |
|------------|-------------|------|-----------|----------------------------------|---------|
| DWG. No. | DESCRIPTION | DATE | No. | DESCRIPTION | DATE |
| | | | A | AS CONSTRUCTED INFORMATION ADDED | 05/7/88 |

| | | | | |
|--|--|---|--|---|
| SURVEYED CRIPPEN ENG. LTD. DATE DESIGNED T.L. CHECKED CRIPPEN CONSULTANTS LTD. DATE DRAWN HNC & TB CHECKED GWS CRIPPEN CONSULTANTS LTD. DATE | | Province of British Columbia Ministry of Environment WATER MANAGEMENT BRANCH 1983-1984 FLOOD CONTROL PROGRAM DISTRICT OF ABBOTSFORD CONTRACT No. 1 | | FILE NO P83-4 ENG. PROJECT NO. 10182-D15 NTS MAP NO. 926-1 SCALE AS SHOWN DRAWING NO: REV. NO. 5460-1-15 A SHEET 12 OF 15 |
| ENGINEER <i>[Signature]</i> 16/05/98 CRIPPEN CONSULTANTS LTD. | | RECOMMENDED PROJECT MANAGER/DATE <i>[Signature]</i> 16-05-98 | | APPROVED A/DIRECTOR <i>[Signature]</i> 16-05-98 |



PLAN
Scale 0 10 20 40 (METRES)

NOTES
1 FOR GENERAL NOTES AND LEGEND, SEE SHEET 2

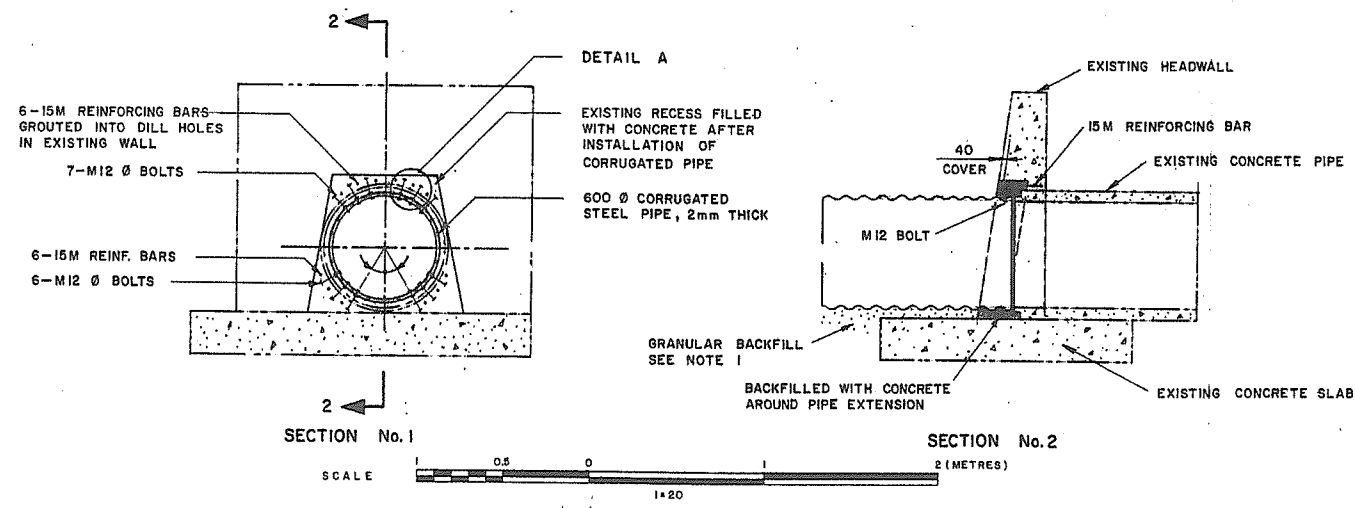
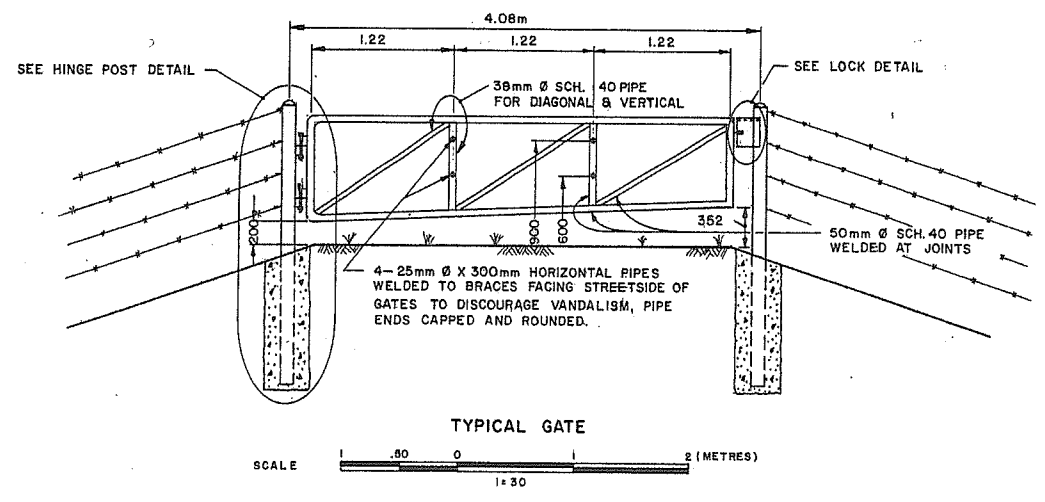
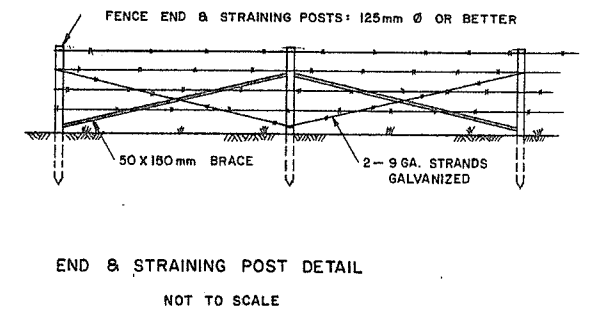
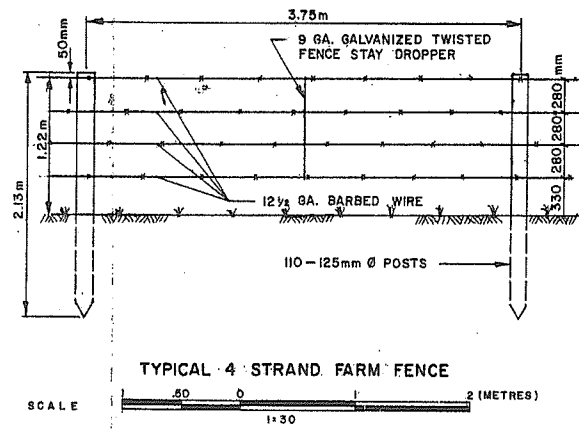
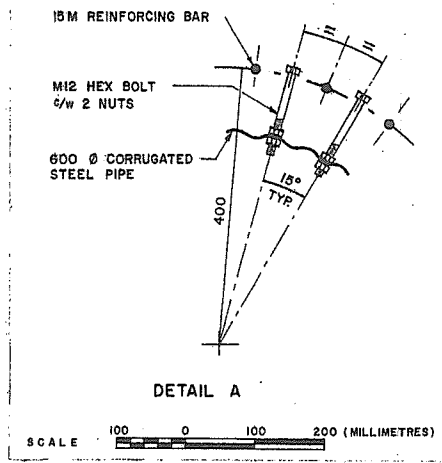
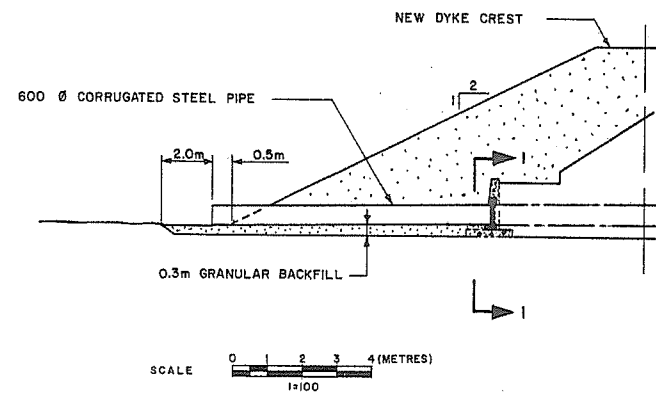
'AS CONSTRUCTED'



CRIPPEN CONSULTANTS
NORTH VANCOUVER, B.C.

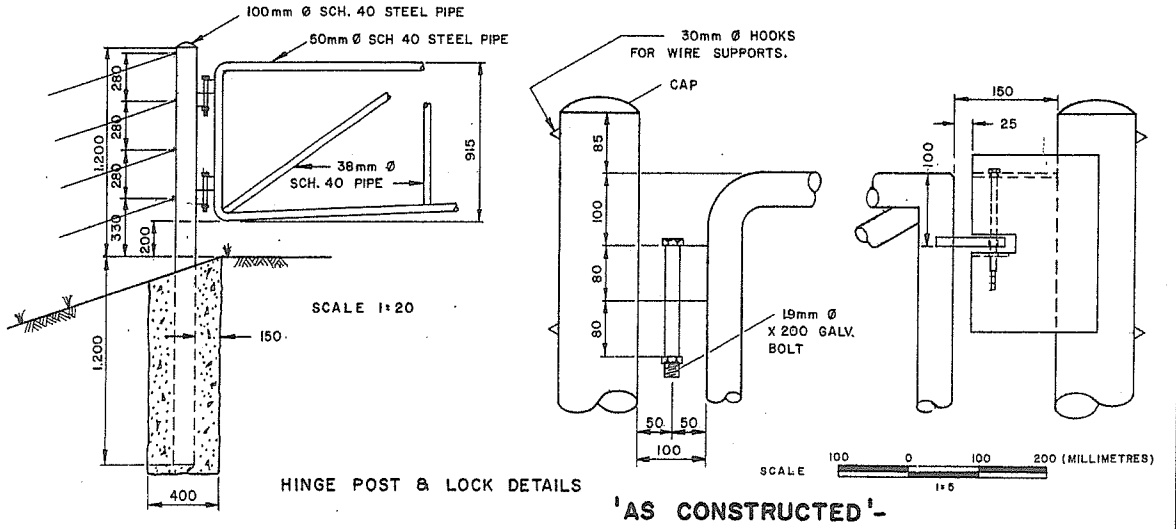
| REFERENCES | | | REVISIONS | | |
|------------|-------------|------|-----------|----------------------------------|---------|
| DWG. No. | DESCRIPTION | DATE | No. | DESCRIPTION | DATE |
| | | | A | AS CONSTRUCTED INFORMATION ADDED | 03/7/88 |

| | | | | |
|--|--|--|--|---|
| SURVEYED CRIPPEN ENG. LTD. DATE _____ DESIGNED T.L. CHECKED T.L. CRIPPEN CONSULTANTS LTD. DATE _____ DRAWN HNC & TB CHECKED GWS CRIPPEN CONSULTANTS LTD. DATE _____ | | Province of British Columbia Ministry of Environment WATER MANAGEMENT BRANCH 1983-1984 FLOOD CONTROL PROGRAM DISTRICT OF ABBOTSFORD CONTRACT No. 1 UPPER SUMAS RIVER DYKES PLAN AND SECTIONS STA. 9+150 TO STA. 9+325 | | FILE NO. P83-4 ENG. PROJECT NO. 10182-D16 NTS MAP NO. 92G-1 SCALE AS SHOWN DRAWING NO. REV. NO. 5460-1-16 A SHEET 13 OF 15 |
| [Signature] 16-05-88 ENGINEER CRIPPEN CONSULTANTS DATE | | [Signature] 16-05-88 RECOMMENDED PROJECT MANAGER/DATE | | [Signature] 16-05-88 APPROVED A/DIRECTOR DATE |



LANDSIDE PIPE EXTENSION
STA. 6+774.85 - McDERMOTT RD.

NOTE
1. GRANULAR BACKFILL BETWEEN CORRUGATED STEEL PIPE AND EXISTING CONCRETE SLAB SHALL BE WELL GRADED, CLEAN SAND AND GRAVEL WITH MAXIMUM SIZE 20mm.



CREST ELEVATIONS SETTING OUT DATA

| STATION | NEW CREST ELEVATION | STATION | NEW CREST ELEVATION | STATION | NEW CREST ELEVATION |
|---------|---------------------|---------|---------------------|---------|---------------------|
| 1+250 | 6.596 | 5+080 | 6.80 | 7+294 | 7.02 |
| 1+348 | 6.60 | 5+280 | 6.82 | 7+500 | 7.04 |
| 1+900 | 6.62 | 5+480 | 6.84 | 7+654 | 7.06 |
| 2+450 | 6.64 | 5+680 | 6.86 | 7+867 | 7.09 |
| 2+986 | 6.66 | 5+900 | 6.88 | 8+071 | 7.12 |
| 3+800 | 6.68 | 6+096 | 6.90 | 8+300 | 7.16 |
| 4+070 | 6.70 | 6+300 | 6.92 | 8+516 | 7.20 |
| 4+279 | 6.72 | 6+500 | 6.94 | 8+678 | 7.23 |
| 4+480 | 6.74 | 6+700 | 6.96 | 8+775 | 7.25 |
| 4+680 | 6.76 | 6+900 | 6.98 | 9+062 | 7.30 |
| 4+880 | 6.78 | 7+102 | 7.00 | 9+275 | 7.346 |



| REFERENCES | | | REVISIONS | | | SURVEYED DATE | | Province of British Columbia Ministry of Environment WATER MANAGEMENT BRANCH | | FILE NO. |
|------------|-------------|------|-----------|-------------|------|---------------|----------|--|--|--------------|
| DWG. No. | DESCRIPTION | DATE | No. | DESCRIPTION | DATE | DATE | DESIGNED | 1983-1984 FLOOD CONTROL PROGRAM DISTRICT OF ABBOTSFORD CONTRACT No.1 | | P83-4 |
| | | | | | | | CB | 7983-1984 FLOOD CONTROL PROGRAM DISTRICT OF ABBOTSFORD CONTRACT No.1 | | 10182-031 |
| | | | | | | | TB | UPPER SUMAS RIVER DYKES FLOODBOX EXTENSION FENCE AND GATE DETAILS | | 926-1 |
| | | | | | | | | SCALE AS SHOWN | | NEGATIVE NO. |
| | | | | | | | | DRAWING NO. 5460-1-31 | | REV. |
| | | | | | | | | SHEET 14 OF 15 | | |

OFF-SET DISTANCES FROM BASE LINE TO CENTER LINE OF NEW DYKE CREST

| STATION | LEFT | RIGHT |
|---------|-------|-------|
| 1+250 | +0.6 | |
| 1+275 | +0.6 | |
| 1+300 | +0.6 | |
| 1+325 | +0.2 | |
| 1+348 | +0.45 | |
| 1+375 | | -0.15 |
| 1+400 | | -0.7 |
| 1+425 | | -0.8 |
| 1+450 | | -0.8 |
| 1+475 | | -1.0 |
| 1+500 | | -1.2 |
| 1+526 | | -1.4 |
| | | |
| 1+725 | | -1.4 |
| 1+748 | | -1.5 |
| 1+775 | | -1.8 |
| 1+800 | | -1.5 |
| 1+825 | | -1.4 |
| | | |
| 2+045 | | -1.4 |
| 2+075 | | -1.8 |
| 2+100 | | -1.2 |
| 2+120 | | -0.8 |
| 2+150 | | -0.8 |
| 2+175 | | -0.8 |
| 2+200 | | -0.9 |
| 2+225 | | -0.9 |
| 2+250 | | -0.8 |
| 2+275 | | -0.8 |
| 2+300 | +0.1 | |
| 2+325 | +1.45 | |
| 2+350 | +1.6 | |
| 2+375 | +1.6 | |
| 2+400 | +1.5 | |
| 2+425 | +1.0 | |
| 2+450 | | 0.0 |
| 2+475 | | -1.0 |
| 2+500 | | -1.2 |
| 2+525 | | -0.8 |
| 2+550 | | -0.3 |
| 2+575 | | -0.4 |
| 2+600 | | 0.0 |
| 2+625 | +0.9 | |
| 2+645 | +1.9 | |
| 2+675 | +1.5 | |
| 2+700 | +1.3 | |
| 2+725 | +1.1 | |
| 2+750 | +1.5 | |
| 2+775 | +1.9 | |
| 2+800 | +1.8 | |
| 2+825 | +1.7 | |
| 2+850 | +1.6 | |


| STATION | LEFT | RIGHT |
|---------|------|-------|
| 2+875 | +1.5 | |
| 2+900 | +1.4 | |
| 2+925 | +1.4 | |
| 2+950 | +1.5 | |
| 2+975 | +1.6 | |
| 3+000 | +1.7 | |
| 3+025 | +1.7 | |
| 3+050 | +1.9 | |
| 3+075 | +1.5 | |
| 3+100 | +1.5 | |
| 3+125 | +1.7 | |
| 3+153 | +1.9 | |
| 3+175 | +1.8 | |
| 3+200 | +1.8 | |
| 3+225 | +2.0 | |
| 3+250 | +2.3 | |
| 3+275 | +2.1 | |
| 3+300 | +1.7 | |
| 3+325 | +1.5 | |
| | | |
| 3+500 | +1.5 | |
| 3+525 | +2.0 | |
| 3+550 | +2.0 | |
| 3+575 | +1.5 | |
| 3+600 | +0.5 | |
| 3+625 | | 0.0 |
| 3+650 | +0.6 | |
| 3+675 | +1.2 | |
| 3+700 | +1.6 | |
| 3+725 | +1.8 | |
| 3+750 | +1.0 | |
| 3+775 | +2.0 | |
| 3+800 | +2.1 | |
| 3+825 | +2.2 | |
| 3+850 | +2.3 | |
| 3+875 | +2.4 | |
| 3+900 | +2.4 | |
| 3+925 | +2.3 | |
| 3+950 | +2.2 | |
| 3+975 | +2.1 | |
| 4+000 | +2.0 | |
| 4+025 | +1.9 | |
| 4+050 | +1.6 | |
| 4+075 | +1.5 | |
| 4+100 | +1.7 | |
| 4+125 | +2.0 | |
| 4+150 | +2.3 | |
| 4+175 | +2.2 | |
| 4+200 | +2.1 | |
| 4+225 | +2.0 | |
| 4+250 | +1.9 | |
| 4+275 | +1.8 | |

| STATION | LEFT | RIGHT |
|---------|-------|-------|
| 4+300 | +1.7 | |
| 4+325 | +1.35 | |
| 4+350 | +0.2 | |
| 4+375 | | -0.9 |
| 4+400 | | -1.4 |
| 4+425 | | -1.5 |
| 4+450 | | -1.4 |
| 4+475 | | -1.3 |
| 4+500 | | -1.2 |
| 4+525 | | -1.2 |
| 4+550 | | -1.1 |
| 4+575 | | -1.1 |
| 4+600 | | -1.0 |
| 4+625 | +0.2 | |
| 4+650 | +1.3 | |
| 4+675 | +1.5 | |
| 4+700 | +1.6 | |
| 4+725 | +1.7 | |
| 4+750 | +1.8 | |
| 4+775 | +1.9 | |
| 4+800 | +2.0 | |
| 4+825 | +2.25 | |
| 4+850 | +2.50 | |
| 4+875 | +2.75 | |
| 4+900 | +3.0 | |
| 4+925 | +3.0 | |
| 4+950 | +3.0 | |
| 4+975 | +2.9 | |
| 5+000 | +2.8 | |
| 5+025 | +2.6 | |
| 5+050 | +2.4 | |
| 5+075 | +2.2 | |
| 5+100 | +2.2 | |
| 5+125 | +2.1 | |
| 5+150 | +2.0 | |
| 5+175 | +2.1 | |
| 5+200 | +2.1 | |
| 5+225 | +2.0 | |
| 5+250 | +2.1 | |
| 5+275 | +2.2 | |
| 5+300 | +2.4 | |
| 5+325 | +2.6 | |
| 5+350 | +2.8 | |
| 5+375 | +3.0 | |
| 5+400 | +3.2 | |
| 5+425 | +3.4 | |
| 5+450 | +3.6 | |
| 5+475 | +3.7 | |
| 5+500 | +3.8 | |
| 5+525 | +3.8 | |
| 5+550 | +3.7 | |
| 5+575 | +3.6 | |

| STATION | LEFT | RIGHT |
|---------|-------|-------|
| 5+600 | +3.4 | |
| 5+625 | +3.2 | |
| 5+647 | +3.0 | |
| 5+675 | +3.0 | |
| 5+700 | +3.0 | |
| 5+725 | +2.95 | |
| 5+750 | +2.90 | |
| 5+775 | +2.85 | |
| 5+800 | +2.80 | |
| 5+825 | +2.8 | |
| 5+850 | +2.9 | |
| 5+875 | +3.0 | |
| 5+900 | +3.1 | |
| 5+925 | +3.1 | |
| 5+947 | +3.0 | |
| 5+975 | +2.8 | |
| 6+000 | +2.6 | |
| 6+025 | +2.4 | |
| 6+050 | +2.2 | |
| 6+075 | +2.0 | |
| 6+095 | +1.9 | |
| 6+125 | +2.0 | |
| 6+150 | +2.1 | |
| 6+175 | +2.2 | |
| 6+200 | +2.3 | |
| 6+225 | +2.4 | |
| 6+250 | +2.5 | |
| 6+275 | +2.6 | |
| 6+300 | +2.7 | |
| 6+325 | +2.8 | |
| 6+350 | +2.9 | |
| 6+375 | +3.0 | |
| 6+400 | +3.0 | |
| 6+425 | +2.9 | |
| 6+450 | +2.8 | |
| 6+475 | +2.7 | |
| 6+500 | +2.6 | |
| 6+525 | +2.5 | |
| 6+533 | +2.5 | |
| 6+575 | +2.8 | |
| 6+600 | +3.0 | |
| 6+625 | +3.2 | |
| 6+650 | +3.4 | |
| 6+672 | +3.6 | |
| 6+700 | +3.6 | |
| 6+725 | +3.7 | |
| 6+750 | +3.8 | |
| 6+787 | +3.8 | |
| 6+806 | +3.0 | |
| 6+825 | +2.3 | |
| 6+850 | +2.4 | |
| 6+872 | +2.8 | |

| STATION | LEFT | RIGHT |
|---------|------|-------|
| 6+900 | +3.2 | |
| 6+925 | +3.6 | |
| 6+950 | +3.4 | |
| 6+975 | +3.2 | |
| 7+003 | +3.0 | |
| 7+025 | +2.9 | |
| 7+050 | +2.8 | |
| 7+075 | +2.7 | |
| 7+102 | +2.6 | |
| 7+125 | +2.1 | |
| 7+150 | +1.6 | |
| 7+171 | +1.1 | |
| 7+200 | +0.6 | |
| 7+225 | +1.2 | |
| 7+250 | +1.8 | |
| 7+275 | +2.4 | |
| 7+294 | +2.8 | |
| 7+321 | +3.2 | |
| 7+350 | +3.3 | |
| 7+375 | +3.2 | |
| 7+400 | +3.1 | |
| 7+425 | +3.0 | |
| 7+450 | +2.9 | |
| 7+475 | +2.8 | |
| 7+500 | +2.7 | |
| 7+526 | +2.6 | |
| 7+550 | +2.7 | |
| 7+575 | +2.8 | |
| 7+600 | +2.9 | |
| 7+625 | +3.0 | |
| | | |
| 7+750 | +3.0 | |
| 7+775 | +2.7 | |
| 7+800 | +2.3 | |
| 7+825 | +1.9 | |
| 7+850 | +1.5 | |
| 7+875 | +1.1 | |
| 7+900 | +0.8 | |
| 7+925 | +1.0 | |
| 7+950 | +1.2 | |
| 7+975 | +1.4 | |
| 8+000 | +1.5 | |
| 8+025 | +1.2 | |
| 8+050 | +0.9 | |
| 8+075 | +0.6 | |
| 8+100 | +0.8 | |
| 8+125 | +1.0 | |
| 8+150 | +1.2 | |
| 8+175 | +1.4 | |
| 8+200 | +1.6 | |
| 8+225 | +1.8 | |

| STATION | LEFT | RIGHT |
|---------|-------|-------|
| 8+275 | +2.3 | |
| 8+300 | +2.8 | |
| 8+325 | +3.0 | |
| 8+350 | +1.3 | |
| 8+375 | +1.35 | |
| 8+400 | +1.30 | |
| 8+425 | +1.45 | |
| 8+450 | +1.5 | |
| 8+475 | +1.8 | |
| 8+500 | +2.3 | |
| 8+525 | +2.5 | |
| 8+550 | +2.3 | |
| 8+575 | +2.0 | |
| 8+600 | +1.6 | |
| 8+625 | +1.1 | |
| 8+650 | +0.6 | |
| 8+675 | +0.4 | |
| 8+700 | +0.5 | |
| 8+725 | +0.8 | |
| 8+750 | +1.1 | |
| 8+775 | +1.25 | |
| 8+800 | +1.35 | |
| 8+825 | +1.40 | |
| 8+850 | +1.4 | |
| 8+875 | +1.4 | |
| 8+900 | +1.15 | |
| 8+925 | +0.45 | |
| 8+950 | | -0.5 |
| 8+975 | | -1.4 |
| 9+000 | | -2.30 |
| 9+025 | | -2.90 |
| 9+050 | | -2.8 |
| 9+075 | | -2.5 |
| 9+100 | | -0.5 |
| 9+125 | +0.1 | |
| 9+150 | +0.8 | |
| 9+175 | +1.2 | |
| 9+200 | +1.25 | |
| 9+225 | +1.3 | |
| | | |
| *A* | 9+250 | +3.3 |
| *A* | 9+275 | +4.7 |
| *A* | 9+300 | +4.7 |
| *A* | 9+325 | +1.75 |
| *A* | 9+350 | 0.0 |

| | | | | | | |
|---|--|--|--|---|---|---|
| REVISIONS No. DESCRIPTION DATE 1. OFF-SET TABLE ADDED 05/88 | | | RECOMMENDED DATE RECOMMENDED DATE APPROVED DATE | Province of British Columbia WATER MANAGEMENT BRANCH  1985-1986 FLOOD CONTROL PROGRAM DISTRICT OF ABBOTSFORD CONTRACT No. 1 | FILE No. DESIGNED DRAWN T.D. BEAULIEU DATE MAY 1988 CHECKED | SURVEYED M OF E DATE 1988 SCALE DRAWING No. SHEET 14A of 15 |
|---|--|--|--|---|---|---|