

Kent

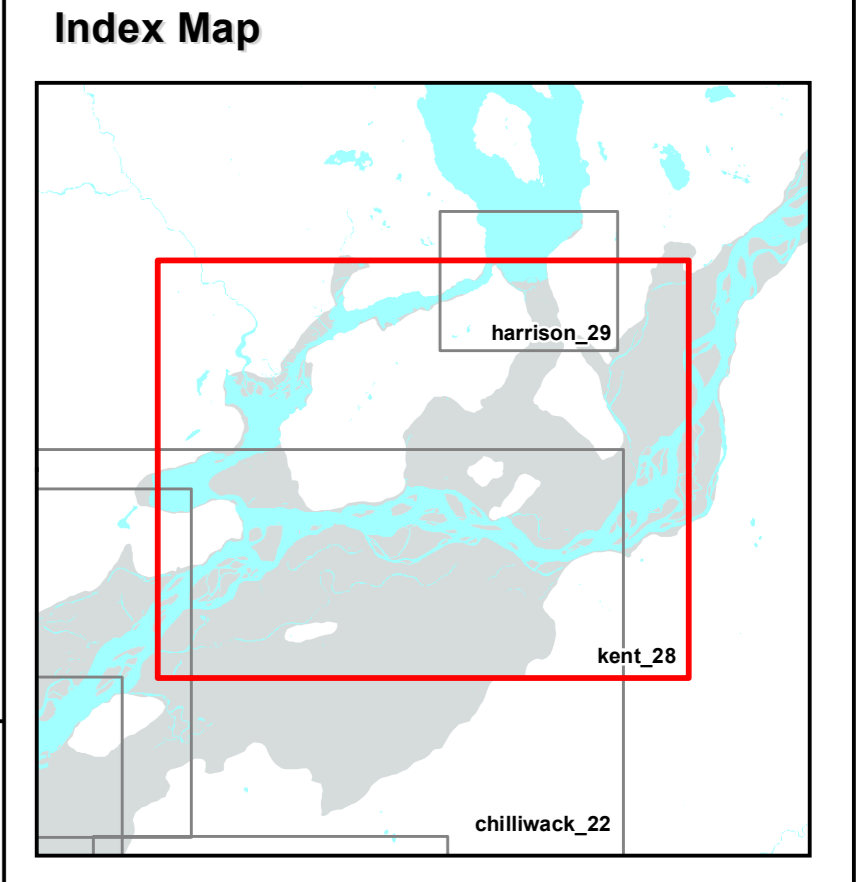
kent_28

Local Diking Authorities

District of Kent
Fraser Valley R.D. (Elbow Creek Dike)
Chehalis Indian Band

- Legend**
- Pumpstation / Floodbox
 - Pumpstation
 - Floodbox
 - Open Culvert
 - Staff Gauge
 - Dike Crest Gauge
 - Water Survey Canada (WSC) Real Time Gauge
 - Relief Well
 - Low Dike
 - Special Concern
 - Metric Stationing 0+000
 - Imperial Stationing 0+000
 - Flood Profile Points Incl. Freeboard †
 - Flood Profile Line
 - RipRap
 - Local Authority's Standard Dike §
 - Local Authority's Non Standard Dike §§
 - Other Flood Control Works
 - Fish and Wildlife Water Related Structure
 - Dikes Outside Local Area (See Note 1)
 - Floodplain
 - Municipal Boundary
 - Indian Reserves
 - Provincial Park
 - Regional District Park
 - Water Pipeline
 - Sewer Pipeline
 - Gas Pipeline
 - Energy Pipeline
 - Oil
 - Electrical transmission line
 - Pipeline
 - Rail Line
- Note 1: Dikes are shown for reference purposes and are outside local diking authority area.

Notes Specific to Local Diking Authorities



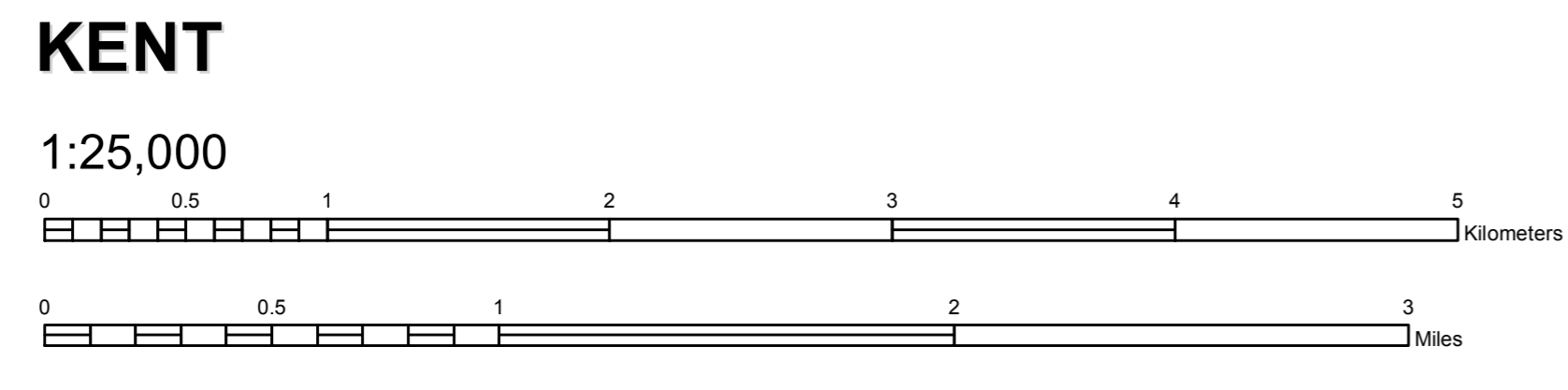
Maps produced for Ministry of Forests, Lands and Natural Resource Operations South Coast Region

Map Projection: Albers, NAD83

Grid Projection: UTM Zone 10N, NAD 83

Revised Date: June 1, 2011

File: kent_28



IMPORTANT NOTICE AND DISCLAIMER

The floodplain boundaries and related flood protection infrastructure shown are provided to support flood emergency preparedness, planning and response; broad-based floodplain management, planning and reviews; and other related activities. It is NOT intended to replace detailed floodplain maps designated under the 1987 Canada/BC Floodplain Mapping Agreement.

FLOODING MAY OCCUR OUTSIDE OF THE FLOODPLAIN AREAS SHOWN.

The data was compiled from various sources; it is not warranted as to its accuracy or sufficiency by the Ministry of Forests, Lands and Natural Resource Operations and is not intended for legal purposes.

§ Standard dike - a flood protection structure that meets, or has met, provincial dike standards that are regulated by the Inspector of Dikes under the Dike Maintenance Act. Due to morphological, hydrological, and other changes in or about river systems, such a dike shown on the map may not continue to meet current standards.

IMPORTANT: To verify a standard dike's current status, the Inspector of Dikes office should be contacted.

§§ Non-standard dike - a flood protection structure that has a lower level of protection than that provided by a standard dike. Flood protection works that conform to this classification often protect rural agricultural lands and are sometimes referred to as agricultural dikes.

† The Fraser River flood profile plus freeboard is derived from the Fraser River Hydraulic Model Update Report, March 2008, by Northwest Hydraulic Consultants.

† Standard dike "have not been evaluated against this new profile and may be lower than the elevation of this new profile plus freeboard. Details of this study may be found on the Ministry of Forests, Lands and Natural Resource Operations, Water Stewardship Division web site.

† Flood Profile Plus Freeboard Disclaimer

The Flood Profile plus Freeboard denotes the standard dike crest elevations established by the Inspector of Dikes for the Fraser River dikes. Floodproofing elevations for buildings and other development in the floodplain are established by and are the responsibility of local government and other development approval officials. These floodproofing elevations may vary from the flood profile plus freeboard elevations shown.

Kent

kent_28