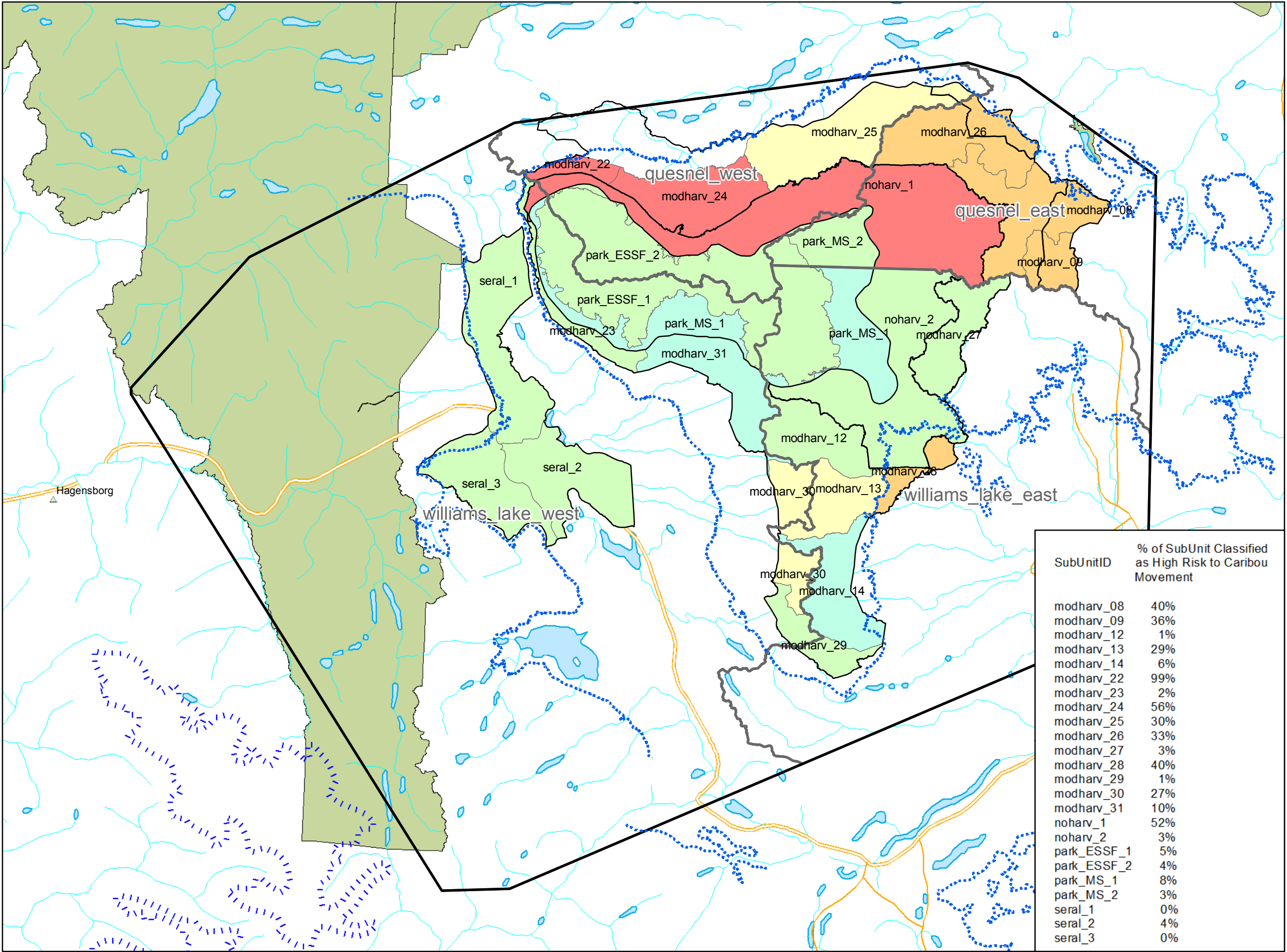


Map 06

Risk to Caribou Movement within the Northern Caribou Wildlife Habitat Area



% of SubUnit Classified as High Risk to Caribou Movement

- 51 - 100%
- 31 - 50%
- 11 - 30%
- 6 - 10%
- 0 - 5%

Itcha Ilgachuz Caribou Habitat Area

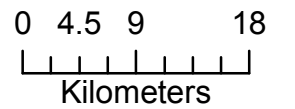
MS-SBPS BEC Zone Division

Caribou Quadrant Boundary

Parks and Protected Areas

SubUnitID	% of SubUnit Classified as High Risk to Caribou Movement
modharv_08	40%
modharv_09	36%
modharv_12	1%
modharv_13	29%
modharv_14	6%
modharv_22	99%
modharv_23	2%
modharv_24	56%
modharv_25	30%
modharv_26	33%
modharv_27	3%
modharv_28	40%
modharv_29	1%
modharv_30	27%
modharv_31	10%
noharv_1	52%
noharv_2	3%
park_ESSF_1	5%
park_ESSF_2	4%
park_MS_1	8%
park_MS_2	3%
seral_1	0%
seral_2	4%
seral_3	0%

Scale 1:600,000



Produced by CB
 Ministry of Forests, Lands, and
 Natural Resource Operations
 Williams Lake, British Columbia

Date: May 4, 2011
 Projection: UTM Zone 10, NAD 83
 Project: wl_08_0207_northern_caribou
 MXD: map06_risk_rating_by_subunit.mxd
 Historic Project #p9805038