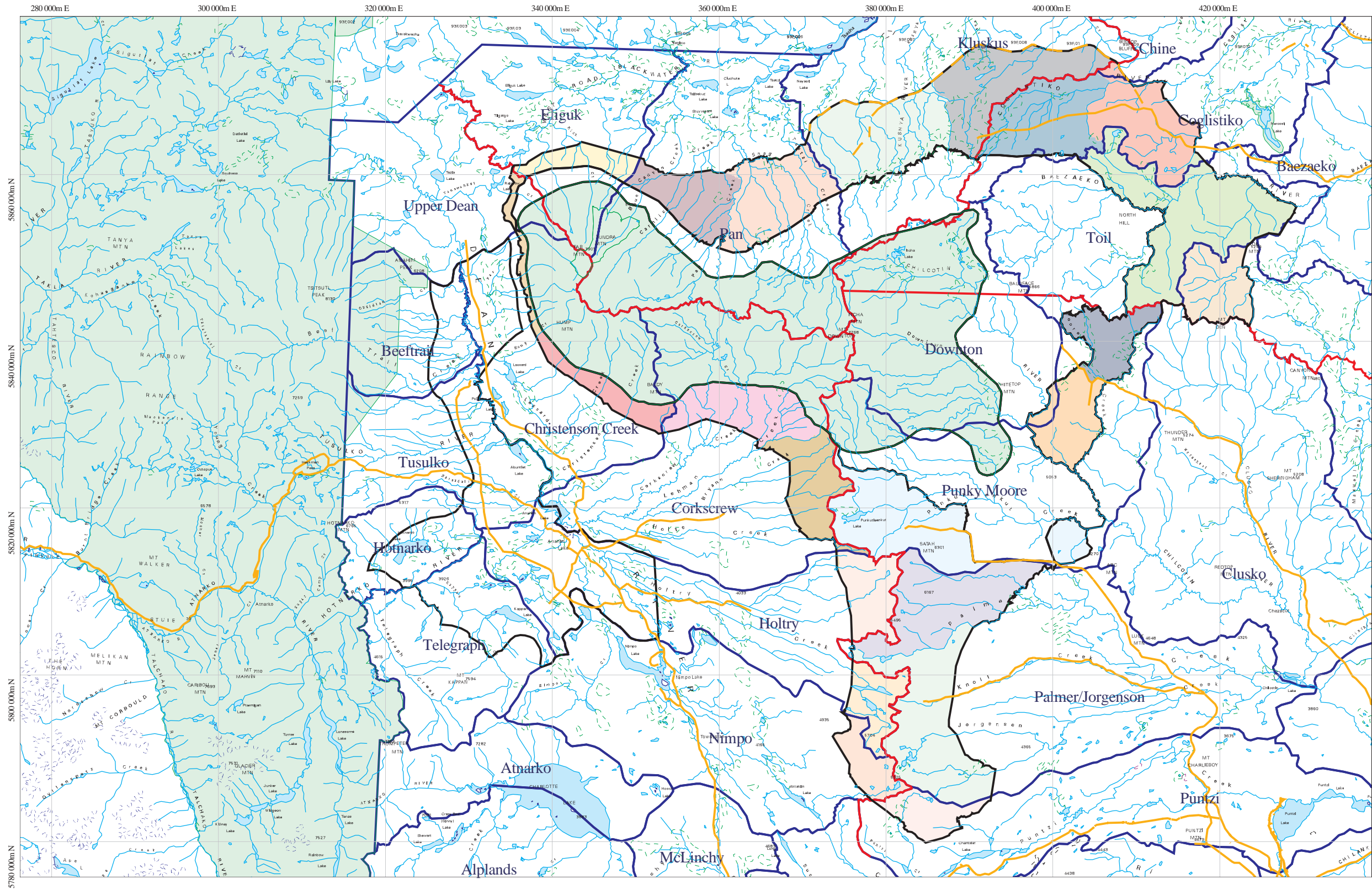


Sub-Units of the Caribou Modified-Harvest Zone to which the 80:20 Terrestrial/Arboreal Objectives Apply



Map 11

- Provincial Parks
- Quadrant Lines
- Landscape Units
- Caribou Habitat Management Zones
- Main Roads
- Proposed Roads

ALLOCATING ARBOREAL VS TERRESTRIAL LICHEN SITES

* 20% of the non-reserved area of each uniquely coloured polygon should be managed with the arboreal lichen prescription; the remainder with the terrestrial lichen prescription

* in addition to this map, follow the guidance in section 5.4 for allocation of arboreal and terrestrial sites

scale = 1:500,000

10 km

Produced by the Resource Information Group
Ministry of Sustainable Resource Management
Williams Lake, British Columbia

Projection is Universal Transverse Mercator, Zone 10
Projection DATUM is NAD83

Project #p9805038 - March 25, 2002