

DEWDROP-TRANQUILLE RIVER  
1981, Parts of 92 19, 10, 15, 16

DEWDROP-TRANQUILLE RIVER  
Sample Plot Location

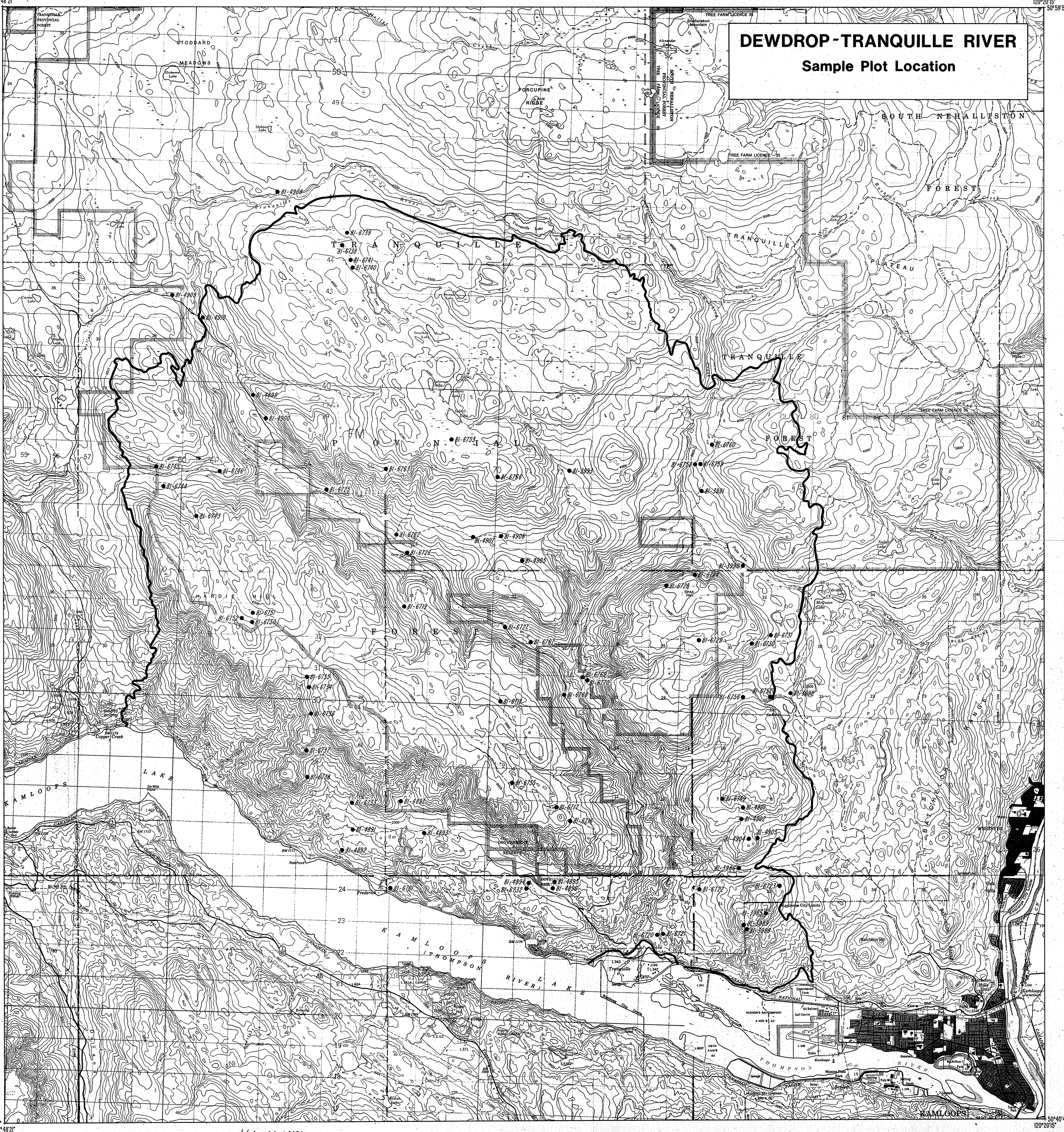
1. On-Site Symbols for Site, Soil and Vegetation Plot Locations

The following on-site symbols indicate the locations of soil, site and vegetation descriptions for the Dewdrop-Tranquille River project. Site and soil descriptions are stored in the B.C. Soils Information System, which contains descriptive and/or analytical information for soil on the accompanying soil map legend. The data for vegetation is also stored in computer files. All data is available on request via the unique data form number indicated.

Symbol	Soil, site, and vegetation description and/or analyses.
● 01-4901	

2. Credits

Sample plots collected by: T. Vold and E. C. Lea  
 Drafted by: Cartography Unit, Surveys and Resource Mapping Branch, British Columbia Ministry of Environment, Kelowna, British Columbia, 1982.  
 Base map supplied by: Surveys and Resource Mapping Branch, British Columbia Ministry of Environment, Victoria, British Columbia.



KAMLOOPS LK.

Scale 1:50,000

Base map covers parts of NTS maps 92 1/9, 10, 15 and 16.

92-1-9, 10, 15, 16