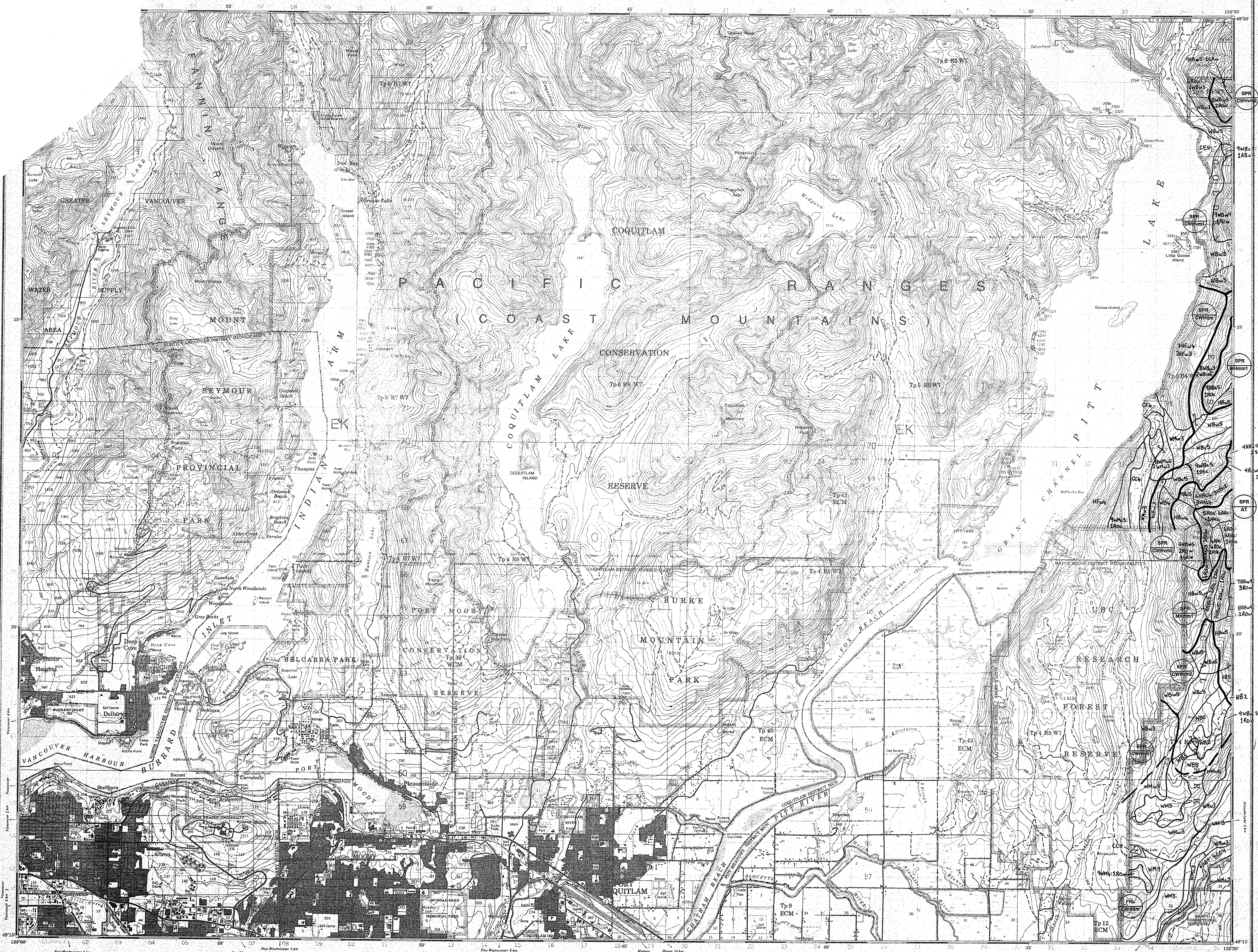


1:50 000

92 G/7



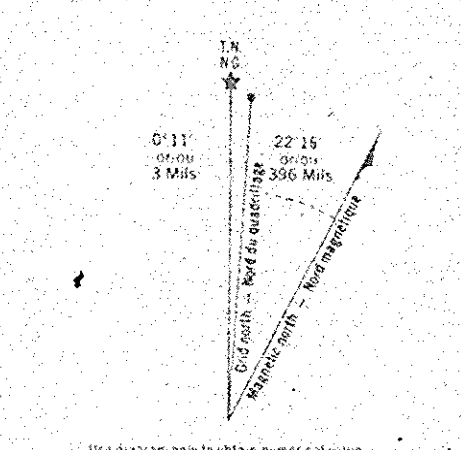
Military works  
Relief in this map  
Relief de cette carte  
pour usage militaire

**GLOSSARY GLOSSAIRE**

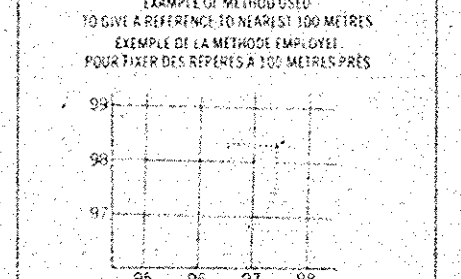
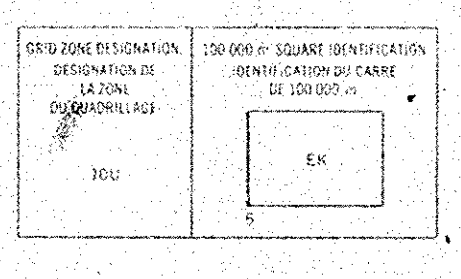
Army	Armée
Base	Bâtiment
Camp	Camp
Canal	Canal
City	Ville
Coast	Côte
Control	Contrôle
Crossing	Passage
Drainage	Drainage
Excavation	Excavation
Farm	Ferme
Field	Champ
Forest	Forêt
Harbour	Port
Highway	Route
Island	Île
Land	Terre
Marsh	Marais
Mountain	Montagne
Peak	Sommets
Pass	Passage
Point	Pont
Post	Bureau de poste
Quarry	Crière
Railway	Voie ferrée
Road	Route
River	Rivière
Slope	Pente
Stream	Cours d'eau
Tunnel	Tunnel
Water	Eau
Well	Puits
Woods	Forêt
Work	Ouvrage

**ABBREVIATIONS ABBREVIATIONS**

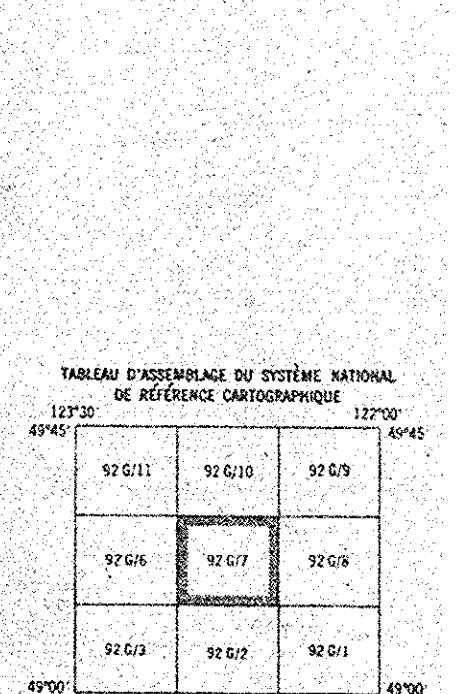
AM	Armed Forces
CA	Canadian Army
CF	Canadian Forces
CG	Canadian Grenadier Guards
CM	Canadian Mounted
CR	Canadian Rangers
CS	Canadian School of Arms and Armour
CSA	Canadian School of Arms and Armour
CSG	Canadian School of Gunnery
CSM	Canadian School of Mountain Warfare
CSN	Canadian School of Nursing
CSO	Canadian School of Ordnance
CSW	Canadian School of Warfare
CSX	Canadian School of Exercises
CSY	Canadian School of Youth Training
CSZ	Canadian School of Zouaves
CSA	Canadian School of Arms and Armour
CSG	Canadian School of Gunnery
CSM	Canadian School of Mountain Warfare
CSN	Canadian School of Nursing
CSO	Canadian School of Ordnance
CSW	Canadian School of Warfare
CSX	Canadian School of Exercises
CSY	Canadian School of Youth Training
CSZ	Canadian School of Zouaves



ONE THOUSAND METRE  
UN MILLE MÈTRES



**NOTICE**  
This map is a reproduction of a map published by the Department of the Interior, British Columbia, in 1968. It is not intended for use as a legal document. The Department of the Interior, British Columbia, is not responsible for any errors or omissions in this map.



92 G/7

**PORT COQUITLAM**  
NEW WESTMINSTER LAND DISTRICT  
BRITISH COLUMBIA

**Scale 1:50 000 Echelle**

0 1000 2000 3000 4000 Meters

**CONVERSION SCALE FOR ELEVATIONS**  
Echelle de Conversion des Altitudes

0 100 200 300 400 500 Feet

**NOTICE**  
This map is a reproduction of a map published by the Department of the Interior, British Columbia, in 1968. It is not intended for use as a legal document. The Department of the Interior, British Columbia, is not responsible for any errors or omissions in this map.

Golden Ears Park