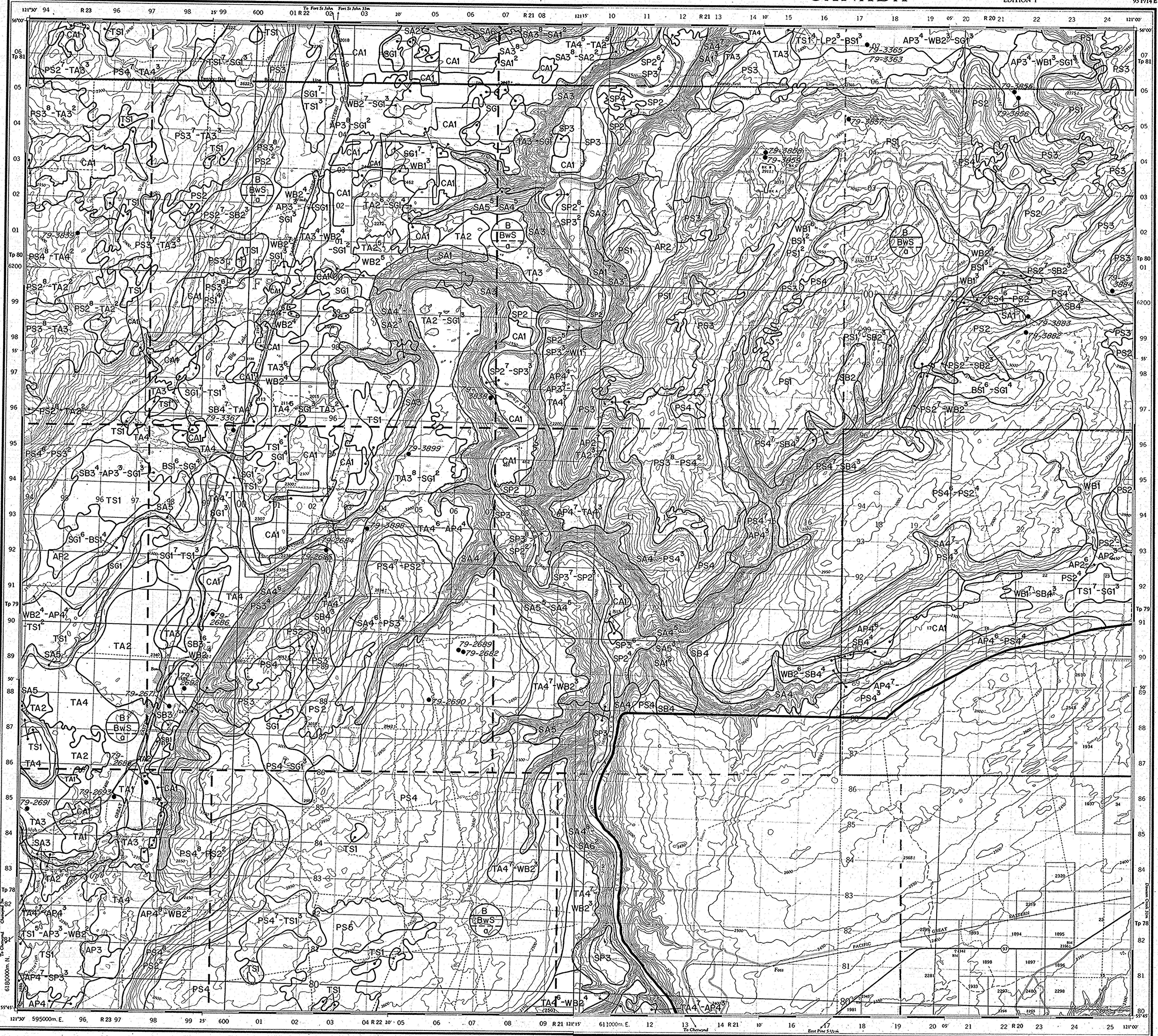


CANADA

CANADA

EDITION 1

93 P/14 E



VEGETATION LANDSCAPES FOR THE PINE-MOBERLY MAP AREA

LEGEND

**1. Explanatory Notes**

A vegetation map shows Forest Regions, Zones, Subzones and Vegetation Landscape Units. Zones, Subzones and Landscape Units are the basic building blocks of this biophysical classification. A landscape unit is an area that is relatively homogeneous with respect to soils, surficial materials, disturbance history, climate and micro vegetation. Vegetation maps form a necessary input towards determining management alternatives, constraints, use and productivity (See Box 8).

Vegetation is mapped at a scale of 1:50 000 for the National Topographic Series mapsheet numbers 93P/13, 14 and 15, and 93A/2, 3 and 4.

The map must be used in conjunction with the Explanatory legend booklet (See Box 8).

More-detailed legends or reports may be available for this study area (See Box 8).

**2. Map Boundaries and Plot Symbols**

- Project boundary
- Vegetation Landscape boundary
- 79-3879 Vegetation plot with a general soil description

**3. Examples of Map Symbols**

(a) Biophysical Forest Regions, Zones and Subzones (See Box 5)

(b) Vegetation Landscape Unit

**4. Composite Units**

Composite units are employed where two or three types of landscape units are so distributed that they cannot be designated as separate units at the scale of mapping. Superscript numbers show the relative percentages in mass of each landscape unit.

Example:  $AP^4 - TA^3 - WB^2$   
50% of unit 30% of unit 20% of unit

**5. Biophysical Forest Regions, Zones and Subzones**

Forest Region	Map Symbol	Forest Zone <sup>2</sup> and Subzone <sup>3</sup>
BORAL REGION (BR)	B BWS O	BORAL WHITE SPRUCE ZONE (BWS) Black spruce subzone (a)

**6. List of Vegetation Landscapes (v.l.)**

- AP Trembling aspen - balsam poplar v.l.
- BS Black spruce v.l.
- CA Cultivated area
- CS Common salix - trembling aspen v.l.
- PS Lodgepole pine - white spruce v.l.
- TA Trembling aspen - birch v.l.
- SB White spruce - birch v.l.
- WB White spruce - balsam poplar v.l.
- TS Trembling aspen v.l.
- TSB Trembling aspen - balsam poplar v.l.
- W Willow - bog birch v.l.

**7. Sources of Information**

a. B.C. Ministry of Forests - Forest cover maps and associated information for Public Substantiated Yield Units:  
i. Owen Creek - 1976  
ii. Moberly - 1976  
iii. Peace - 1972  
iv. Individual sample volume statements - 129 plots

b. Land Resource Research Institute, B.C. Pedology Unit  
i. Soil and Terrain Maps - 1972

c. B.C. Ministry of Environment, Terrestrial Studies Branch  
i. Vegetation survey (1979) - 93 plots

d. B.C. Ministry of Environment, Surveys and Mapping Branch  
i. 60 chain aerial photographs - 1965-1965  
ii. 80 chain aerial photographs - 1971

**8. For Further Information**

A. References:  
(a) Vegetation Mapping Methodology Manual, Terrestrial Studies Branch, Victoria, B.C. (in preparation).  
(b) Exploratory report for Vegetation Maps of the Pine-Moberly Area, Terrestrial Studies Branch, Victoria, B.C., 1980.  
(c) Vegetation of the Pine-Moberly Area, Terrestrial Studies Branch, Victoria, B.C., 1980.

B. Additional vegetation data and more detailed information is available from:  
Operations Manager  
Terrestrial Studies Branch  
Ministry of Environment  
Parliament Buildings  
Victoria, B.C. V8V 1X6

C. Additional vegetation maps available from:  
Map Library  
Terrestrial Studies Branch  
Ministry of Environment  
Parliament Buildings  
Victoria, B.C. V8V 1X6

**9. Credits**

Mapping supervised by Carol Thomson  
Mapping correlated by A.E. Macdonald  
Date of field mapping 1979  
Designed by cartographer, Terrestrial Studies Branch, Ministry of Environment, Victoria, B.C.

Date drafted June 1980  
Revision dates  
Base map provided by Surveys and Mapping Branch, Ministry of Environment, Victoria, B.C.

