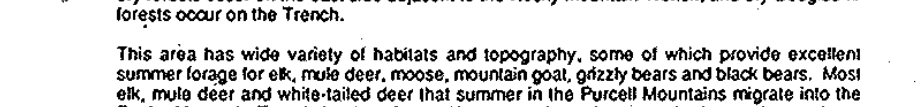


BIOLOGICAL HABITATS OF THE
PURCELL MOUNTAINS (CENTRAL PORTION)

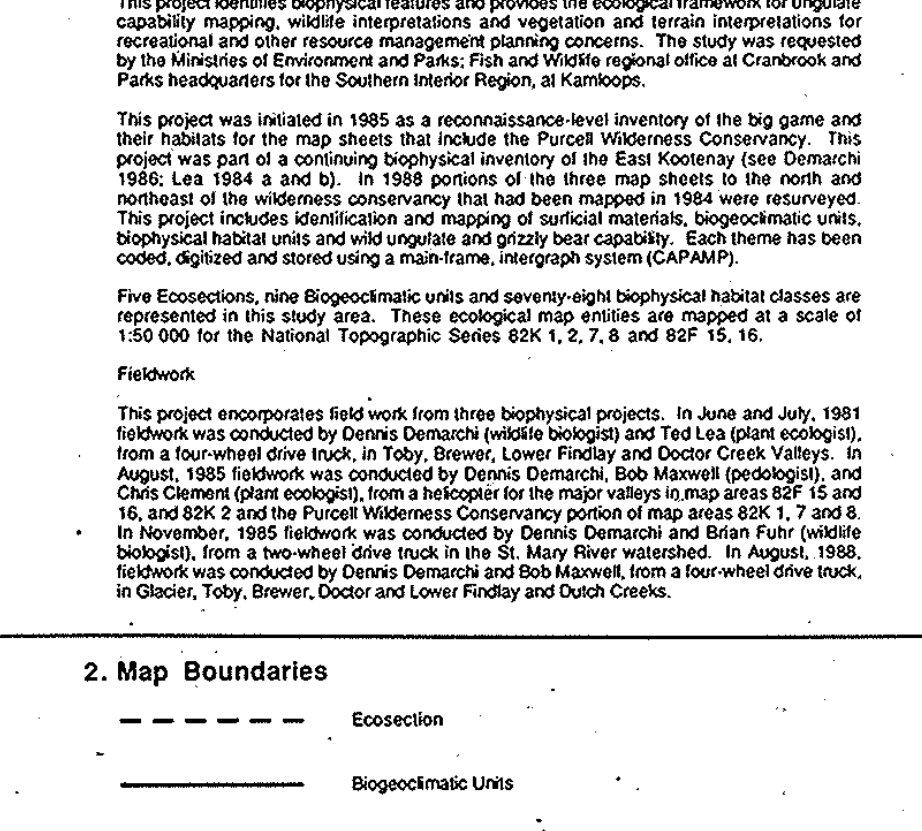
1. Explanatory Notes

The Central Purcell Mountains project is located in the northeastern portion of British Columbia, along the western base of the Coast Range. The study area covers an area of approximately 100 km² and is bounded by the Purcell Mountains to the north and west and the Skeena River to the south. The study area is divided into 10 biophysical habitat units (BHU) based on elevation, aspect, and vegetation. The units are: EPW (East Purcell Mountains), ESM (East Skeena Mountains), ESM2 (East Skeena Mountains 2), ESM3 (East Skeena Mountains 3), ESM4 (East Skeena Mountains 4), ESM5 (East Skeena Mountains 5), ESM6 (East Skeena Mountains 6), ESM7 (East Skeena Mountains 7), ESM8 (East Skeena Mountains 8), and ESM9 (East Skeena Mountains 9).

2. Map Boundaries

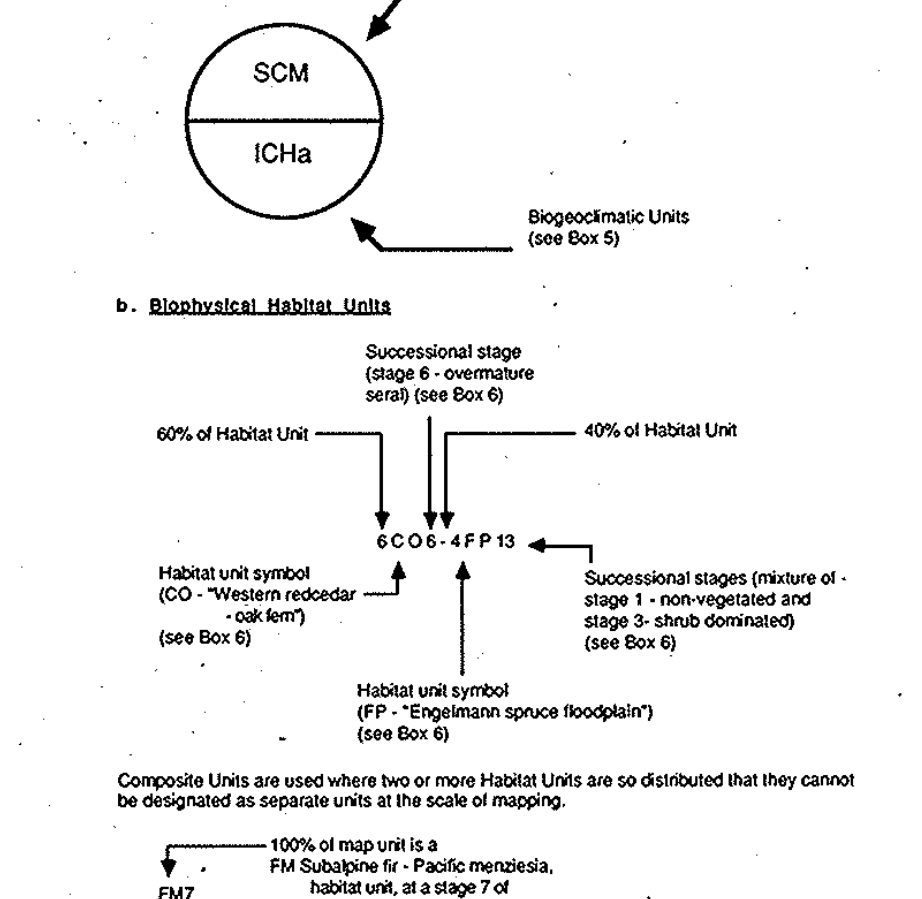


3. Examples of Map Symbols



4. Ecosection

Ecosections are large, subregional land areas, delineated by a particular management process or management objective. They are characterized by a particular biophysical habitat unit and a particular successional stage. The ecosections are: EPW, ESM, ESM2, ESM3, ESM4, ESM5, ESM6, ESM7, ESM8, and ESM9.



5. Biogeographic Units

Table with 4 columns: Symbol, Ecosection, Biogeographic Unit, Successional Stage. Rows include EPW, ESM, ESM2, ESM3, ESM4, ESM5, ESM6, ESM7, ESM8, and ESM9.

6. Biogeographic Units

Biogeographic units are defined by a particular biophysical habitat unit and a particular successional stage. The units are: EPW, ESM, ESM2, ESM3, ESM4, ESM5, ESM6, ESM7, ESM8, and ESM9.

7. Sources of Information

- 1. British Columbia Ministry of Forests - Research Section
2. British Columbia Ministry of Forests - Research Section
3. British Columbia Ministry of Forests - Research Section

8. Credits

Prepared by: D. J. S. Smith and M. J. Smith
Checked by: D. J. S. Smith and M. J. Smith
Approved by: D. J. S. Smith and M. J. Smith

TOBY CREEK KOOTENAY LAND DISTRICT BRITISH COLUMBIA. Includes a scale bar (1:50,000), conversion tables for elevations, and a north arrow. The title '82K/BIO' is printed vertically on the left side.

6. Biophysical Habitat Units and Successional Stages

Table with 3 columns: Unit Code, Unit Name, Successional Stage. Lists various habitat units and their corresponding successional stages.

Table with 3 columns: Unit Code, Unit Name, Successional Stage. Lists various habitat units and their corresponding successional stages.

Table with 3 columns: Unit Code, Unit Name, Successional Stage. Lists various habitat units and their corresponding successional stages.

Table with 3 columns: Unit Code, Unit Name, Successional Stage. Lists various habitat units and their corresponding successional stages.

Table with 3 columns: Unit Code, Unit Name, Successional Stage. Lists various habitat units and their corresponding successional stages.

Table with 3 columns: Unit Code, Unit Name, Successional Stage. Lists various habitat units and their corresponding successional stages.

Table with 3 columns: Unit Code, Unit Name, Successional Stage. Lists various habitat units and their corresponding successional stages.

Table with 3 columns: Unit Code, Unit Name, Successional Stage. Lists various habitat units and their corresponding successional stages.

Table with 3 columns: Unit Code, Unit Name, Successional Stage. Lists various habitat units and their corresponding successional stages.

Table with 3 columns: Unit Code, Unit Name, Successional Stage. Lists various habitat units and their corresponding successional stages.

Table with 3 columns: Unit Code, Unit Name, Successional Stage. Lists various habitat units and their corresponding successional stages.

Table with 3 columns: Unit Code, Unit Name, Successional Stage. Lists various habitat units and their corresponding successional stages.

82K/BIO