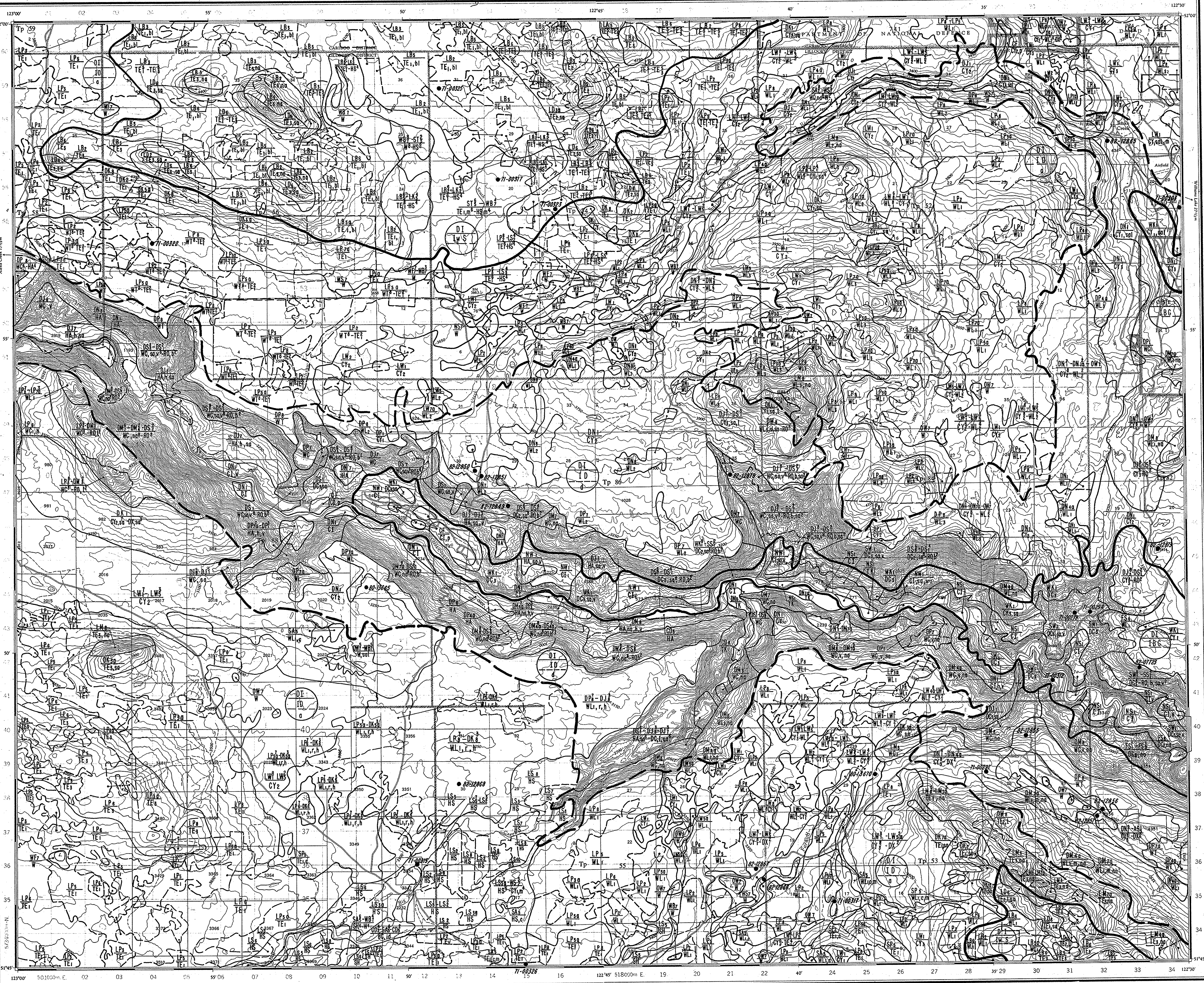


HABITAT MAP UNITS  
(VEGETATION LANDSCAPES AND SOILS ASSOCIATIONS)  
OF THE RISKE CREEK STUDY AREA

Province of British Columbia  
Ministry of Environment, Lands and Parks,  
Wildlife Branch, Habitat Inventory Section  
Victoria, British Columbia  
E.C. Lea and M.A. Fenger 1992



EXPLANATORY NOTES  
The map displays the results of field and laboratory work and is based on the data collected during the study. It is not intended to be used as a guide for land use planning or other purposes. The map is a representation of the data and does not guarantee the accuracy of the information. The map is a representation of the data and does not guarantee the accuracy of the information.

EXAMPLES OF MAP SYMBOLS  
Vegetation Landscapes and Soils Associations  
Vegetation Landscapes and Soils Associations  
Vegetation Landscapes and Soils Associations

COMPOSITE UNITS  
Composite units are shown on the map as a shaded area. The composite unit is a combination of two or more map units. The composite unit is a combination of two or more map units.

VEGETATION REGION  
Vegetation Region  
Vegetation Region

VEGETATION ZONES AND SUBZONES  
Vegetation Zones and Subzones  
Vegetation Zones and Subzones

VEGETATION LANDSCAPES AND SOILS ASSOCIATIONS  
Vegetation Landscapes and Soils Associations  
Vegetation Landscapes and Soils Associations

REFERENCES  
References  
References

ACKNOWLEDGEMENTS  
Acknowledgements  
Acknowledgements

ABBREVIATIONS  
Abbreviations  
Abbreviations

SOIL ASSOCIATIONS AND COMPONENTS  
Soil Associations and Components  
Soil Associations and Components

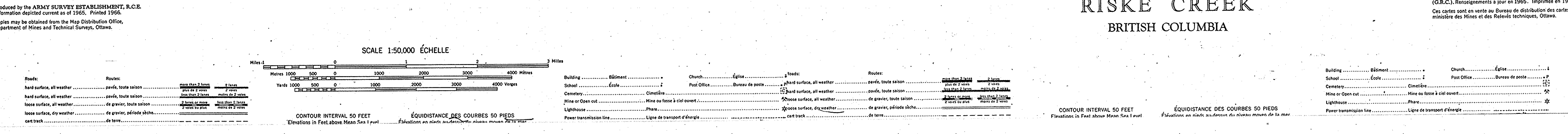
SOIL MAP UNIT SCHEMES  
Soil Map Unit Schemes  
Soil Map Unit Schemes

COARSE FRAGMENTS  
Coarse Fragments  
Coarse Fragments

TALENTS  
Talemts  
Talemts

13 SOURCES OF INFORMATION  
Sources of Information  
Sources of Information

14. CONTACTS  
Contacts  
Contacts



RISKE CREEK  
BRITISH COLUMBIA

Publié par le SERVICE TOPOGRAPHIQUE DE L'ARMÉE  
G.S.C. (Geographical Service) à partir de 1950. Modifié en 1992.  
Ce carte peut être utilisée au Service de distribution des cartes  
en vertu de la Loi sur l'accès à l'information.

92/0/15  
RISKE  
CREEK

Riske Creek 92/0/15