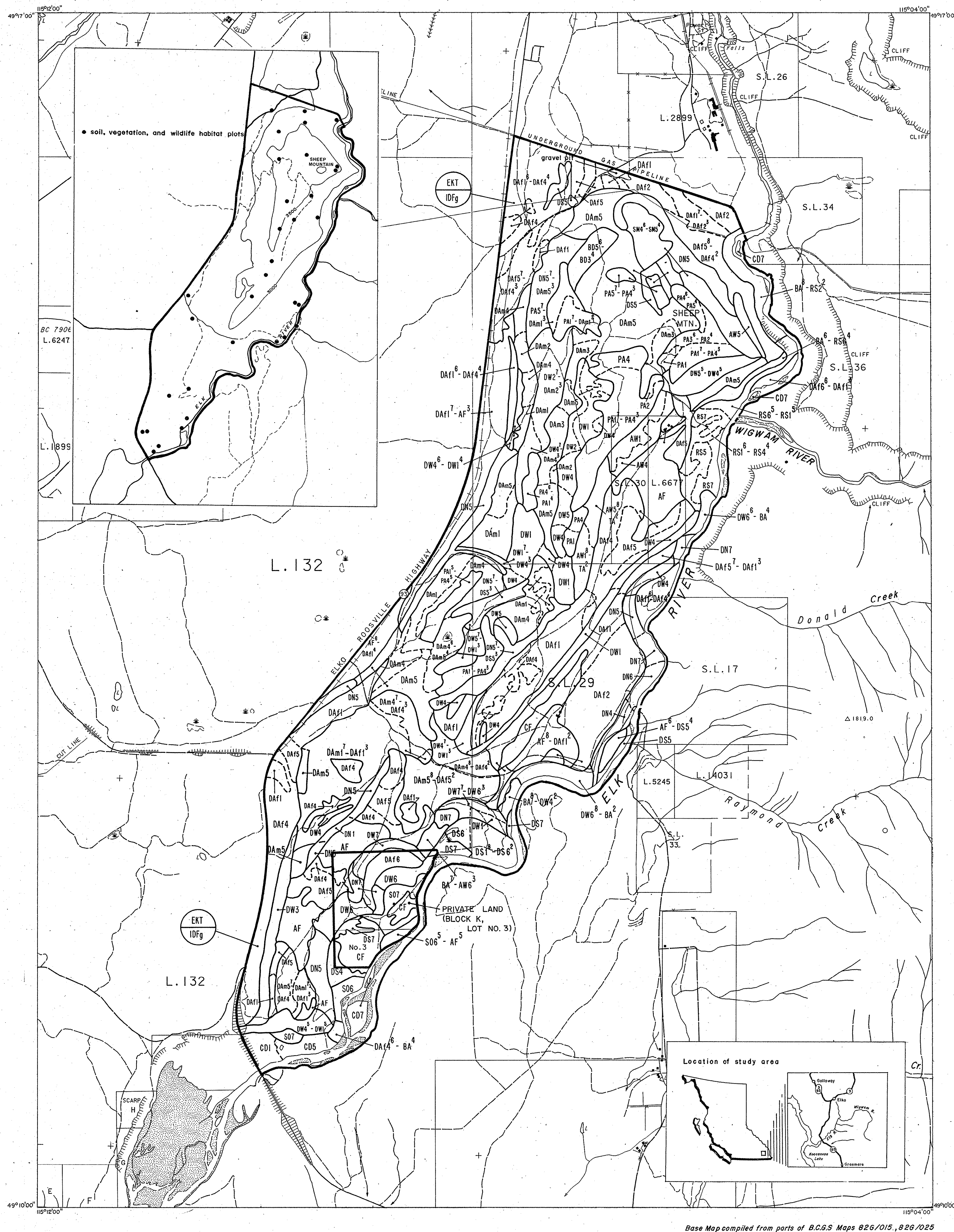


SHEEP MOUNTAIN WILDLIFE AREA



82G/015
82G/025

HABITAT UNITS FOR THE SHEEP MOUNTAIN WILDLIFE AREA

1. Explanatory Notes

The Sheep Mountain Wildlife Area is located in the northern portion of the South Carolina Piedmont Plateau. The area is bounded on the north by the Wigan River, on the east by the Donald Creek, on the south by the Wigan River, and on the west by the Wigan River. The area is bounded on the north by the Wigan River, on the east by the Donald Creek, on the south by the Wigan River, and on the west by the Wigan River.

2. Map Boundaries

Biophysical Habitat Units
Successional Stages

3. Examples of Map Symbols

4. Composite Units

5. Ecogeographic Classification

6. Biogeographic Zones and Subzones

7. Biophysical Habitat Units

Unit	Physical Description	Successional Stage	Vegetation	Soil	Comments
DM1
DM2
DM3
DM4
DM5
DM6
DM7
DM8
DM9
DM10
DM11
DM12
DM13
DM14
DM15
DM16
DM17
DM18
DM19
DM20
DM21
DM22
DM23
DM24
DM25
DM26
DM27
DM28
DM29
DM30
DM31
DM32
DM33
DM34
DM35
DM36
DM37
DM38
DM39
DM40
DM41
DM42
DM43
DM44
DM45
DM46
DM47
DM48
DM49
DM50
DM51
DM52
DM53
DM54
DM55
DM56
DM57
DM58
DM59
DM60
DM61
DM62
DM63
DM64
DM65
DM66
DM67
DM68
DM69
DM70
DM71
DM72
DM73
DM74
DM75
DM76
DM77
DM78
DM79
DM80
DM81
DM82
DM83
DM84
DM85
DM86
DM87
DM88
DM89
DM90
DM91
DM92
DM93
DM94
DM95
DM96
DM97
DM98
DM99
DM100

8. Successional Stages

9. Sources of Information

10. Correlation to Ministry of Forests Ecosystem Units

11. Bibliography

12. Credits