

Babine Forest Products Ltd

Tidesley L.R.F.M.P.

Wildlife Habitat Unit and Special Management Zone Map

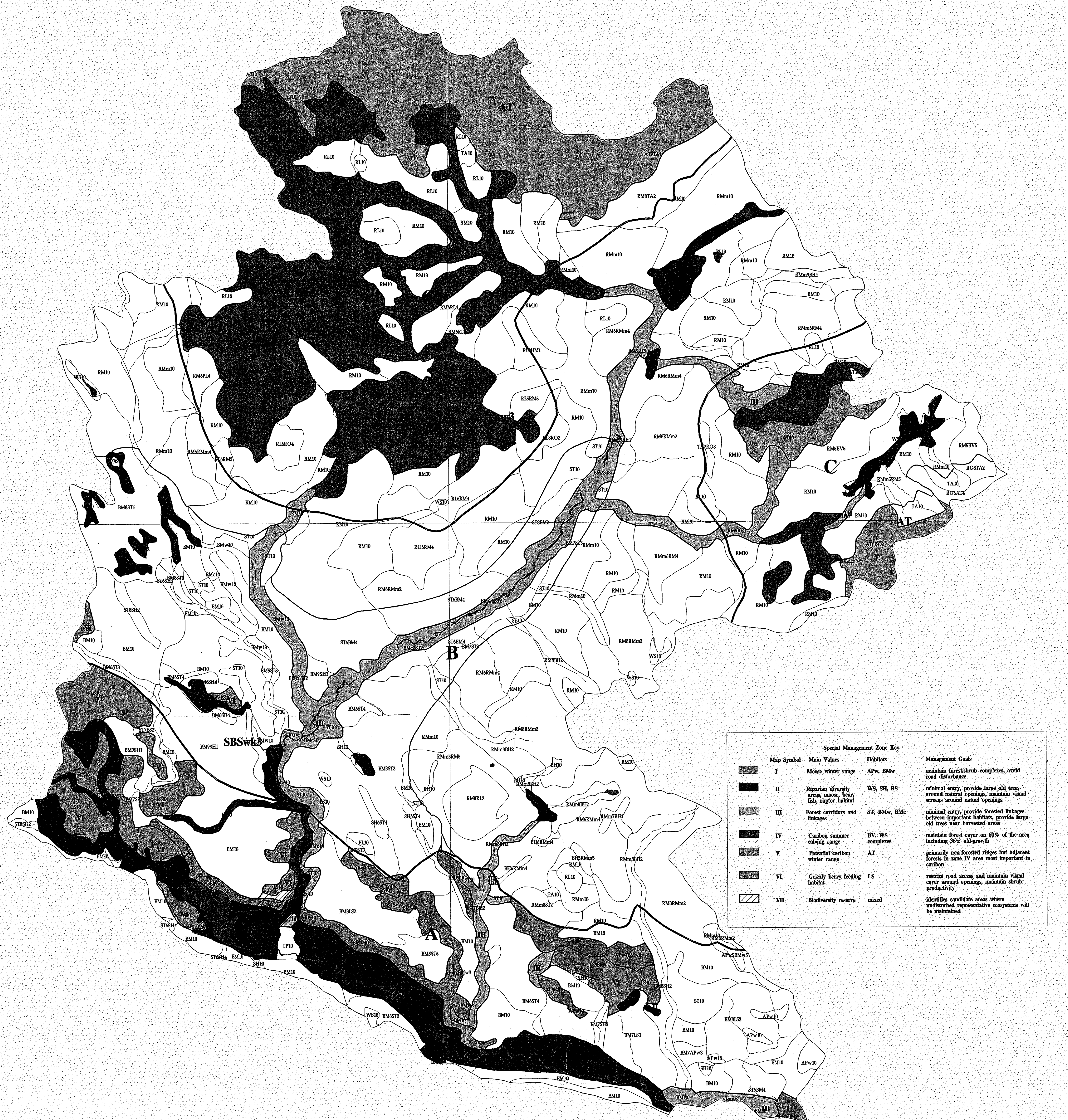
255w13	Aspen - peewee, worm	APW
	Bunchberry - moss	BM
	Bunchberry - moss, cool	BMc
	Bunchberry - moss, warm	BMw
	Black spruce - dwarf birch - sphagnum bog	BS
	Lodgepole pine - ssp. latifolia	LS
	Lodgepole pine - lichen	PL
	Flooding pine	FP
	Rock outcrop	RO
	Spruce - horsehair	SH
	Spruce - twigsberry	ST
	Talus	TA
	Willow - sedge wetland	WS
255w13	Subalpine fir - horsetail	BH
	Subalpine fir - Sitka valerian	BV
	Lodgepole pine - lichen	PL
	Herb Meadow	HM
	Rhododendron - lichen	RL
	Rhododendron - moss	RM
	Rhododendron - moss, moist receiving	RMm
	Rock outcrop	RO
	Talus	TA
	Willow - sedge wetland	WS

AT	Alpine tundra	AT
	Subalpine wet parkland	WP
	Talus	TA
	Rock outcrop	RO

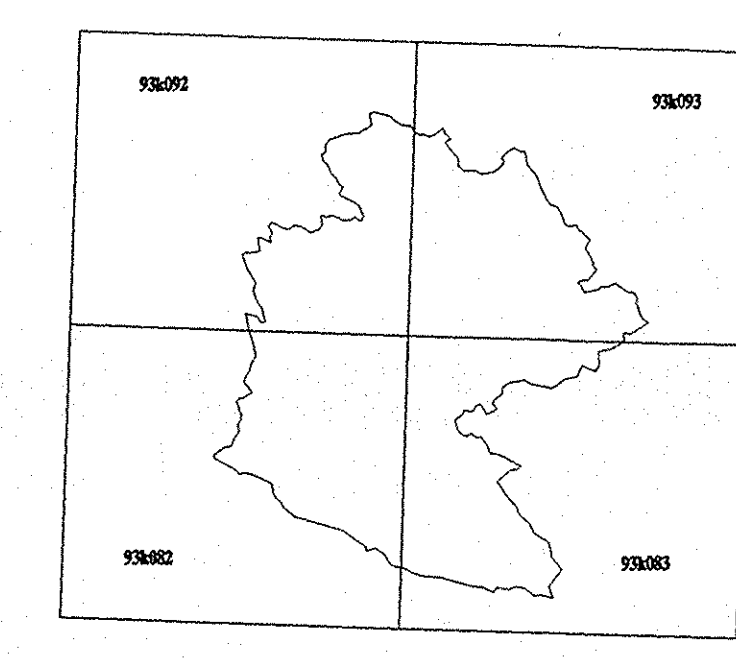
Lakes and Rivers	
Major Creeks	
Habitat Boundaries	
Roads	
Biogeoclimatic Variant Boundaries	
Special Management Zone Boundaries	
Planning Zone Boundaries	

Biogeoclimatic Variant **SBSw13**

Planning Zone **A**



Map Symbol	Main Values	Habitats	Management Goals	
	I	Moose winter range	APW, BMw	maintain forest/shrub complexes, avoid road disturbance
	II	Riparian diversity areas, moose, bear, fish, raptor habitat	WS, SH, BS	minimal entry, provide large old trees around natural openings, maintain visual screens around natural openings
	III	Forest corridors and linkage	ST, BMw, BMc	minimal entry, provide forested linkage between important habitats, provide large old trees near harvested areas
	IV	Carbon summer caching range	BV, WS complexes	maintain forest cover on 60% of the area including 30% old-growth
	V	Potential carbon winter range	AT	primarily non-forested ridges but adjacent forests in zone IV area most important to carbon
	VI	Grizzly berry feeding habitat	LS	restrict road access and maintain visual cover around openings, maintain shrub productivity
	VII	Biodiversity reserve	mixed	identify candidate areas where undisturbed representative ecosystems will be maintained



Scale 1:25000 - 1 cm = 250 metres
Plot file generated on July 14, 1995 at 21:08:24