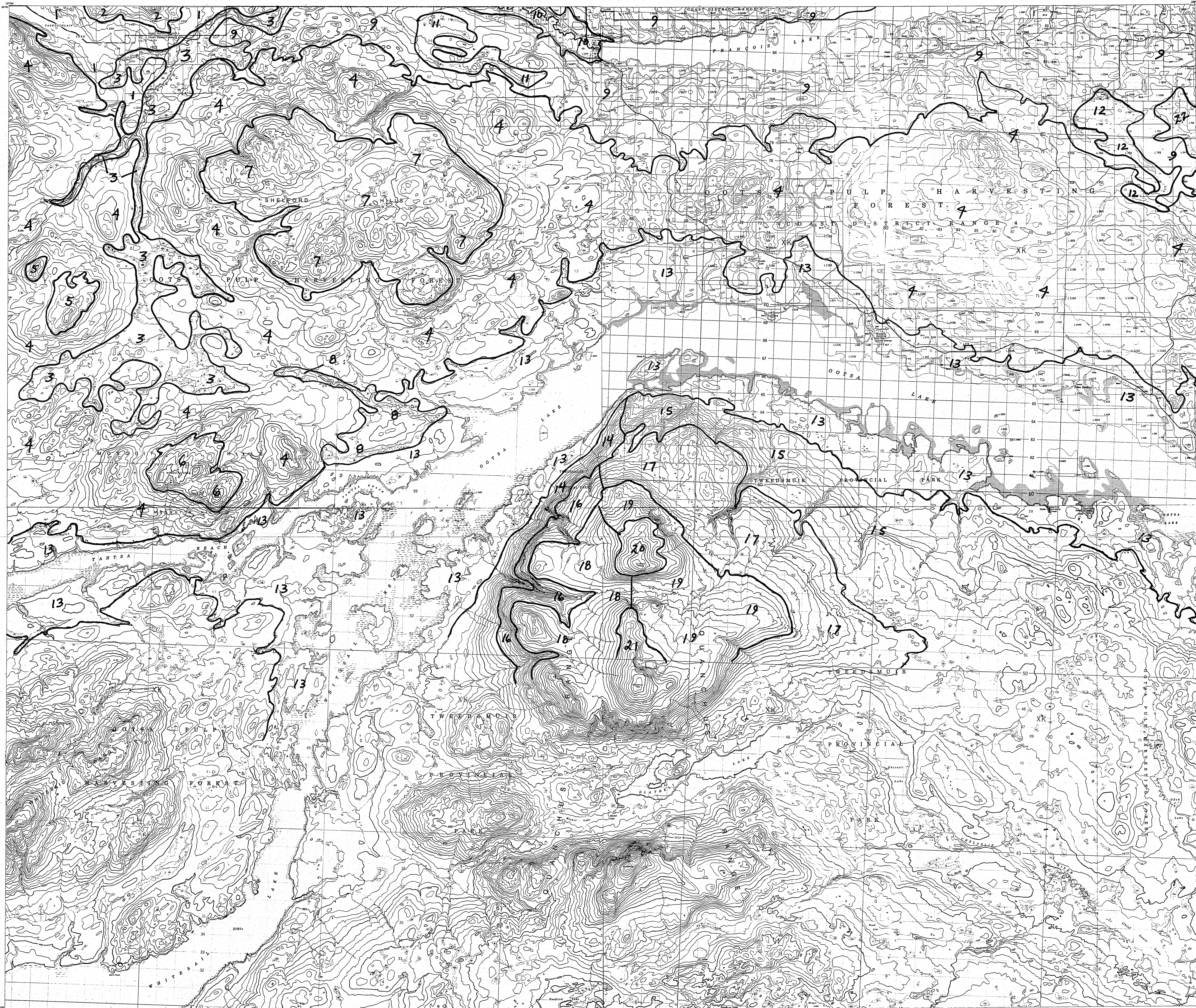


B. C. LAND INVENTORY (C.L.I.)

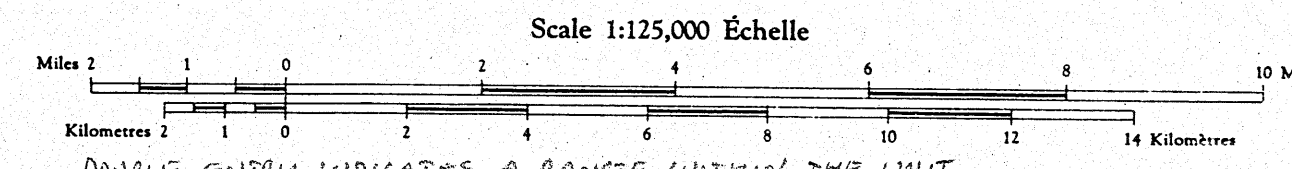


93E/NE

UNIT	ANN. PPT. (IN)	MY-SPT PPT. (IN)	NOV-MAR SNOWFL. (IN)	MAX. SNOWPK (IN)	F.S.B. (DAYS)	F.W.S. (DAYS)	NOV/100	TDD/100	FDD/100	GDD	FFP	P.ET	E ₀	CCA	APP UNIT
1	20	7.0	60	20	2-	2	9.3	39.4	34.2	1400	40	17.0	22.1	SFG	S 1
2	25	7.0	90	40	2-	5	9.6	38.6	35.4	1000	40	16.0	23.4	SFG	L 2
3	20	7.0	90	20	2-	2	9.8	38.2	35.9	1000	30-	17.0	22.1	GF	S 3
4	20	7.0	90	40	2	5	9.6	38.6	35.4	1400	40	16.0	23.4	SFG	L 4
5	25	9.0	120	40	2	5	12.0	33.8	44.0	1000	30-	16.0	20.8	EH	L 5
6	25	9.0	120	40	2	5	12.0	33.8	44.0	1000	30-	16.0	20.8	EH	L 6
7	25	9.0	120	40	5	10+	12.0	33.8	44.0	1200	30-	16.0	20.8	EH	L 7
8	20	7.0	60	20	2-	2-	9.8	38.2	35.9	1000	30-	16.0	23.4	SFG	S 8
9	18	6.0	60	20	2-	2-	9.6	38.6	35.4	1750	55	19.0	24.7	SFG	SM 9
10	18	6.0	60	20	2-	2-	9.5	39.0	34.8	1750	40	18.0	23.4	SFG	S 10
11	18	7.0	60	20	2-	2-	9.4	39.0	34.7	1300	30-	17.0	22.1	GF	S 11
12	18	7.0	60	20	2-	2-	9.4	39.0	34.7	1300	30-	17.0	22.1	GF	L 12
13	18	7.0	60	20	2-	2-	9.3	39.4	34.2	1400	40	16.0	23.4	SFG	S 13
14	20	7.0	90	40	2	2	9.6	38.6	35.4	1400	40	16.0	23.4	SFG	LS 14
15	20	8.0	90	40	2	2	9.8	38.2	35.9	1400	40	16.0	19.5	SFG	L 15
16	25	9.0	120	40	5	5	12.0	33.8	44.0	1000	30-	16.0	20.8	EH	L 16
17	25	9.0	120	40	5	5	12.2	33.4	44.4	1000	30-	16.0	20.8	EH	L 17
18	30	12.0	150+	60	5	10+	14.0+	28.2-	52.0+	1000	30-	15.0	19.5-	EH	L 18
19	30	12.0	150+	60	5	10+	15.0+	27.8-	52.4+	1000	30-	15.0	19.5-	EH	L 19
20	40+	15.0+	150+	80+	5	10+	17.0+	25.0-	50.0+	1000	30-	15.0	19.5-	EH	L 20
21	40+	15.0+	150+	80+	5	10+	17.0+	25.0-	50.0+	1000	30-	15.0	19.5-	EH	L 21
22	18	7.0	60	20	2-	2-	9.4	39.0	34.7	1300	30-	17.0	22.1	GF	L 22

CODING LEGEND

- ANN PPT - ANNUAL PRECIPITATION (INCHES)
- MY-SPT PPT - MID-SEPT. RAINFALL (INCHES)
- NOV-MAR SNOWFL. - NOV. TO MARCH CUMULATIVE (INCHES)
- MAX SNOWPK - NORMAL MAXIMUM CUMULATIVE (INCHES)
- FSA - FREQUENCY OF SUMMER RAIN > 0.6" (DAYS)
- FNS - FREQUENCY OF WINTER SNOW > 6.0" (DAYS)
- HDD - HEATING DEGREE DAYS (< 45°F THRESHOLD)
- TDD - THAWING DEGREE DAYS > 32°F THRESHOLD
- FDD - FREEZING DEGREE DAYS < 32°F THRESHOLD
- GDD - GROWING DEGREE DAYS > 42°F THRESHOLD
- FFP - FROST FREE PERIODS (DAYS)
- PET - POTENTIAL EVAPOTRANSPIRATION (INCHES)
- E₀ - EVAPORATION FROM OPEN WATER (INCHES)
- CCA - CLIMATE CAPABILITY FOR AGRICULTURE
- APP - AIR POLLUTION POTENTIAL



Scale 1:125,000 Echelle

DOUBLE ENTRY INDICATES A RANGE WITHIN THE UNIT
 FIRST VALUE OF DOUBLE ENTRY REPRESENTS LOWER PORTION OF UNIT.
 ↑ IS READ AS GREATER THAN
 - IS READ AS LESS THAN
 IN GDD, FFP, CCA and APP values within double entries are listed in decreasing order of abundance.

CLIMATE DATA MAP - PROVISIONAL 93E/NE

JAN 14/74